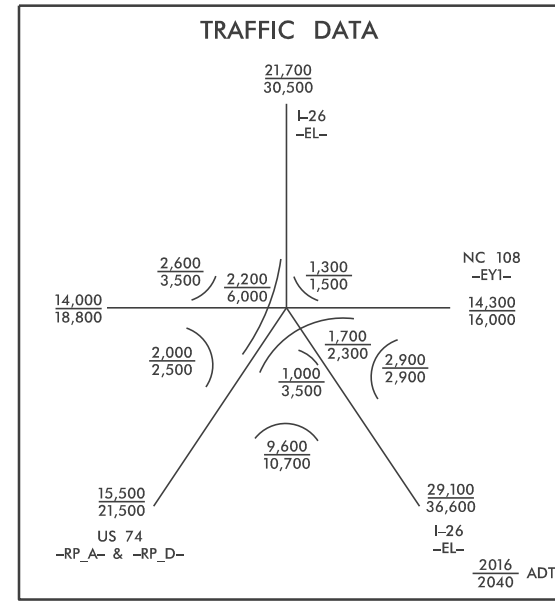
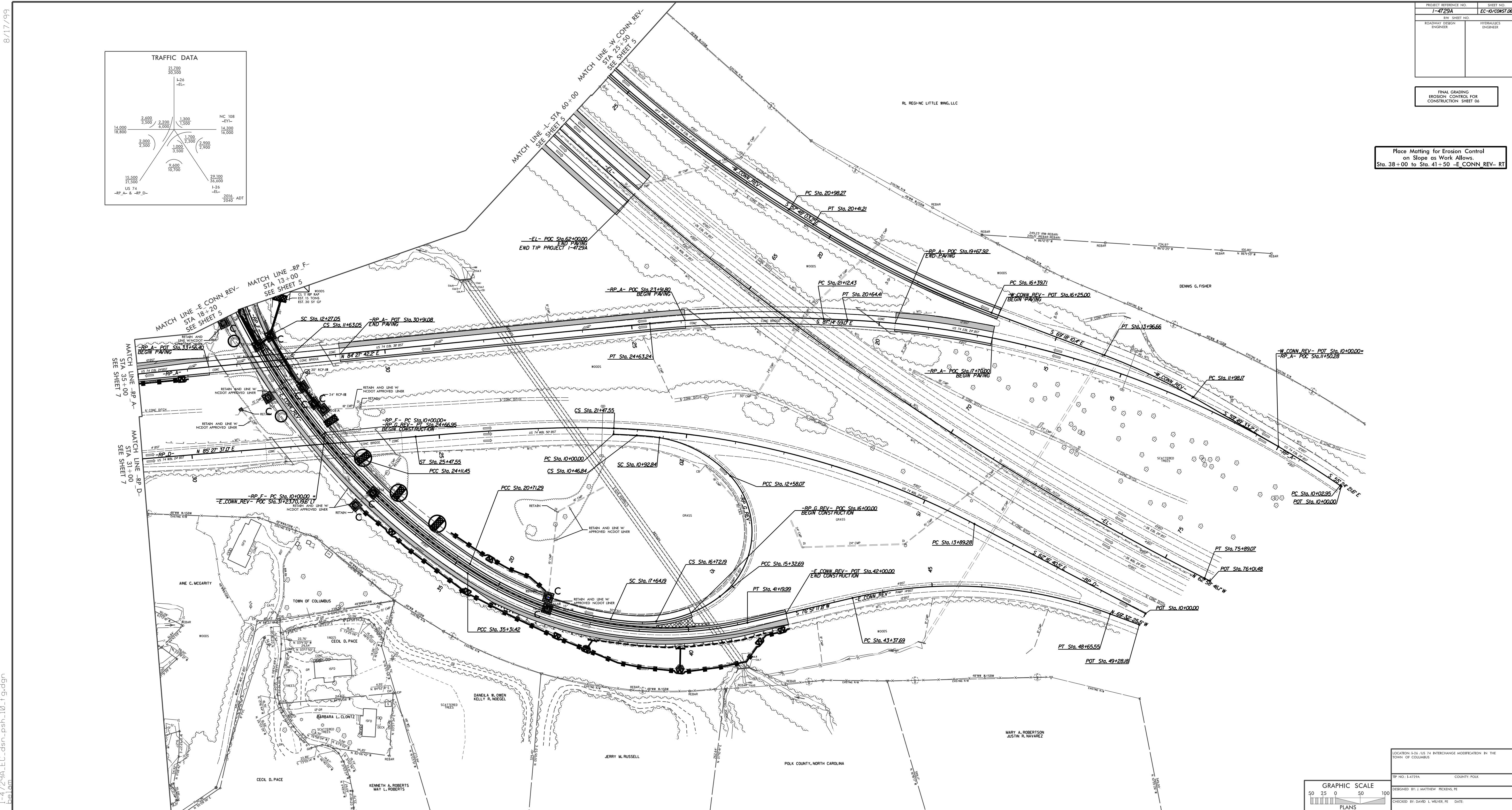


8/17/99



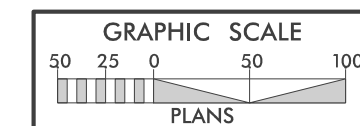
8/28/2017 9:41:10 EC-dsn-psh-10-fg.dgn



PROJECT REFERENCE NO.	SHEET NO.
I-47/29A	EC-10/CONST/26
REV. SHEET NO.	37,300
ROADWAY DESIGN ENGINEER	HYDRAULICS ENGINEER

FINAL GRADING
EROSION CONTROL FOR
CONSTRUCTION SHEET 26

Place Matting for Erosion Control
on Slope as Work Allows.
Sta. 38+00 to Sta. 41+50 -E-CONN REV- RT



LOCATION: I-47/29A INTERCHANGE MODIFICATION BY THE TOWN OF COLUMBUS	
TP NO. I-47/29A	COUNTY: FOLK
DESIGNED BY: J. MATTHEW PICKENS, PE	
CHECKED BY: DAVID L. WELVE, PE DATE	