

8/17/19

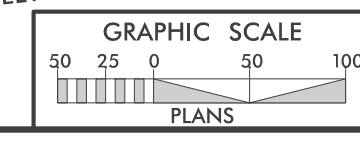
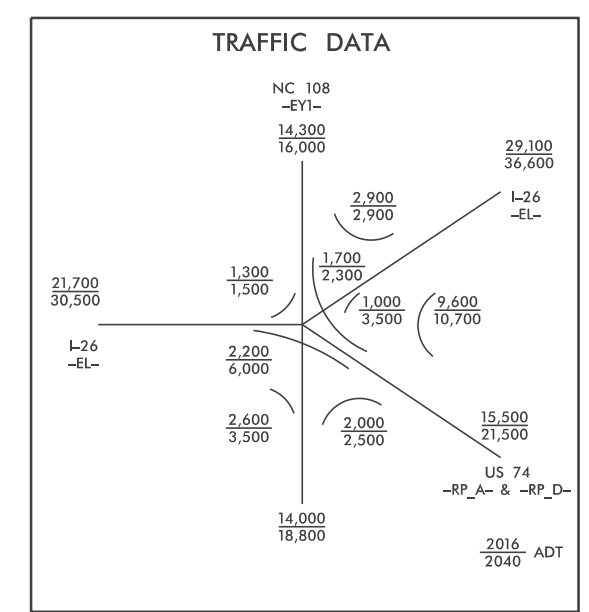
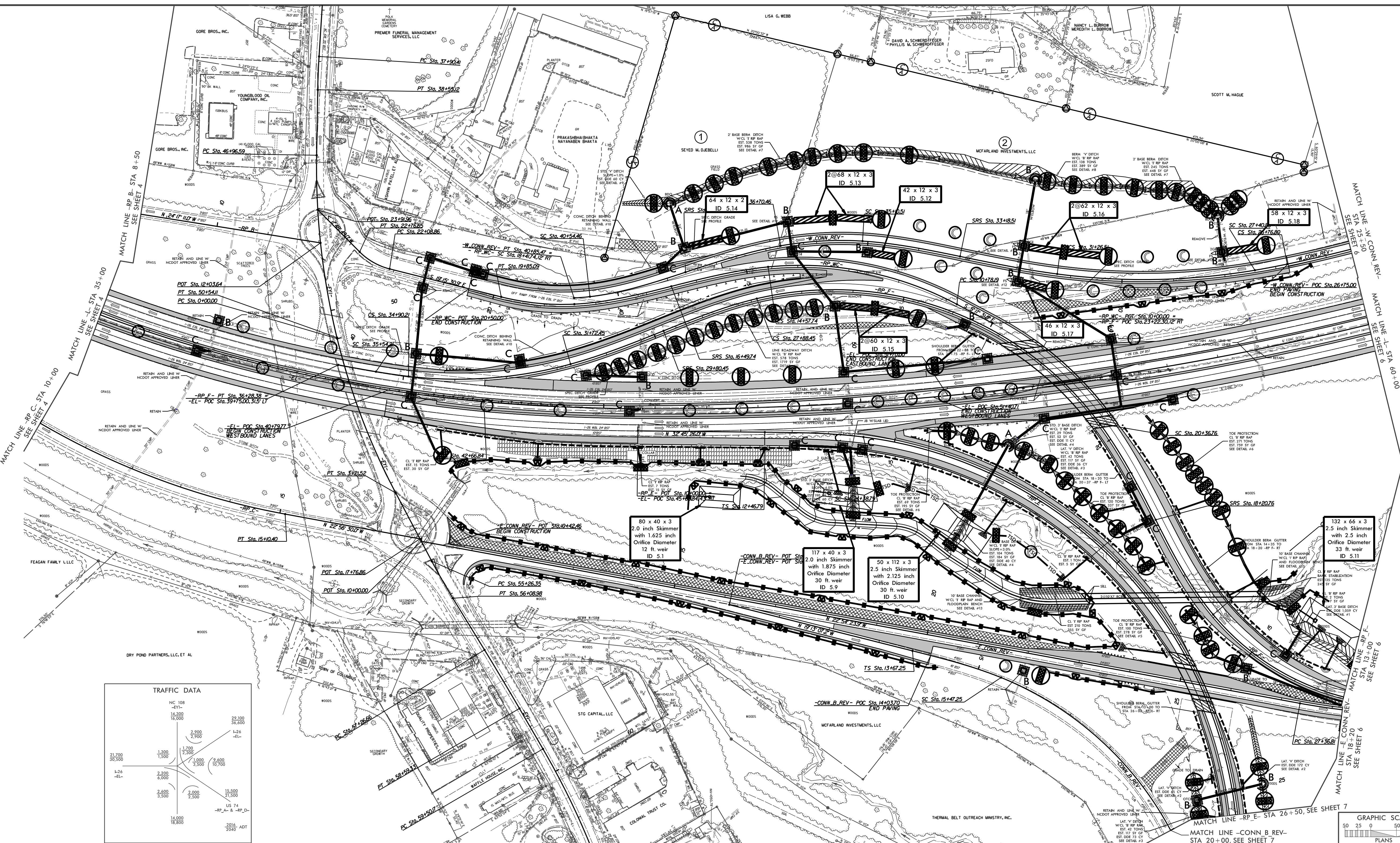
8/10/2017 9:41:54 AM EC.dsn_psh_09.f.gdn

PROJECT REFERENCE NO.	SHEET NO.
1-479A	EC-09/CONST.05
ROADWAY DESIGN ENGINEER	HYDRAULICS ENGINEER

FINAL GRADING EROSION CONTROL FOR CONSTRUCTION SHEET 05

Place Matting for Erosion Control on Slope as Work Allows.

Sta. 13+00 to Sta. 22+00 -RP-E-RT
 Sta. 23+50 to Sta. 25+50 -RP-E-RT
 Sta. 16+00 to Sta. 20+00 -RP-E-LT
 Sta. 18+50 to Sta. 22+50 -RP-E-LT
 Sta. 23+50 to Sta. 25+50 -RP-E-LT
 Sta. 29+50 to Sta. 32+00 -RP-F-RT
 Sta. 24+50 to Sta. 30+50 -RP-F-LT
 Sta. 13+50 to Sta. 20+00 -RP-F-RT
 Sta. 23+00 to Sta. 23+50 -RP-F-LT
 Sta. 33+00 to Sta. 35+50 -RP-F-LT
 Sta. 26+75 to Sta. 39+00 -W CONN REV- RT



LOCATION: I-74 INTERCHANGE HOVORATION BY THE TOWN OF COLUMBUS

TP NO. 1-479A COUNTY: POLK

DESIGNED BY: J. MATTHEW PICKENS, PE

CHECKED BY: DAVID L. WELVE, PE DATE: