

5/28/19

BM #25 ELEVATION = 1034.52'  
N = 561306.53 E = 1042923.55  
-CONN\_B\_REV- STATION 17+68.78  
70.46' RIGHT  
RR SPIKE IN BASE 20" POPLAR

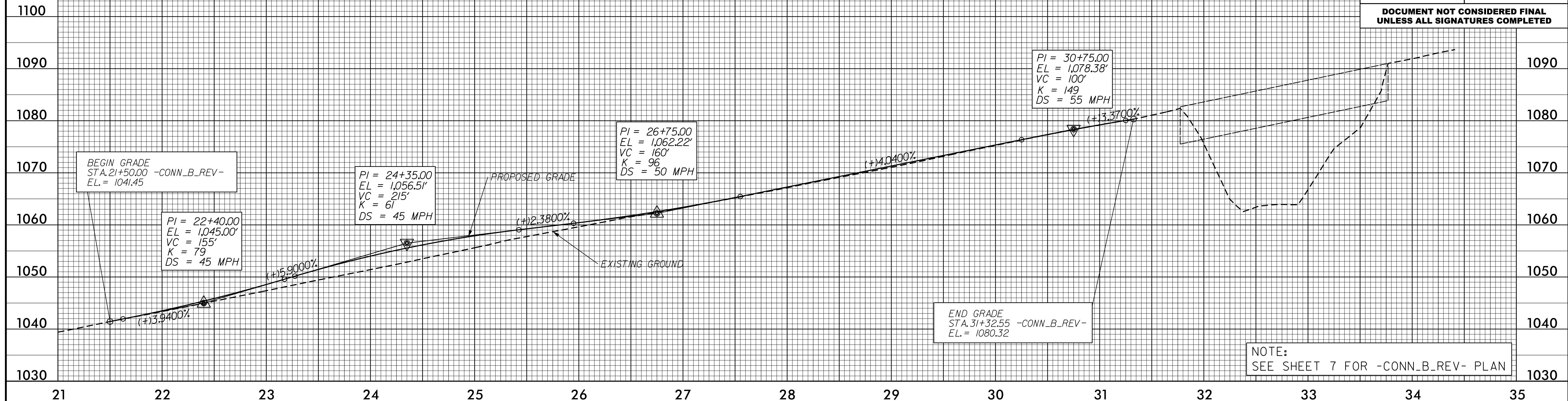
PLANS PREPARED BY :

**PARSONS**  
RALEIGH, NORTH CAROLINA, (919) 854-1345  
NC LICENSE NO. F-0246  
FOR NORTH CAROLINA DEPT. OF TRANSPORTATION

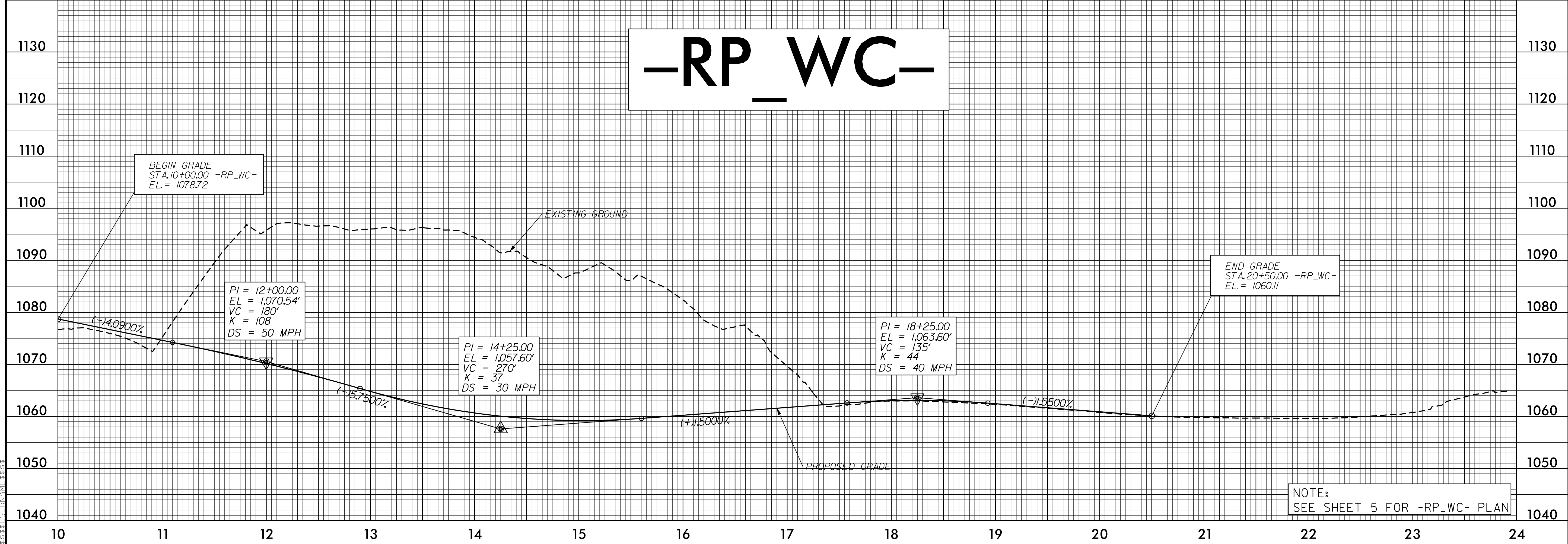
SUNGATE DESIGN GROUP, P.A.  
915 JONES FRANKLIN ROAD  
RALEIGH, NORTH CAROLINA 27606  
TEL (919) 854-2243 FAX (919) 854-0258  
ENG. REG. LICENSE NO. C490

PROJECT REFERENCE NO. I-4729A	SHEET NO. 10
ROADWAY DESIGN ENGINEER [Signature]	HYDRAULICS ENGINEER [Signature]
SEAL 37950 8/14/2017	SEAL 026971 8/14/2017

# -CONN\_B\_REV-



# -RP\_WC-



I:\AUG\_2017\_0845\wau\proj\I-4729A\_RDY\_PFL\_10.dgn