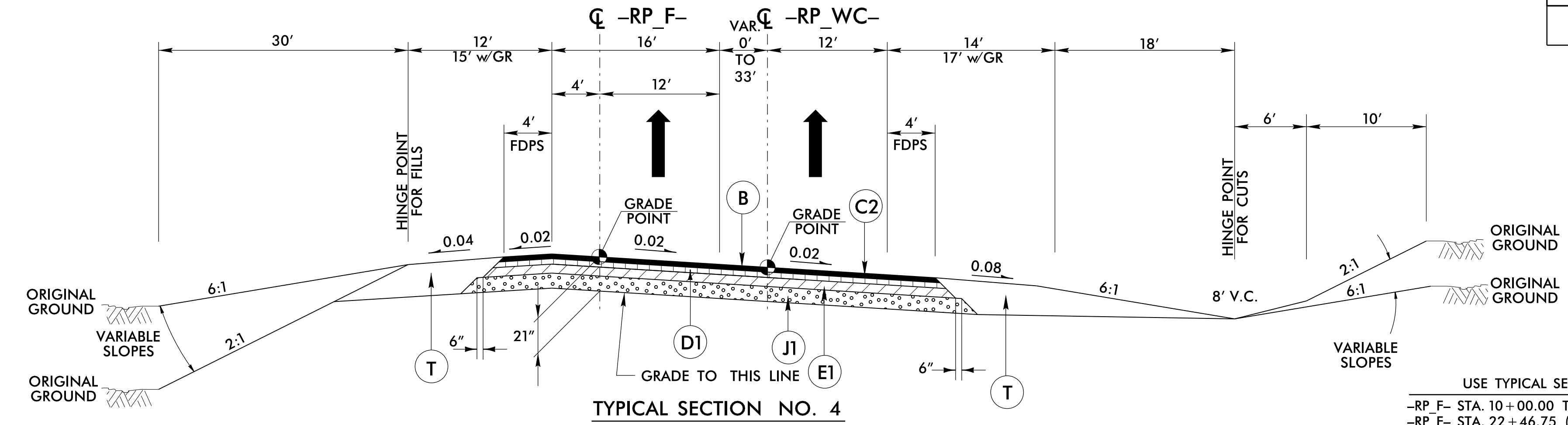
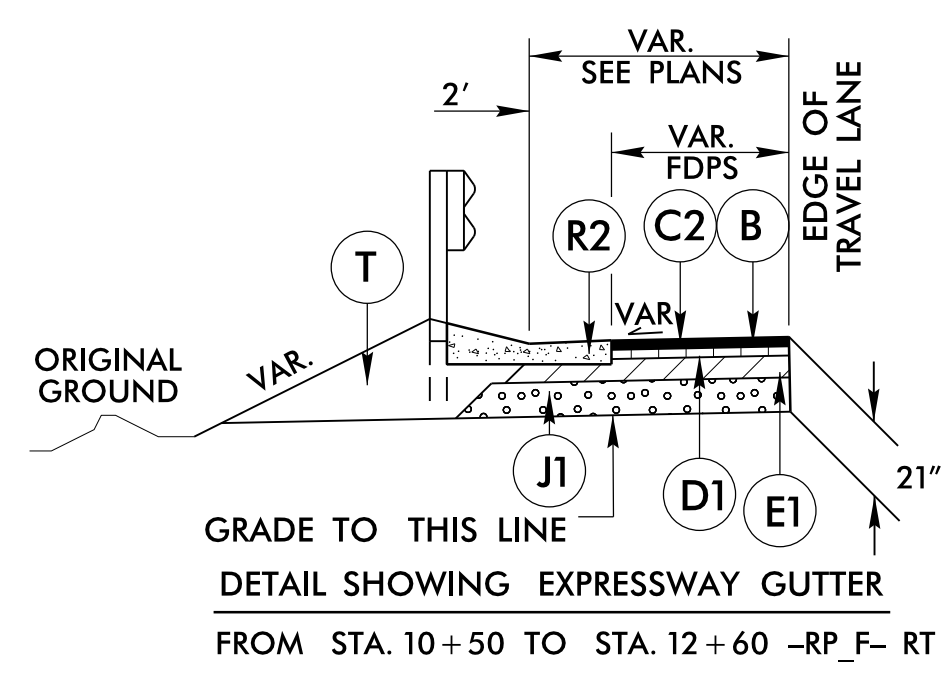


PAVEMENT SCHEDULE	
B	OGFC TYPE FC-1 MOD
C2	3" A.C.S.C. TYPE S9.5C
D1	3" A.C.I.C. TYPE I19.0C
E1	4" A.C.B.C. TYPE B25.0C
J1	11" DEPTH A.B.C.
R2	EXPRESSWAY GUTTER
T	EARTH MATERIAL

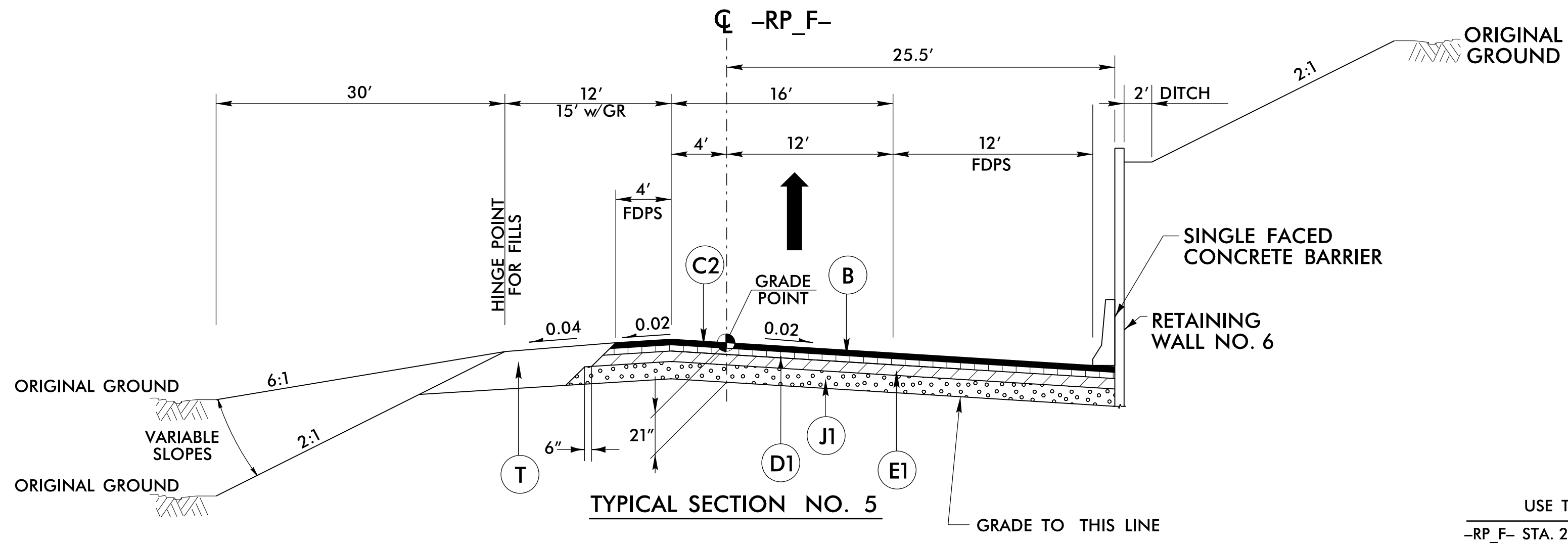
PLANS PREPARED BY:
PARSONS
RALEIGH, NORTH CAROLINA, (919) 854-1345
 NC LICENSE NO. F-0246
 FOR NORTH CAROLINA DEPT. OF TRANSPORTATION

PROJECT REFERENCE NO. 1-4729A	SHEET NO. 2A-2
ROADWAY DESIGN ENGINEER <i>[Signature]</i> 8/14/2017	PAVEMENT DESIGN ENGINEER <i>[Signature]</i> 8/14/2017

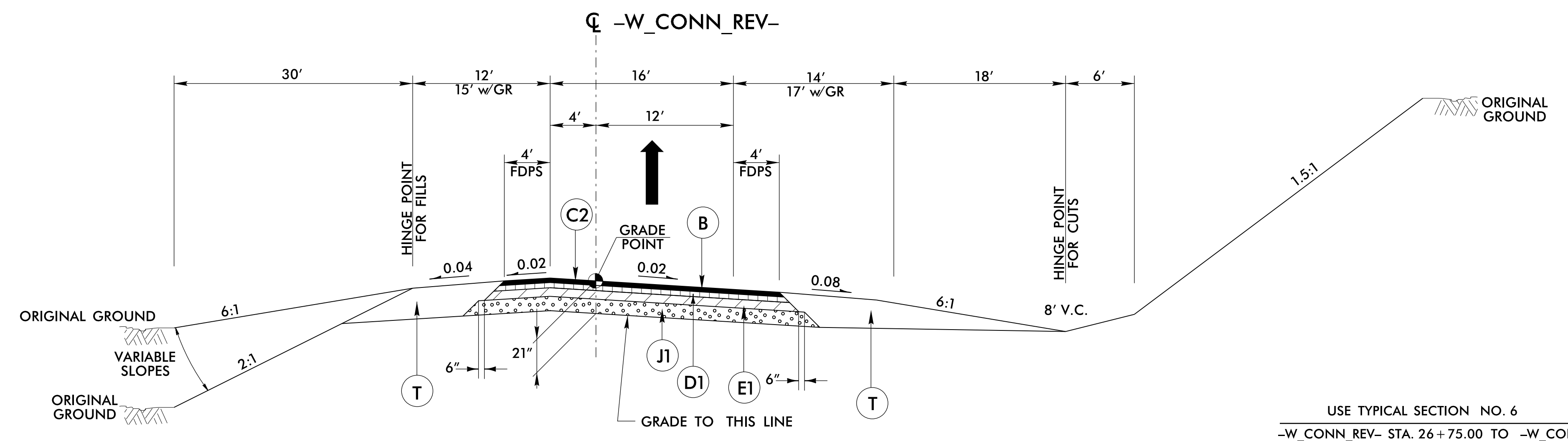
**DOCUMENT NOT CONSIDERED FINAL
UNLESS ALL SIGNATURES COMPLETED**



USE TYPICAL SECTION NO. 4
 -RP_F- STA. 10+00.00 TO -RP_F- STA. 20+52.09 (BEGIN BRIDGE)
 -RP_F- STA. 22+46.75 (END BRIDGE) TO -RP_F- STA. 26+51.54
 -RP_WC- STA. 10+00.00 TO -RP_WC- STA. 13+42.97



USE TYPICAL SECTION NO. 5
 -RP_F- STA. 27+00.00 TO -RP_F- STA. 32+71.00



USE TYPICAL SECTION NO. 6
 -W_CONN_REV- STA. 26+75.00 TO -W_CONN_REV- STA. 36+97.21

NOTE: SEE PLANS FOR GUARDRAIL LOCATIONS

14-AUG-2017 08:13
 I:\14729A\RDY\PROJ\1-4729A_RDY_TYP_2A-2.dgn
 USER:NAME