

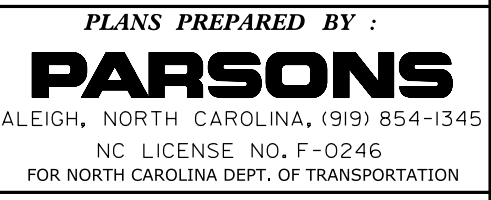
8/17/99

FINAL PAVEMENT SCHEDULE

B	PROP. OPEN-GRADED ASPHALT FRICTION COURSE, TYPE FC-1 MOD, AT AN AVERAGE RATES OF 70 LBS. PER SQ. YD.	J1	PROP. 11" AGGREGATE BASE COURSE	V	MILLED RUMBLE STRIPS
C1	PROP. APPROX. 1 1/2" ASPHALT CONCRETE SURFACE COURSE, TYPE S9.5C, AT AN AVERAGE RATE OF 168 LBS. PER SQ. YD.	R1	SHOULDER BERM GUTTER.	V1	MILLING ASPHALT PAVEMENT, 2 1/4" DEPTH
C2	PROP. APPROX. 3" ASPHALT CONCRETE SURFACE COURSE, TYPE S9.5C, AT AN AVERAGE RATE OF 168 LBS. PER SQ. YD. IN EACH OF TWO LAYERS.	R2	EXPRESSWAY GUTTER.	V2	MILLING ASPHALT PAVEMENT, 3" DEPTH
C3	PROP. VAR. DEPTH ASPHALT CONCRETE SURFACE COURSE, TYPE S9.5C, AT AN AVERAGE RATE OF 112 LBS. PER SQ. YD. PER 1" DEPTH. TO BE PLACED IN LAYERS NOT TO EXCEED 2" IN DEPTH.	R3	2'-6" CURB & GUTTER	U	EXISTING PAVEMENT.
C4	PROP. APPROX. 1 1/2" ASPHALT CONCRETE SURFACE COURSE, TYPE S9.5B, AT AN AVERAGE RATE OF 168 LBS. PER SQ. YD.	T	EARTH MATERIAL.	W	VARIABLE DEPTH ASPHALT PAVEMENT (SEE DETAIL SHOWING METHOD OF WEDGING)

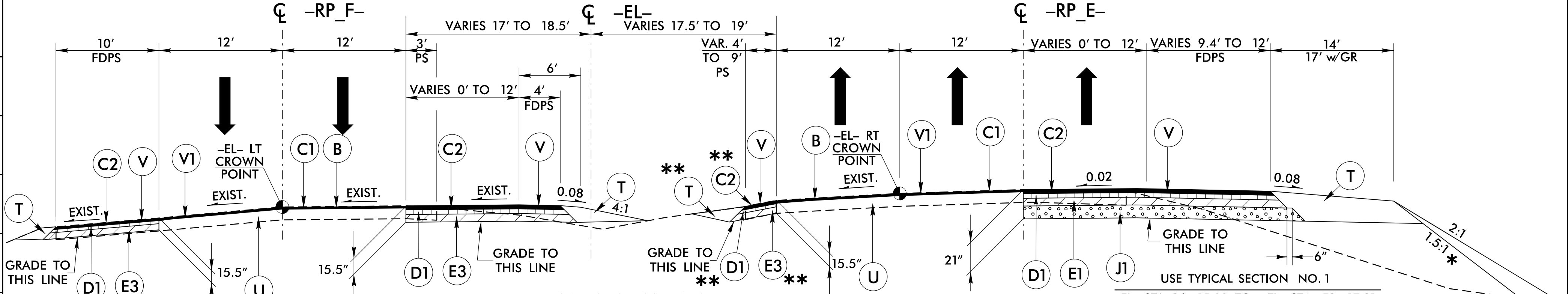
PROJECT REFERENCE NO. 1-4729A	SHEET NO. 2A-1
ROADWAY DESIGN ENGINEER NORTH CAROLINA PROFESSIONAL SEAL 37950 8/16/2017	PAVEMENT DESIGN ENGINEER NORTH CAROLINA PROFESSIONAL SEAL 031022 8/16/2017

DOCUMENT NOT CONSIDERED FINAL UNLESS ALL SIGNATURES COMPLETED



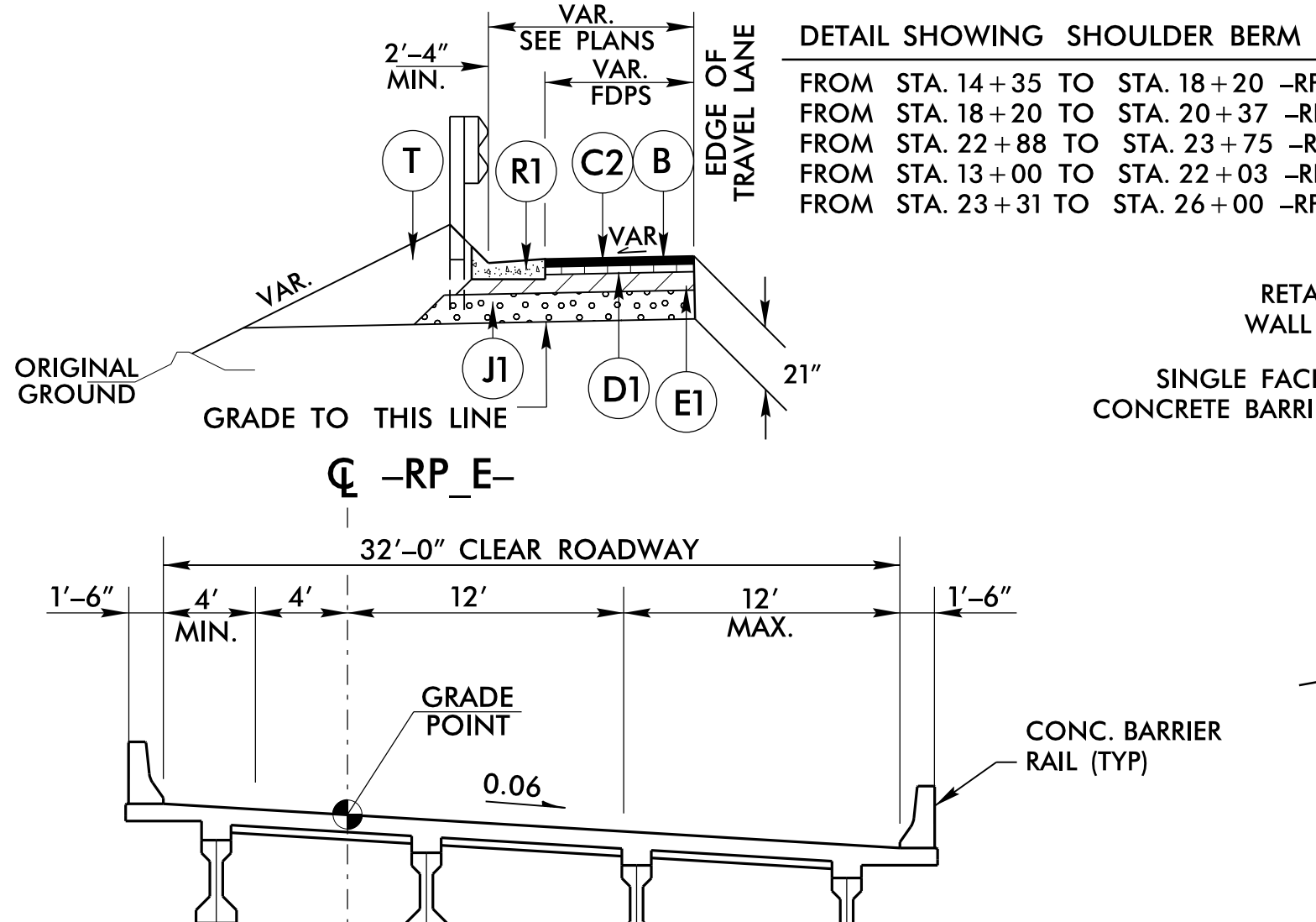
NOTE: PAVEMENT EDGE SLOPES ARE 1:1 UNLESS SHOWN OTHERWISE.

D1	PROP. APPROX. 3" ASPHALT CONCRETE INTERMEDIATE COURSE, TYPE I19.0C, AT AN AVERAGE RATE OF 342 LBS. PER SQ. YD.
D2	PROP. VAR. DEPTH ASPHALT CONCRETE INTERMEDIATE COURSE, TYPE I19.0C, AT AN AVERAGE RATE OF 114 LBS. PER SQ. YD. PER 1" DEPTH, TO BE PLACED IN LAYERS NOT LESS THAN 2 1/2" IN DEPTH OR GREATER THAN 4" IN DEPTH.
D3	PROP. APPROX. 3" ASPHALT CONCRETE INTERMEDIATE COURSE, TYPE I19.0B, AT AN AVERAGE RATE OF 342 LBS. PER SQ. YD.
E1	PROP. APPROX. 4" ASPHALT CONCRETE BASE COURSE, TYPE B25.0C, AT AN AVERAGE RATE OF 456 LBS. PER SQ. YD.
E2	PROP. VAR. DEPTH ASPHALT CONCRETE BASE COURSE, TYPE B25.0C, AT AN AVERAGE RATE OF 114 LBS. PER SQ. YD. PER 1" DEPTH. TO BE PLACED IN LAYERS NOT LESS THAN 3" IN DEPTH OR GREATER THAN 5 1/2" IN DEPTH.
E3	PROP. APPROX. 9 1/2" ASPHALT CONCRETE BASE COURSE, TYPE B25.0C, TO BE PLACED IN TWO LAYERS: -FIRST LAYER 5 1/2" AT AN AVERAGE RATE OF 627 LBS. PER SQ. YD. -SECOND LAYER 4" AT AN AVERAGE RATE OF 456 LBS. PER SQ. YD.



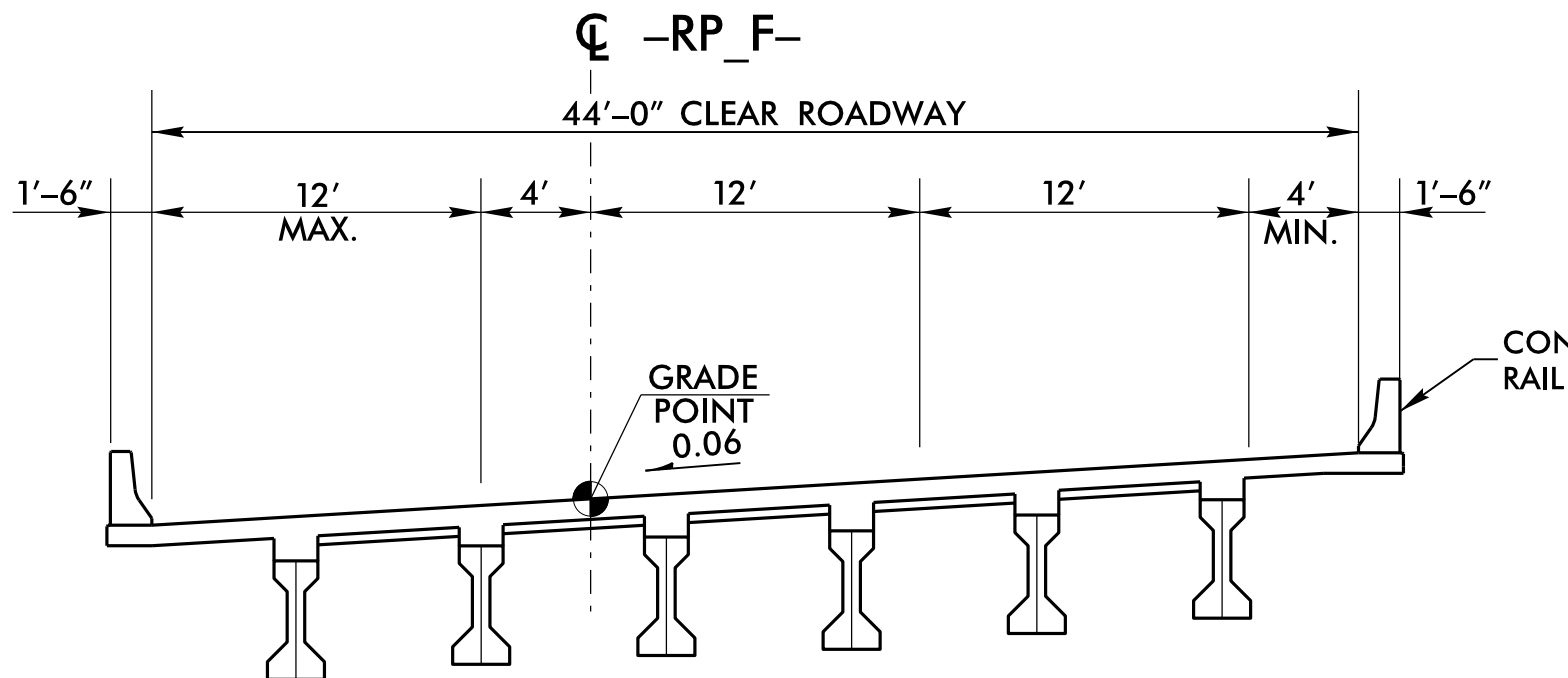
TYPICAL SECTION NO. 1

USE TYPICAL SECTION NO. 1
 -EL- STA. 26+15.00 TO -EL- STA. 52+17.81
 -EL- STA. 55+24.25 TO -EL- STA. 62+00.00
 -RP F- STA. 32+71.00 TO -RP F- STA. 36+28.38
 -RP E- STA. 10+00.00 TO -RP E- STA. 15+00.00
 * -EL- STA. 43+00.00 TO STA. 48+64.63
 ** -EL- STA. 33+07.09 TO STA. 53+02.71 (RT MEDIAN 9' SHOULDER REPLACE)



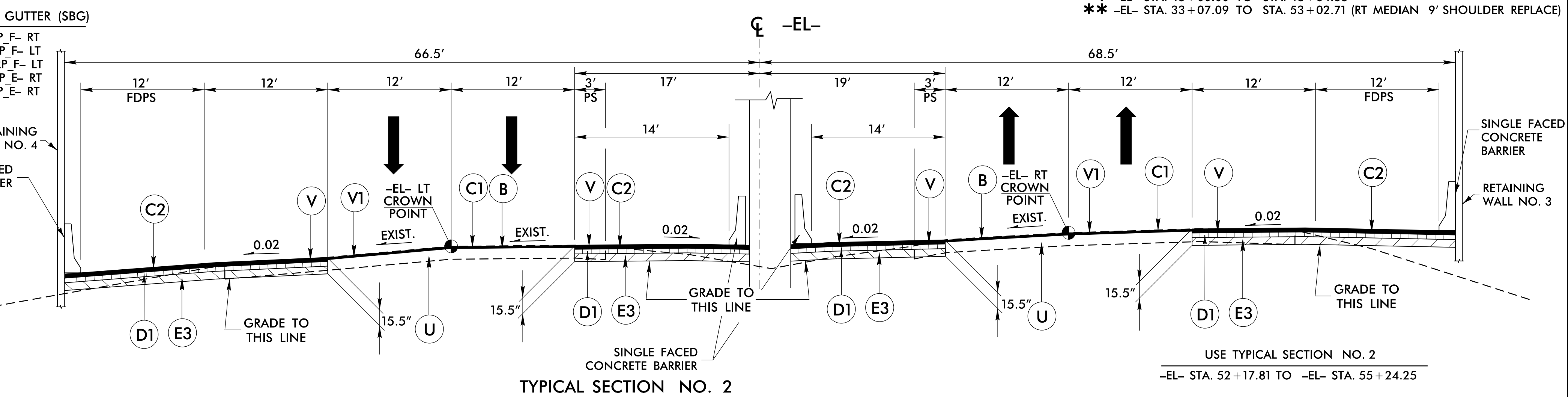
TYPICAL SECTION 2 ON STRUCTURE

-RP_E- STA. 22+45.30 TO -RP_E- STA. 23+21.76



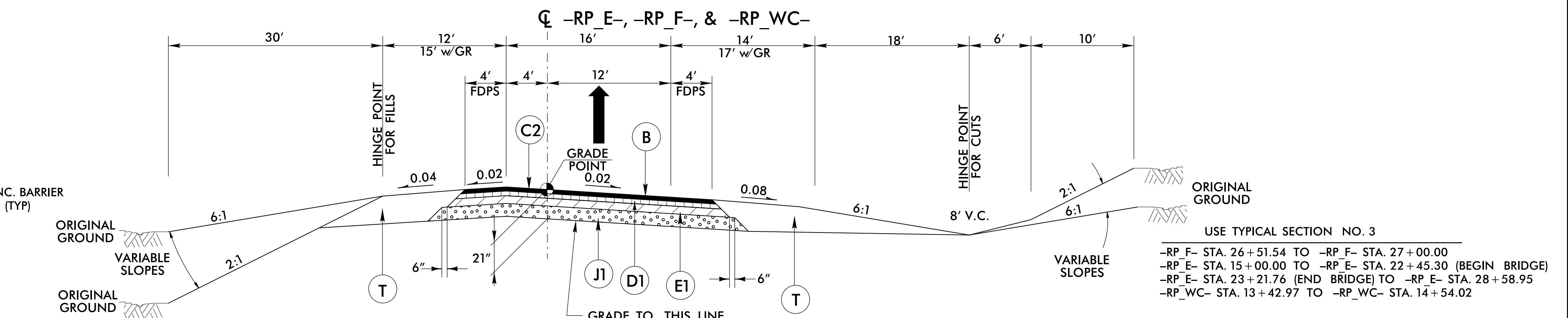
TYPICAL SECTION 3 ON STRUCTURE

-RP_F- STA. 20+52.09 TO -RP_F- STA. 22+46.75



TYPICAL SECTION NO. 2

USE TYPICAL SECTION NO. 2
-EL- STA. 52+17.81 TO -EL- STA. 55+24.25



TYPICAL SECTION NO. 3

NOTE: SEE PLANS FOR GUARDRAIL LOCATIONS

USE TYPICAL SECTION NO. 3
 -RP_F- STA. 26+51.54 TO -RP_F- STA. 27+00.00
 -RP_E- STA. 15+00.00 TO -RP_E- STA. 22+45.30 (BEGIN BRIDGE)
 -RP_E- STA. 23+21.76 (END BRIDGE) TO -RP_E- STA. 28+58.95
 -RP_WC- STA. 13+42.97 TO -RP_WC- STA. 14+54.02

15-AUG-2017 14:06 I:\1729A\1729A\Drawings\1729A\1729A-TYP_2A-1.dgn