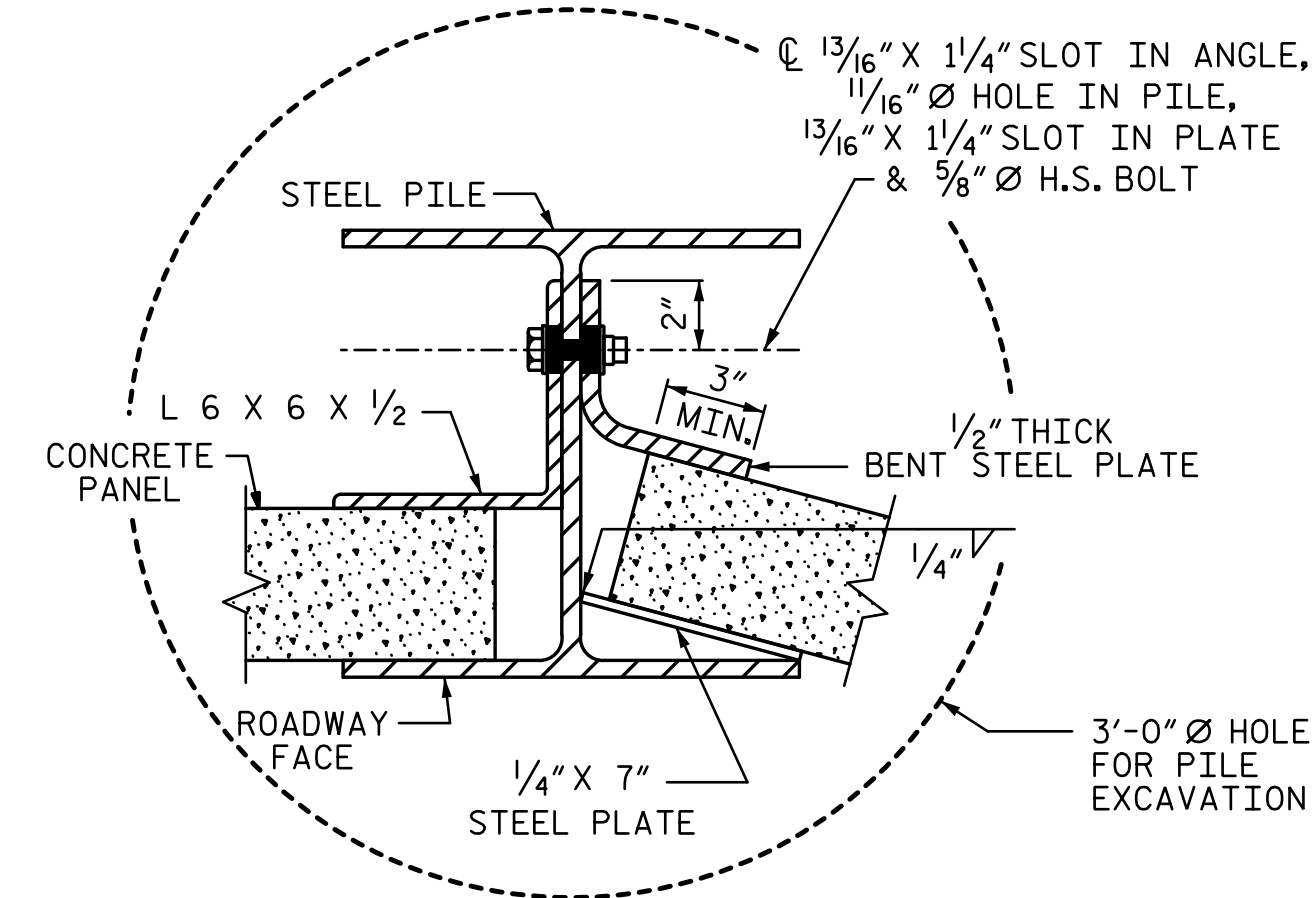


TYPICAL WALL TURN DETAIL

(FOR GREATER THAN 15° TURNS, CONVEX TOWARD ROADWAY)



TYPICAL WALL TURN DETAIL

(USE ONLY FOR TURNS 15° OR LESS, CONCAVE TOWARD ROADWAY)

NOTES:

USE STEEL PILES, SUPPORT BEAMS, ANGLES, AND LAGGING STOPS MEETING THE REQUIREMENTS OF AASHTO M270, GRADE 50, GALVANIZE ALL STEEL COMPONENTS INCLUDING PILES, SUPPORT BEAMS, ANGLES, LAGGING STOPS, BOLTS, NUTS, AND WASHERS IN ACCORDANCE WITH SECTION 1076 OF THE STANDARD SPECIFICATIONS. REPAIR ANY DAMAGED GALVANIZATION IN ACCORDANCE WITH ARTICLE 1076-7 OF THE STANDARD SPECIFICATIONS.

AT THE CONTRACTOR'S OPTION, USE AN APPROVED NON-SHRINK NON-METALLIC GROUT BETWEEN THE FLANGES OF THE STEEL PILES TO SUPPORT THE BOTTOM PANEL IN LIEU OF LAGGING STOPS.

PROVIDE PLATES AND ANGLES TO SECURE PANELS 6" LONG AS MEASURED ALONG THE STEEL PILE.

DO NOT SPLICE STEEL PILES.

FOR SOUND BARRIER WALL, SEE SPECIAL PROVISIONS.

CONSTRUCT SOUND BARRIER WALL TO LINES AND GRADES SHOWN ON THE ROADWAY PLANS.

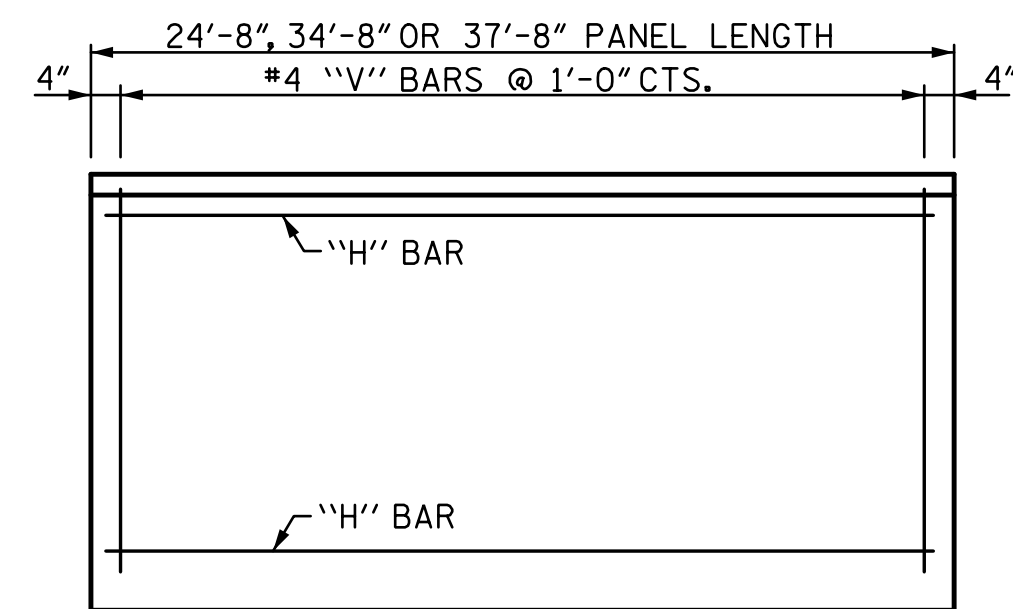
PROVIDE PANELS WITH FLAT BOTTOM.

VERIFY THE LOCATION OF UNDERGROUND UTILITIES BEFORE DRILLING HOLES TO ENSURE SUFFICIENT CLEARANCE IS AVAILABLE.

USE CLASS AA FOR PANELS, IN ACCORDANCE WITH ARTICLE 1000-4 OF THE STANDARD SPECIFICATIONS.

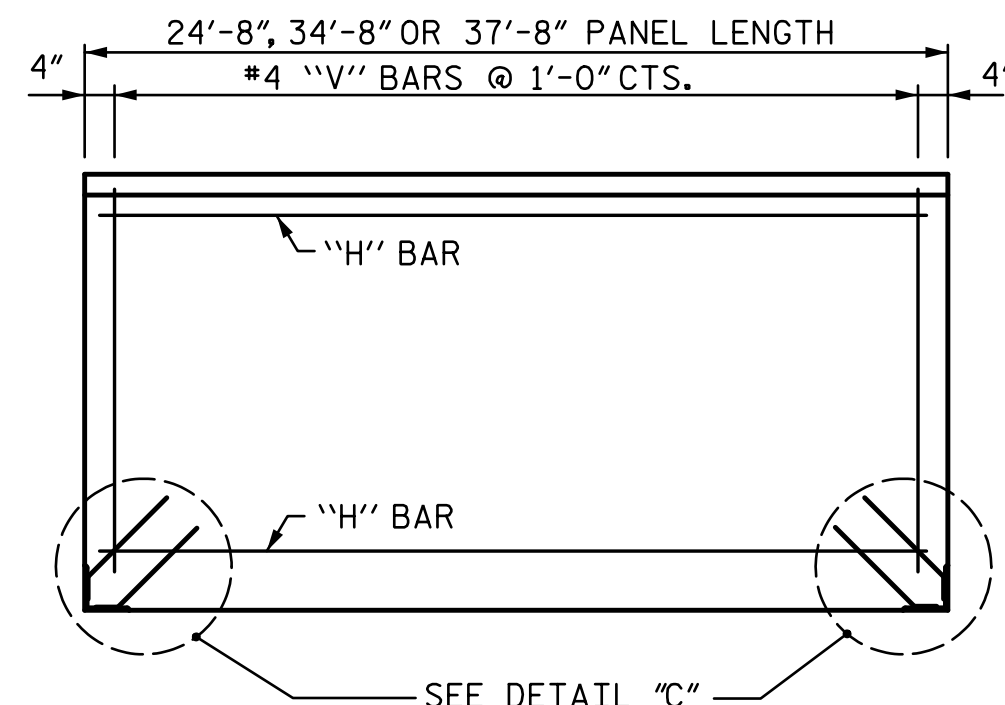
FOR SOUND BARRIER WALL STATIONS, OFFSETS AND WALL ENVELOPE, SEE ROADWAY PLANS.

STEEL PILES, SUPPORT BEAMS, ANGLES, LAGGING STOPS, ATTACHMENTS AND OTHER MISCELLANEOUS STEEL ARE INCIDENTAL, AND SHALL BE INCLUDED IN THE UNIT PRICE BID FOR "SOUND BARRIER WALL".



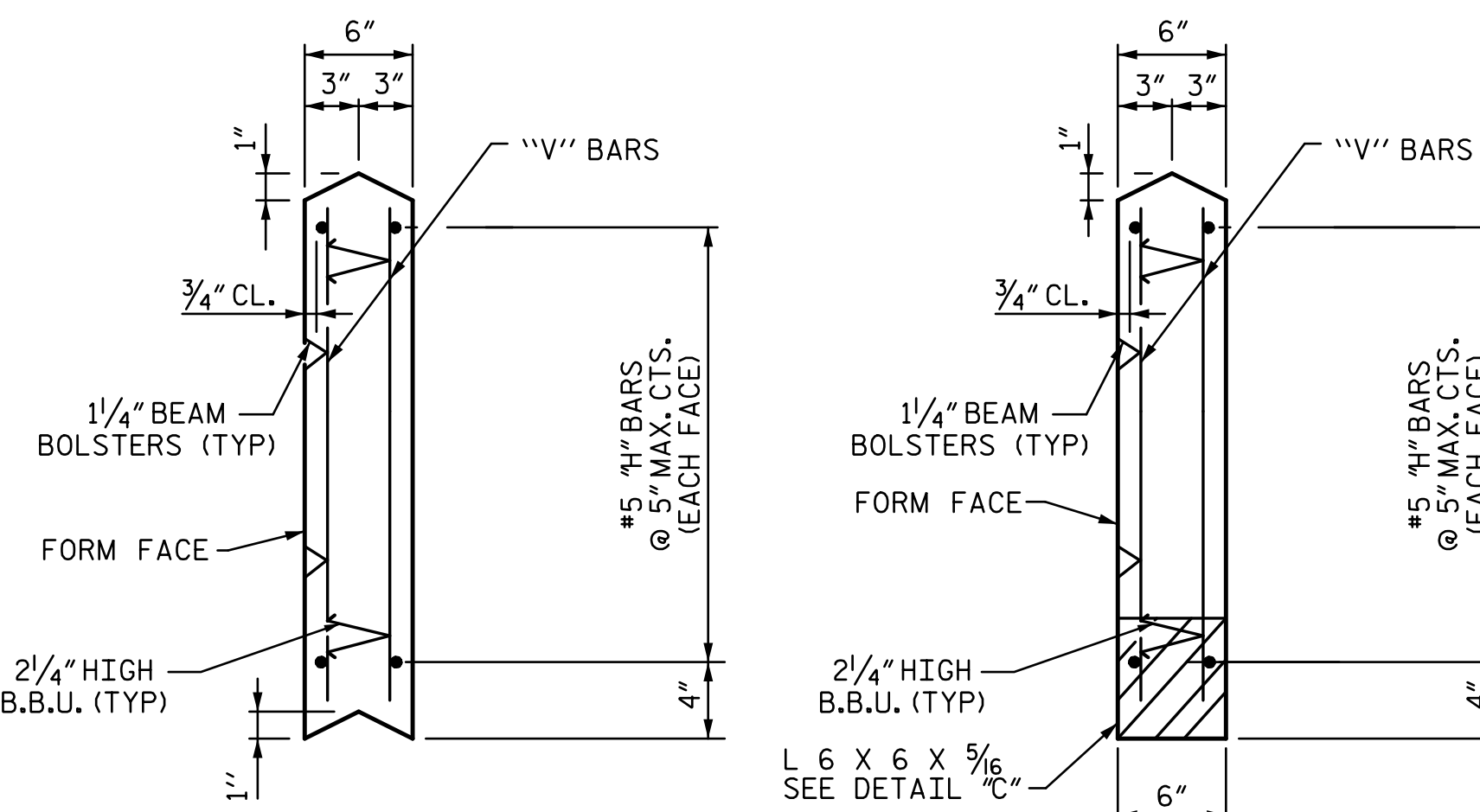
FRONT ELEVATION OF UPPER PRECAST PANELS

(FOR 24'-8\", 34'-8\"/>



FRONT ELEVATION OF BOTTOM PRECAST PANEL

(FOR 24'-8\", 34'-8\"/>

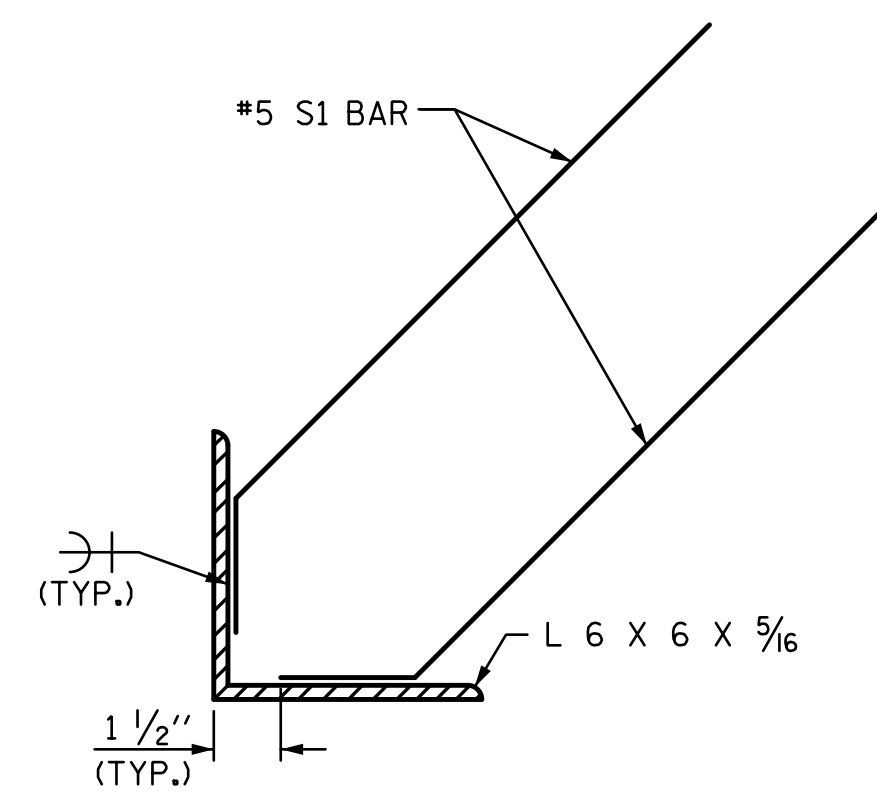


UPPER PANEL

BOTTOM PANEL

SECTION THROUGH PRECAST PANELS

(FOR 24'-8\", 34'-8\"/>



DETAIL "C"

QUANTITIES FOR ONE PRECAST PANEL (FOR 25'-0\"/>

PANEL HEIGHT	CLASS AA CONCRETE	BAR TYPES											
		HORIZONTAL						VERTICAL					
		C.Y.	NO.	BAR SIZE	TYPE	LENGTH	WEIGHT (lb)	NO.	BAR SIZE	TYPE	LENGTH	WEIGHT (lb)	
3'-0"	1.37	14	H1	#5	STR	24'-4"	355	50	V1	#4	STR	2'-8"	89
4'-0"	1.83	18	H2	#5	STR	24'-4"	457	50	V1	#4	STR	3'-8"	122

QUANTITIES FOR ONE PRECAST PANEL (FOR 35'-0\"/>

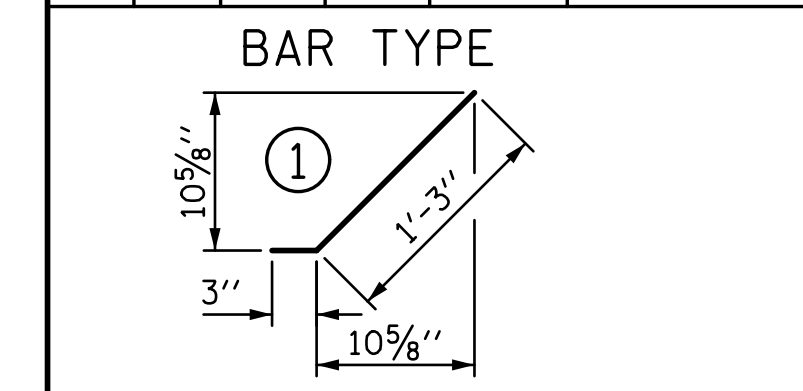
PANEL HEIGHT	CLASS AA CONCRETE	BAR TYPES											
		HORIZONTAL						VERTICAL					
		C.Y.	NO.	BAR SIZE	TYPE	LENGTH	WEIGHT (lb)	NO.	BAR SIZE	TYPE	LENGTH	WEIGHT (lb)	
3'-0"	1.93	14	H1	#5	STR	34'-4"	501	70	V1	#4	STR	2'-8"	125
4'-0"	2.57	18	H2	#5	STR	34'-4"	645	70	V1	#4	STR	3'-8"	171

QUANTITIES FOR ONE PRECAST PANEL (FOR 38'-0\"/>

PANEL HEIGHT	CLASS AA CONCRETE	BAR TYPES											
		HORIZONTAL						VERTICAL					
		C.Y.	NO.	BAR SIZE	TYPE	LENGTH	WEIGHT (lb)	NO.	BAR SIZE	TYPE	LENGTH	WEIGHT (lb)	
3'-0"	1.93	14	H1	#5	STR	37'-4"	545	76	V1	#4	STR	2'-8"	135
4'-0"	2.57	18	H2	#5	STR	37'-4"	701	76	V1	#4	STR	3'-8"	186

ADDITIONAL BARS FOR ONE BOTTOM PANEL

NO.	BAR SIZE	TYPE	LENGTH	WEIGHT (lb)	
4	S1	#5	1	1'-6"	6



PROJECT NO. U-4751

NEW HANOVER COUNTY

STATION: VARIES

SHEET 3 OF 3

DOCUMENT NOT CONSIDERED FINAL UNLESS ALL SIGNATURES COMPLETED

STATE OF NORTH CAROLINA
DEPARTMENT OF TRANSPORTATION
RALEIGH

SOUND BARRIER WALL DETAILS

REVISIONS						SHEET NO.
NO.	BY:	DATE:	NO.	BY:	DATE:	NW-17
1			3			TOTAL SHEETS
2			4			17

8/17/2017 3:04:45 PM R:\noisewalls\420_005_U4751_SML_NW_003_640000.dgn

DRAWN BY: MBC DATE: 5-17 DESIGN ENGINEER OF RECORD: J. DICHAK DATE: 5-17
 CHECKED BY: NML DATE: 5-17