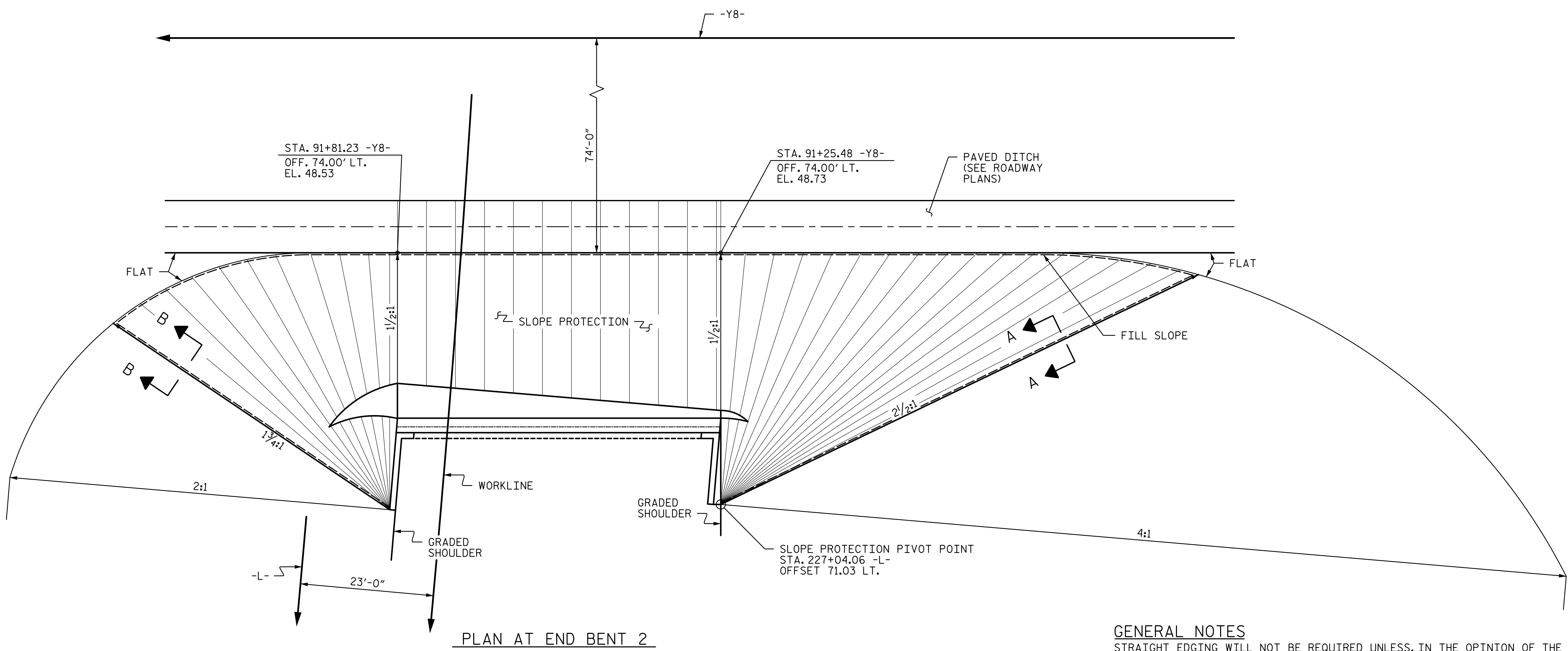


7/12/2017 2:15:05 PM \\USPADG\dfs02\vol3\Projects\4018617\4018617_000\50_Deliverables & Submittals\U-4751\Structures\Bridges_203\Station\Final\403_067_U4751_SMU_SP_034_640203.dgn



PLAN AT END BENT 2

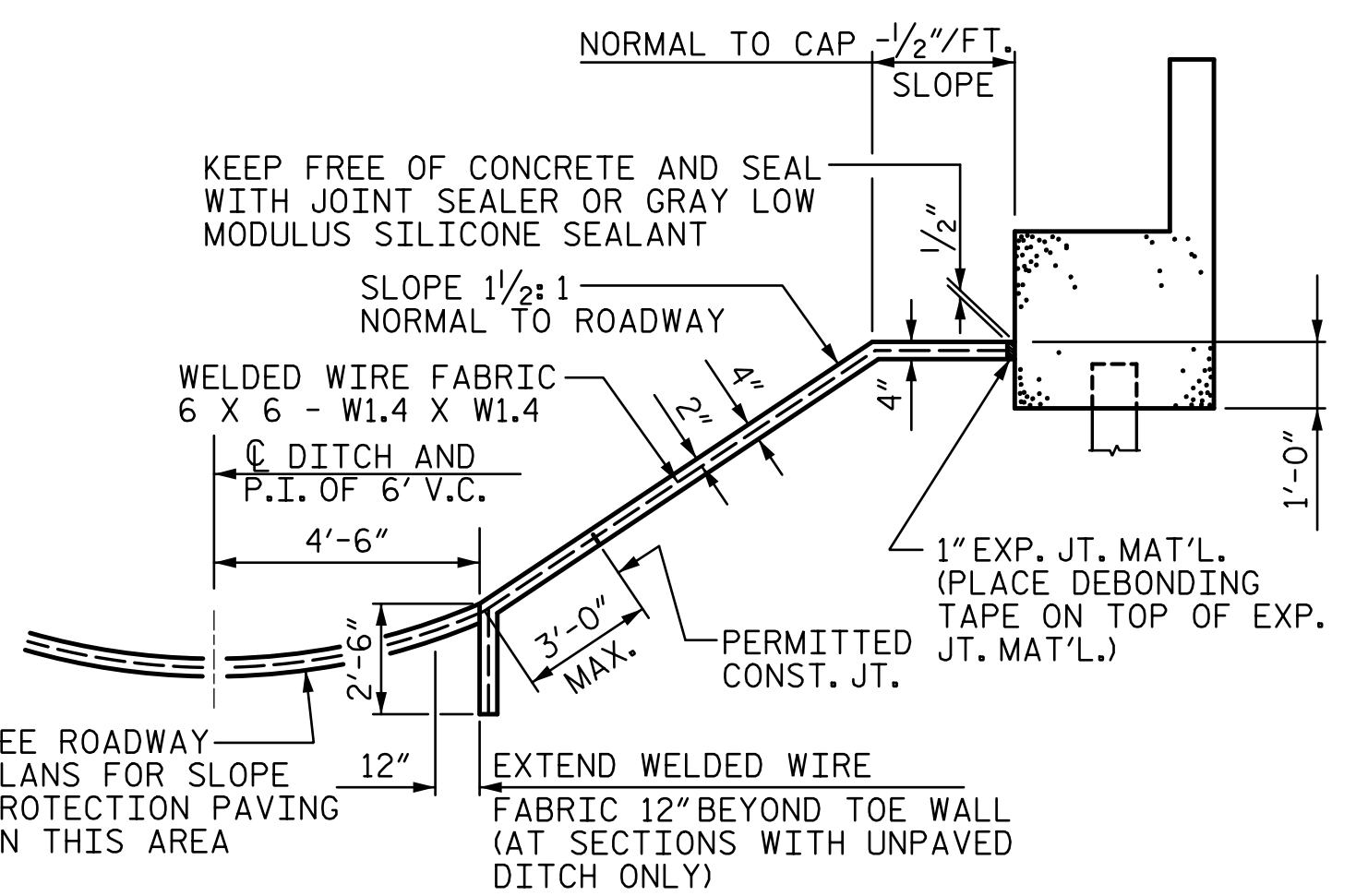
BRIDGE @ STA. 225+92.26 -L-	4 INCH SLOPE PROTECTION	WELDED WIRE FABRIC 60 INCHES WIDE
	SQUARE YARDS	APPROX. L.F.
END BENT 2	1,020	2,020

* QUANTITY SHOWN IS BASED ON 5' POURS.

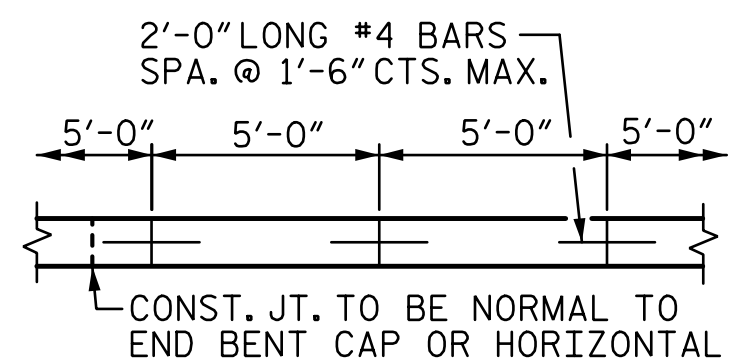
GENERAL NOTES

STRAIGHT EDGING WILL NOT BE REQUIRED UNLESS, IN THE OPINION OF THE ENGINEER, VISUAL INSPECTION INDICATES A NEED FOR IT. MEASUREMENT AND PAYMENT SHALL BE AS PRESCRIBED IN SECTION 462 OF THE STANDARD SPECIFICATIONS. FOR BERM WIDTH, SEE GENERAL DRAWING.

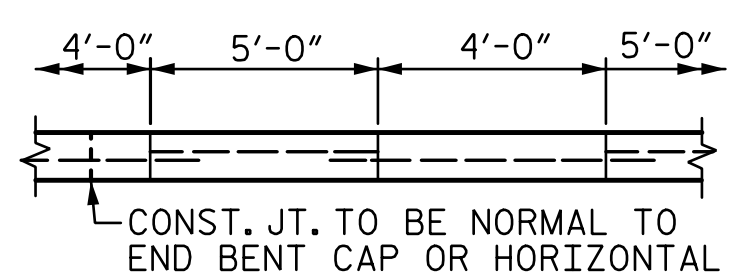
SLOPE PROTECTION SHALL CONSIST OF 4" POURED-IN-PLACE CONCRETE PAVING AS SHOWN IN THE DETAILS ON THIS SHEET. CONCRETE SHALL BE CLASS "B". THE CONCRETE SURFACE SHALL BE FLOATED WITH A WOODEN FLOAT AND FINISHED. WELDED WIRE FABRIC REINFORCING SHALL BE 6 X 6 - W1.4 X W1.4, 60" WIDE. SLOPE PROTECTION SHALL BE POURED IN 5' STRIPS AS SHOWN IN THE "POURING DETAIL" WITH 2'-0" LONG #4 BARS PLACED ALONG THE SLOPE BETWEEN STRIPS AT 1'-6" MAXIMUM SPACING. SLOPE PROTECTION MAY BE POURED IN ALTERNATE 4' AND 5' STRIPS AS SHOWN IN THE "OPTIONAL POURING DETAIL" WITH ADJACENT RUNS OF WELDED WIRE FABRIC LAPPING AT LEAST 6". THE COST OF THE WELDED WIRE FABRIC AND #4 BARS, IF USED, SHALL BE INCLUDED IN THE CONTRACT UNIT PRICE BID PER SQUARE YARD FOR SLOPE PROTECTION.



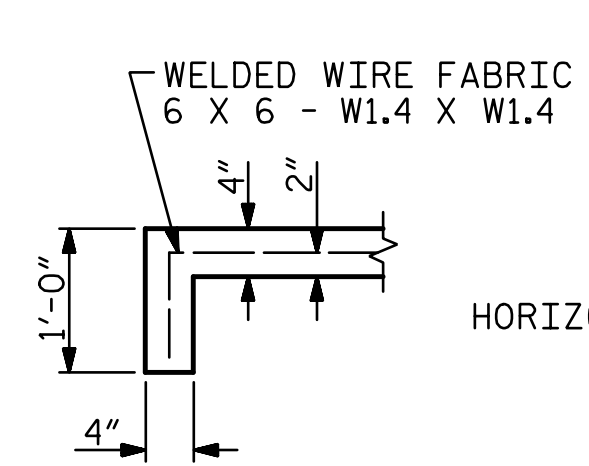
SECTION AT END BENT 2
ALONG C SURVEY -L-
SECTION WITH PAVED DITCH SHOWN,
SECTION WITH UNPAVED DITCH SIMILAR



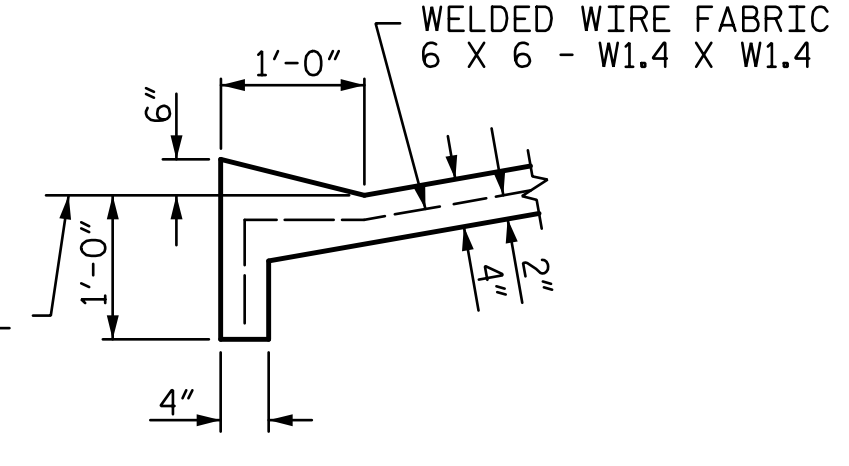
POURING DETAIL



OPTIONAL POURING DETAIL



SECTION A-A



SECTION B-B

PROJECT NO. U-4751
NEW HANOVER COUNTY
 STATION: 225+92.26 -L-
 SHEET 2 OF 2

DOCUMENT NOT CONSIDERED FINAL UNLESS ALL SIGNATURES COMPLETED			STATE OF NORTH CAROLINA DEPARTMENT OF TRANSPORTATION RALEIGH		SHEET NO. S3-34
	SLOPE PROTECTION				TOTAL SHEETS 36
	REVISIONS				
NO.	BY:	DATE:	NO.	BY:	DATE:
1			3		
2			4		

DRAWN BY : MBC DATE : 4-17
 CHECKED BY : TRL DATE : 5-17
 DESIGN ENGINEER OF RECORD: P. KELLY DATE : 10-16