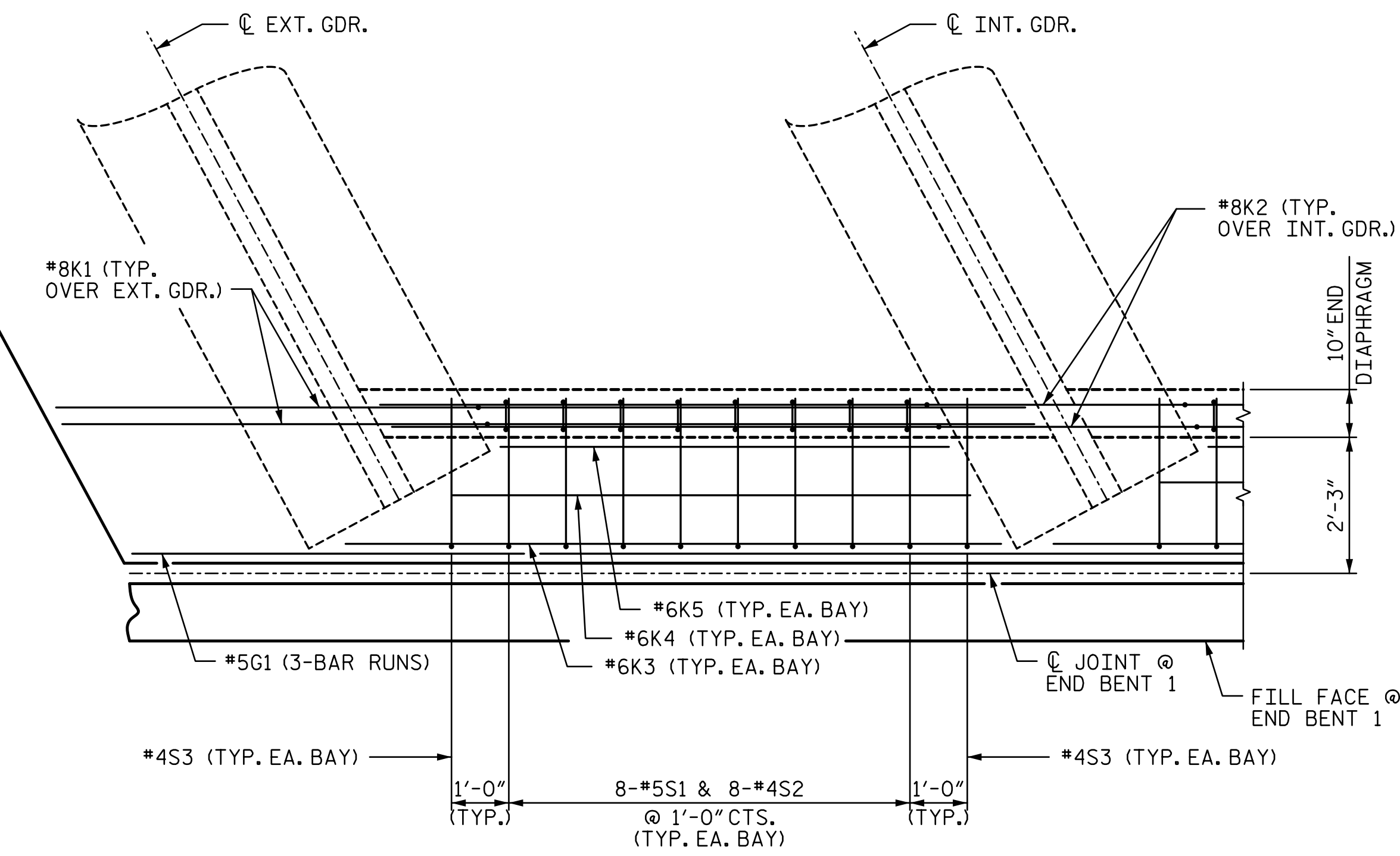
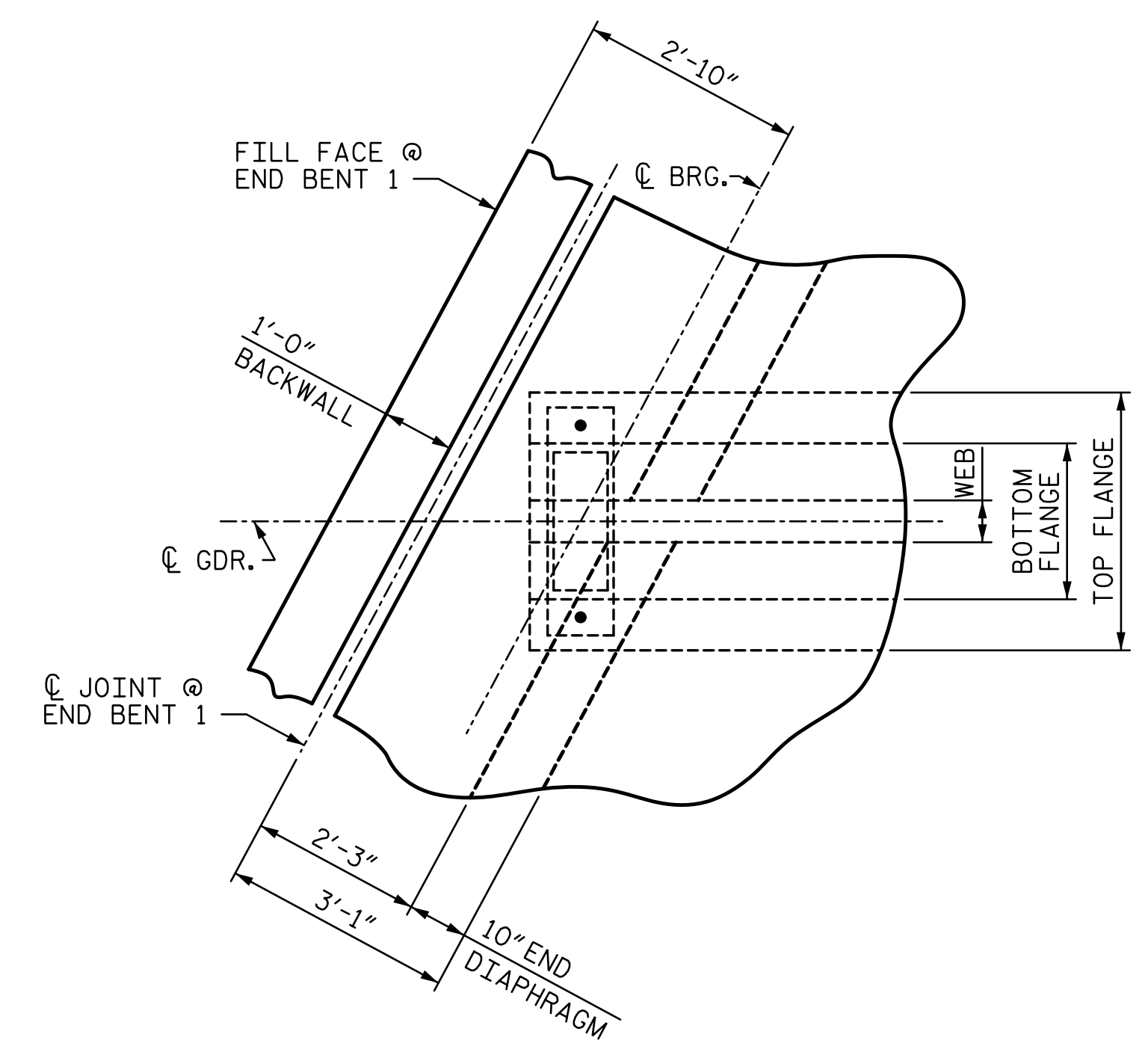


**SECTION THRU END DIAPHRAGM**  
 ("J" BAR USED WITH STANDARD EXP. JT. NOT SHOWN)

★ #5 "G" BAR MAY BE SHIFTED SLIGHTLY, AS NECESSARY, TO CLEAR REINFORCING STEEL AND STIRRUPS.



**END DIAPHRAGM DETAIL**  
 END BENT 1 SHOWN, END BENT 2 SIMILAR



**PLAN OF END DIAPHRAGM**

PROJECT NO. U-4751  
NEW HANOVER COUNTY  
 STATION: 62+99.10 -L-

R:\402\_013\_U4751\_SML\_TSOI\_007\_640202.dgn  
 6/27/2017 13:58:53  
 ttownsend

DOCUMENT NOT CONSIDERED FINAL UNLESS ALL SIGNATURES COMPLETED			STATE OF NORTH CAROLINA DEPARTMENT OF TRANSPORTATION RALEIGH SUPERSTRUCTURE SUPERSTRUCTURE DETAILS		SHEET NO. S2-7
	REVISIONS				TOTAL SHEETS 30
	NO.	BY:	DATE:	NO.	BY:
1			3		
2			4		

DRAWN BY: <u>TJT</u>	DATE: <u>3-17</u>	DESIGN ENGINEER OF RECORD: <u>T. TOWNSEND</u>	DATE: <u>3-17</u>
CHECKED BY: <u>AJP</u>	DATE: <u>4-17</u>		