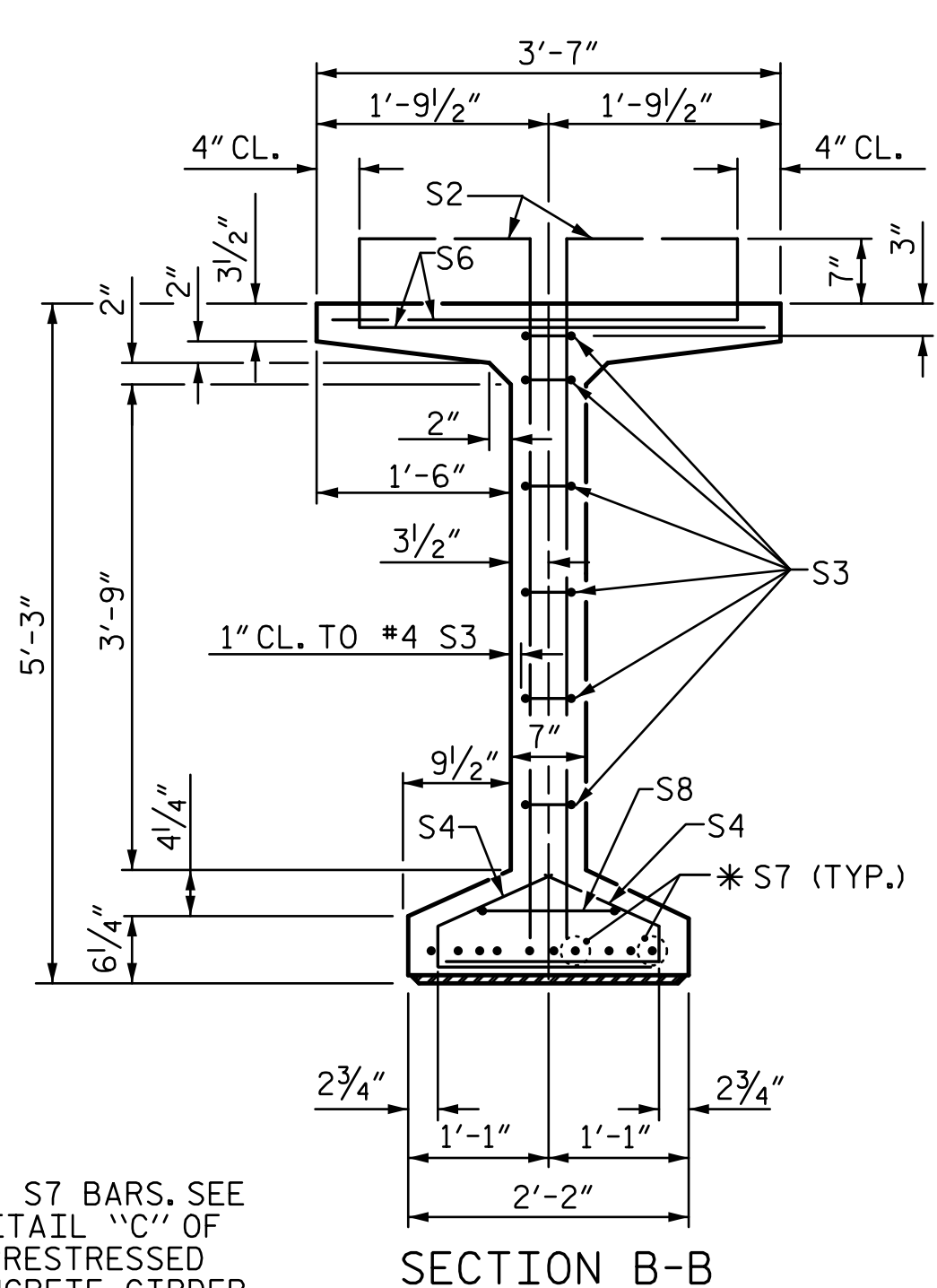
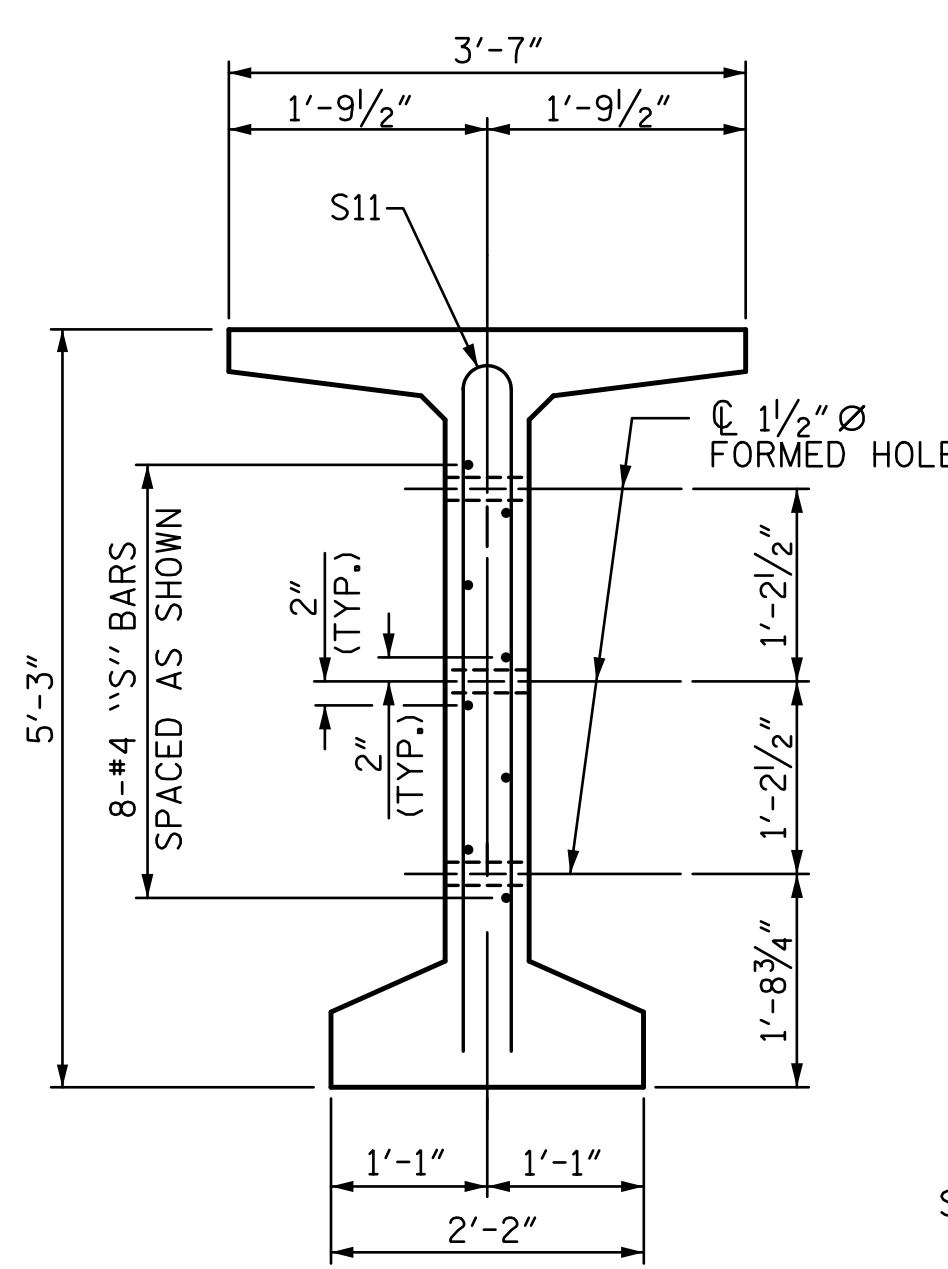


SECTION A-A



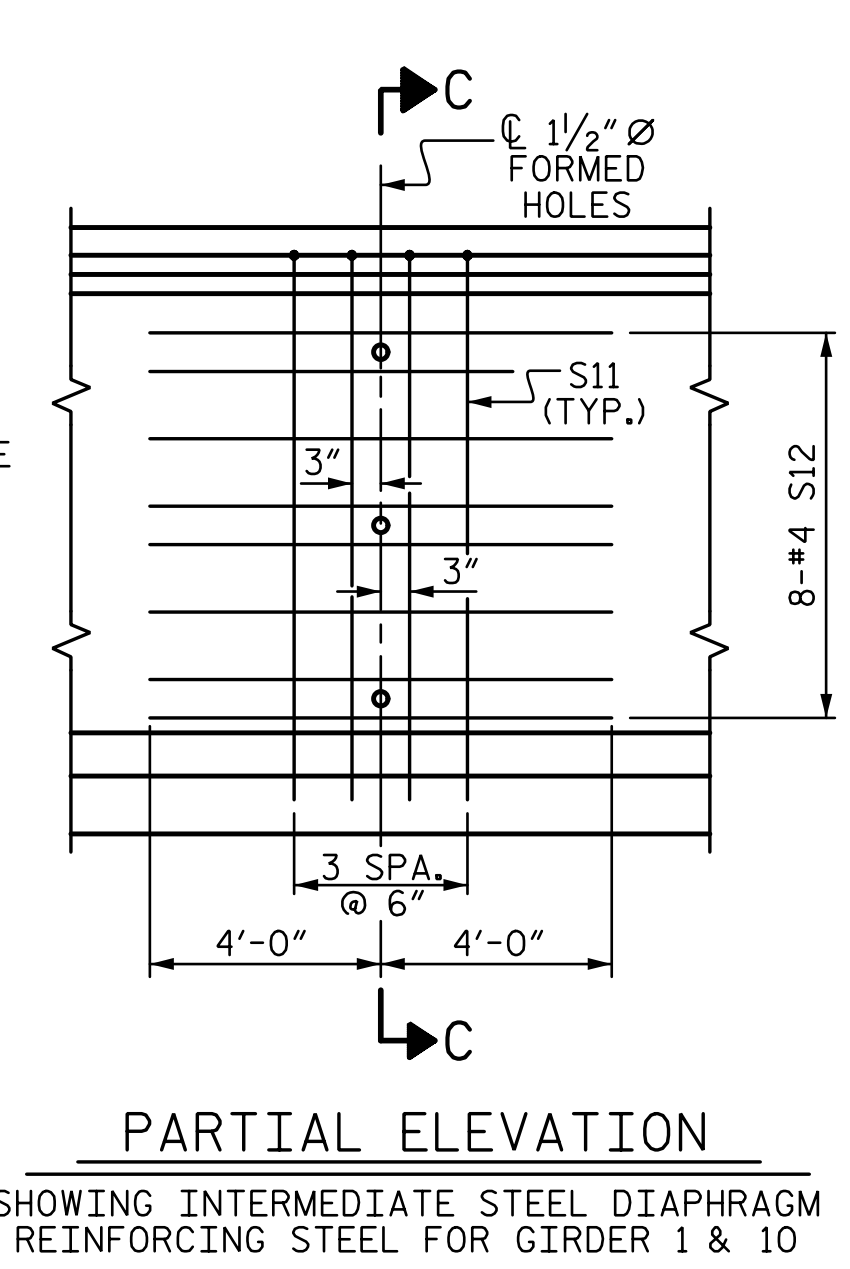
SECTION B-B

\* FOR S7 BARS, SEE  
DETAIL "C-C" OF  
PRESTRESSED  
CONCRETE GIRDER  
CONTINUOUS FOR LIVE  
LOAD DETAILS SHEET

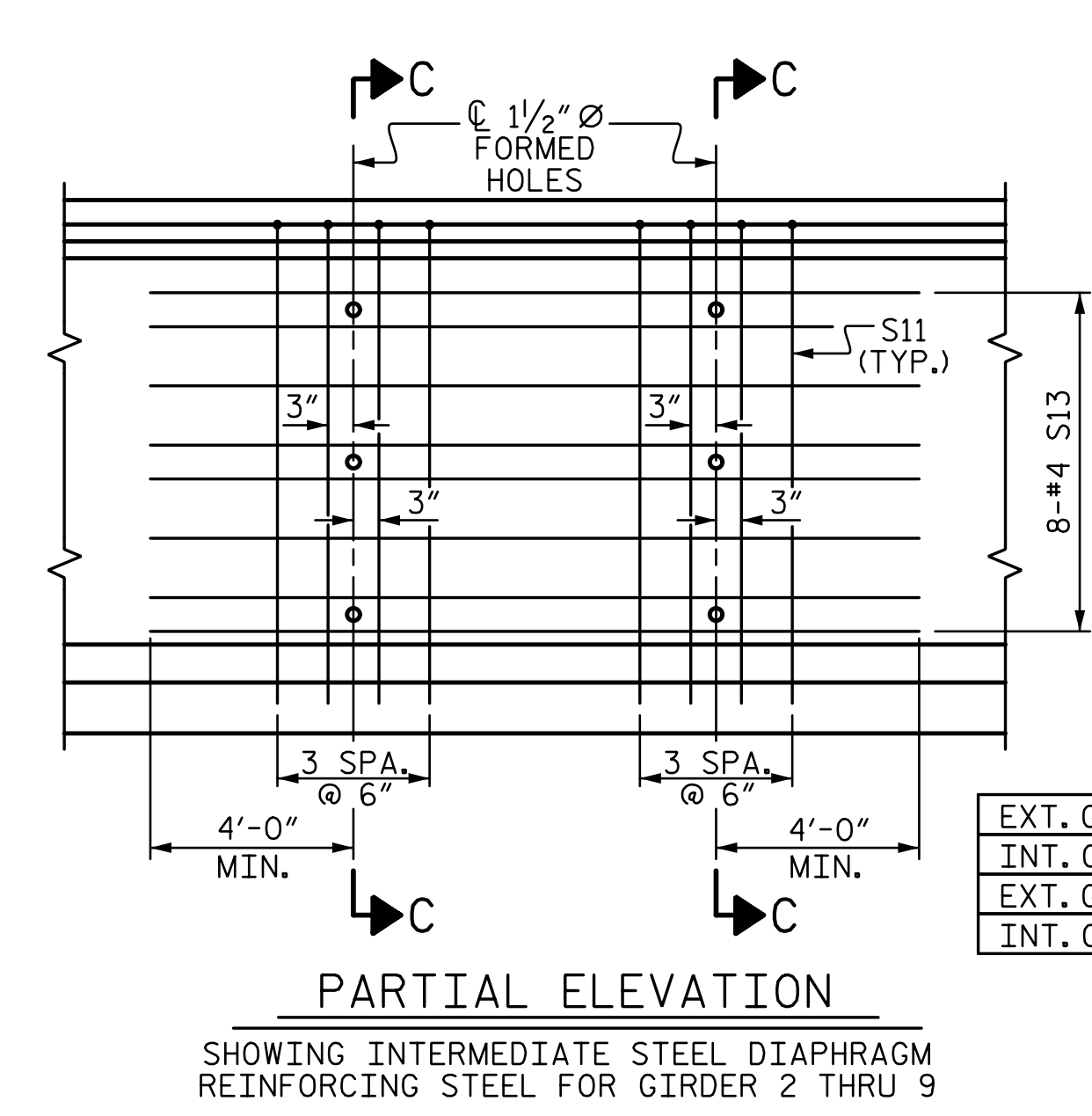


SECTION C-C

(S1, S6 AND S9 BARS NOT SHOWN)



PARTIAL ELEVATION  
SHOWING INTERMEDIATE STEEL DIAPHRAGM  
REINFORCING STEEL FOR GIRDER 1 & 10

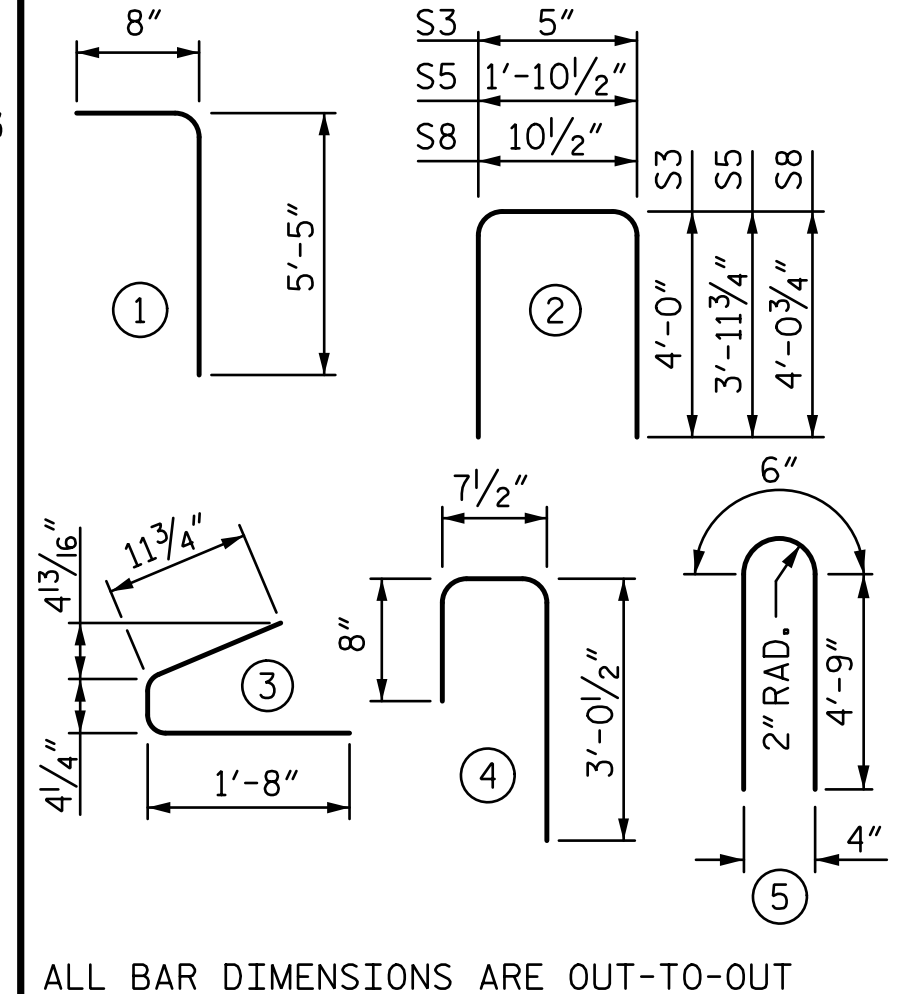


PARTIAL ELEVATION  
SHOWING INTERMEDIATE STEEL DIAPHRAGM  
REINFORCING STEEL FOR GIRDER 2 THRU 9

EXT. GDR.	S11	4	#5	5	10'-0"	42
INT. GDR.	S11	8	#5	5	10'-0"	83
EXT. GDR.	S12	8	#4	STR	8'-0"	43
INT. GDR.	S13	8	#4	STR	17'-0"	91

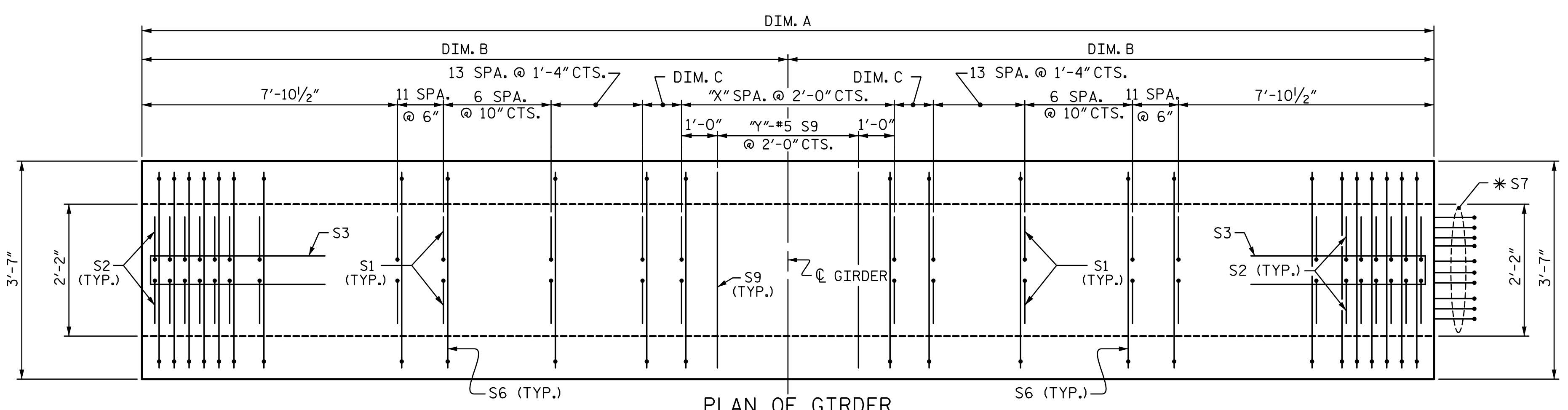
\* NOTE: S7 BARS SHALL BE BENT BEFORE SHIPMENT. HEAT BENDING SHALL NOT BE ALLOWED.

BAR TYPES

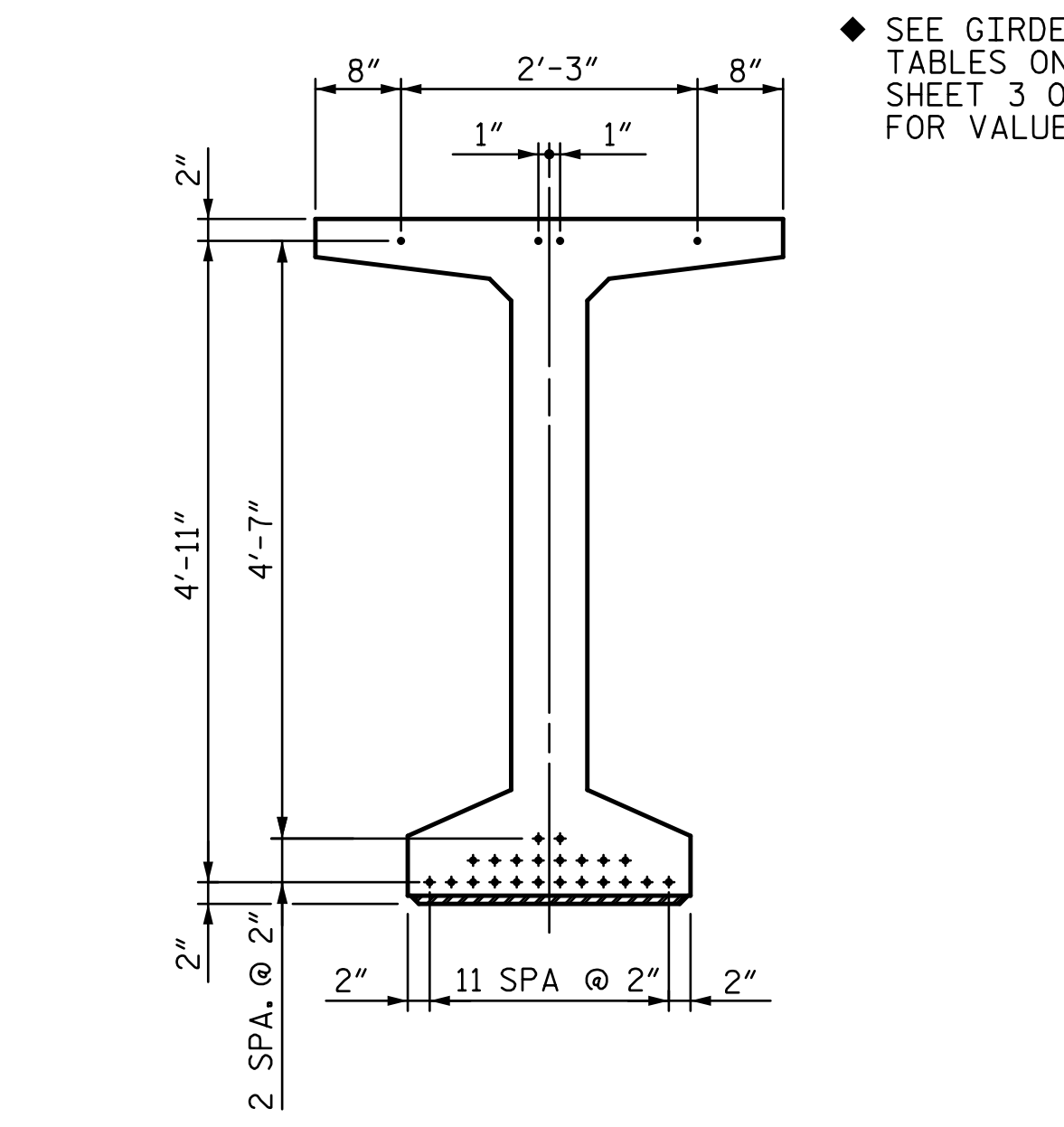


NOTES:

- FOR GIRDER DETAILS AND DIAPHRAGM HOLE LOCATIONS, SEE SHEET 3 OF 3.
- FOR VARIABLE DIMENSIONS AND QUANTITIES, SEE SHEET 3 OF 3.



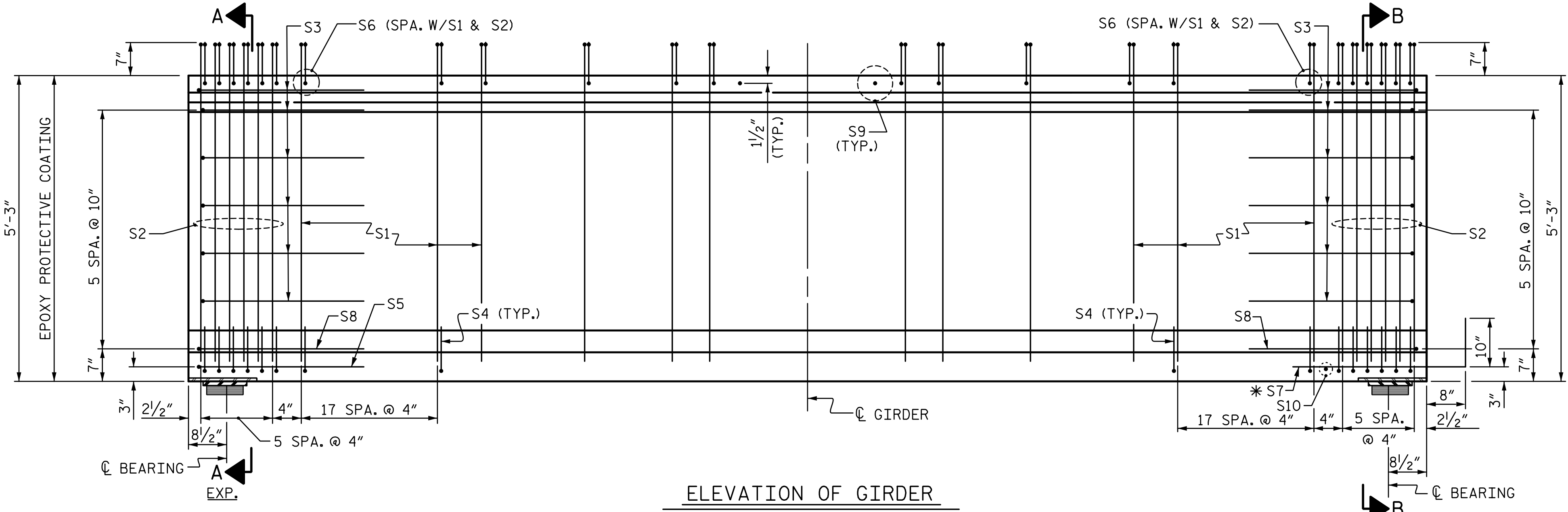
PLAN OF GIRDER



0.6" Ø LOW RELAXATION STRAND LAYOUT  
(26 STRANDS REQUIRED)

DEBONDING LEGEND

- FULLY BONDED STRANDS



ELEVATION OF GIRDER

PROJECT NO. U-4751  
NEW HANOVER COUNTY  
 STATION: 38+94.20 -L-  
 SHEET 1 OF 3

DOCUMENT NOT CONSIDERED FINAL  
UNLESS ALL SIGNATURES COMPLETED

STV 100 Years  
 STV ENGINEERS, INC.  
 900 West Trade St., Suite 715  
 Charlotte, NC 28202  
 NC License Number F-5991

STATE OF NORTH CAROLINA DEPARTMENT OF TRANSPORTATION RALEIGH		SUPERSTRUCTURE 63" PRESTRESSED CONCRETE MODIFIED BULB TEE		SPAN A	
REVISIONS					
NO.	BY:	DATE:	NO.	BY:	DATE:
1			3		
2			4		
SHEET NO. S1-13					TOTAL SHEETS 36

6/22/2017 3:15:28 PM R:\401.025\_U4751\_SMJ\_PCG\_013\_640201.dgn

DRAWN BY: <b>VMW</b>	DATE: <b>4-17</b>	DESIGN ENGINEER OF RECORD: <b>T. TOWNSEND</b>	DATE: <b>5-17</b>
CHECKED BY: <b>AJP</b>	DATE: <b>4-17</b>		