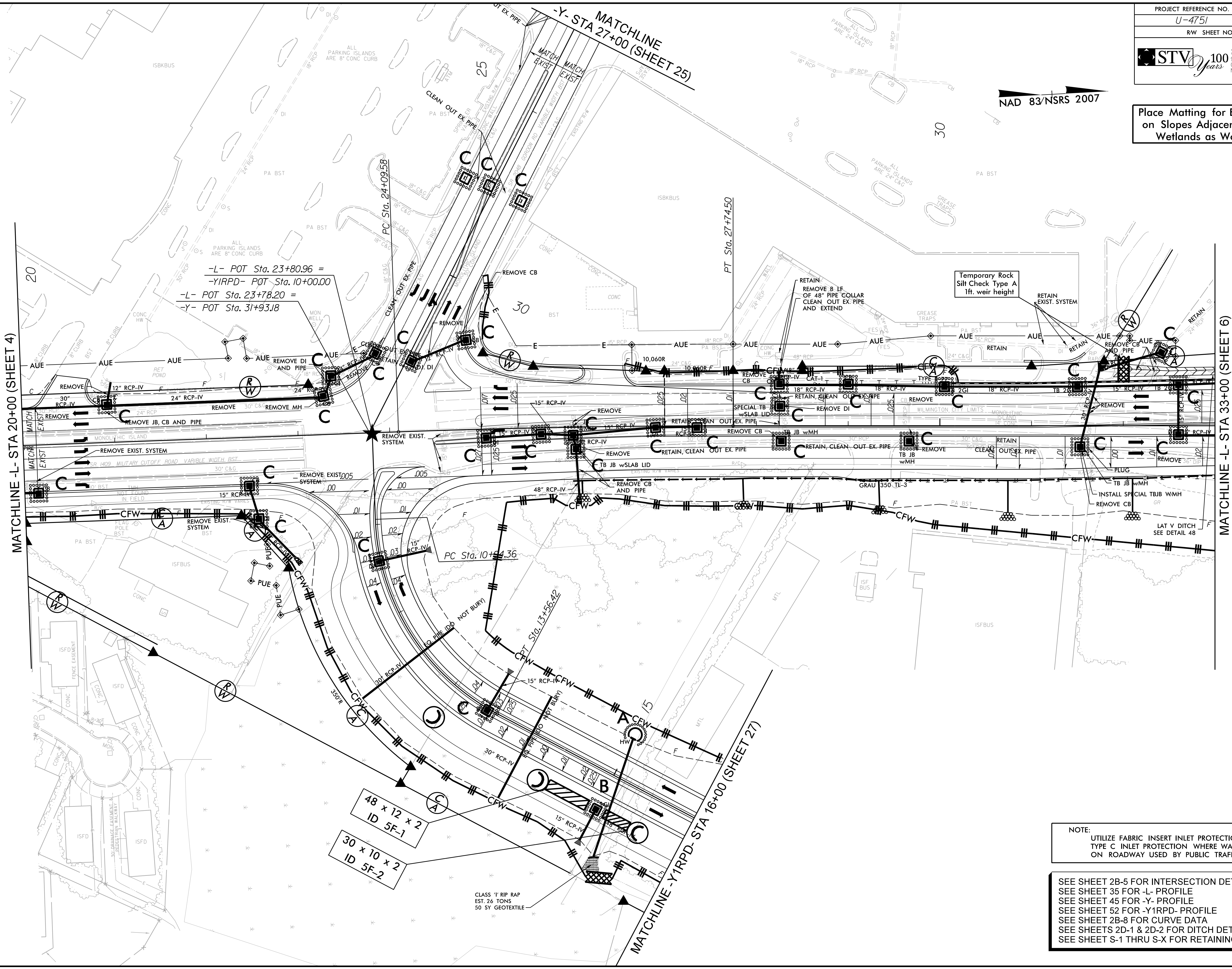


NAD 83/NSRS 2007

Place Matting for Erosion Control on Slopes Adjacent to Permitted Wetlands as Work Allows.



MATCHLINE -L- STA 20+00 (SHEET 4)

MATCHLINE -L- STA 33+00 (SHEET 6)

-L- POT Sta. 23+80.96 =
 -YIRPD- POT Sta. 10+00.00
 -L- POT Sta. 23+78.20 =
 -Y- POT Sta. 31+93.18

Temporary Rock Silt Check Type A
 1ft. weir height

48 x 12 x 2
 ID 5F-1

30 x 10 x 2
 ID 5F-2

CLASS 'I' RIP RAP
 EST. 2.6 TONS
 50' SY GEOTEXTILE

NOTE:
 UTILIZE FABRIC INSERT INLET PROTECTION IN LIEU OF TYPE C INLET PROTECTION WHERE WATER MIGHT POND ON ROADWAY USED BY PUBLIC TRAFFIC.

SEE SHEET 2B-5 FOR INTERSECTION DETAILS
 SEE SHEET 35 FOR -L- PROFILE
 SEE SHEET 45 FOR -Y- PROFILE
 SEE SHEET 52 FOR -Y1RPD- PROFILE
 SEE SHEET 2B-8 FOR CURVE DATA
 SEE SHEETS 2D-1 & 2D-2 FOR DITCH DETAILS
 SEE SHEET S-1 THRU S-X FOR RETAINING WALL PLANS

6/2/2017
 R:\Environmental\Design\U4751\EC_psh34.dgn
 P:\chims