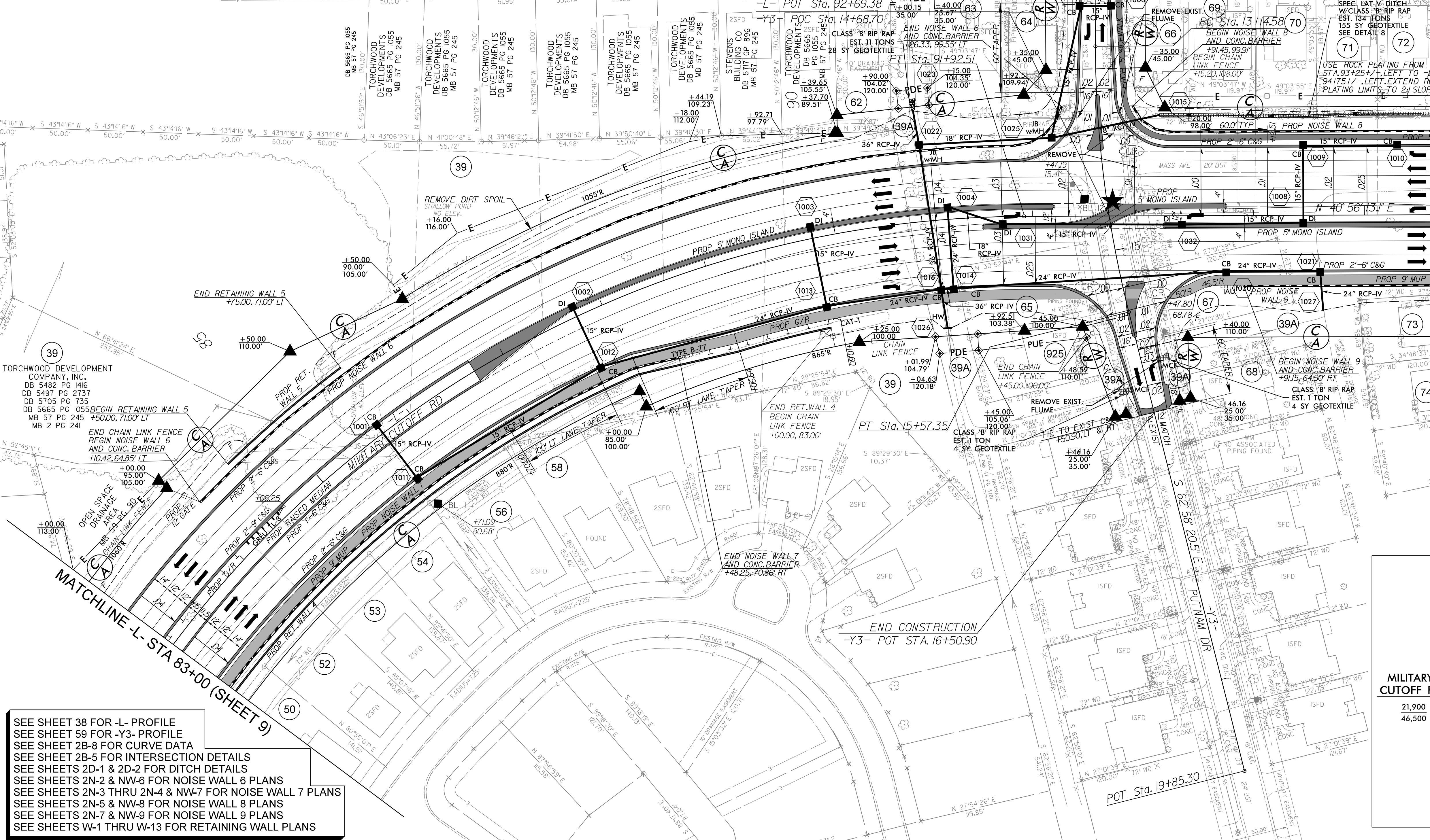


- | | | | |
|--|---|---|--|
| 50 BENTON KENNETH H JR
DB 5696 PG 1967
MB 56 PG 170 | 39 TORCHWOOD DEVELOPMENT COMPANY
DB 5644 PG 1291
MB 55 PG 165 | 67 NCDOT
DB 5878 PG 165
MB 48 PG 61 | 73 CINDY B. GASKINS
DB 5696 PG 1672
MB 45 PG 206 |
| 52 CANNADY WILLIAM B III & SHEENA M
DB 5652 PG 796
MB 56 PG 170 | 62 CHRISTOPHER MCCONNELL AND REBECCA MCCONNELL
DB 5839 PG 2910 | 68 STEVEN A. KING
DB 5841 PG 1962
MB 48 PG 61 | 74 MARY RADER HEINDENRICH, WIDOW
DB 5718 PG 978
MB 45 PG 206 |
| 53 DUFFY TARALYN ETAL
DB 5664 PG 689
MB 56 PG 170 | 63 SHAWN BELSCHNER
DB 5051 PG 1822
MB 48 PG 61 | 69 RYAN D BIRTLES
DB 5501 PG 595
MB 48 PG 61 | 75 KIMBERLY D. MALDONADO
DB 5811 PG 1422
MB 46 PG 248 |
| 54 KATHY EPPERSON
DB 5760 PG 2817
MB 56 PG 170 | 64 ROGER A WOOD
DB 5432 PG 1188
MB 48 PG 61 | 70 DENNIS G STOKLEY
DB 5064 PG 2518
MB 46 PG 248 | 925 NCDOT
DB 5168 PG 1727
MB 48 PG 61 |
| 56 STEVEN SHADE
DB 5733 PG 2080
MB 56 PG 170 | 65 NCDOT
DB 5878 PG 165
MB 48 PG 61 | 71 SARA ROBIN TOOTHMAN
DB 5802 PG 2059
MB 46 PG 248 | |
| 39 TORCHWOOD DEVELOPMENT COMPANY, INC.
DB 5482 PG 1416
DB 5497 PG 2737
DB 5705 PG 735
DB 5665 PG 1055
MB 57 PG 245
MB 2 PG 241 | 66 ELIZABETH A WRIGHT
DB 5284 PG 1338
MB 48 PG 61 | 72 TASHA L COLEY
DB 5477 PG 2963
MB 46 PG 248 | |
| 58 MICHAEL J. JAEB
DB 5764 PG 2262
MB 56 PG 170 | 39A SAVANA LAND COMPANY, LLC
MB 59 PG 164-165 | | |



MATCHLINE L- STA 96+00 (SHEET 11)

SEE SHEET 38 FOR -L- PROFILE
 SEE SHEET 59 FOR -Y3- PROFILE
 SEE SHEET 2B-8 FOR CURVE DATA
 SEE SHEET 2B-5 FOR INTERSECTION DETAILS
 SEE SHEETS 2D-1 & 2D-2 FOR DITCH DETAILS
 SEE SHEETS 2N-2 & NW-6 FOR NOISE WALL 6 PLANS
 SEE SHEETS 2N-3 THRU 2N-4 & NW-7 FOR NOISE WALL 7 PLANS
 SEE SHEETS 2N-5 & NW-8 FOR NOISE WALL 8 PLANS
 SEE SHEETS 2N-7 & NW-9 FOR NOISE WALL 9 PLANS
 SEE SHEETS W-1 THRU W-13 FOR RETAINING WALL PLANS

