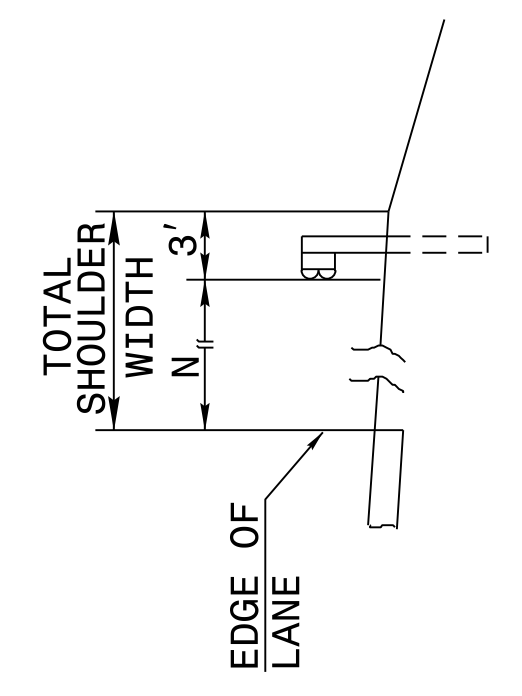
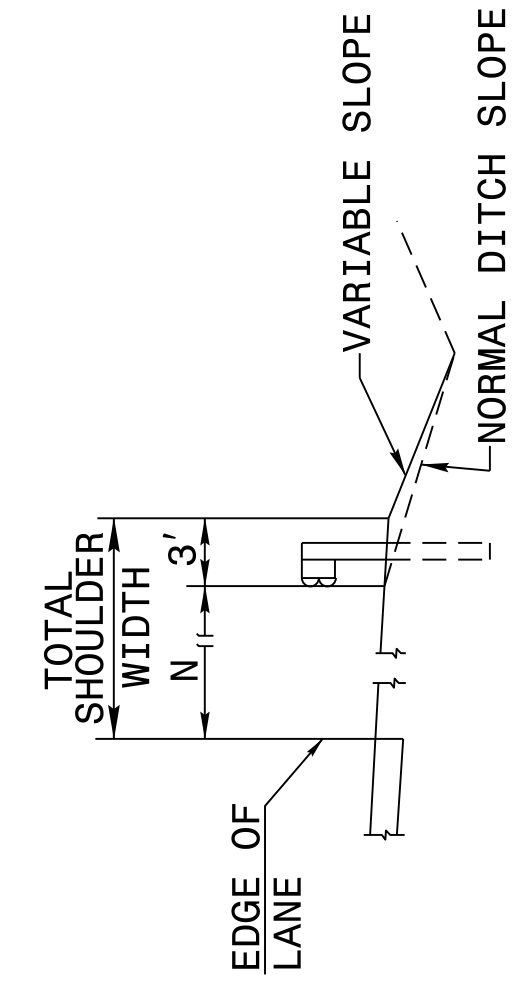


24-MAY-2017 11:37 S:\Contracts\Special Details\Standard Drawings\2012 Standard Drawings\Division 8\862d01 862d03 862d01.dgn  
 Jhowerton AT:CS0-292595

STATE OF NORTH CAROLINA  
 DEPT. OF TRANSPORTATION  
 DIVISION OF HIGHWAYS  
 RALEIGH, N.C.

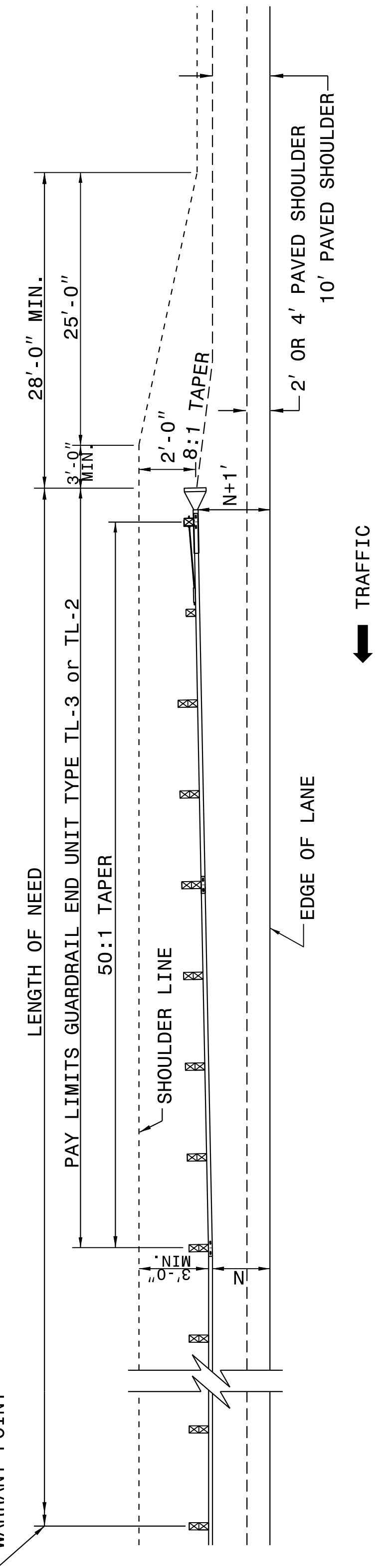


**FILL SECTION**



**CUT SECTION**

"N" = DISTANCE FROM EDGE OF LANE TO FACE OF GUARDRAIL WHERE GUARDRAIL IS PARALLEL TO LANE.



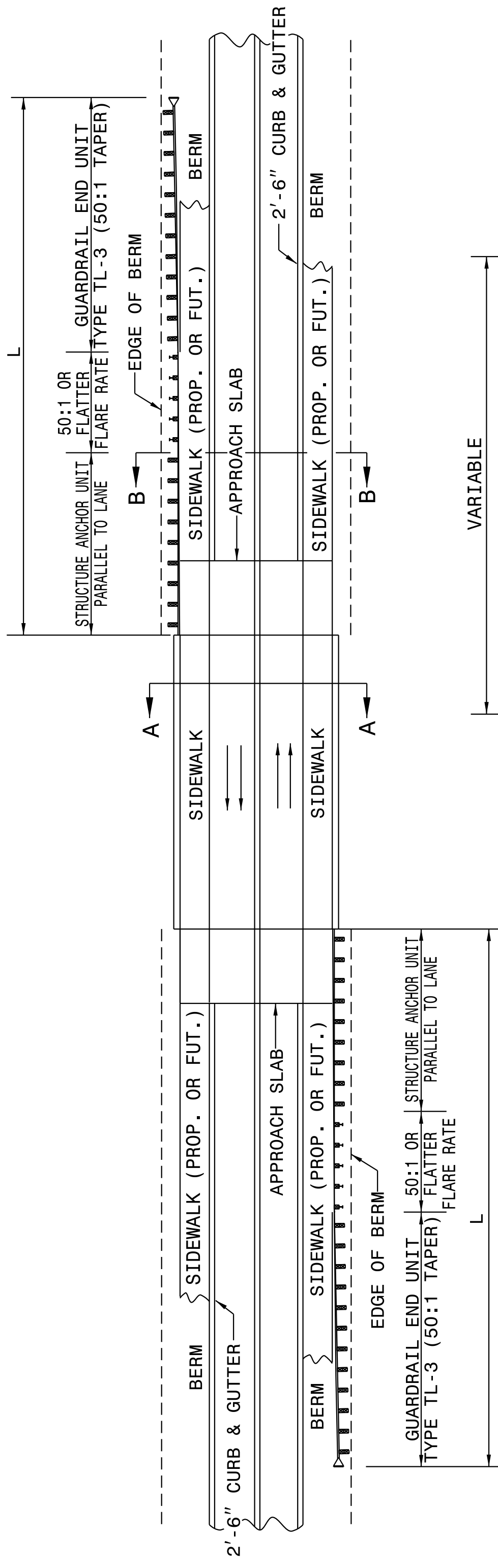
FOR POSTED SPEEDS ≥ 45mph USE GREU TYPE TL-3  
 FOR POSTED SPEEDS < 45mph USE GREU TYPE TL-2

ROADWAY DETAIL DRAWING FOR  
**GUARDRAIL PLACEMENT**

SHEET 6 OF 11  
**862D01**

**DETAIL OF BEGINNING OF GUARDRAIL IN CUT OR FILL SECTION**

STATE OF NORTH CAROLINA  
 DEPT. OF TRANSPORTATION  
 DIVISION OF HIGHWAYS  
 RALEIGH, N.C.



MINIMUM GUARDRAIL LENGTHS "L" REQUIRED AT BRIDGE APPROACHES ON 2'-6" CONCRETE CURB AND GUTTER ROADWAYS	"L"
DESIGN SPEED (MPH)	150'
	225'

NOTE: "L" VALUES ARE BASED ON NO HAZARDS OTHER THAN END OF BRIDGE BEING PRESENT WITHIN THE CLEAR ZONE.

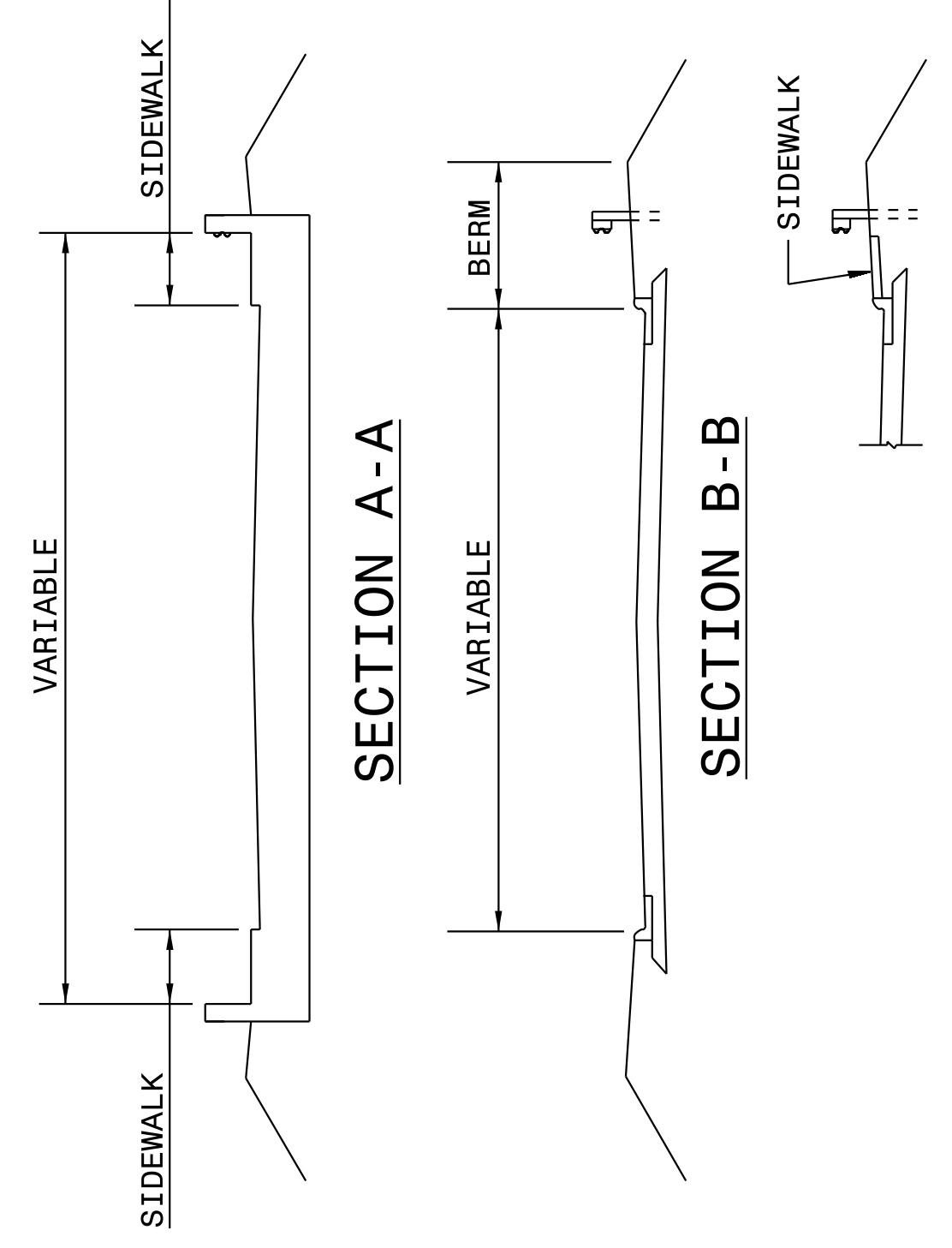
SEE STD. 862D03 FOR STRUCTURE ANCHOR UNITS.

FOR POSTED SPEEDS ≥ 45mph USE GREU TYPE TL-3  
 FOR POSTED SPEEDS < 45mph USE GREU TYPE TL-2

ROADWAY DETAIL DRAWING FOR  
**GUARDRAIL PLACEMENT**

SHEET 5 OF 11  
**862D01**

**STANDARD GUARDRAIL PLACEMENT AT BRIDGES WITH 2'-6" CONCRETE CURB AND GUTTER**

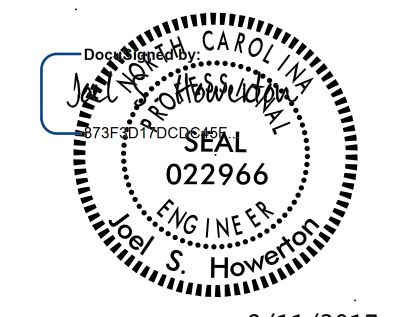


DOCUMENT NOT CONSIDERED FINAL  
 UNLESS ALL SIGNATURES COMPLETED

**CONTRACT STANDARDS AND DEVELOPMENT UNIT**  
 Office 919-707-6950 FAX 919-250-4119

**SEE TITLE BLOCK**

ORIGINAL BY: J HOWERTON DATE: 06-22-12  
 MODIFIED BY: DATE:  
 CHECKED BY: DATE:  
 FILE SPEC.: DATE:



8/11/2017