

**This electronic collection of documents is provided
for the convenience of the user
and is Not a Certified Document –**

**The documents contained herein were originally issued
and sealed by the individuals whose names and license
numbers appear on each page, on the dates appearing
with their signature on that page.**

**This file or an individual page
shall not be considered a certified document.**

09.08/99

TIP PROJECT: U-2579C

STATE OF NORTH CAROLINA
DIVISION OF HIGHWAYS

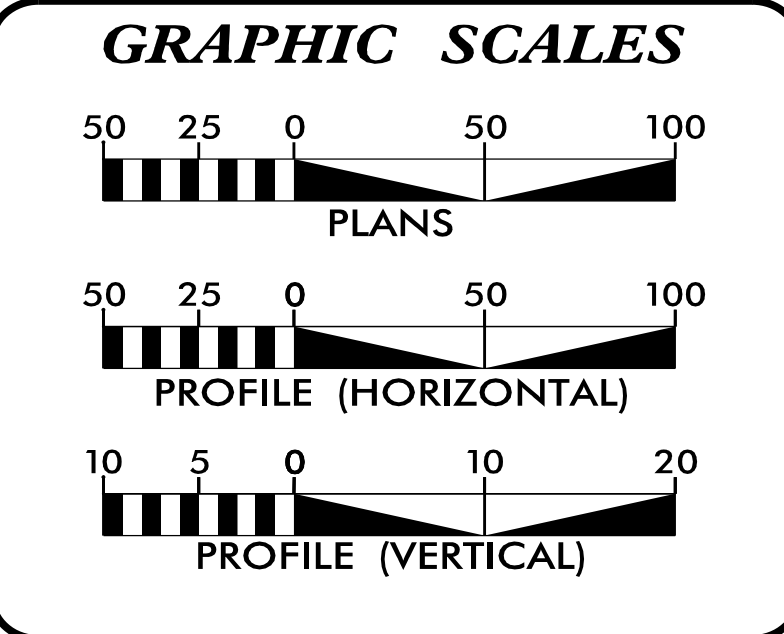
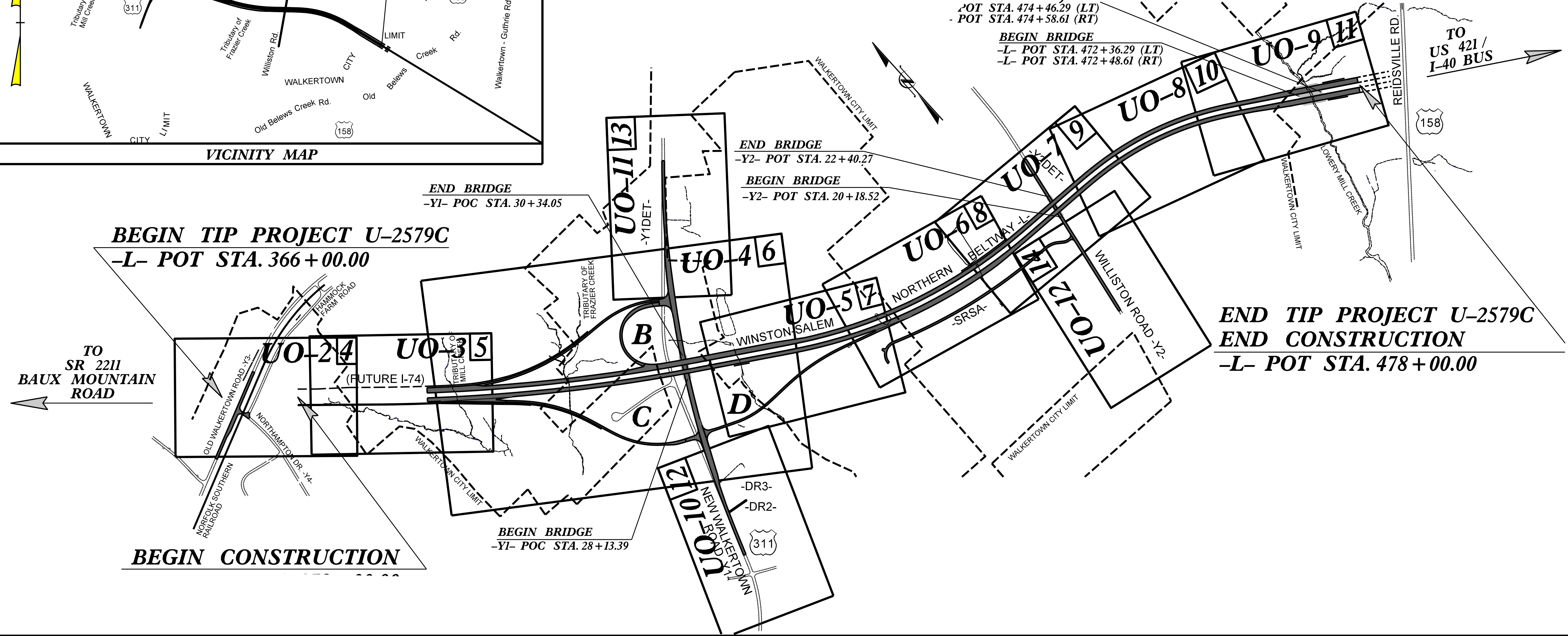
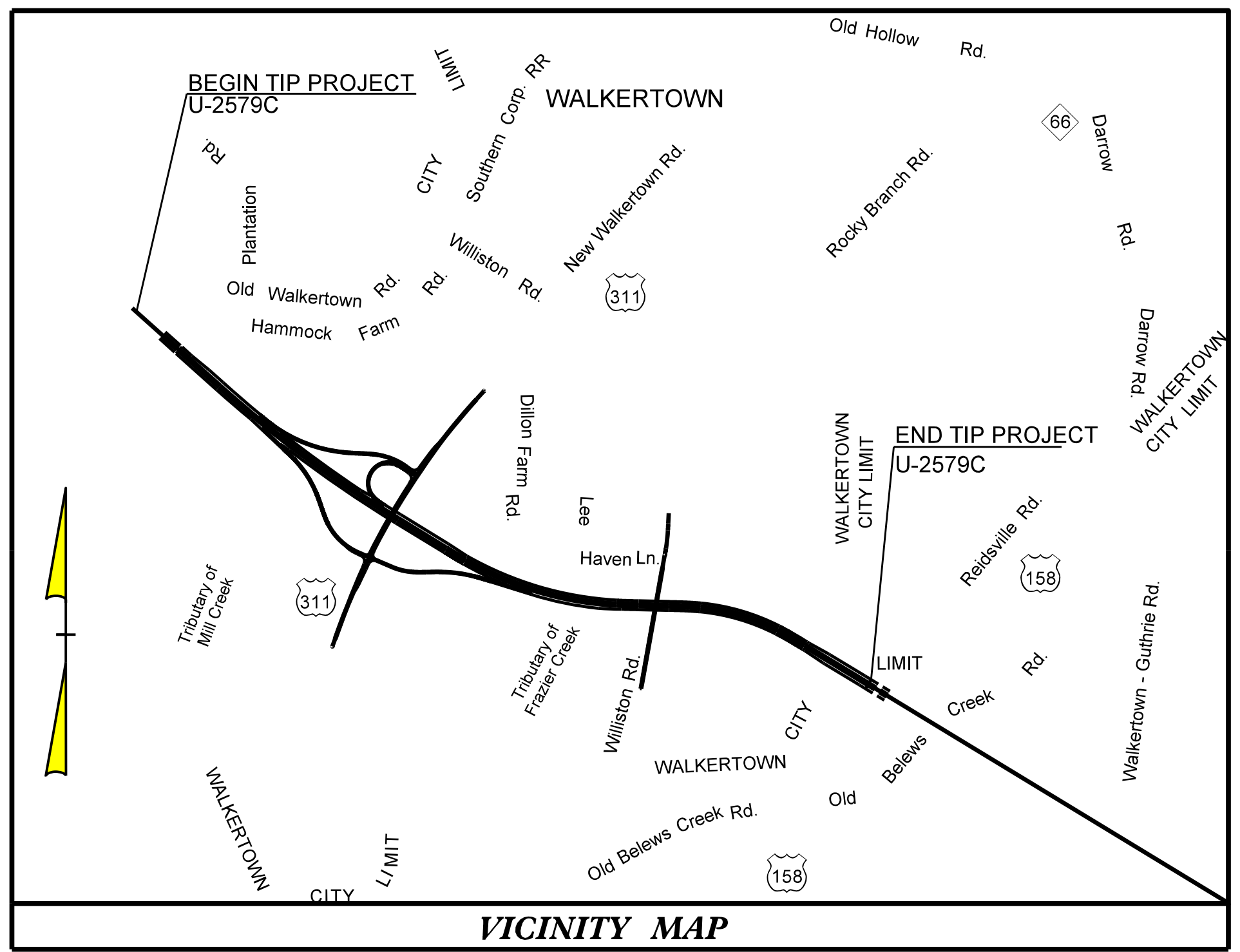
| | |
|------------|-----------|
| T.I.P. NO. | SHEET NO. |
| U-2579C | UO-1 |

NOTE:
ALL UTILITY WORK SHOWN ON THIS SHEET IS DONE BY OTHERS.
NO PAYMENT WILL BE MADE TO THE CONTRACTOR FOR UTILITY WORK SHOWN ON THIS SHEET.

UTILITIES BY OTHERS PLANS FORSYTH COUNTY

LOCATION: WINSTON-SALEM NORTHERN BELTWAY (EASTERN SECTION)
FROM US 311 TO US 158 (FUTURE I-74)

TYPE OF WORK: OVERHEAD POWER, GAS AND COMMUNICATION RELOCATIONS



INDEX OF SHEETS

| SHEET NO.: | DESCRIPTION: |
|-----------------|-----------------|
| UO-1 | TITLE SHEET |
| UO-2 THRU UO-12 | UBO PLAN SHEETS |

UTILITY OWNERS WITH CONFLICTS

- (A) POWER (DISTRIBUTION) - DUKE ENERGY
- (B) POWER (TRANSMISSION) - DUKE ENERGY
- (C) COMMUNICATIONS - AT&T
- (D) COMMUNICATIONS - TIME WARNER CABLE
- (E) COMMUNICATIONS - CENTURYLINK
- (F) GAS - PIEDMONT NATURAL GAS

PREPARED IN THE OFFICE OF:

JOHN FAISON UTILITY PROJECT MANAGER
JOHN FAISON PROJECT UTILITY COORDINATOR
JOSH BARBOUR PROJECT UTILITY DESIGNER

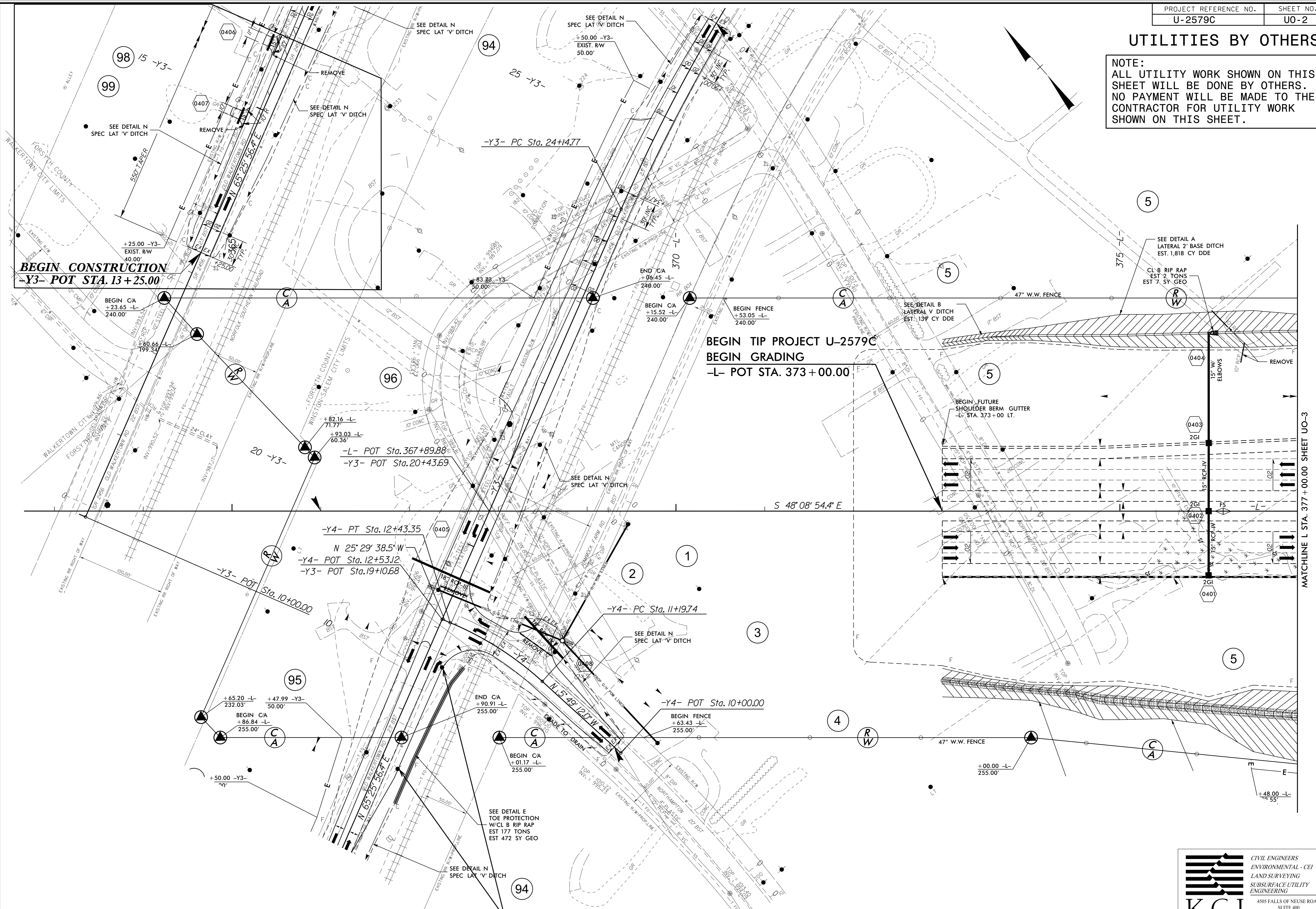
DIVISION OF HIGHWAYS
UTILITIES UNIT
1555 MAIL SERVICES CENTER
RALEIGH, NC 27699-1555
PHONE (919) 707-6690
FAX (919) 250-4151

DONNA JACKSON UTILITIES REGIONAL ENGINEER
J.T. YOON UTILITIES ENGINEER
ED REAMS UTILITIES AREA COORDINATOR
TANGA SAMPSON UTILITIES COORDINATOR

9:44:39 AM
250_001_U-2579c-ut-fsh-U001_psh.dgn
Division:

UTILITIES BY OTHERS

NOTE:
ALL UTILITY WORK SHOWN ON THIS SHEET WILL BE DONE BY OTHERS. NO PAYMENT WILL BE MADE TO THE CONTRACTOR FOR UTILITY WORK SHOWN ON THIS SHEET.



BEGIN CONSTRUCTION
-Y3- POT Sta. 13+25.00

BEGIN TIP PROJECT U-2579C
BEGIN GRADING
-L- POT Sta. 373+00.00

POLES SHOWN ON PLAN IN CONFLICT
DO NOT EXIST ON SITE

MATCHLINE L STA. 377+00.00 SHEET UO-3

5/14/99
26-JUL-2017 08:08
\\s01\proj\2579c\2579c_uo2.rdy4_U002_psh.dgn

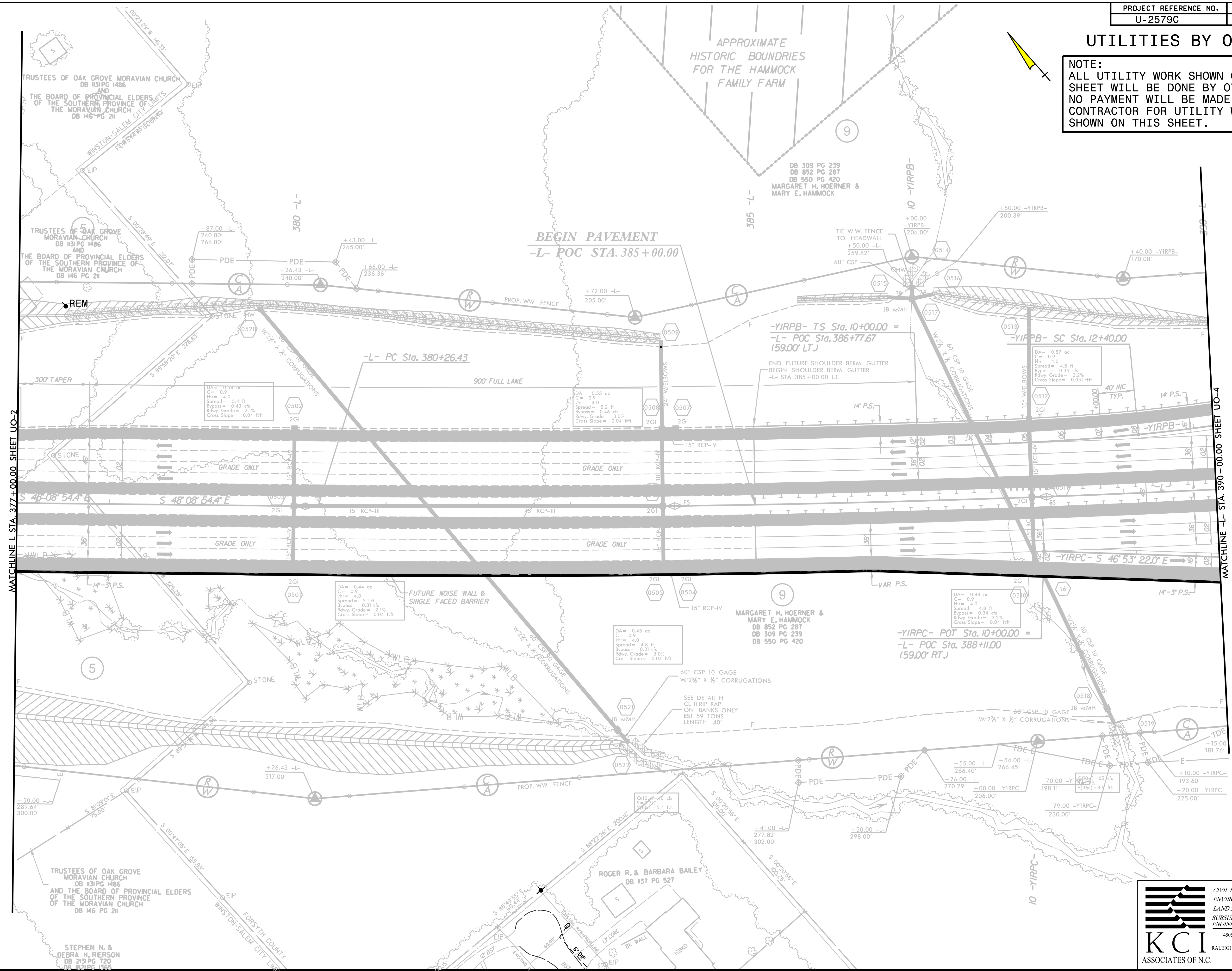


CIVIL ENGINEERS
ENVIRONMENTAL - CEI
LAND SURVEYING
SUBSURFACE UTILITY
ENGINEERING

4505 FALLS OF NEUSE ROAD
SUITE 400
RALEIGH, NORTH CAROLINA 27609
(919) 783-9214
WWW.KCI.COM

UTILITIES BY OTHERS

NOTE:
 ALL UTILITY WORK SHOWN ON THIS SHEET WILL BE DONE BY OTHERS.
 NO PAYMENT WILL BE MADE TO THE CONTRACTOR FOR UTILITY WORK SHOWN ON THIS SHEET.



MATCHLINE L STA. 377+00.00 SHEET UO-2

MATCHLINE -L- STA. 390+00.00 SHEET UO-4

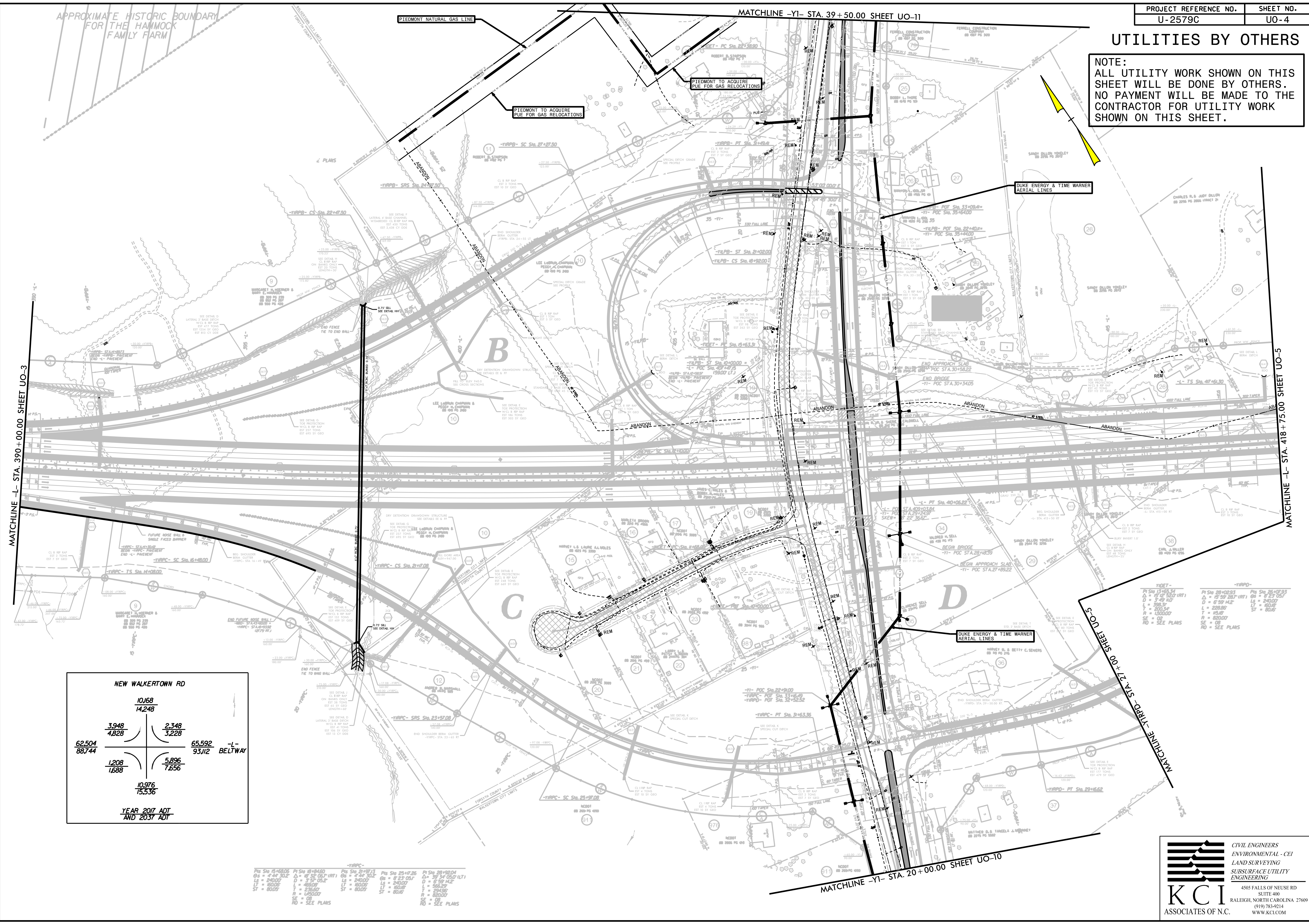


**CIVIL ENGINEERS
 ENVIRONMENTAL - CEI
 LAND SURVEYING
 SUBSURFACE UTILITY
 ENGINEERING**

4505 FALLS OF NEUSE RD
 SUITE 400
 RALEIGH, NORTH CAROLINA 27609
 (919) 783-0214
 WWW.KCI.COM

UTILITIES BY OTHERS

NOTE:
ALL UTILITY WORK SHOWN ON THIS SHEET WILL BE DONE BY OTHERS. NO PAYMENT WILL BE MADE TO THE CONTRACTOR FOR UTILITY WORK SHOWN ON THIS SHEET.



MATCHLINE -L- STA. 390+00.00 SHEET UO-3

MATCHLINE -L- STA. 418+75.00 SHEET UO-5

MATCHLINE -R- STA. 27+00 SHEET UO-3

MATCHLINE -YI- STA. 20+00.00 SHEET UO-10

NEW WALKERTOWN RD

| | |
|--------|--------|
| 10,168 | 14,248 |
| 3,948 | 2,348 |
| 4,828 | 3,228 |
| 62,504 | 88,744 |
| 1,208 | 1,688 |
| 5,896 | 7,656 |
| 10,976 | 15,536 |

-L- BELTWAY

YEAR 2017 ADT
AND 2037 ADT

TABLE

| | | | | |
|------------------|------------------------|------------------|------------------|------------------------|
| PI STA 15+68.00 | PI STA 18+94.00 | PI STA 21+97.13 | PI STA 25+17.25 | PI STA 28+92.04 |
| Δ = 4° 44' 30.2" | Δ = 10° 25' 00.7" (RT) | Δ = 9° 44' 34.2" | Δ = 8° 23' 05.1" | Δ = 39° 54' 05.0" (LT) |
| LS = 240.07 | D = 373' 03.2" | L = 240.07 | L = 240.07 | L = 240.07 |
| LT = 80.05 | L = 480.07 | LT = 80.05 | LT = 80.05 | L = 480.07 |
| ST = 80.05 | ST = 80.05 | ST = 80.05 | ST = 80.05 | ST = 80.05 |
| SE = 09 | SE = 09 | SE = 09 | SE = 09 | SE = 09 |
| RD = SEE PLANS | RD = SEE PLANS | RD = SEE PLANS | RD = SEE PLANS | RD = SEE PLANS |

TABLE

| | | | | |
|------------------|------------------------|------------------|------------------|------------------------|
| PI STA 15+68.00 | PI STA 18+94.00 | PI STA 21+97.13 | PI STA 25+17.25 | PI STA 28+92.04 |
| Δ = 4° 44' 30.2" | Δ = 10° 25' 00.7" (RT) | Δ = 9° 44' 34.2" | Δ = 8° 23' 05.1" | Δ = 39° 54' 05.0" (LT) |
| LS = 240.07 | D = 373' 03.2" | L = 240.07 | L = 240.07 | L = 240.07 |
| LT = 80.05 | L = 480.07 | LT = 80.05 | LT = 80.05 | L = 480.07 |
| ST = 80.05 | ST = 80.05 | ST = 80.05 | ST = 80.05 | ST = 80.05 |
| SE = 09 | SE = 09 | SE = 09 | SE = 09 | SE = 09 |
| RD = SEE PLANS | RD = SEE PLANS | RD = SEE PLANS | RD = SEE PLANS | RD = SEE PLANS |

KCI ASSOCIATES OF N.C.

CIVIL ENGINEERS
ENVIRONMENTAL - CEI
LAND SURVEYING
SUBSURFACE UTILITY
ENGINEERING

4505 FALLS OF NUSE RD
SUITE 400
RALEIGH, NORTH CAROLINA 27609
(919) 783-0214
WWW.KCI.COM

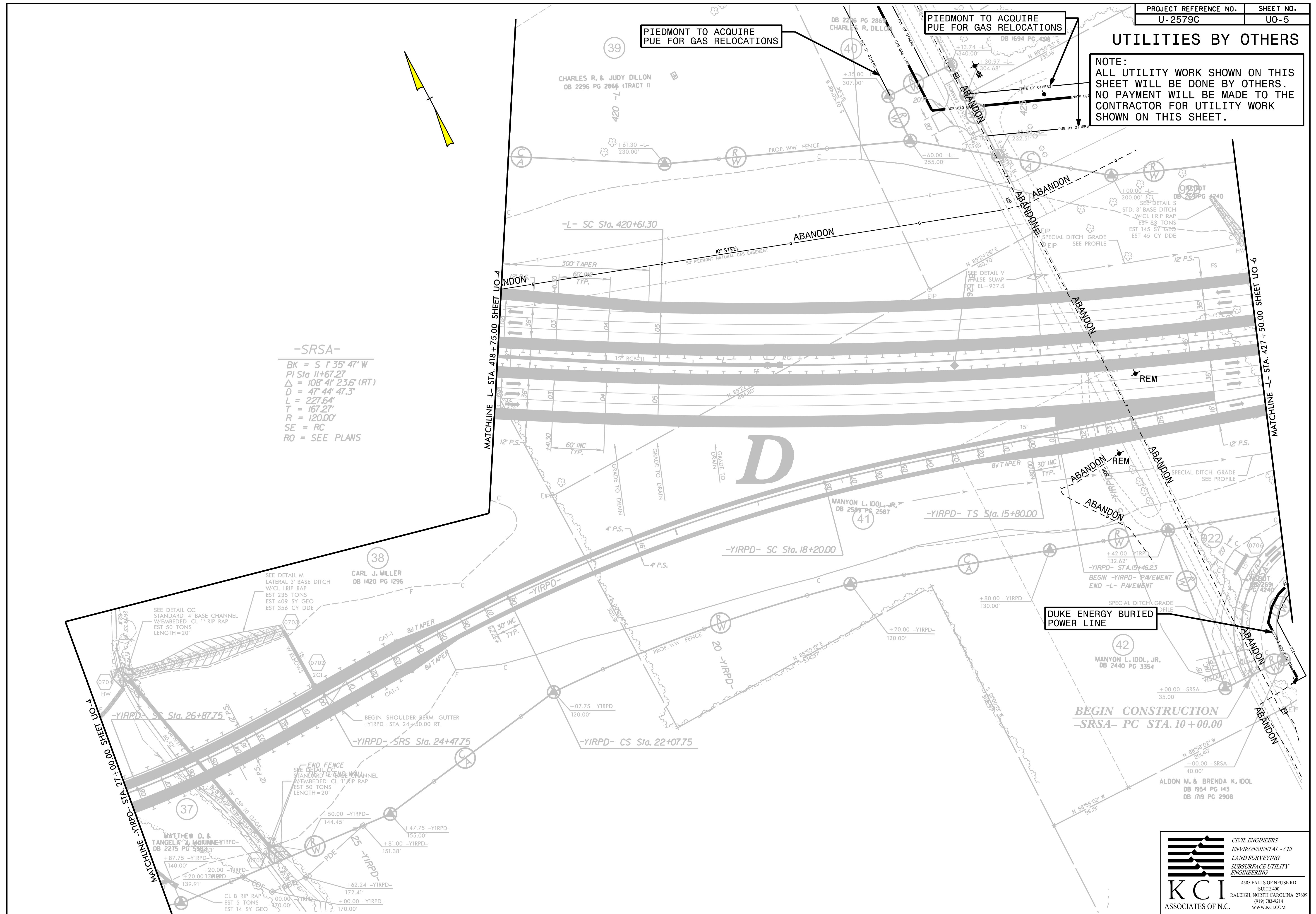
UTILITIES BY OTHERS

NOTE:
ALL UTILITY WORK SHOWN ON THIS SHEET WILL BE DONE BY OTHERS. NO PAYMENT WILL BE MADE TO THE CONTRACTOR FOR UTILITY WORK SHOWN ON THIS SHEET.

PIEDMONT TO ACQUIRE PUE FOR GAS RELOCATIONS

PIEDMONT TO ACQUIRE PUE FOR GAS RELOCATIONS

-SRSA-
 BK = S 1° 35' 47" W
 PI Sta 11+67.27
 Δ = 108° 41' 23.6" (RT)
 D = 47' 44" 47.3"
 L = 227.64'
 T = 167.27'
 R = 120.00'
 SE = RC
 RO = SEE PLANS



DUKE ENERGY BURIED POWER LINE

KCI
ASSOCIATES OF N.C.

CIVIL ENGINEERS
ENVIRONMENTAL - CEI
LAND SURVEYING
SUBSURFACE UTILITY ENGINEERING

4505 FALLS OF NEUSE RD
SUITE 400
RALEIGH, NORTH CAROLINA 27609
(919) 783-9214
WWW.KCI.COM

57 FARRELL B. & MARILYN E. BYERS DB 1658 PG 3455

UTILITIES BY OTHERS

NOTE:
ALL UTILITY WORK SHOWN ON THIS SHEET WILL BE DONE BY OTHERS. NO PAYMENT WILL BE MADE TO THE CONTRACTOR FOR UTILITY WORK SHOWN ON THIS SHEET.

ALL POLES AND UNDERGROUND ELECTRIC SHOWN IN SURVEY FILE NO LONGER EXIST AROUND THE POND, PER DUKE ENERGY.

PIEDMONT TO ACQUIRE PUE FOR GAS RELOCATIONS

PIEDMONT NATURAL GAS LINE & CAP

FARRELL B. & MARILYN BYERS DB 1316 PG 1549

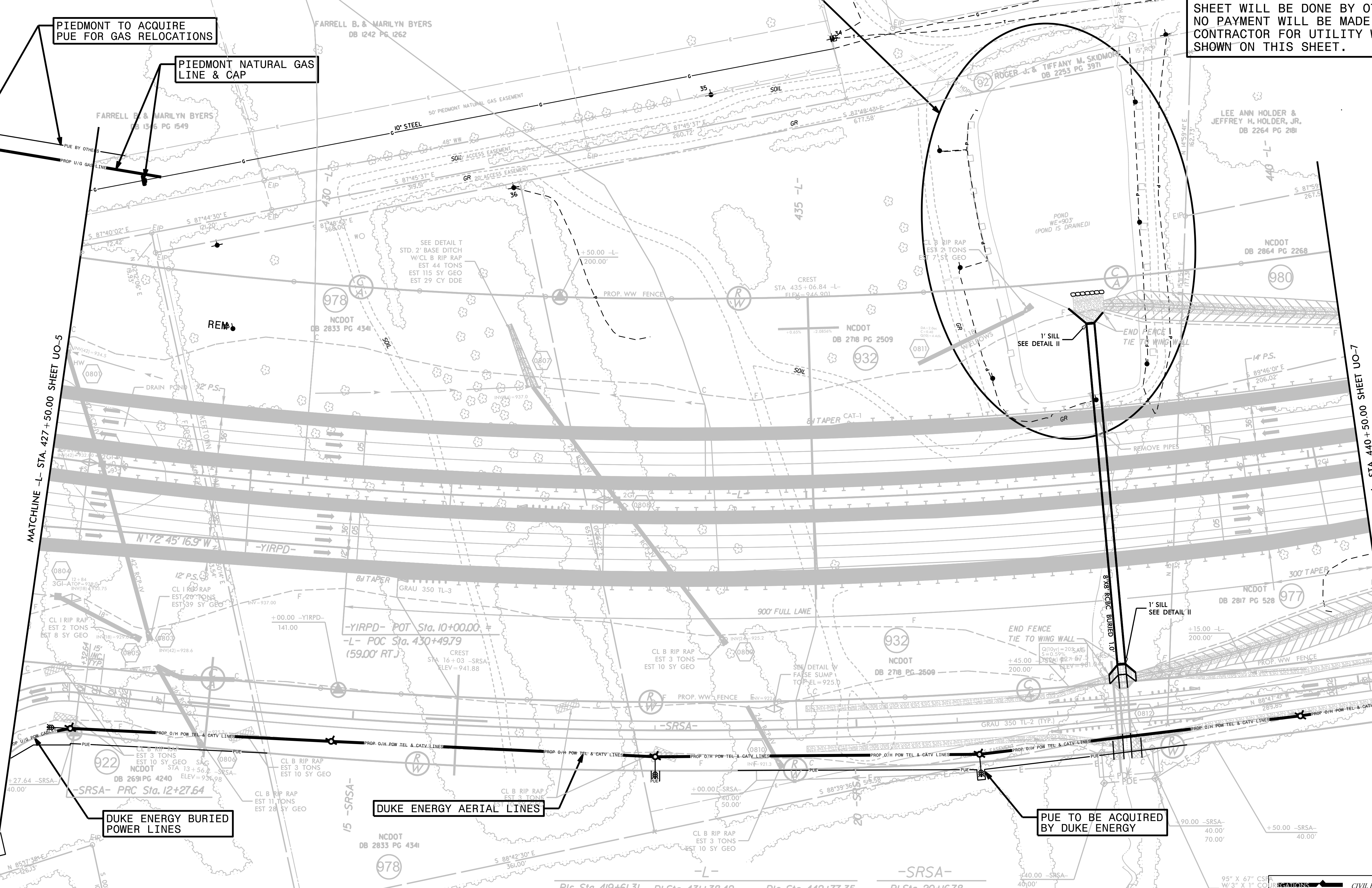
FARRELL B. & MARILYN BYERS DB 1242 PG 1262

LEE ANN HOLDER & JEFFREY H. HOLDER, JR. DB 2264 PG 2181

ROGER J. & TIFFANY M. SKIDMORE DB 2253 PG 3971

MATCHLINE -L- STA. 427+50.00 SHEET UO-5

MATCHLINE -L- STA. 440+50.00 SHEET UO-7



DUKE ENERGY BURIED POWER LINES

DUKE ENERGY AERIAL LINES

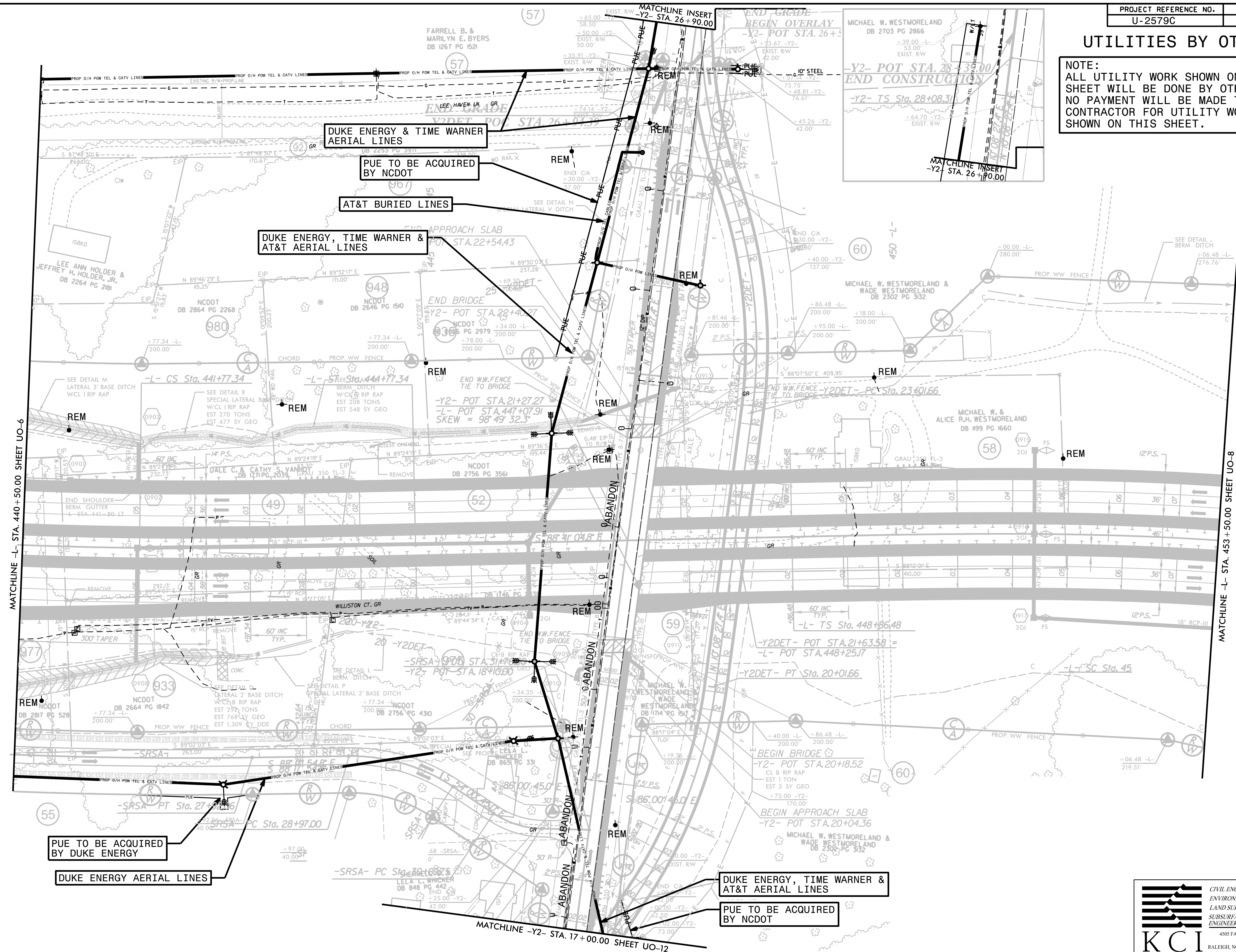
PUE TO BE ACQUIRED BY DUKE ENERGY

| | | | |
|---|--|---|---|
| <p>PIs Sta 419+61.31 $\Delta s = 1' 52' 13.3"$ $Ls = 300.00'$ $LT = 200.01'$ $ST = 100.01'$</p> | <p>PI Sta 431+38.42 $\Delta = 26' 23' 06.6"$ (LT) $D = 1' 14' 48.9"$ $L = 2,116.03'$ $T = 1,077.12'$ $R = 4,595.00'$</p> | <p>PIs Sta 442+77.35 $\Delta s = 1' 52' 13.3"$ $Ls = 300.00'$ $LT = 200.01'$ $ST = 100.01'$</p> | <p>PI Sta 20+16.78 $\Delta = 18' 35' 05.3"$ (LT) $D = 1' 11' 16.7"$ $L = 1,564.42'$ $T = 789.14'$ $R = 4,827.00'$</p> |
|---|--|---|---|

KCI ASSOCIATES OF N.C.
 CIVIL ENGINEERS
 ENVIRONMENTAL - CEI
 LAND SURVEYING
 SUBSURFACE UTILITY
 ENGINEERING
 4505 FALLS OF NEUSE RD
 SUITE 400
 RALEIGH, NORTH CAROLINA 27609
 (919) 783-9214
 WWW.KCI.COM

UTILITIES BY OTHERS

NOTE:
ALL UTILITY WORK SHOWN ON THIS SHEET WILL BE DONE BY OTHERS. NO PAYMENT WILL BE MADE TO THE CONTRACTOR FOR UTILITY WORK SHOWN ON THIS SHEET.



MATCHLINE -L- STA. 440+50.00 SHEET UO-6

MATCHLINE -L- STA. 453+50.00 SHEET UO-8

MATCHLINE -Y2- STA. 17+00.00 SHEET UO-12

UTILITIES BY OTHERS

NOTE:
 ALL UTILITY WORK SHOWN ON THIS SHEET WILL BE DONE BY OTHERS. NO PAYMENT WILL BE MADE TO THE CONTRACTOR FOR UTILITY WORK SHOWN ON THIS SHEET.

Pls Sta 451+6
 $\theta_s = 4' 11'' 32''$
 $L_s = 420.00'$
 $LT = 280.08'$
 $ST = 140.07'$



MATCHLINE -L- STA. 453+50.00 SHEET UO-7

MATCHLINE -L- STA. 465+50.00 SHEET UO-9

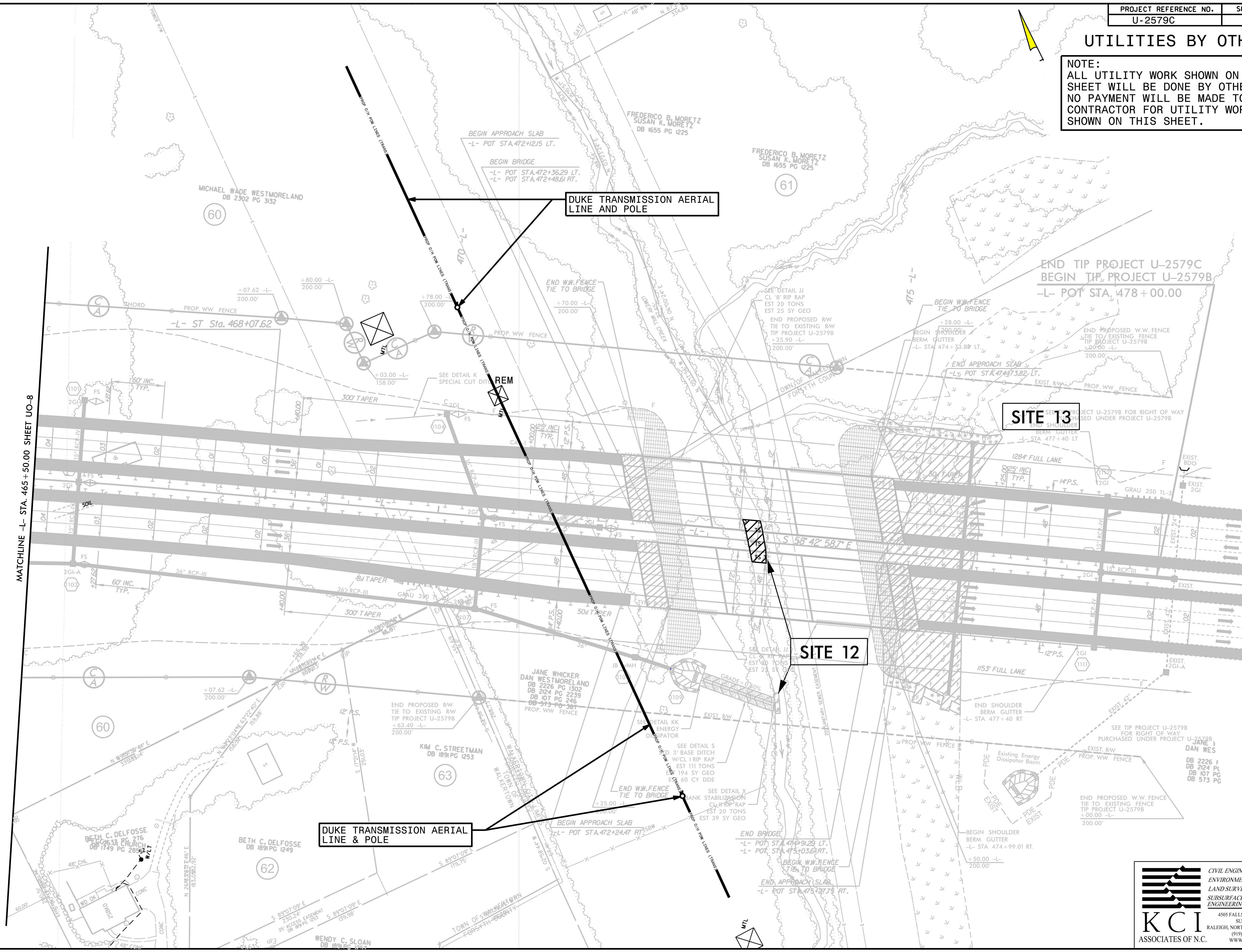


CIVIL ENGINEERS
ENVIRONMENTAL - CEI
LAND SURVEYING
SUBSURFACE UTILITY
ENGINEERING

4505 FALLS OF NEUSE RD
 SUITE 400
 RALEIGH, NORTH CAROLINA 27609
 (919) 783-0214
 WWW.KCI.COM

UTILITIES BY OTHERS

NOTE:
 ALL UTILITY WORK SHOWN ON THIS SHEET WILL BE DONE BY OTHERS. NO PAYMENT WILL BE MADE TO THE CONTRACTOR FOR UTILITY WORK SHOWN ON THIS SHEET.



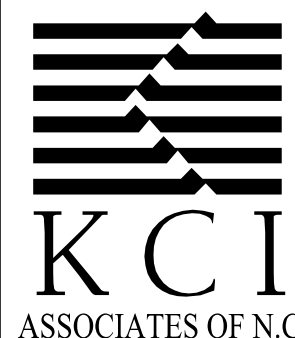
MATCHLINE -L- STA. 465 +50.00 SHEET UO-8

DUKE TRANSMISSION AERIAL LINE & POLE

DUKE TRANSMISSION AERIAL LINE AND POLE

SITE 12

SITE 13



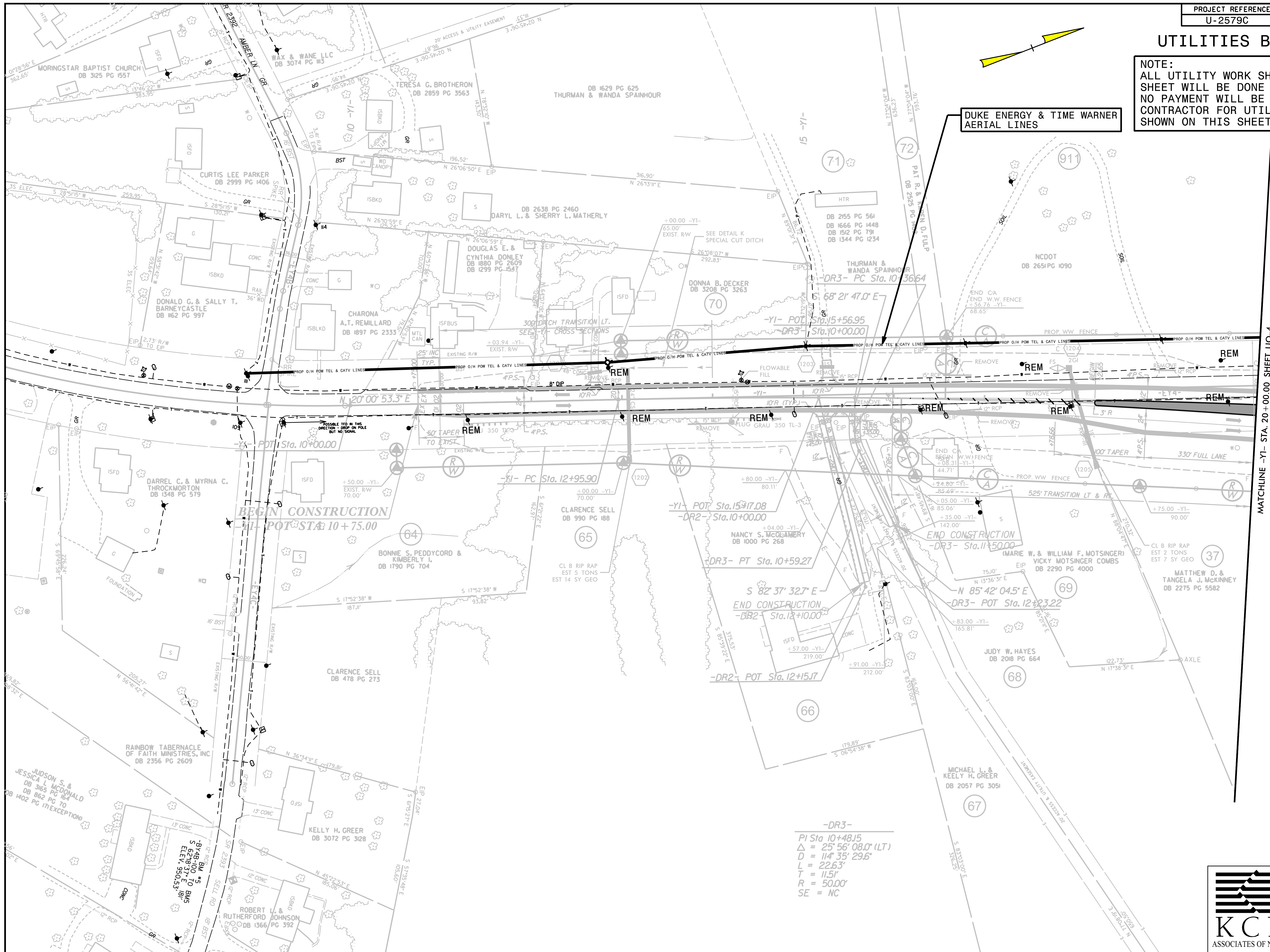
**CIVIL ENGINEERS
 ENVIRONMENTAL - CEI
 LAND SURVEYING
 SUBSURFACE UTILITY
 ENGINEERING**

4505 FALLS OF NEUSE RD
 SUITE 400
 RALEIGH, NORTH CAROLINA 27609
 (919) 783-0214
 WWW.KCI.COM

UTILITIES BY OTHERS

NOTE:
ALL UTILITY WORK SHOWN ON THIS SHEET WILL BE DONE BY OTHERS. NO PAYMENT WILL BE MADE TO THE CONTRACTOR FOR UTILITY WORK SHOWN ON THIS SHEET.

DUKE ENERGY & TIME WARNER AERIAL LINES



-DR3-

| | |
|--------|--------------------|
| PI Sta | 10+48.15 |
| Δ | 25° 56' 08.0" (LT) |
| D | 114' 35' 29.6" |
| L | 22.63' |
| T | 11.51' |
| R | 50.00' |
| SE | NC |

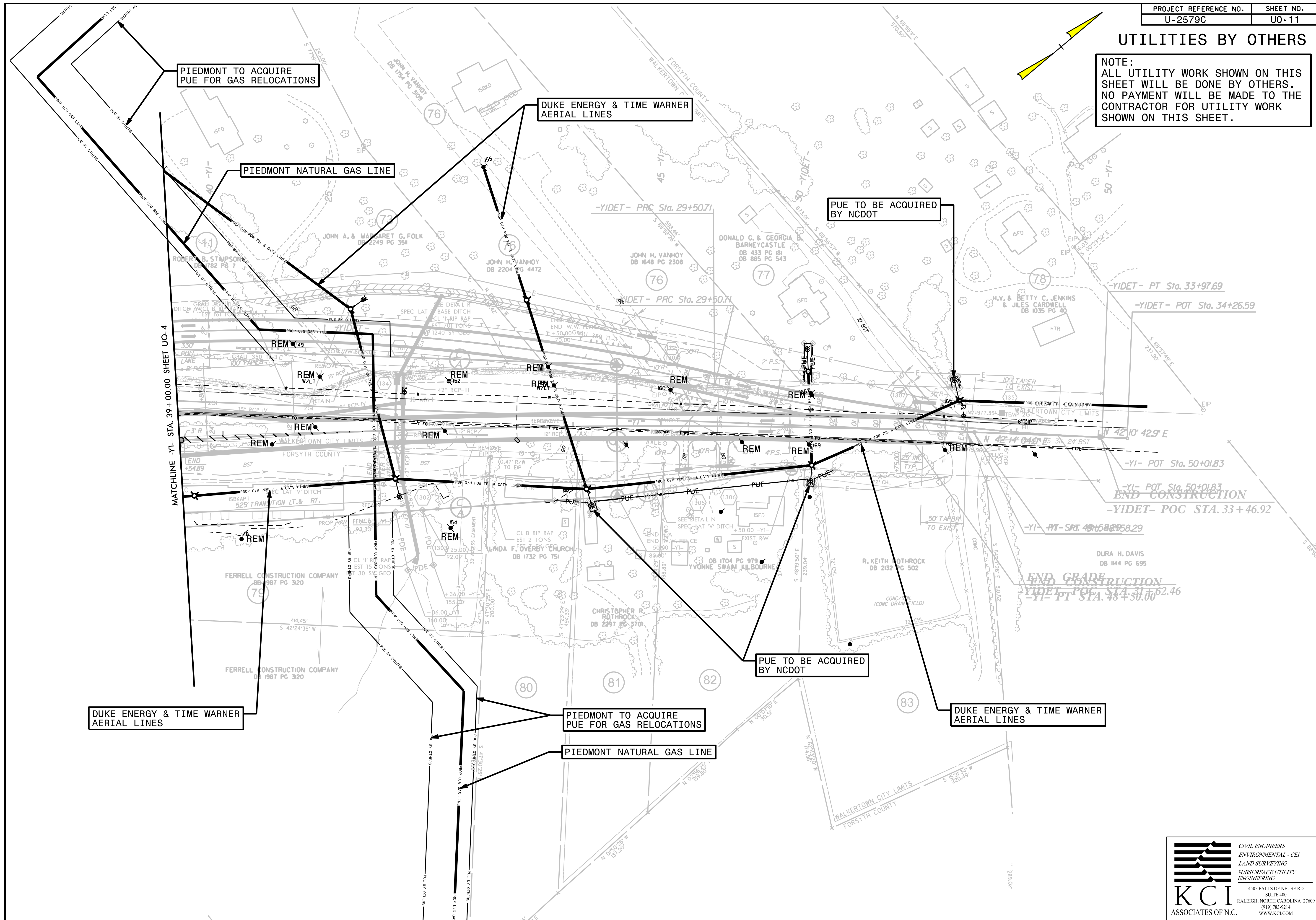
KCI
ASSOCIATES OF N.C.

CIVIL ENGINEERS
ENVIRONMENTAL - CEI
LAND SURVEYING
SUBSURFACE UTILITY
ENGINEERING

4505 FALLS OF NEUSE RD
SUITE 400
RALEIGH, NORTH CAROLINA 27609
(919) 783-0214
WWW.KCI.COM

UTILITIES BY OTHERS

NOTE:
 ALL UTILITY WORK SHOWN ON THIS SHEET WILL BE DONE BY OTHERS. NO PAYMENT WILL BE MADE TO THE CONTRACTOR FOR UTILITY WORK SHOWN ON THIS SHEET.



DUKE ENERGY & TIME WARNER AERIAL LINES

PIEDMONT TO ACQUIRE PUE FOR GAS RELOCATIONS

PIEDMONT NATURAL GAS LINE

PUE TO BE ACQUIRED BY NCDOT

DUKE ENERGY & TIME WARNER AERIAL LINES

UTILITIES BY OTHERS

NOTE:
ALL UTILITY WORK SHOWN ON THIS SHEET WILL BE DONE BY OTHERS. NO PAYMENT WILL BE MADE TO THE CONTRACTOR FOR UTILITY WORK SHOWN ON THIS SHEET.

PUE TO BE ACQUIRED BY NCDOT

AT&T BURIED TELEPHONE LINES

PUE TO BE ACQUIRED BY NCDOT

DUKE ENERGY, TIME WARNER & AT&T AERIAL LINES

BEGIN CONSTRUCTION
-Y2- POT STA. 10+00.00

-Y2- POT Sta. 9+00.00

-Y2DET- PG Sta. 15+00.00

MATCHLINE -Y2- STA. 17+00.00 SHEET U0-7

