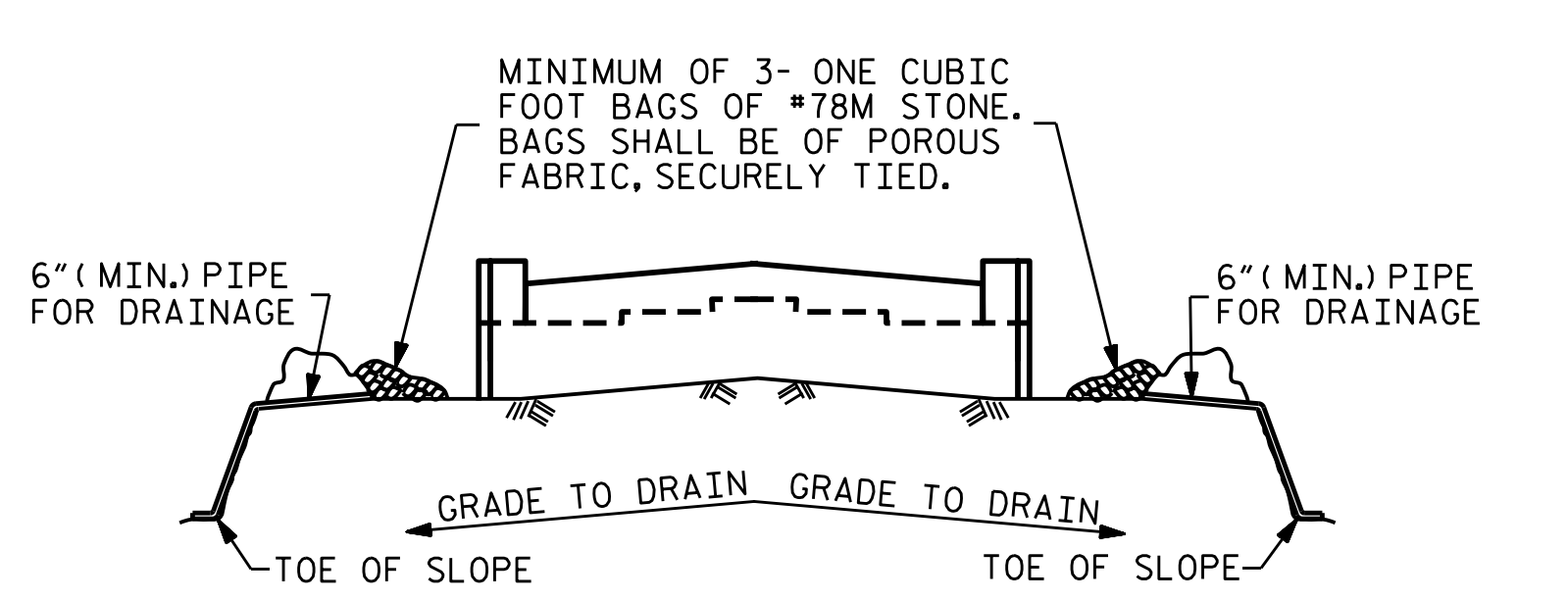


POSITION OF PILE DURING WELDING.  
**PILE SPLICE DETAILS**

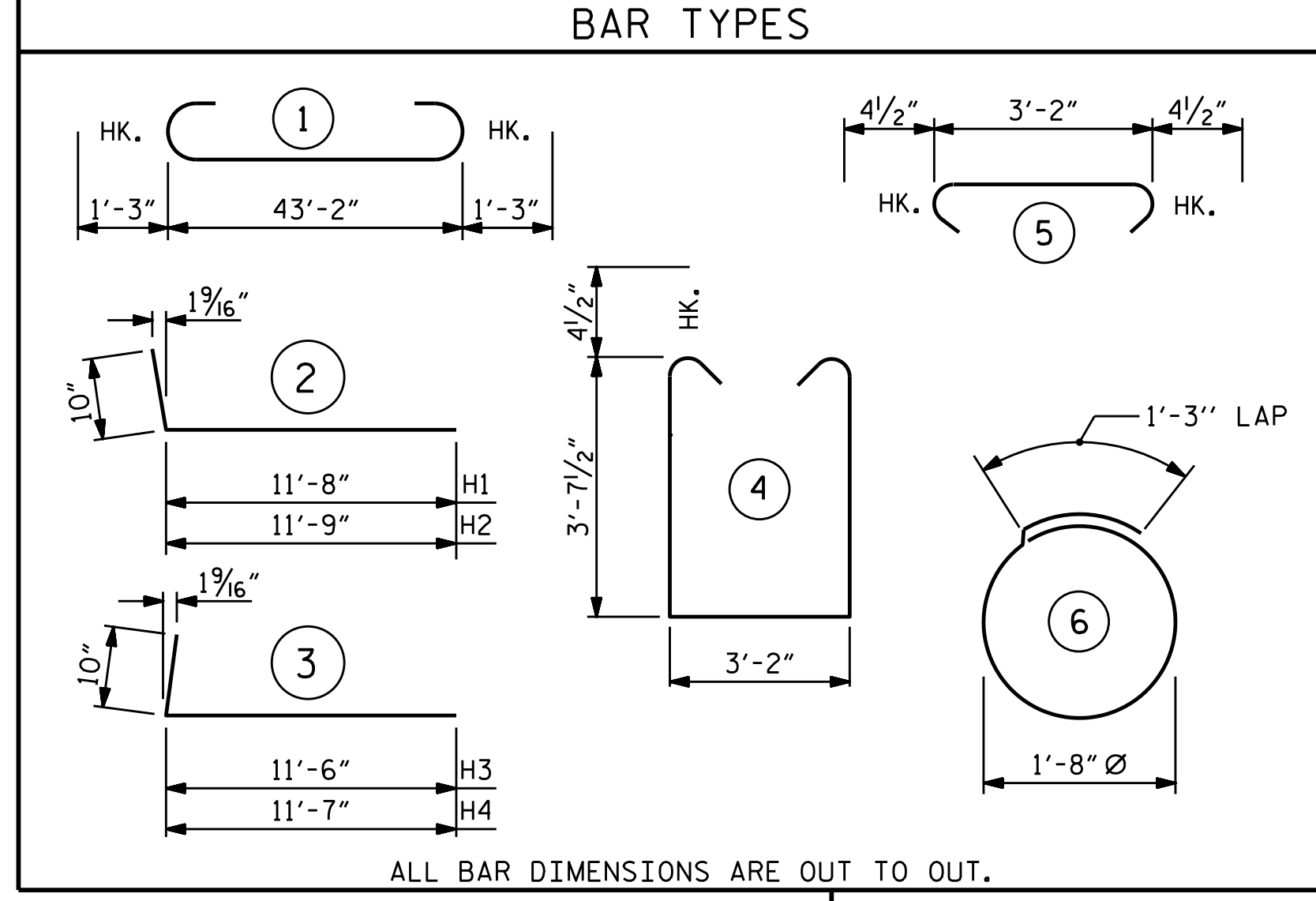


BAGGED STONE AND PIPE SHALL BE PLACED IMMEDIATELY AFTER COMPLETION OF END BENT EXCAVATION. PIPE MAY BE EITHER CONCRETE, CORRUGATED STEEL, CORRUGATED ALUMINUM ALLOY, OR CORRUGATED PLASTIC. PERFORATED PIPE WILL NOT BE ALLOWED.

BAGGED STONE SHALL REMAIN IN PLACE UNTIL THE ENGINEER DIRECTS THAT IT BE REMOVED. THE CONTRACTOR SHALL REMOVE AND DISPOSE OF SILT ACCUMULATIONS AT BAGGED STONE WHEN SO DIRECTED BY THE ENGINEER. BAGS SHALL BE REMOVED AND REPLACED WHENEVER THE ENGINEER DETERMINES THAT THEY HAVE DETERIORATED AND LOST THEIR EFFECTIVENESS.

NO SEPARATE PAYMENT WILL BE MADE FOR THIS WORK AND THE ENTIRE COST OF THIS WORK SHALL BE INCLUDED IN THE UNIT CONTRACT PRICE BID FOR THE SEVERAL PAY ITEMS.

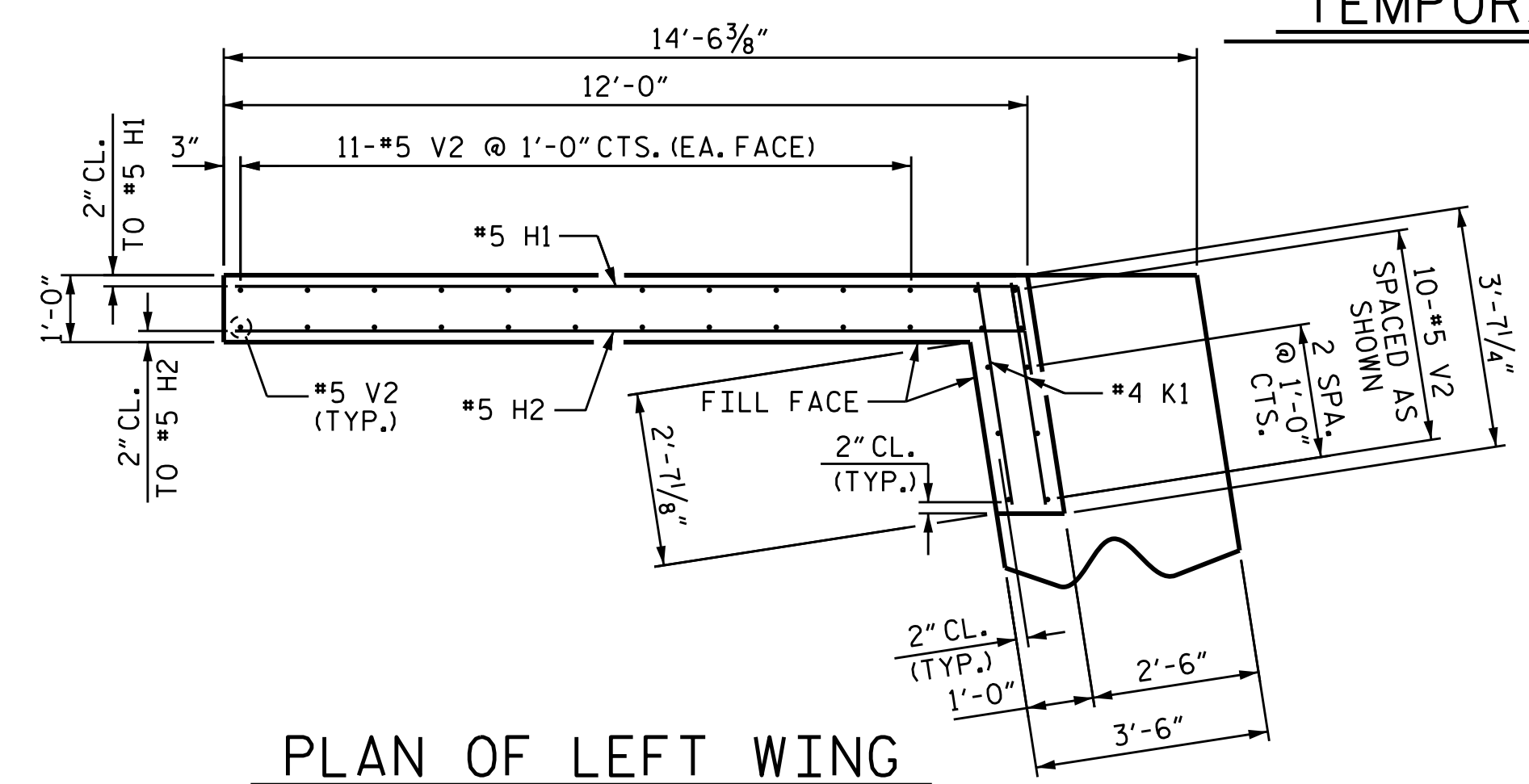
**TEMPORARY DRAINAGE AT END BENT**



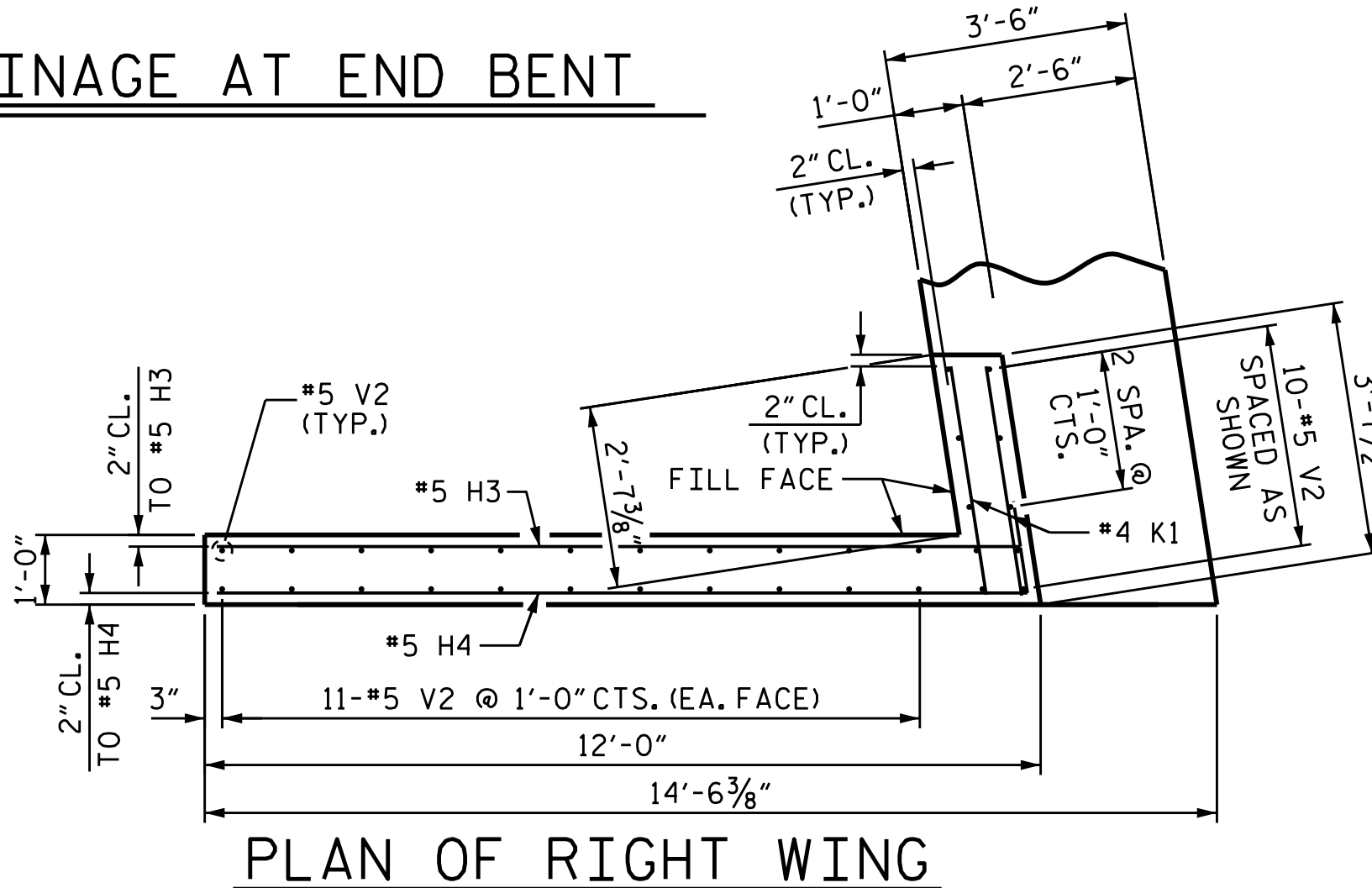
ALL BAR DIMENSIONS ARE OUT TO OUT.

PILE DRIVING EQUIPMENT SETUP FOR HP 12 X 53 STEEL PILES 8 EA.

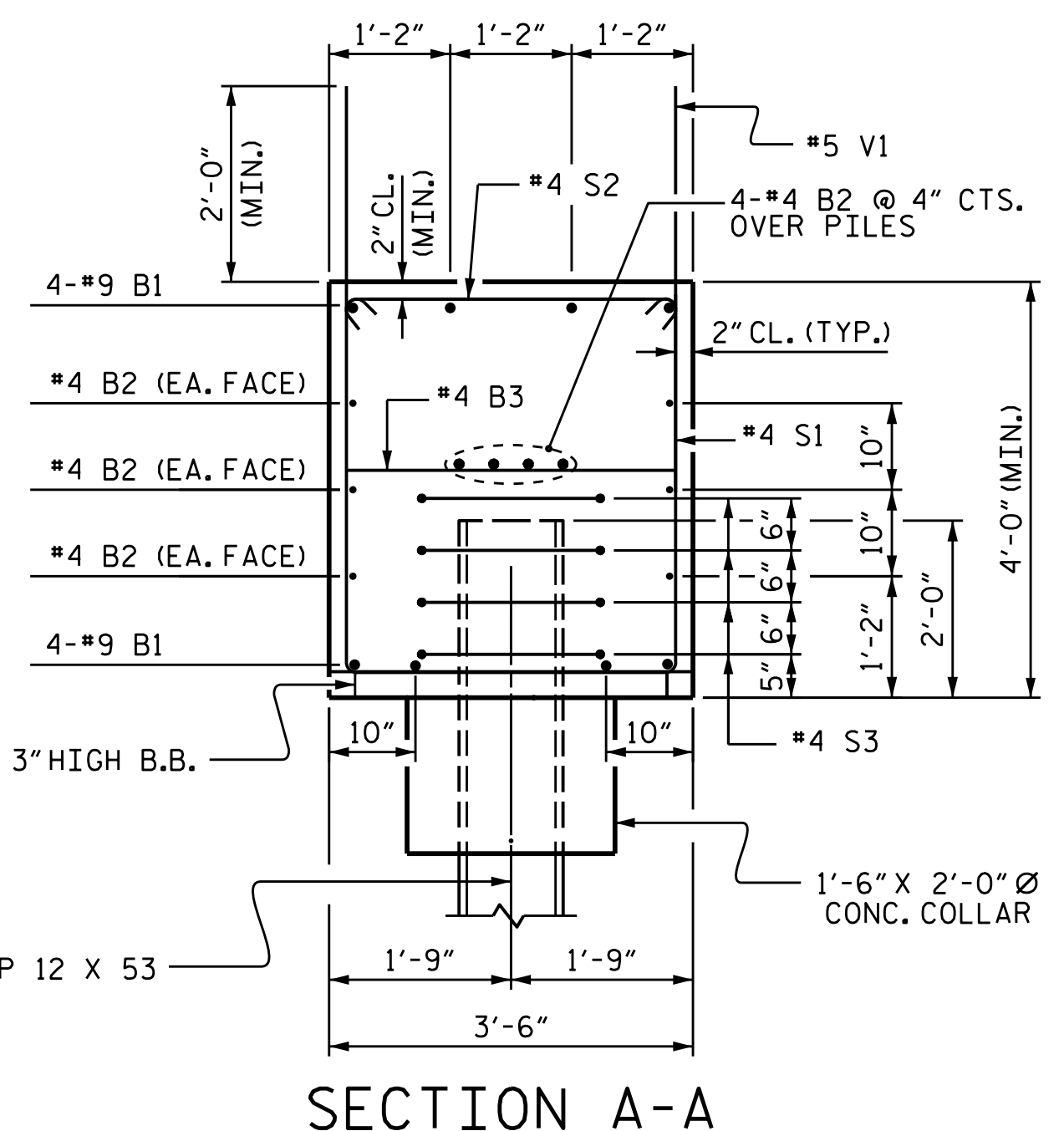
| BILL OF MATERIAL                            |     |      |      |         |              |
|---|-----|------|------|---------|--------------|
| END BENT 1                                  |     |      |      |         |              |
| BAR   | NO. | SIZE | TYPE | LENGTH  | WEIGHT       |
| B1  | 8   | #9   | 1    | 45'-8"  | 1242         |
| B2  | 20  | #4   | STR  | 22'-11" | 306          |
| B3  | 10  | #4   | STR  | 3'-2"   | 21           |
| H1  | 22  | #5   | 2    | 12'-6"  | 287          |
| H2  | 22  | #5   | 2    | 12'-7"  | 289          |
| H3  | 22  | #5   | 3    | 12'-4"  | 283          |
| H4  | 22  | #5   | 3    | 12'-5"  | 285          |
| K1  | 28  | #4   | STR  | 3'-3"   | 61           |
| S1  | 44  | #4   | 4    | 11'-2"  | 328          |
| S2  | 44  | #4   | 5    | 3'-11"  | 115          |
| S3  | 32  | #4   | 6    | 6'-6"   | 139          |
| V1  | 44  | #4   | STR  | 6'-3"   | 184          |
| V2  | 64  | #5   | STR  | 10'-9"  | 718          |
| REINFORCING STEEL                           |     |      |      | LBS.    | 4,258        |
| CLASS A CONCRETE                            |     |      |      |         |              |
| POUR #1 CAP, LOWER PART OF WINGS, & COLLARS |     |      |      | C.Y.    | 27.7         |
| POUR #2 UPPER PART OF WINGS                 |     |      |      | C.Y.    | 6.9          |
| TOTAL                                       |     |      |      | C.Y.    | 34.6         |
| HP 12 X 53 STEEL PILES                      |     |      |      | NO.: 8  | LIN. FT. 360 |



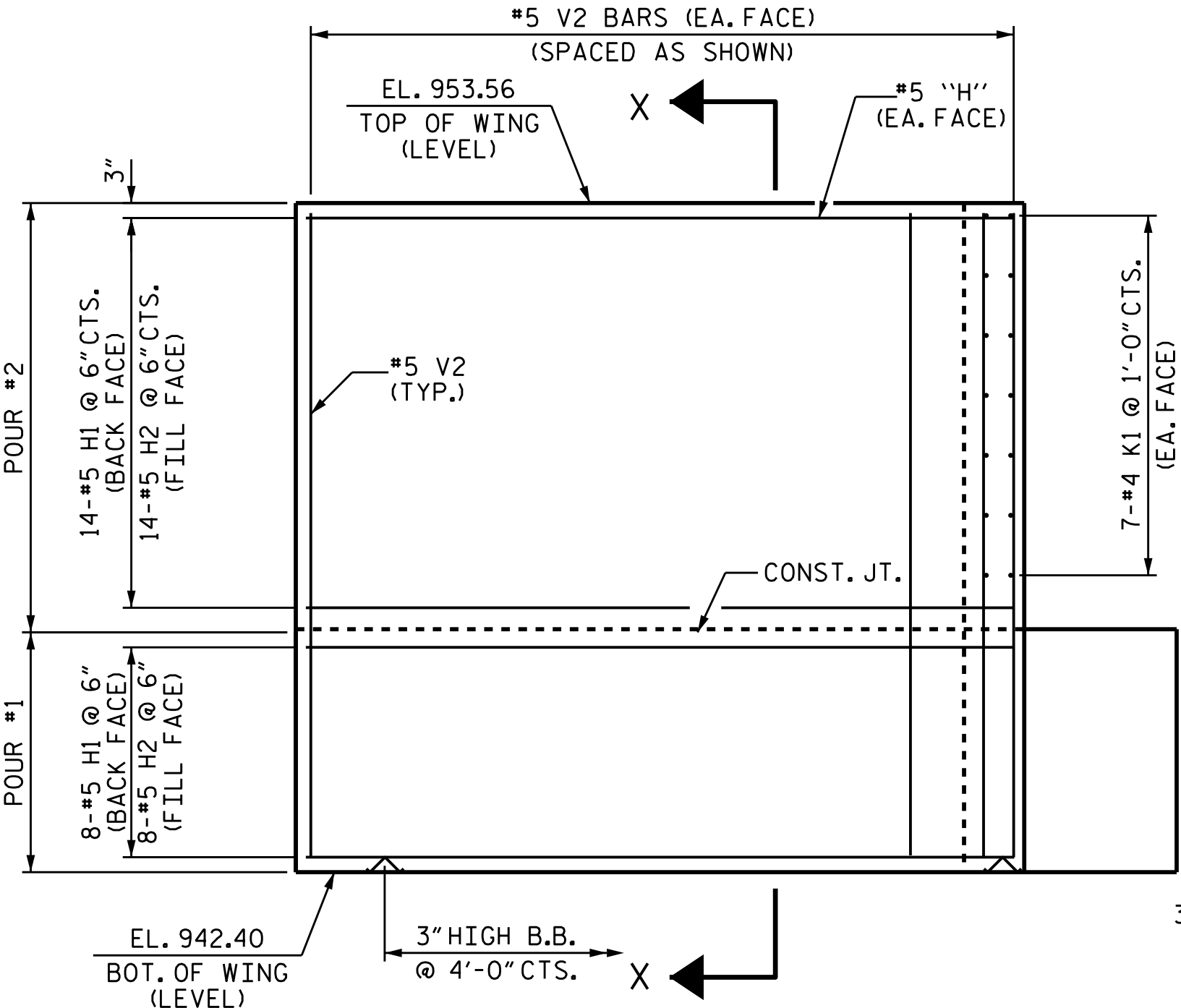
**PLAN OF LEFT WING**



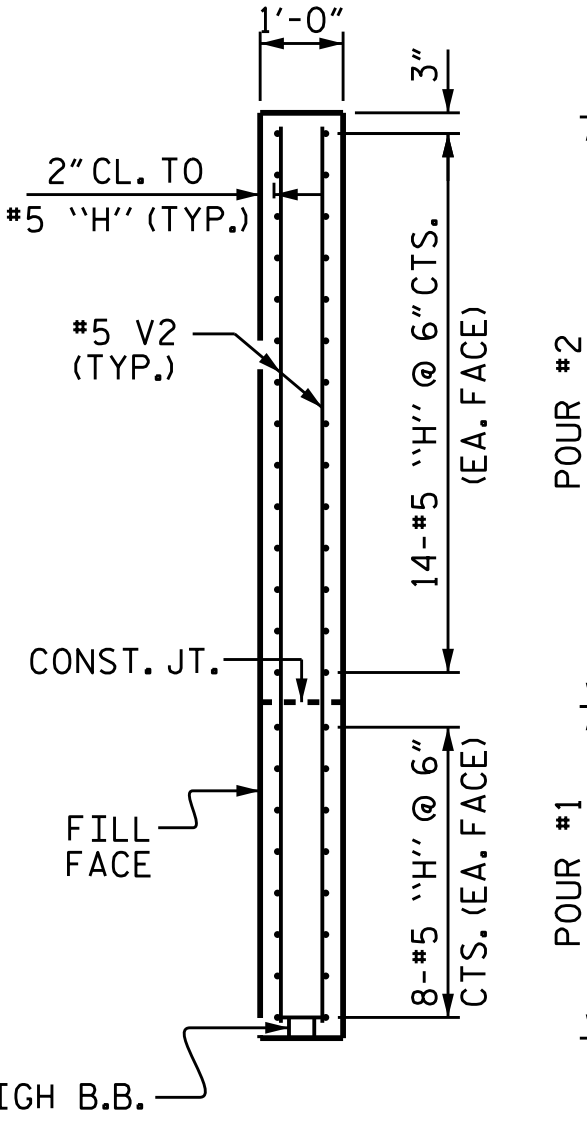
**PLAN OF RIGHT WING**



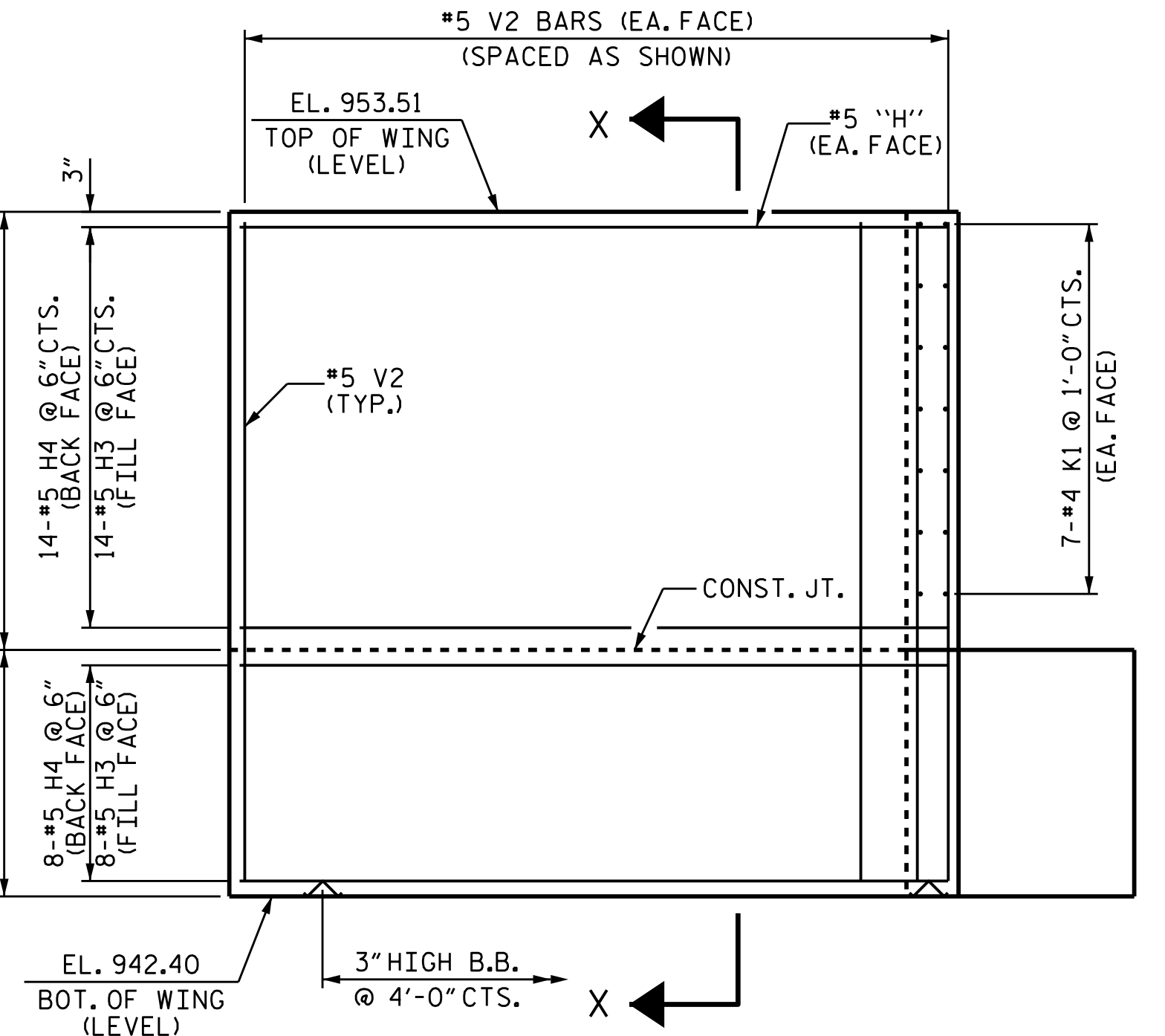
**SECTION A-A**



**ELEVATION OF LEFT WING**



**SECTION X-X**



**ELEVATION OF RIGHT WING**

PROJECT NO. U-2579C  
FORSYTH COUNTY  
 STATION: 21+27.27 -Y2-  
 SHEET 2 OF 2



STATE OF NORTH CAROLINA  
 DEPARTMENT OF TRANSPORTATION  
 RALEIGH  
 SUBSTRUCTURE  
 INTEGRAL  
 END BENT 1

DRAWN BY: J. K. BOWLES DATE: 5/10/16  
 CHECKED BY: K. D. LAYNE DATE: 7/21/16  
 DESIGN ENGINEER OF RECORD: J. K. BOWLES DATE: 7/21/16

DOCUMENT NOT CONSIDERED FINAL UNLESS ALL SIGNATURES COMPLETED

| REVISIONS |     |       |     |     |       | SHEET NO.    |
|-----------|-----|-------|-----|-----|-------|--------------|
| NO.       | BY: | DATE: | NO. | BY: | DATE: | S2-23        |
| 1         |     |       | 3   |     |       | TOTAL SHEETS |
| 2         |     |       | 4   |     |       | 30           |