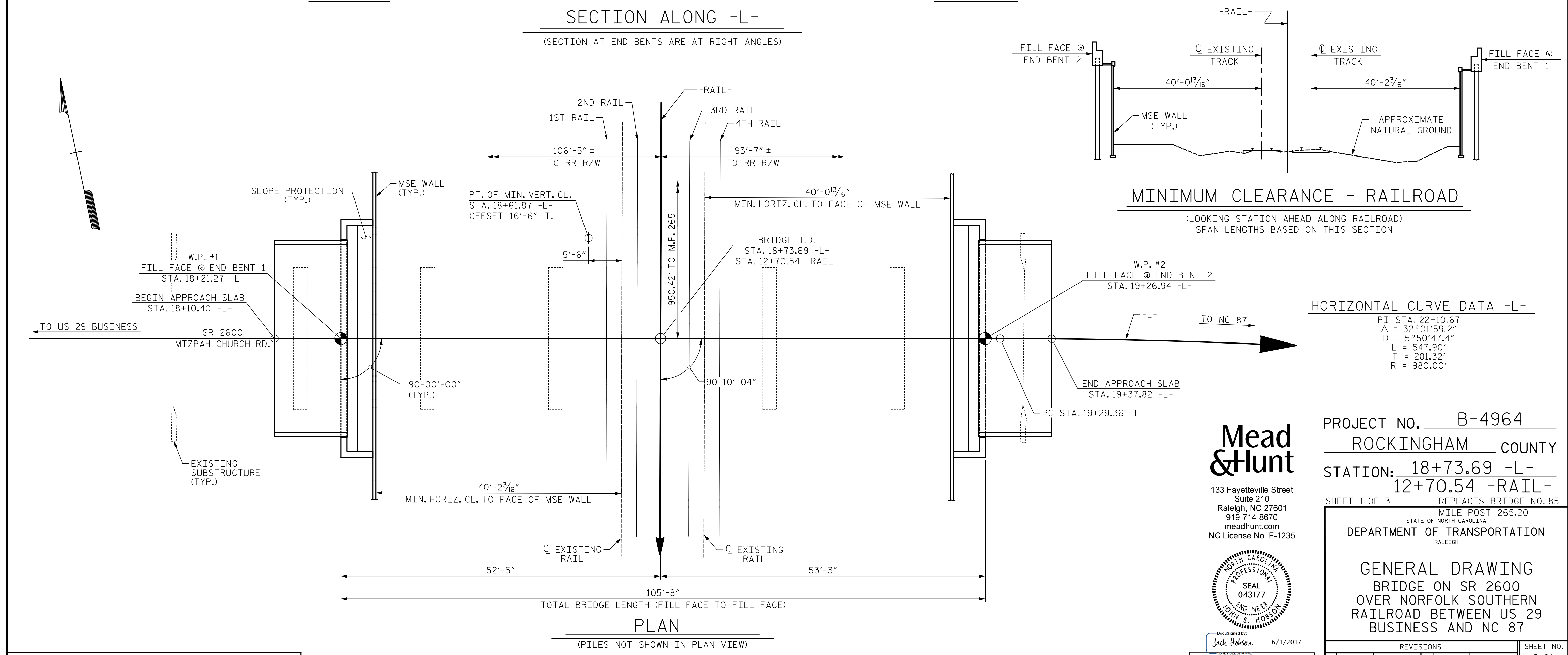


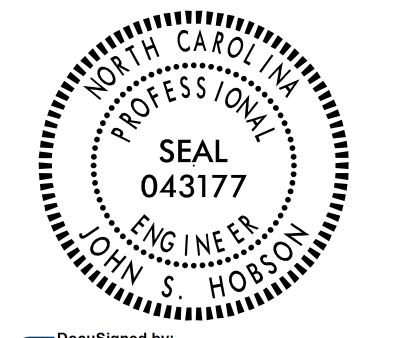
NOTE: TOP OF RAIL ELEVATIONS PROVIDED ARE PERPENDICULAR TO THE -RAIL- STATION GIVEN.



HORIZONTAL CURVE DATA -L-

PI STA.	22+10.67
Δ	32°01'59.2"
D	5°50'47.4"
L	547.90'
T	281.32'
R	980.00'

Mead & Hunt
 133 Fayetteville Street
 Suite 210
 Raleigh, NC 27601
 919-714-8670
 meadhunt.com
 NC License No. F-1235



PROJECT NO. B-4964
 ROCKINGHAM COUNTY
 STATION: 18+73.69 -L-
12+70.54 -RAIL-
 SHEET 1 OF 3 REPLACES BRIDGE NO. 85

MILE POST 265.20
 STATE OF NORTH CAROLINA
 DEPARTMENT OF TRANSPORTATION
 RALEIGH
GENERAL DRAWING
 BRIDGE ON SR 2600
 OVER NORFOLK SOUTHERN
 RAILROAD BETWEEN US 29
 BUSINESS AND NC 87

DRAWN BY : J.S. HOBSON DATE : 05/04/16
 CHECKED BY : J.A. LEE DATE : 05/11/16
 DESIGN ENGINEER OF RECORD : J.S. HOBSON DATE : 05/11/16

DOCUMENT NOT CONSIDERED
 FINAL UNLESS ALL
 SIGNATURES COMPLETED

REVISIONS				SHEET NO.
NO.	BY:	DATE:	NO.	DATE:
1			3	
2			4	

TOTAL SHEETS: 16