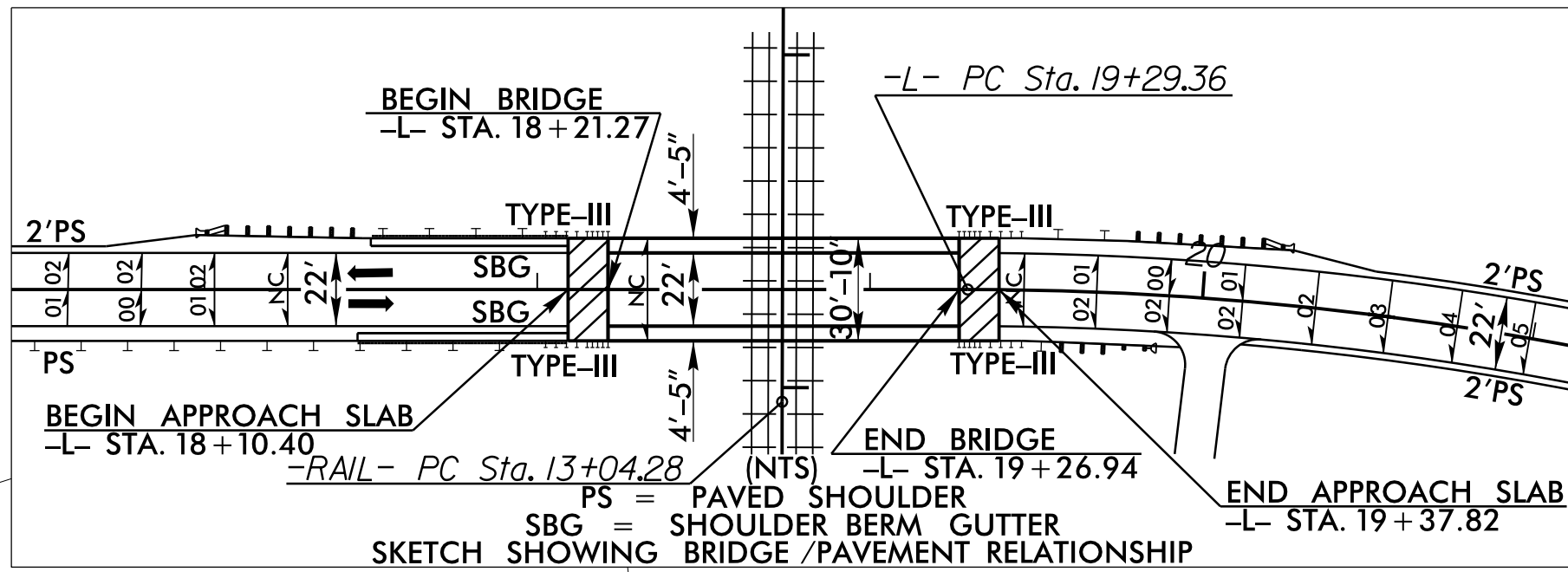
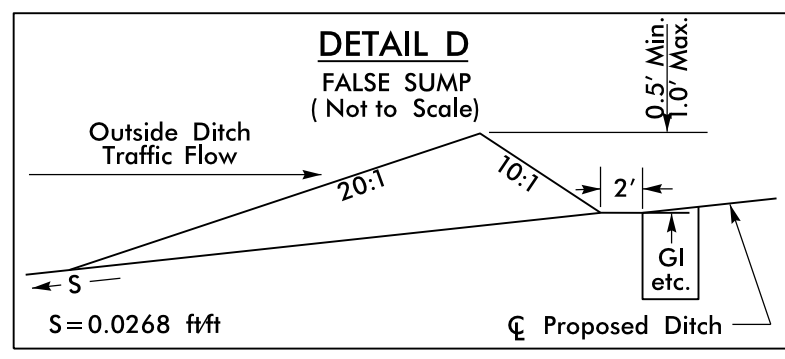
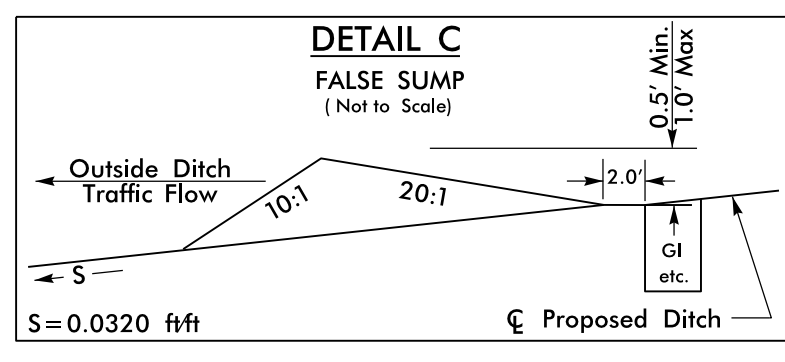
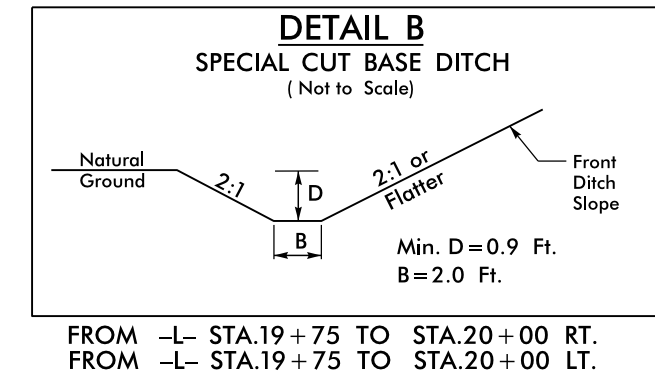
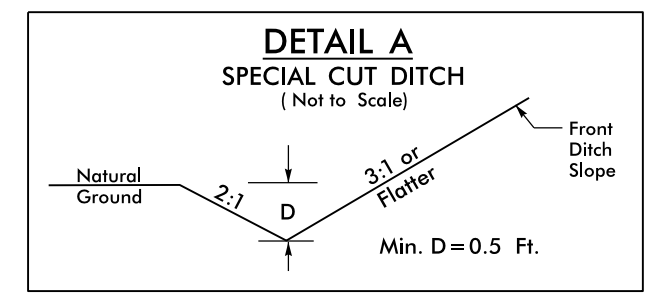
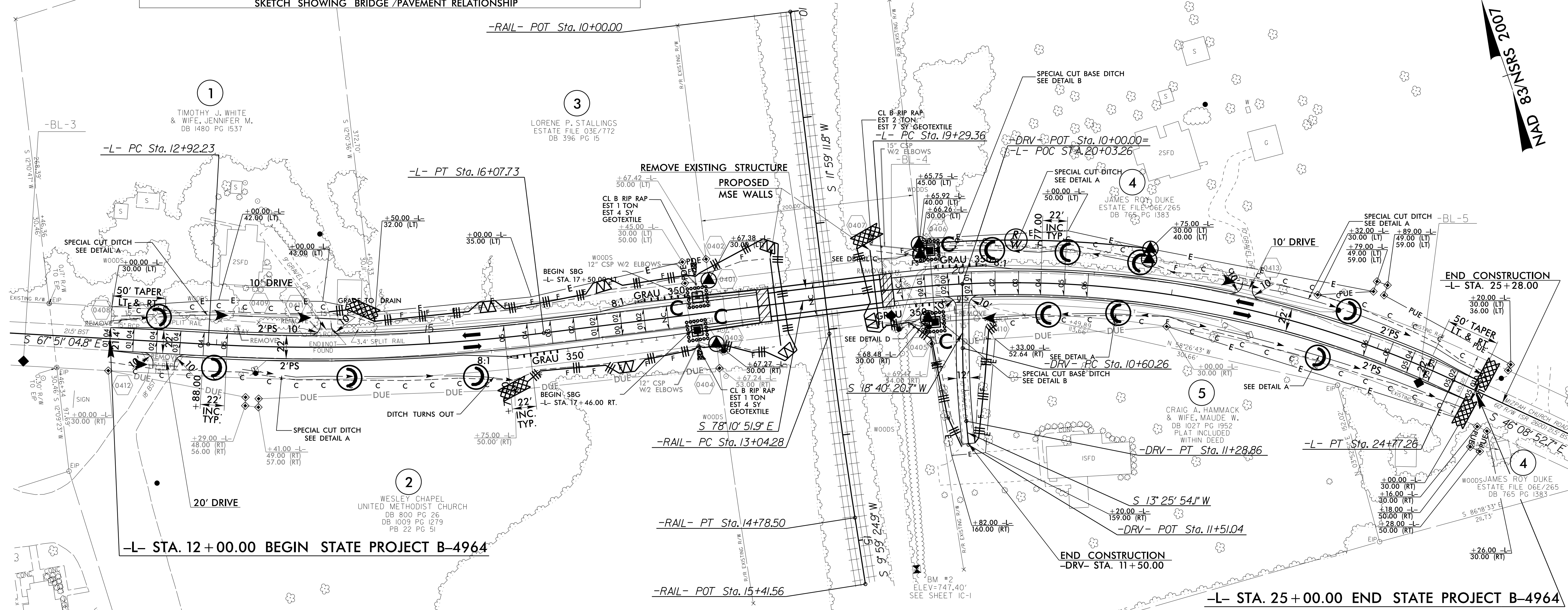


-L-	-DRV-	-RAIL-
PI Sta 14+50.41 $\Delta = 10' 19" 47.1" (LT)$ $D = 3' 16" 26.6"$ $L = 315.50'$ $T = 158.18'$ $R = 1,750.00'$ SE = SEE PLANS	PI Sta 22+10.67 $\Delta = 32' 01" 59.2" (RT)$ $D = 5' 50' 47.4"$ $L = 547.90'$ $T = 281.32'$ $R = 980.00'$ SE = SEE PLANS	PI Sta 10+94.58 $\Delta = 5' 14' 26.6" (LT)$ $D = 7' 38' 22.0"$ $L = 68.60'$ $T = 34.32'$ $R = 750.00'$ SE = SEE PLANS
		PI Sta 13+91.40 $\Delta = 1' 59' 46.9" (LT)$ $D = 1' 08' 45.3"$ $L = 174.22'$ $T = 87.12'$ $R = 5,000.00'$



100' 200' 300' 400' 500' 600' 700' 800' 900' 1000'



NOTE 1: TIE -DRV- TO EXISTING CROSS SLOPES.
NOTE 2: PAVE ALL DRIVES TO BACK OF TURNOUT RADIUS.
NOTE 3: SBG - SHOULDER BERM GUTTER
SEE SHEET 5 FOR -L- PROFILE
SEE SHEET 6 FOR -DRV- AND -RAIL- PROFILE
SEE SHEETS S-1 THRU S-3 FOR STRUCTURE PLANS