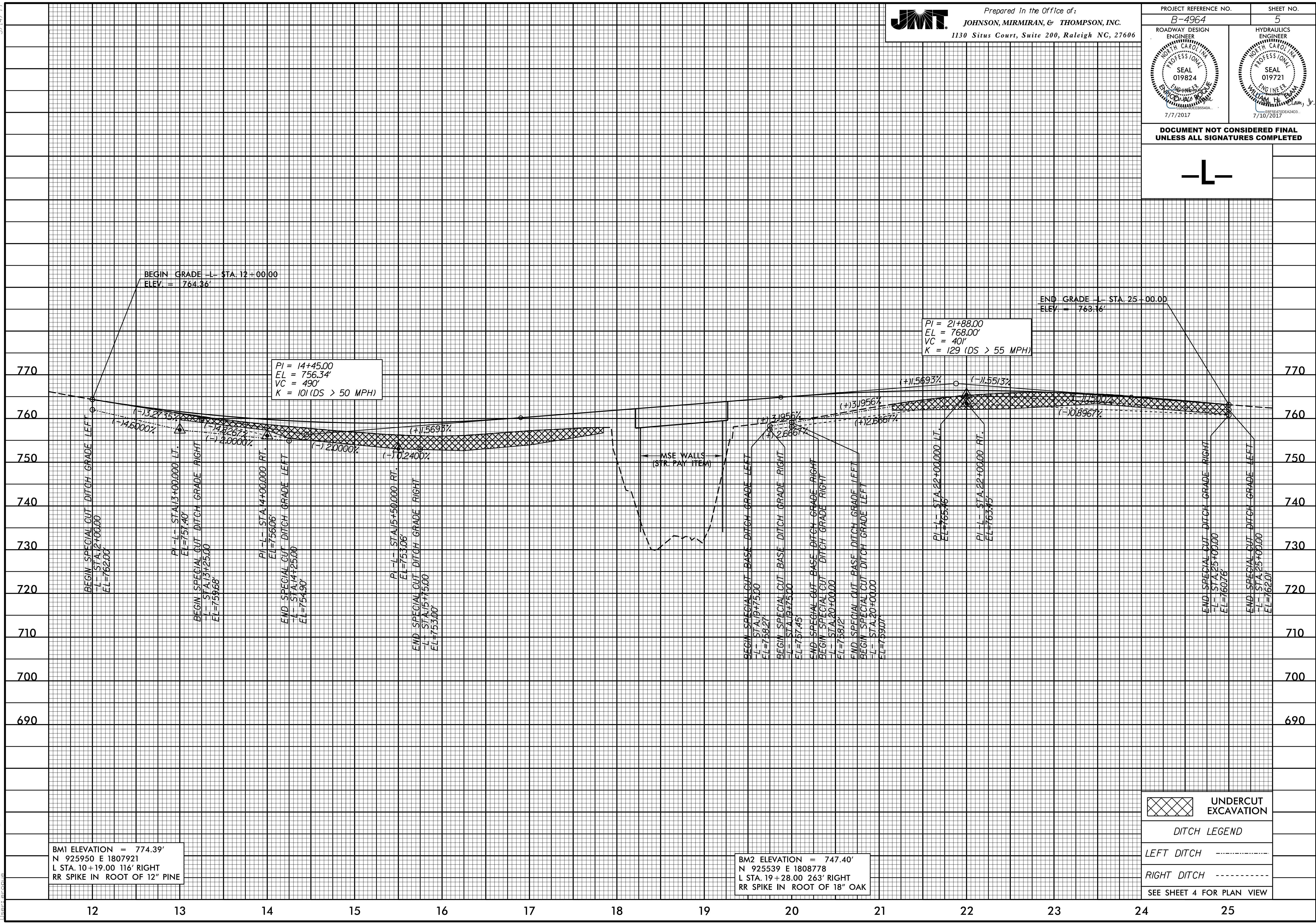
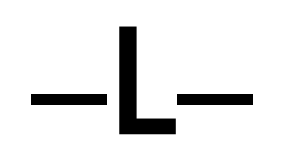


5/14/99

PROJECT REFERENCE NO. <b>B-4964</b>	SHEET NO. <b>5</b>
ROADWAY DESIGN ENGINEER WILLIAM H. THOMPSON SEAL 019824 7/7/2017	HYDRAULICS ENGINEER WILLIAM H. THOMPSON SEAL 019721 7/10/2017

**DOCUMENT NOT CONSIDERED FINAL  
 UNLESS ALL SIGNATURES COMPLETED**



BM1 ELEVATION = 774.39'  
 N 925950 E 1807921  
 L STA. 10+19.00 116' RIGHT  
 RR SPIKE IN ROOT OF 12" PINE

BM2 ELEVATION = 747.40'  
 N 925539 E 1808778  
 L STA. 19+28.00 263' RIGHT  
 RR SPIKE IN ROOT OF 18" OAK

UNDERCUT EXCAVATION

DITCH LEGEND

LEFT DITCH - - - - -

RIGHT DITCH - - - - -

SEE SHEET 4 FOR PLAN VIEW

7/5/2017  
 B-4964\_r.dwg  
 11:21:23 AM