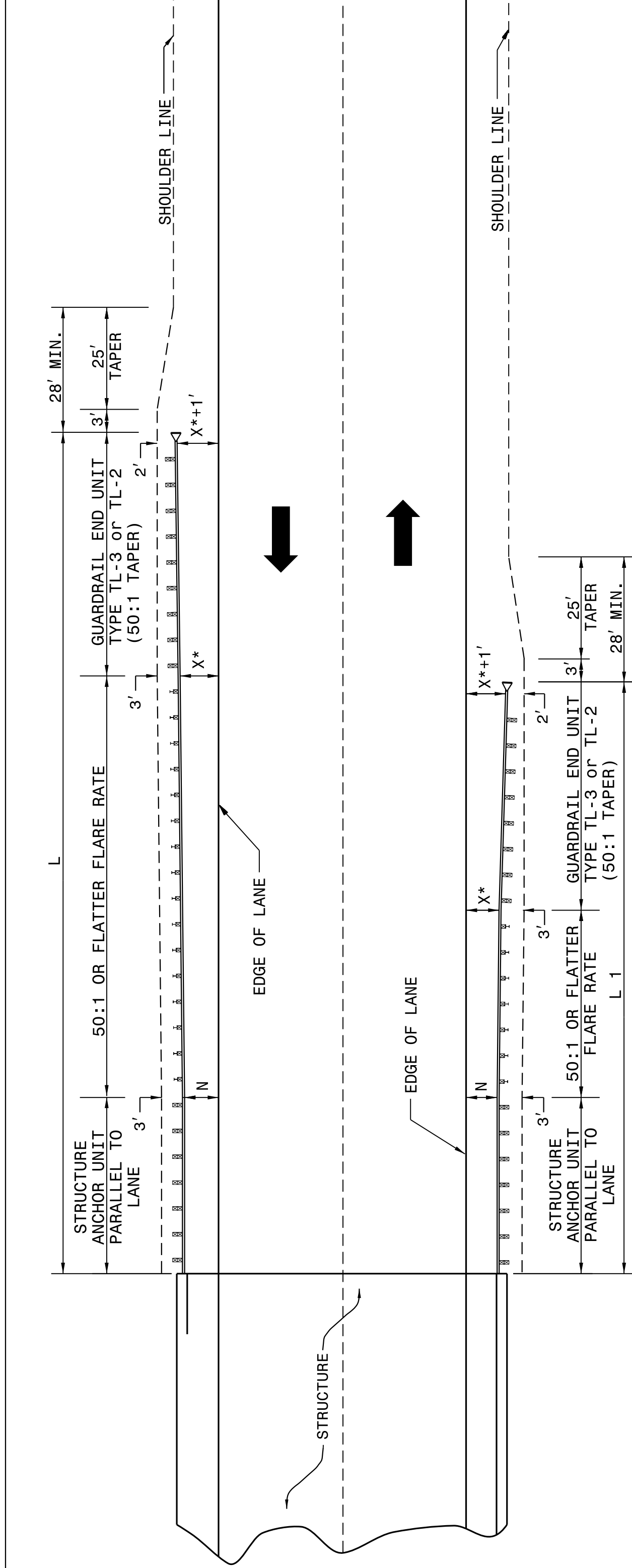


24-MAY-2017 09:05 S:\Contracts\Contract35\Special Details\Howerton\Standard Drawings\2012 Standard Drawings\Details in Lieu of Standards\Division 8\862d01 862d03 862d01.dgn  
 Howerton A:\CS0-292595

STATE OF  
 NORTH CAROLINA  
 DEPT. OF TRANSPORTATION  
 DIVISION OF HIGHWAYS  
 RALEIGH, N.C.

ROADWAY DETAIL DRAWING FOR  
**GUARDRAIL PLACEMENT**

SHEET 4 OF 11  
**862D01**



ROADWAY DETAIL DRAWING FOR  
**GUARDRAIL PLACEMENT**

SHEET 4 OF 11  
**862D01**

STATE OF  
 NORTH CAROLINA  
 DEPT. OF TRANSPORTATION  
 DIVISION OF HIGHWAYS  
 RALEIGH, N.C.

**GUARDRAIL INSTALLATION AT BRIDGE APPROACHES  
 FOR TWO-LANE, TWO-WAY TRAFFIC**

DESIGN SPEED (MPH)	"L" APPROACH LENGTH (FT.)		"L1" TRAILING LENGTH (FT.)	
	OVER 2000	1001-2000	DESIGN YEAR ADT OVER 2000	DESIGN YEAR ADT UNDER 2000
70	362.5'	362.5'	187.5'	175.0'
60	300.0'	287.5'	137.5'	100.0'
50	212.5'	200.0'	87.5'	75.0'
40	175.0'	137.5'	75.0'	75.0'
X*	8'	6'	4'	4'

\* USE FLARE RATE AS THE CONTROL IF THE "X" DISTANCE IS NOT OBTAINED. ("X" IS BASED ON SHOULDER WIDTHS IN THE HIGHWAY DESIGN BRANCH MANUAL, PART 1, 1-4B, F1).

"N" = DISTANCE FROM EDGE OF LANE TO FACE OF GUARDRAIL WHERE GUARDRAIL IS PARALLEL TO LANE.

SEE STD. 862.03 FOR STRUCTURE ANCHOR UNITS

FOR POSTED SPEEDS ≥ 45mph USE GREU TYPE TL-3

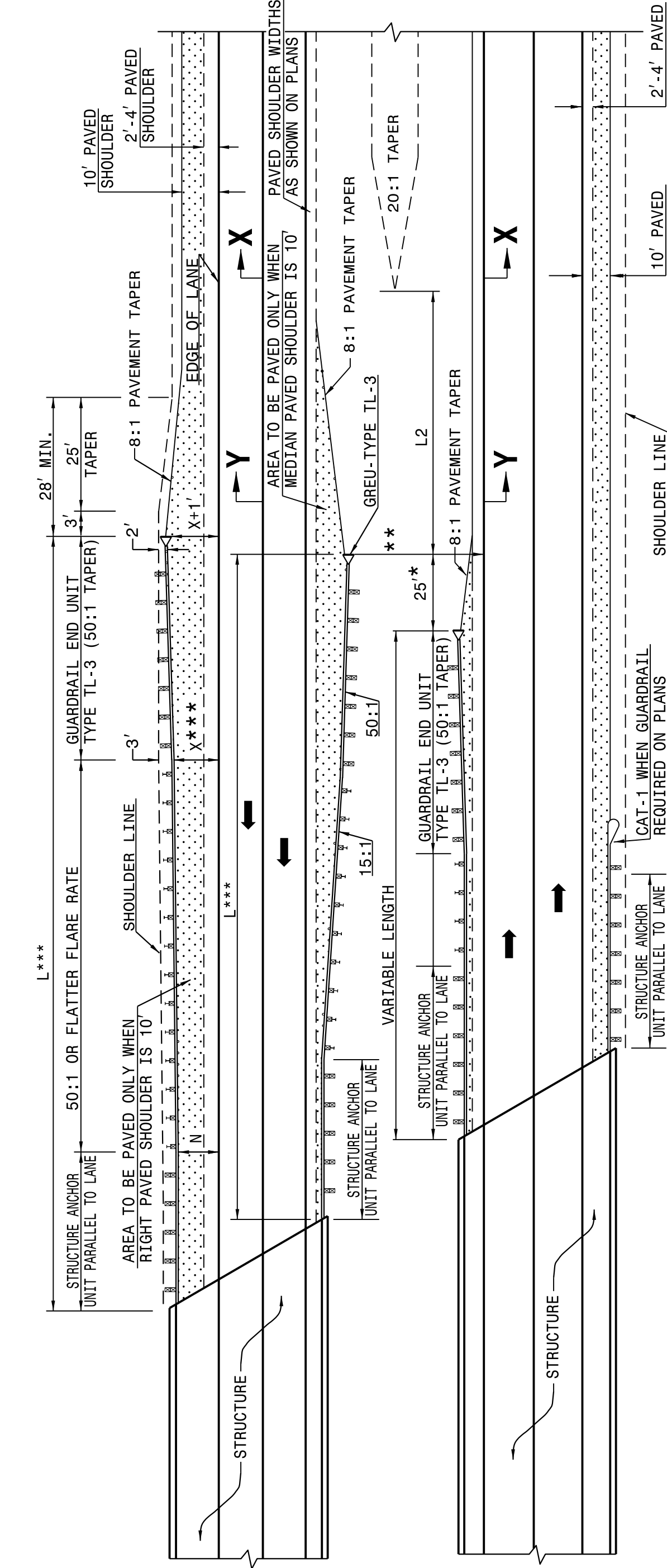
FOR POSTED SPEEDS < 45mph USE GREU TYPE TL-2

**LENGTHS AND OFFSETS FOR PROPOSED GUARDRAIL AT TWO LANE - TWO WAY LOCATIONS**

STATE OF  
 NORTH CAROLINA  
 DEPT. OF TRANSPORTATION  
 DIVISION OF HIGHWAYS  
 RALEIGH, N.C.

ROADWAY DETAIL DRAWING FOR  
**GUARDRAIL PLACEMENT**

SHEET 3 OF 11  
**862D01**



FOR POSTED SPEEDS ≥ 45mph USE GREU TYPE TL-3  
 FOR POSTED SPEEDS < 45mph USE GREU TYPE TL-2

**DIMENSIONS FOR LENGTH OF GUARDRAIL APPROACHING DUAL LANE BRIDGES**

MEDIAN WIDTH	-L-***		-L2-DIM.
	60 MPH	50 MPH	
30'	300.0'	150.0'	80.0'
36'	300.0'	150.0'	60.0'
40' & ABOVE	300.0'	150.0'	40.0'

NOTES: \* MINOR VARIATION TO THE 25'-0" DIMENSION IS PERMISSIBLE TO ACCOMMODATE THE 12'-6" IN GUARDRAIL LENGTHS.

\*\* NO GUARDRAIL IS REQUIRED ON THE TRAILING END WHEN THIS DISTANCE EXCEEDS CLEAR ROADSIDE RECOVERY AREA FOR THE APPROPRIATE DESIGN SPEED.

\*\*\* BASED ON "X" OF 12' USE FLARE RATE AS THE CONTROL IF THE "X" DISTANCE IS NOT OBTAINED. ("X" IS BASED ON SHOULDER WIDTHS IN THE HIGHWAY DESIGN BRANCH MANUAL, PART 1, 1-4B, F1A).

"N" = DISTANCE FROM EDGE OF LANE TO FACE OF GUARDRAIL WHERE GUARDRAIL IS PARALLEL TO LANE. THE DESIGN LAYOUT FOR LENGTHS SHOWN ON THIS STANDARD ARE MINIMUM DESIGN LENGTHS.

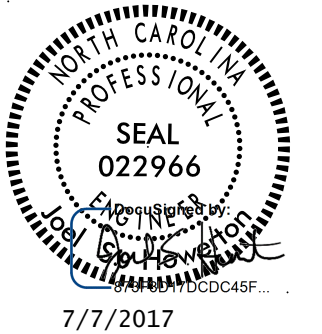
SEE SHEET 1 OF 12 FOR SECTIONS XX, YY  
 SEE STD. 862.03 FOR STRUCTURE ANCHOR UNITS

**DETAIL OF GUARDRAIL APPROACHING DUAL LANE BRIDGES**

CONTRACT STANDARDS  
 AND DEVELOPMENT UNIT  
 Office 919-707-6950 FAX 919-250-4119

**SEE TITLE BLOCK**

ORIGINAL BY: J. HOWERTON DATE: 06-22-12  
 MODIFIED BY: DATE:  
 CHECKED BY: DATE:  
 FILE SPEC.: DATE:



DOCUMENT NOT CONSIDERED FINAL  
 UNLESS ALL SIGNATURES COMPLETED