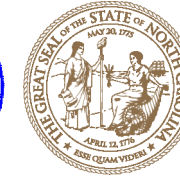


**This electronic collection of documents is provided
for the convenience of the user
and is Not a Certified Document –**

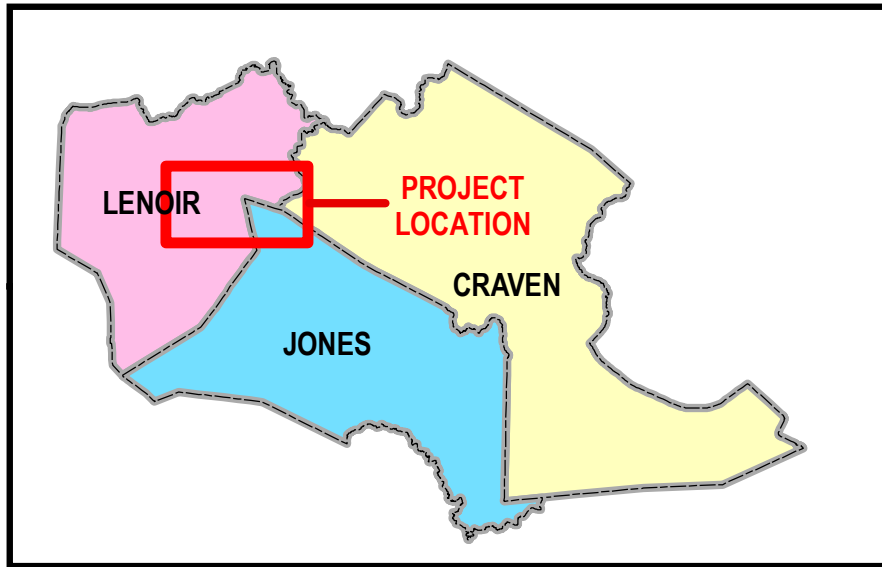
**The documents contained herein were originally issued
and sealed by the individuals whose names and license
numbers appear on each page, on the dates appearing
with their signature on that page.**

**This file or an individual page
shall not be considered a certified document.**

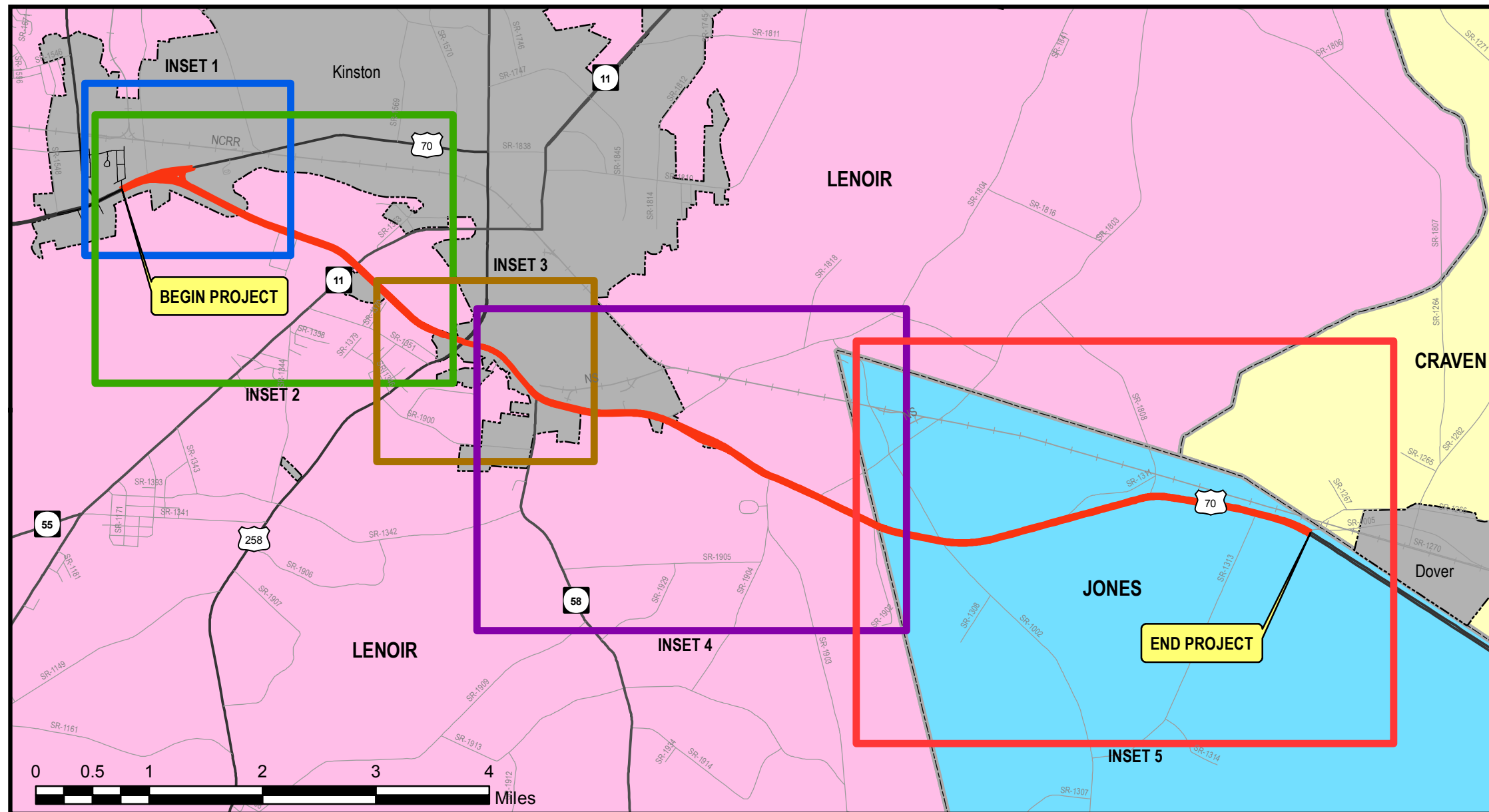
US 70 RESURFACING - PROJECT 1 JONES & LENOIR COUNTIES MAPS 1 - 11 (SHEET 1 OF 2)



PROJECT REFERENCE NO.	SHEET NO.
2017CPT.02.16.10521.1	1
2017CPT.02.17.10541.1	



WBS ELEMENTS:
JONES: 2017CPT.02.16.10521.1
LENOIR: 2017CPT.02.17.10541.1



LEGEND

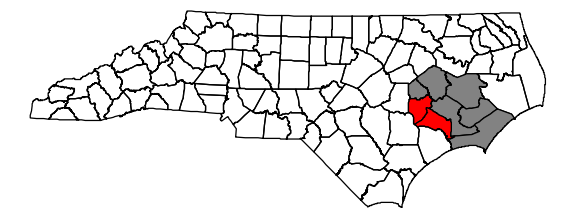
NCDOT ROADS

ROUTE TYPES

- US
- NC
- SR
- ▭ MUNICIPAL BOUNDARIES
- NC RAILROADS
- US 70 RESURFACING

NC COUNTIES

- ▭ CRAVEN
- ▭ JONES
- ▭ LENOIR

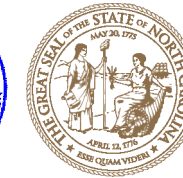


JONES & LENOIR COUNTIES

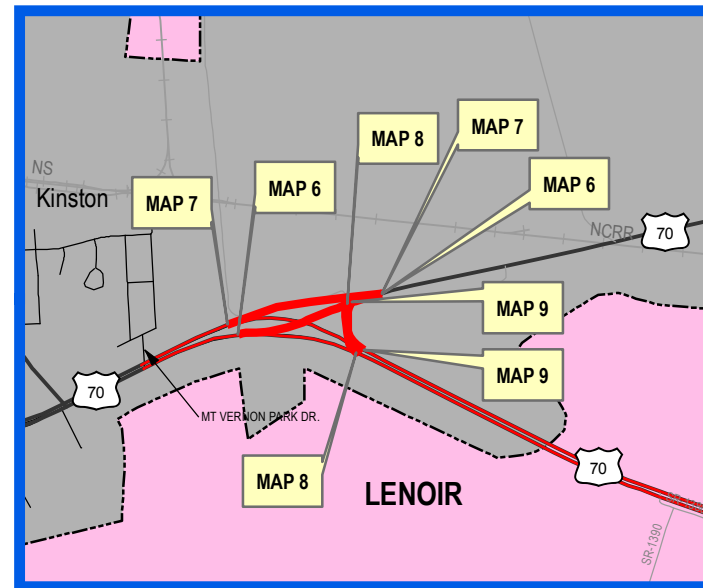
PREPARED BY THE
 NORTH CAROLINA DEPARTMENT OF TRANSPORTATION
 DIVISION OF HIGHWAYS
 DIVISION 2 MAINTENANCE OPERATIONS SUPPORT
 2815 ROUSE RD. EXTENSION.; KINSTON, NC 28504

WBS ELEMENTS:
 JONES: 2017CPT.02.16.10521.1
 LENOIR: 2017CPT.02.17.10541.1

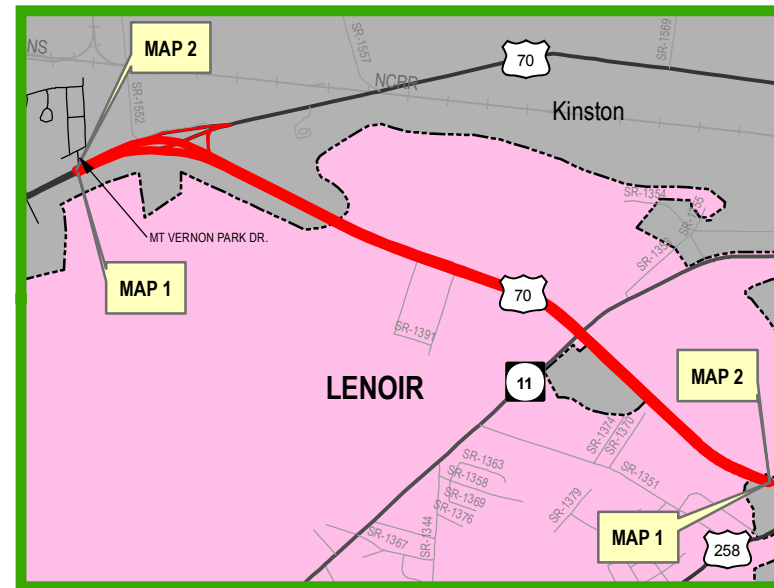
US 70 RESURFACING - PROJECT 1 JONES & LENOIR COUNTIES MAPS 1 - 11 (SHEET 2 OF 2)



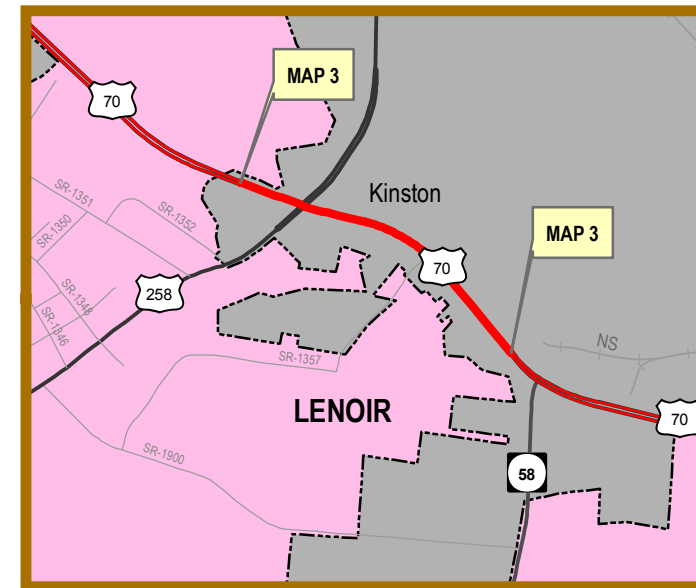
PROJECT REFERENCE NO.	SHEET NO.
2017CPT.02.16.10521.1	2
2017CPT.02.17.10541.1	



INSET 1



INSET 2



INSET 3

LEGEND

NCDOT ROADS

ROUTE TYPES

- US
- NC
- SR

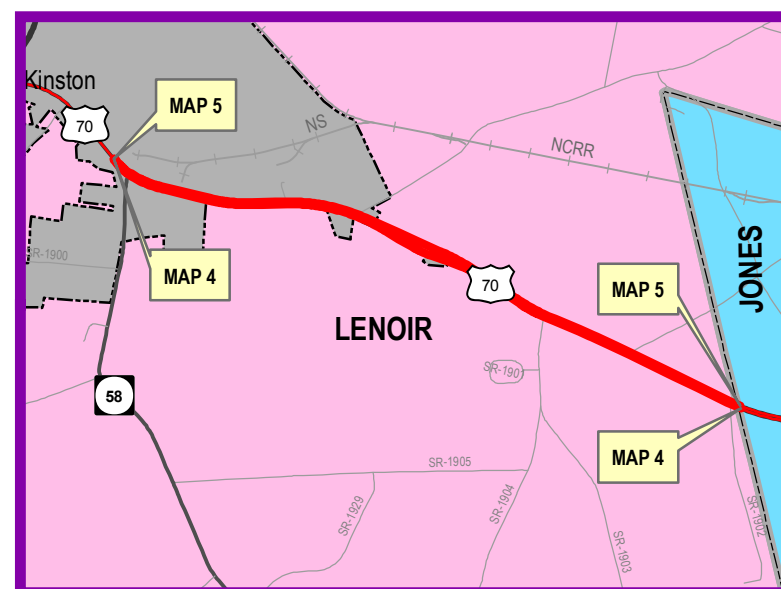
— MUNICIPAL BOUNDARIES

— US 70 RESURFACING

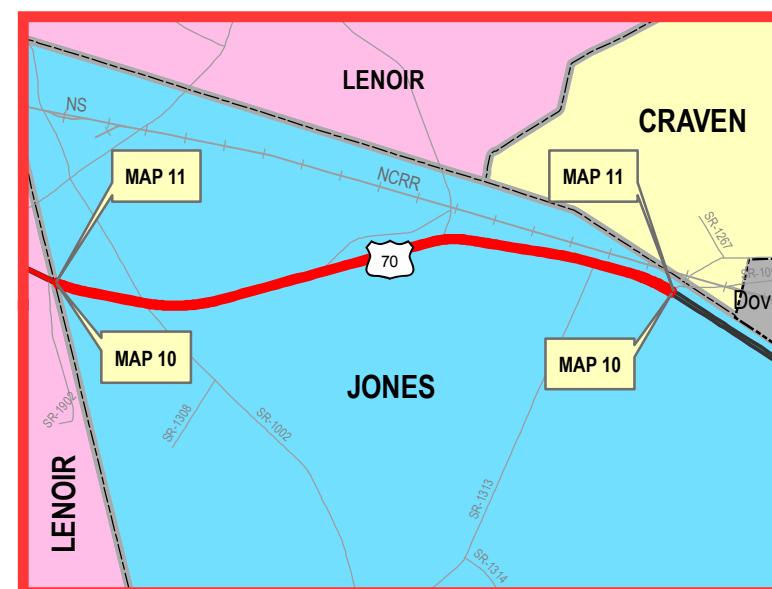
— NC RAILROADS

NC COUNTIES

- CRAVEN
- JONES
- LENOIR



INSET 4



INSET 5

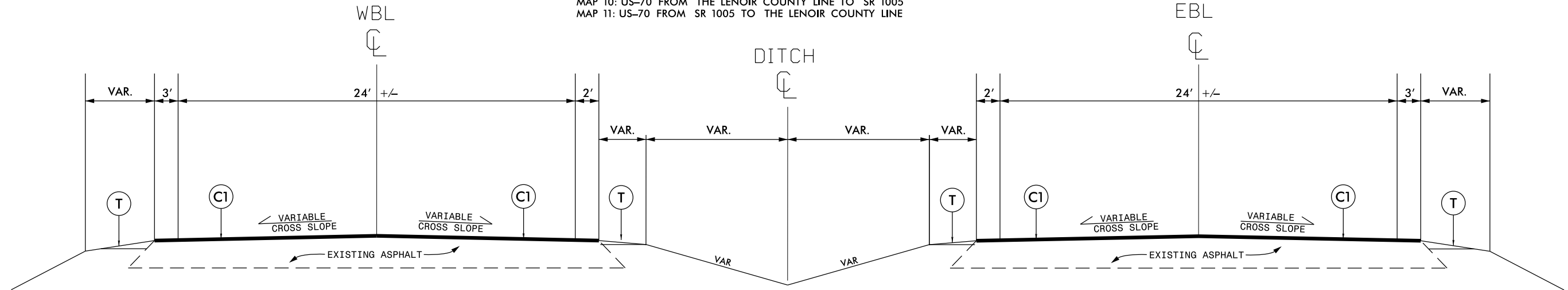


JONES & LENOIR COUNTIES

PREPARED BY THE
 NORTH CAROLINA DEPARTMENT OF TRANSPORTATION
 DIVISION OF HIGHWAYS
 DIVISION 2 MAINTENANCE OPERATIONS SUPPORT
 2815 ROUSE RD. EXTENSION., KINSTON, NC 28504

TYPICAL SECTION NO. 1

MAP 1: US-70 FROM MT VERNON PARK ROAD TO THE 5 LANE SECTION OF US-70
 MAP 2: US-70 FROM THE 5 LANE SECTION OF US-70 TO MT VERNON PARK ROAD
 MAP 4: US-70 FROM THE 5 LANE SECTION OF US-70 TO THE JONES COUNTY LINE
 MAP 5: US-70 FROM THE JONES COUNTY LINE TO COBB ROAD (SR-1903) **MAP SPLIT BETWEEN TYPICAL SECTION #1 & #5
 MAP 10: US-70 FROM THE LENOIR COUNTY LINE TO SR 1005
 MAP 11: US-70 FROM SR 1005 TO THE LENOIR COUNTY LINE

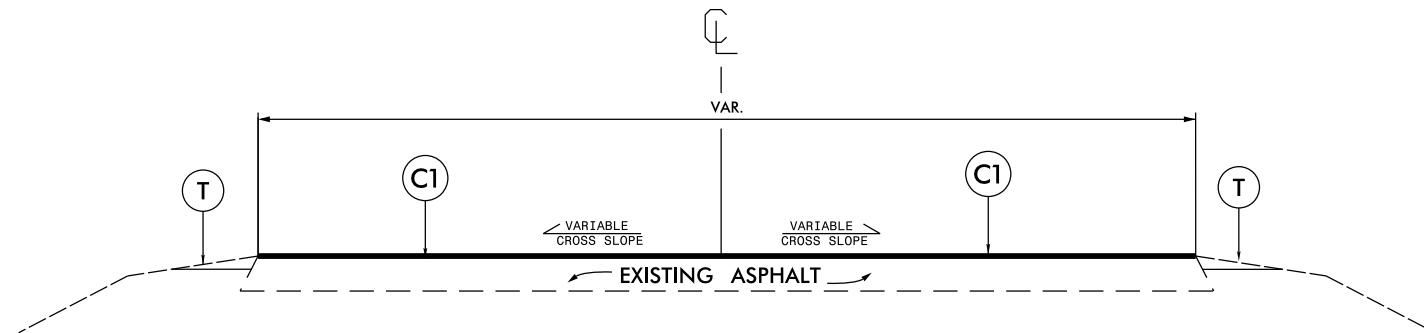


NOTE:

1. PLACE ASPHALT SURFACE COURSE AT FULL WIDTH OF EXISTING ASPHALT PAVEMENT, AS DIRECTED BY THE ENGINEER.
2. PERFORM SHOULDER RECONSTRUCTION AFTER PLACEMENT OF ASPHALT PAVEMENT, AS DIRECTED BY THE ENGINEER.
3. INCLUDES INCIDENTAL MILLING AT THE ENDS OF MAIN LINE SECTIONS AND BRIDGE APPROACH TIE-INS, OR AS DIRECTED BY THE ENGINEER. SEE DETAIL 1 & 2

TYPICAL SECTION NO. 2

MAP 6: US-70 RAMP
 MAP 8: US-70 RAMP #708
 MAP 9: US-70 RAMP #710



NOTE:

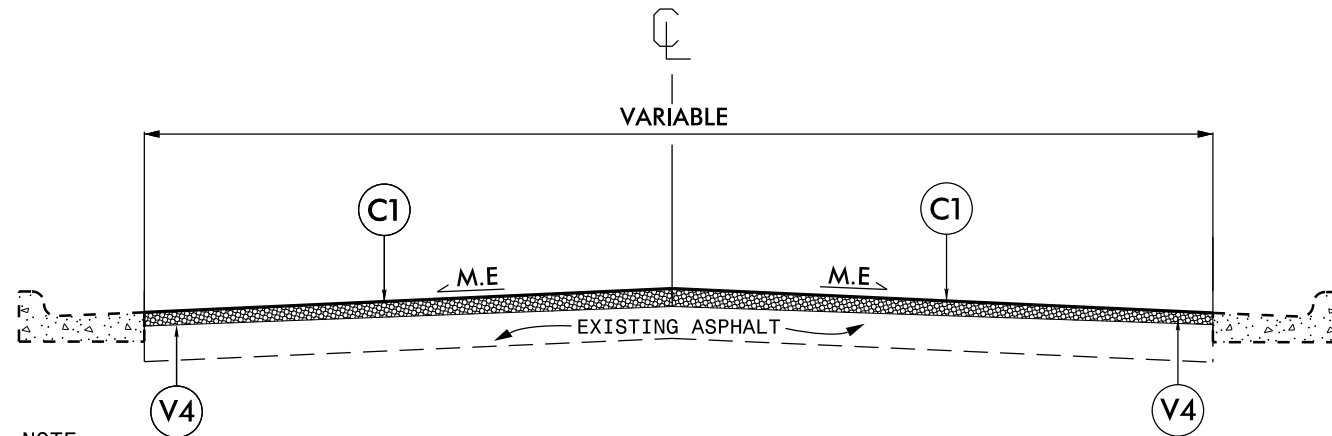
1. PLACE ASPHALT SURFACE COURSE AT FULL WIDTH OF EXISTING ASPHALT PAVEMENT, AS DIRECTED BY THE ENGINEER.
2. PERFORM SHOULDER RECONSTRUCTION AFTER PLACEMENT OF ASPHALT PAVEMENT, AS DIRECTED BY THE ENGINEER.
3. INCLUDES INCIDENTAL MILLING AT THE ENDS OF MAIN LINE SECTIONS AND BRIDGE APPROACH TIE-INS, OR AS DIRECTED BY THE ENGINEER. SEE DETAIL 1 & 2

PAVEMENT SCHEDULE

C1	PROP. APPROX. 3" ASPHALT CONCRETE SURFACE COURSE, TYPE S9.5C, IN (2) TWO LAYERS AT AN AVERAGE RATE OF 168 LBS. PER SQ. YD. PER LAYER
C2	PROP. APPROX. 1½" ASPHALT CONCRETE SURFACE COURSE, TYPE S9.5C, AT AN AVERAGE RATE OF 168 LBS. PER SQ. YD.
D1	PROP. APPROX. 2½" ASPHALT CONCRETE INTERMEDIATE COURSE, TYPE I 19.0C, AT AN AVERAGE RATE OF 285 LBS. PER SQ. YD.
V1	INCIDENTAL MILLING
V2	2½" DEPTH MILLING
V3	0" - 1 ½" DEPTH MILLING IN 7 FT
V4	3" DEPTH MILLING
T	SHOULDER RECONSTRUCTION
DRAWINGS NOT TO SCALE	

TYPICAL SECTION NO. 3

MAP 3: US-70 FROM BEGIN 5 LANE SECTION TO NC-58

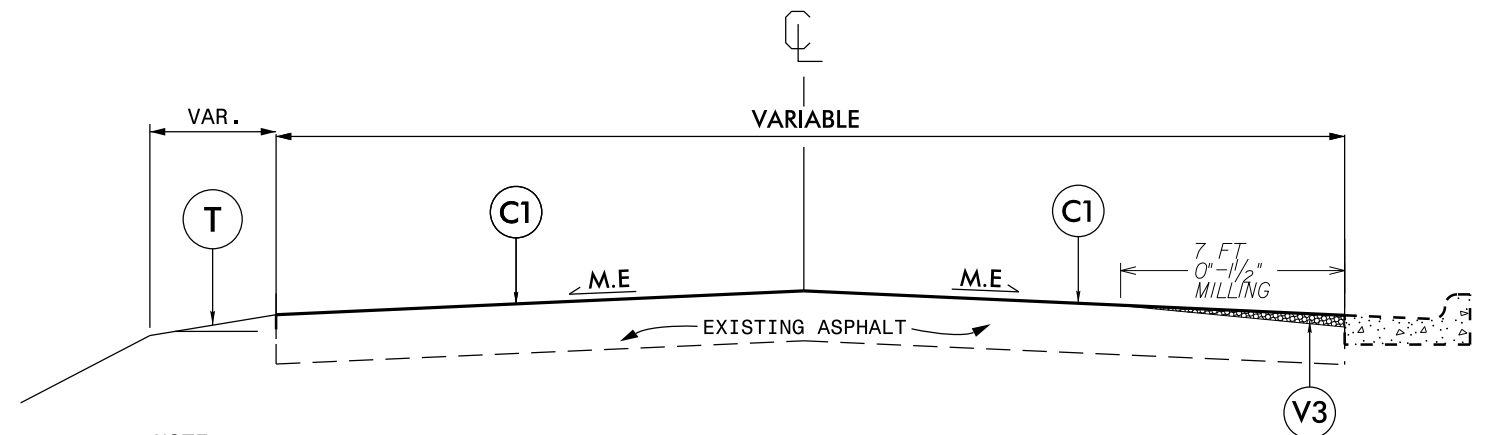


NOTE:

1. MILL ASPHALT PAVEMENT THREE (3) INCHES FROM SHOULDER/CURB TO SHOULDER/CURB.
2. PLACE ASPHALT SURFACE COURSE AT FULL WIDTH OF EXISTING ASPHALT PAVEMENT, OR AS DIRECTED BY THE ENGINEER.

TYPICAL SECTION NO. 4

MAP 7: US-70 RAMP FROM VERNON AVENUE TO US-70 WEST

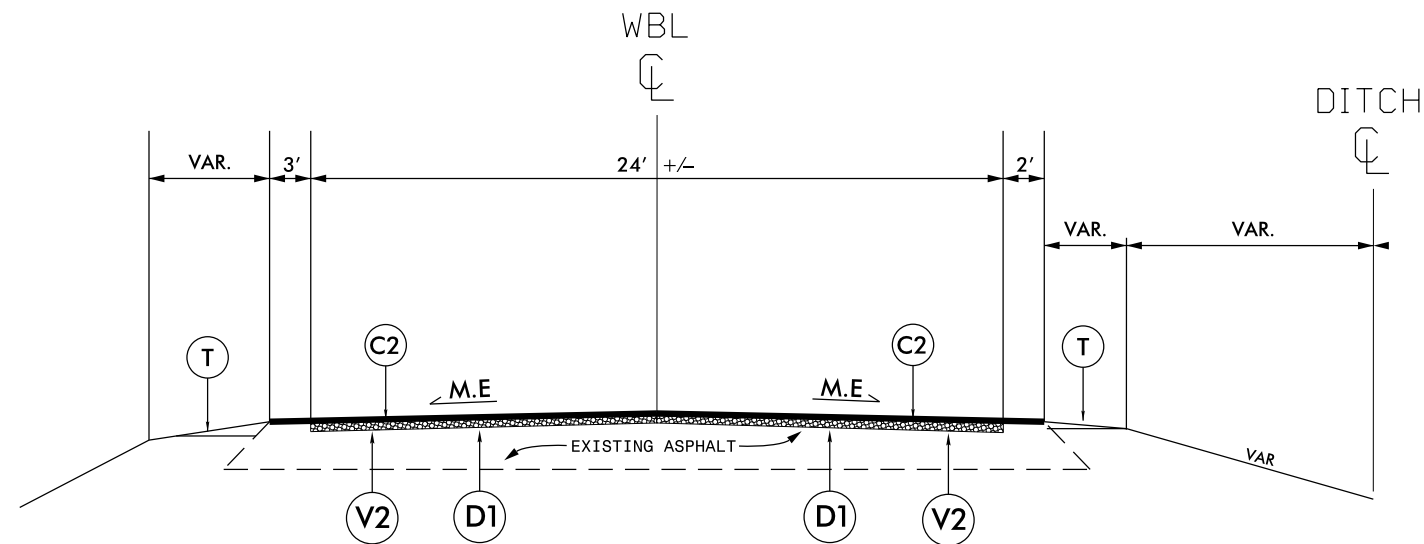


NOTE:

1. MILL ASPHALT PAVEMENT TO A DEPTH OF 0"-1 1/2" WITHIN 7FT TO TIE TO EXISTING C&G.
2. PLACE ASPHALT SURFACE COURSE AT FULL WIDTH OF EXISTING ASPHALT PAVEMENT, OR AS DIRECTED BY THE ENGINEER.

TYPICAL SECTION NO. 5

MAP 5: US-70 FROM COBB ROAD (SR-1903) TO END 5 LANE SECTION AT NC-58 **MAP SPLIT BETWEEN TYPICAL SECTION #1 & #5



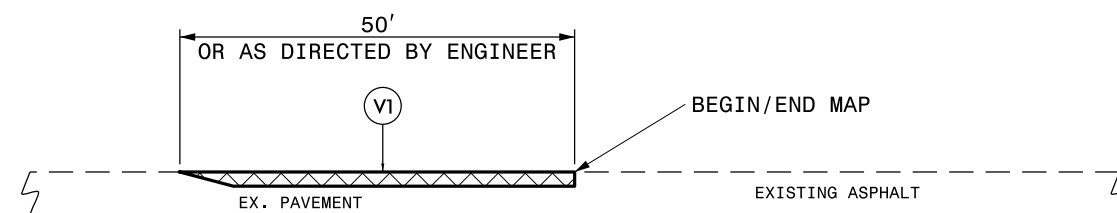
NOTE:

1. MILL TRAVEL LANES TO A DEPTH OF 2 1/2". DO NOT MILL PAVED SHOULDERS.
2. PLACE ASPHALT SURFACE COURSE AT FULL WIDTH OF EXISTING ASPHALT PAVEMENT, AS DIRECTED BY THE ENGINEER.
2. PERFORM SHOULDER RECONSTRUCTION AFTER PLACEMENT OF ASPHALT PAVEMENT, AS DIRECTED BY THE ENGINEER.
3. INCLUDES INCIDENTAL MILLING AT THE ENDS OF MAIN LINE SECTIONS AND BRIDGE APPROACH TIE-INS, OR AS DIRECTED BY THE ENGINEER. SEE DETAIL 1 & 2

PAVEMENT SCHEDULE

C1	PROP. APPROX. 3" ASPHALT CONCRETE SURFACE COURSE, TYPE S9.5C, IN (2) TWO LAYERS AT AN AVERAGE RATE OF 168 LBS. PER SQ. YD. PER LAYER
C2	PROP. APPROX. 1 1/2" ASPHALT CONCRETE SURFACE COURSE, TYPE S9.5C, AT AN AVERAGE RATE OF 168 LBS. PER SQ. YD.
D1	PROP. APPROX. 2 1/2" ASPHALT CONCRETE INTERMEDIATE COURSE, TYPE I 19.0C, AT AN AVERAGE RATE OF 285 LBS. PER SQ. YD.
V1	INCIDENTAL MILLING
V2	2 1/2" DEPTH MILLING
V3	0" - 1 1/2" DEPTH MILLING IN 7 FT
V4	3" DEPTH MILLING
T	SHOULDER RECONSTRUCTION
DRAWINGS NOT TO SCALE	

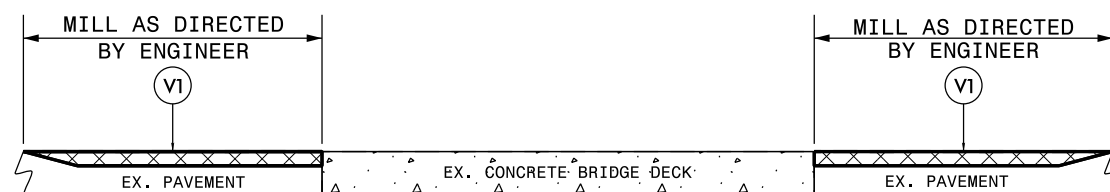
MILLING TYPICALS



DETAIL 1
BEGIN/END MAP TIE-IN

NOTE:

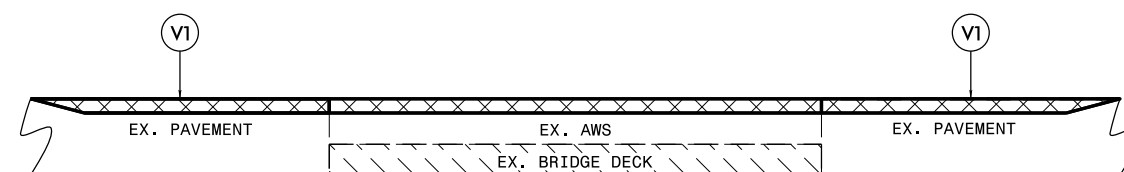
- MILLING SHALL BE PERFORMED AT MAIN LINE TIE-INS AND Y-LINE TIE-INS AS DIRECTED BY THE ENGINEER, IN ACCORDANCE WITH THIS DETAIL.



DETAIL 2
BRIDGE MILLING

NOTE:

- MILLING SHALL BE PERFORMED AT THE BRIDGE APPROACHES AS DIRECTED BY THE ENGINEER, IN ACCORDANCE WITH THIS DETAIL.
- AFTER MILLING FOR BRIDGE APPROACHES, PERFORM SIX INCH MILL PATCHING AT A DEPTH OF SIX (6) INCHES FOR A DISTANCE OF 25 FT WITHIN THE TRAVEL LANES FROM THE BRIDGE APPROACH FOR BRIDGE NUMBERS #60 & #62 OVER THE NEUSE RIVER AND FOR BRIDGE NUMBERS #56 & #57 OVER THE NEUSE RIVER OVERFLOW.

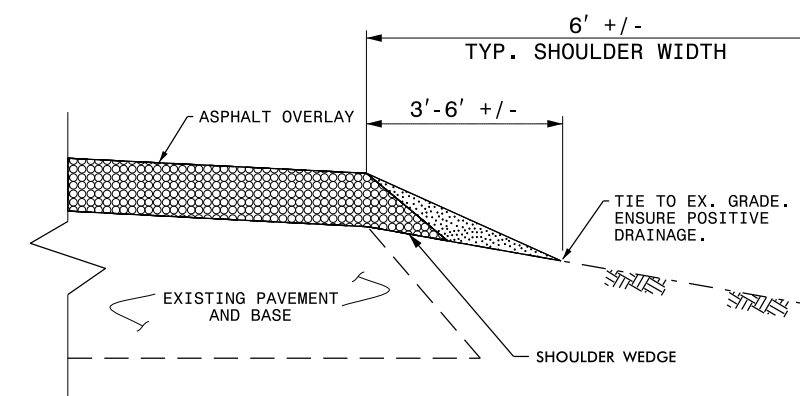


DETAIL 3
BRIDGE MILLING

NOTE:

- INCLUDES MILLING FOR THE ENTIRE WIDTH OF THE BRIDGE WEARING SURFACE, AS DIRECTED BY THE ENGINEER.
- PERFORM 1½" MILLING AND 1½" OVERLAY ON BRIDGE #73 OVER SOUTHWEST CREEK.

SHOULDER RECONSTRUCTION TYPICAL



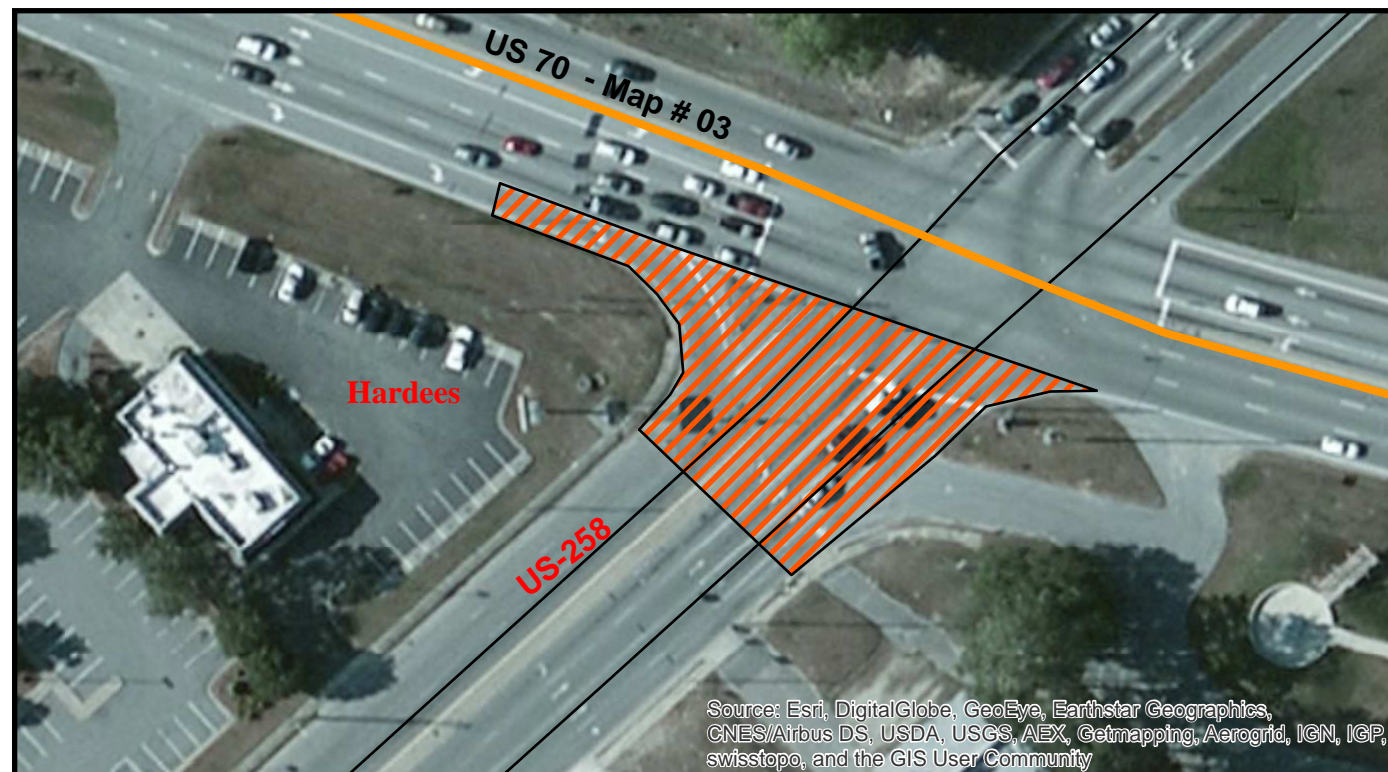
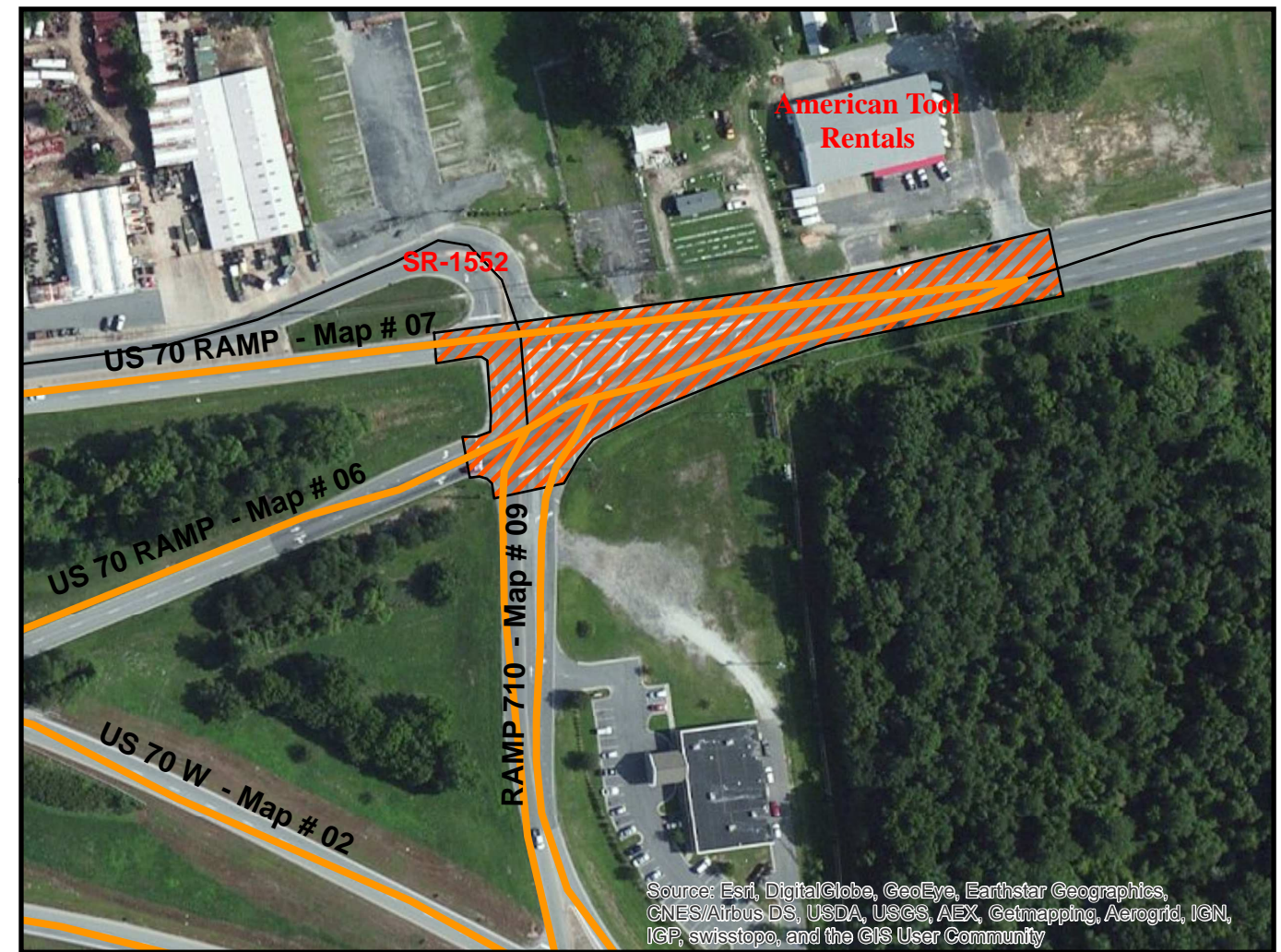
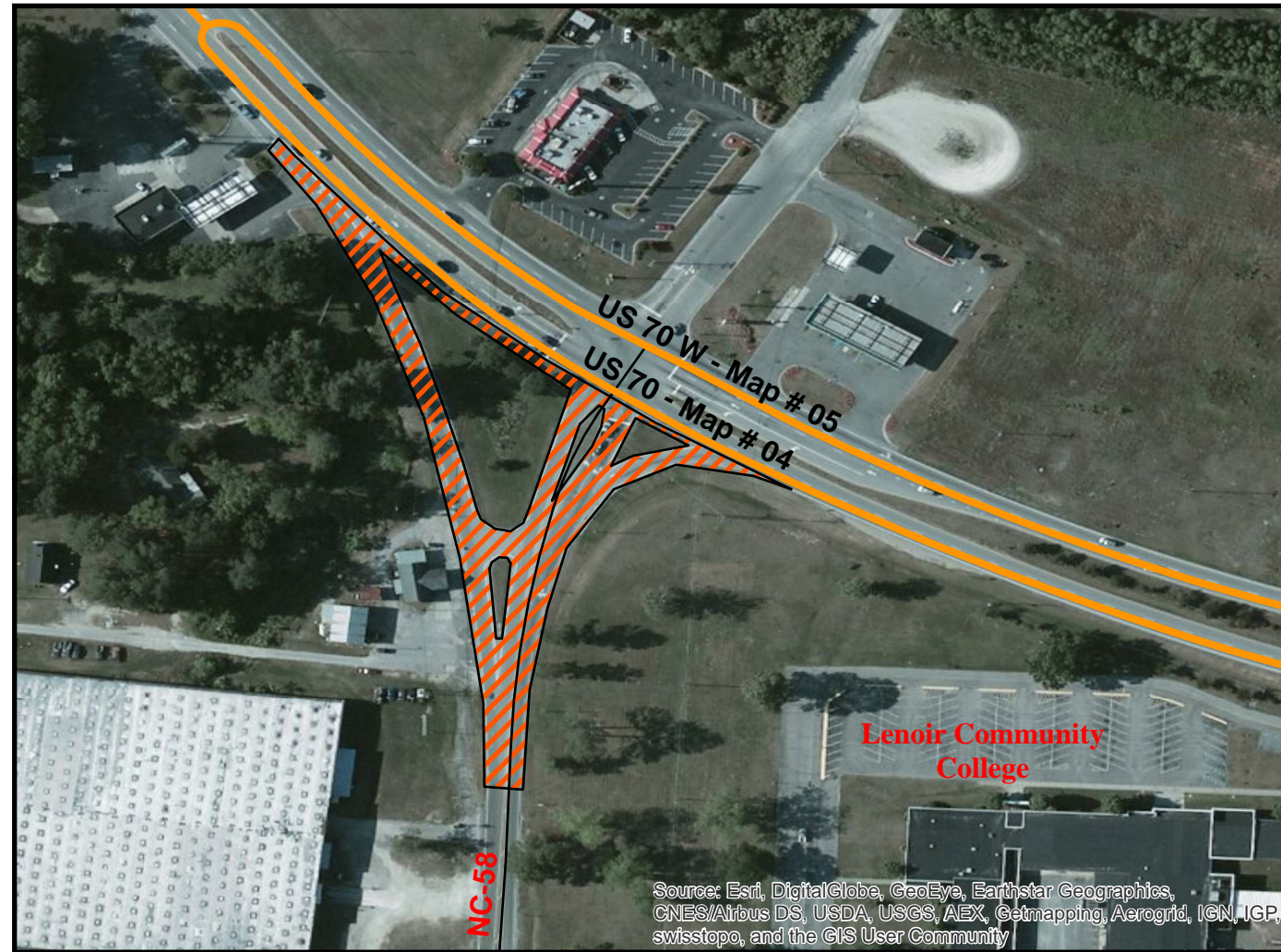
SHOULDER RECONSTRUCTION DETAIL

NOTE:

- SHOULDERS SHALL BE RECONSTRUCTED AS SHOWN IN STD. DWG. NO. 560.01 & 560.02, WITH A MINIMUM SLOPE OF 1" PER FOOT TO ENSURE POSITIVE DRAINAGE AWAY FROM THE ROADWAY.
- A VEGETATIVE BUFFER SHALL BE MAINTAINED BETWEEN THE DISTURBED AREA ALONG THE EDGE OF PAVEMENT AND THE DITCH SHOULDER POINT TO MINIMIZE EROSION. PULLING DITCHES OR CUTTING SHOULDERS TO GENERATE BORROW MATERIAL WILL NOT BE ALLOWED.
- REQUIRED BORROW MATERIAL MAY BE OBTAINED FROM NCDOT STOCKPILES. ANY EXCESS MATERIAL SHALL BE DISPOSED OF BY THE CONTRACTOR IN AN APPROVED DISPOSAL SITE.

Major Intersection Milling Layouts

PROJECT REFERENCE NO.	SHEET NO.
2017CPT.02.16.10521.1, ETC.	6

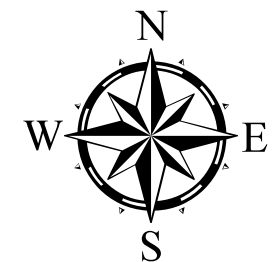


Locations:



Intersection #1: US-70 and NC-58

Intersection #2: US-70 Ramp and SR-1552

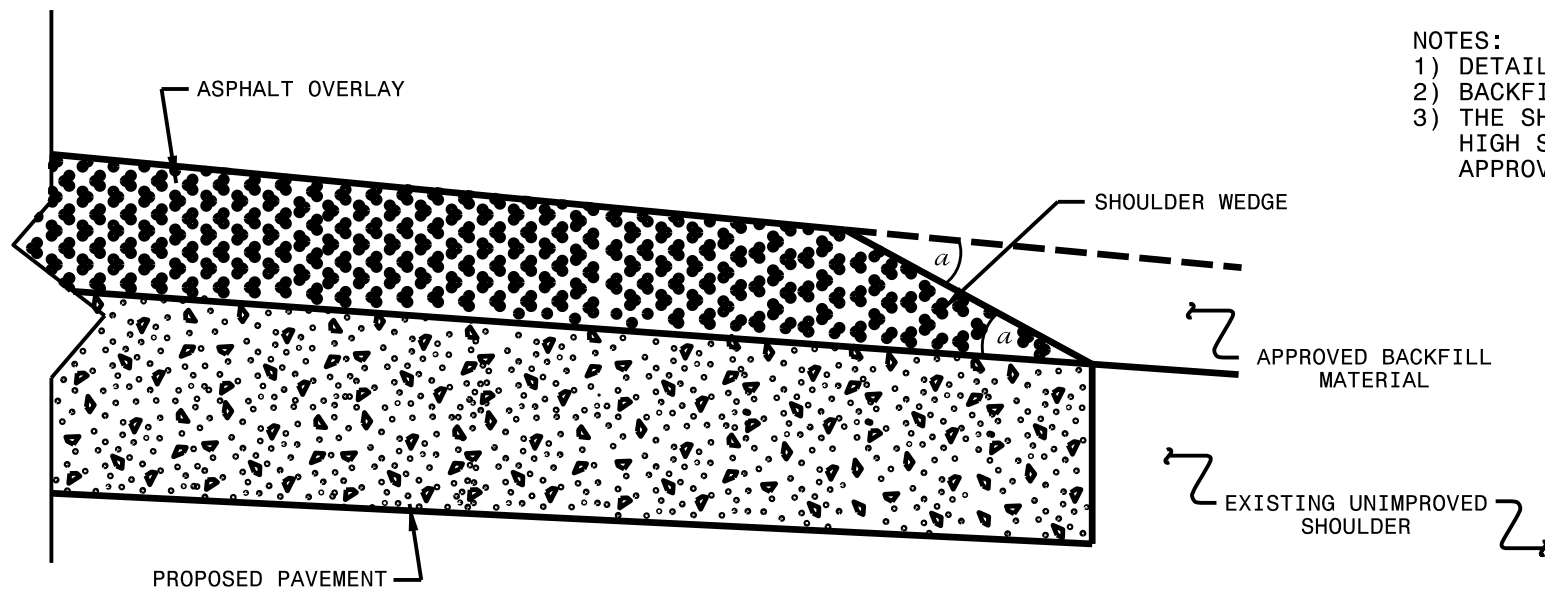
Intersection #3: US-70 and US-258



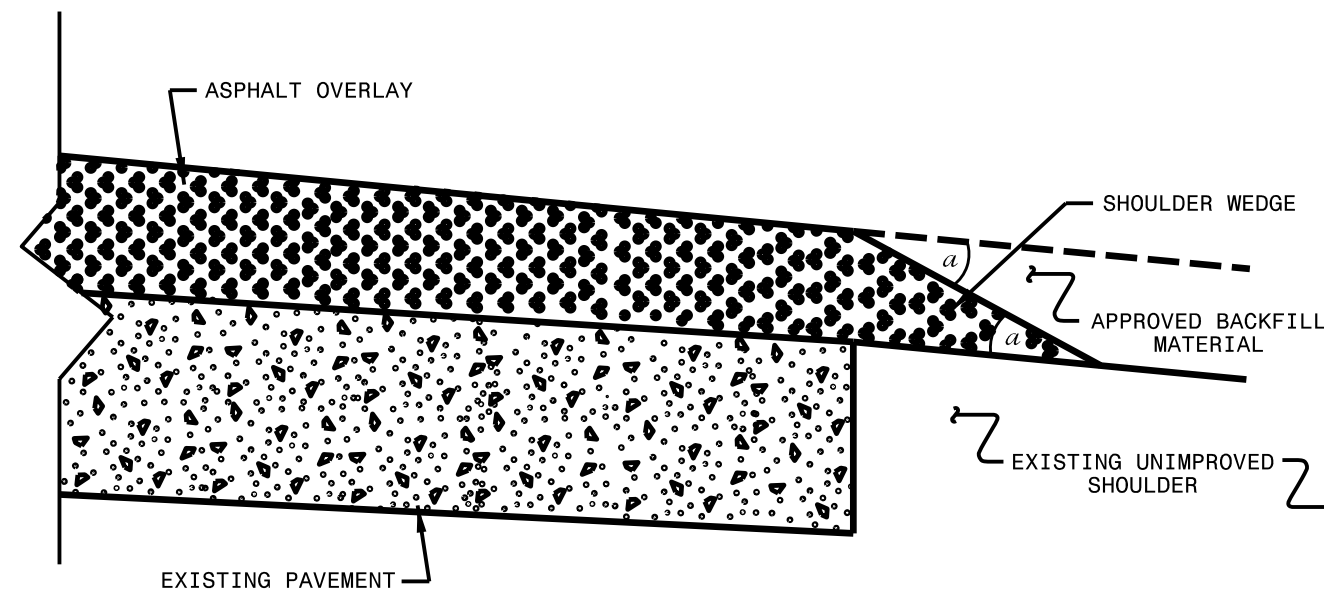
Legend

-  Project Route
-  1.5" Milling Limits

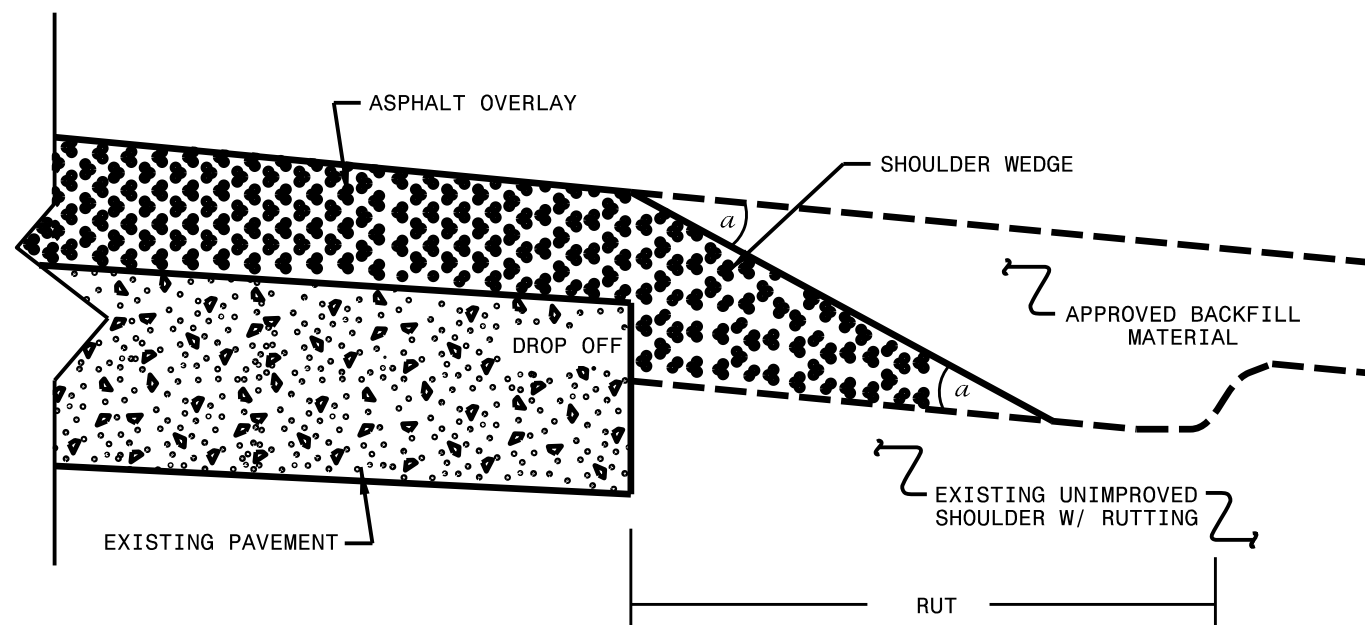
- NOTES:
- 1) DETAIL DOES NOT APPLY TO OGAFC AND ULTRA-THIN BONDED WEARING COURSE.
 - 2) BACKFILL SHOULDER WITH APPROVED MATERIAL.
 - 3) THE SHOULDER WEDGE DEVICE MAY BE DISENGAGED AT PAVED DRIVEWAYS, SIDE STREETS, HIGH SHOULDERS, AND OTHER LOCATIONS NOT FEASIBLE TO CONSTRUCT AS APPROVED BY THE ENGINEER.



SHOULDER WEDGE DETAIL
 (Resurfacing Projects w/ Widening or
 with Existing Paved Shoulder having no dropoffs)



SHOULDER WEDGE DETAIL
 (Resurfacing Projects w/ NO Widening)



SHOULDER WEDGE DETAIL
 (Resurfacing Adjacent to
 Rutted Shoulder)

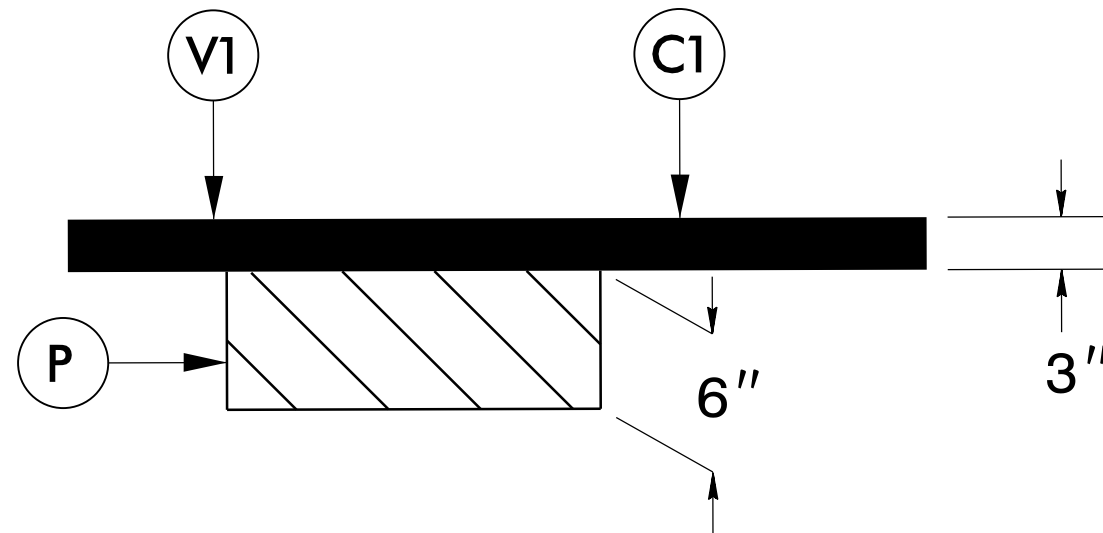
- SHOULDER WEDGE ANGLE = 30°

CONTRACT STANDARDS AND DEVELOPMENT UNIT	
Office 919-707-6950 FAX 919-250-4119	
SHOULDER WEDGE DETAILS	
ORIGINAL BY: T.SPELL	DATE: 7-19-11
MODIFIED BY:	DATE: 2/2/16
CHECKED BY:	DATE:
FILE SPEC: s:\sp7\details\stand\shoulderwedgedeta11.dgn	

DOCUMENT NOT CONSIDERED FINAL
UNLESS ALL SIGNATURES COMPLETED

 C:\SYSTEM32\CONSOLE\$
 #####
 C:\SYSTEM32\CONSOLE\$
 #####

6" DEPTH MILL PATCHING DETAIL



PAVEMENT SCHEDULE	
C1	PROP. APPROX. 3" ASPHALT CONCRETE SURFACE COURSE, TYPE S9.5C, IN (2) TWO LAYERS AT AN AVERAGE RATE OF 168 LBS. PER SQ. YD. PER LAYER
V1	INCIDENTAL MILLING
P	6" DEPTH MILL PATCHING W/ B 25.0B
DRAWINGS NOT TO SCALE	

NOTE:

1. THE CONTRACTOR SHALL PERFORM ANY UNIFORM OR INCIDENTAL MILLING AT TIE-INS BEFORE PERFORMING THE 6" DEPTH MILL PATCHING.
2. THE CONTRACTOR SHALL PERFORM THE 6" DEPTH MILL PATCHING REMOVAL AND REPLACEMENT IN THE SAME DAY.
3. 6" DEPTH MILL PATCHING SHALL BE PERFORMED AT LOCATIONS AS SHOWN ON THE PLANS AND AS DIRECTED BY THE ENGINEER.

PROJECT NO.	SHEET NO.
2017CPT.02.16.10521.1, ETC.	9

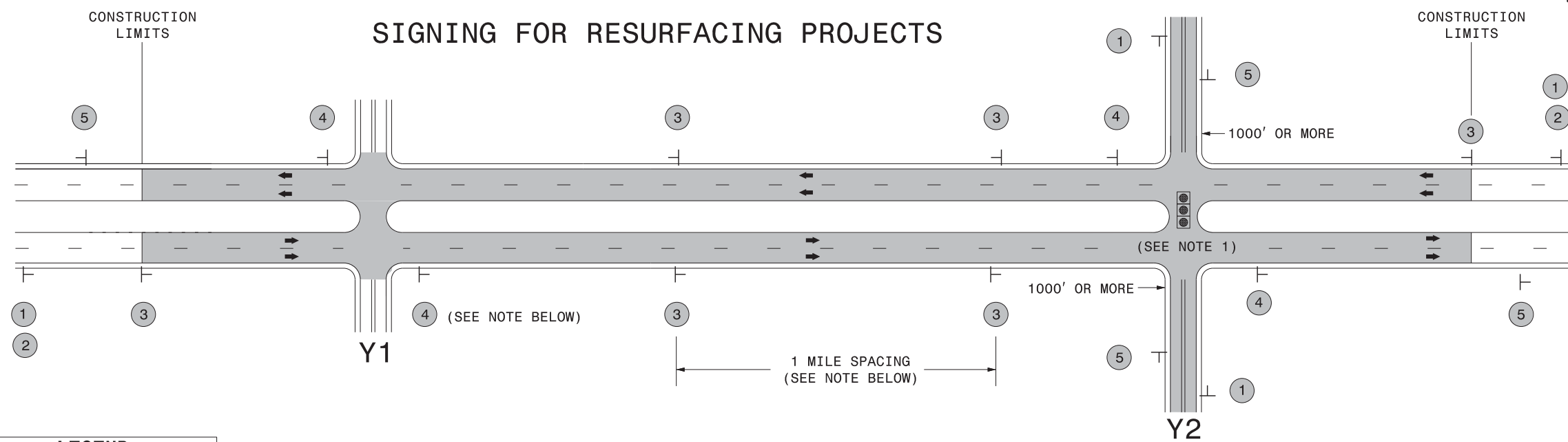
SUMMARY OF QUANTITIES

PROJECT NO	COUNTY	MAP NO	ROUTE	DESCRIPTION	TYP	LANES	LANE TYPE	FINAL SURFACE TESTING REQUIRED	WARM MIX ASPHALT REQUIRED	LENGTH MI	WIDTH FT	HAULING NCDOT SUPPLIED SHOULDER MATERIAL EA	INCIDENTAL STONE BASE TONS	SHOULDER RECONSTRUCTION SMI	3" MILLING SY	2.5" MILLING SY	1.5" MILLING SY	0" TO 1.5" MILLING SY	INCIDENTAL MILLING SY	6" DEPTH MILL PATCHING (B25.0B) TON	INTER-MEDIATE COURSE, I19.0C TONS	SURFACE COURSE, S9.5C TONS	ASPHALT BINDER FOR PLANT MIX TONS	PORTABLE LIGHTING LS	TEMPORARY SILT FENCE LF	WATTLE LF	SEED & MULCHING AC	RESPONSE FOR EROSION CONTROL EA	
2017CPT.02.17.10541.1	Lenoir	1	US 70 EB	MT VERNON PARK ROAD TO 5 LANE SECTION	1	2	MD	NO	NO	3.27	29	164	25	6.54					400	100		10,087	595	0.25	50	25	4.09	2	
		2	US 70 WB	MT VERNON PARK ROAD TO 5 LANE SECTION	1	2	MD	NO	NO	3.28	29	164	50	6.56					400	100		10,401	614	0.25	50	25	4.10		
		3	US 70 EB/WB	BEGIN 5 LANE SECTION TO NC 58	3	2	MU	NO	NO	0.92	86				46,417								8,446	498	0.30			0.20	
		4	US 70 EB	NC 58 TO JONES COUNTY LINE	1	2	MD	NO	NO	3.39	30	170	50	6.78					400				10,916	644		100	50	4.24	1
		5	US 70 WB	NC 58 TO JONES COUNTY LINE	1,5	2	MD	NO	NO	3.38	30	169	50	6.76			31,000			600		4,628	7,223	648		100	50	4.22	
		6	US 70 RAMP	US 70 WB TO 4 LANE SECTION	2	2	M2	NO	NO	0.40	60	20		0.80				6,000					2,423	143	0.05			0.50	
		7	US 70 RAMP	4 LANE SECTION TO US 70 EB	4	2	M2	NO	NO	0.42	30	11		0.42					1,725				1,277	75	0.05			0.32	
		8	RAMP 708	US 70 TO US 70	2	2	M2	NO	NO	0.14	25	4		0.14									355	21	0.05			0.11	
		9	RAMP 710	US 70 TO US 70	2	2	M2	NO	NO	0.15	25	4		0.15									381	22	0.05			0.11	
TOTAL FOR PROJ NO. 2017CPT.02.17.10541.1										15.35		706	175	28.15	46,417	31,000	6,000	1,725	1,800	200	4,628	51,509	3,260	1.00	300	150	17.88	3	
2017CPT.02.16.10521.1	Jones	10	US 70 EB	LENOIR COUNTY LINE TO CRAVEN COUNTY LINE	1	2	MD	NO	NO	3.90	32	195	200	7.80					500			13,264	783		250	75	4.88	1	
		11	US 70 WB	LENOIR COUNTY LINE TO CRAVEN COUNTY LINE	1	2	MD	NO	NO	3.92	32	196	200	7.84					500			13,332	787		250	75	4.90		
TOTAL FOR PROJ NO. 2017CPT.02.16.10521.1										7.82		391	400	15.64					1,000			26,596	1,570		500	150	9.78	1	
GRAND TOTAL										23.17		1,097	575	43.79	46,417	31,000	6,000	1,725	2,800	200	4,628	78,105	4,830	1.00	800	300	27.66	4	

THERMOPLASTIC AND PAINT QUANTITIES

PROJECT NO	COUNTY	MAP NO	ROUTE	DESCRIPTION	TYP	LANES	LANE TYPE	LENGTH	WIDTH	4413000000-E	4457000000-N	4510000000-N	4688000000-E		4690000000-E		4700000000-E		4702000000-E	4710000000-E	4721000000-E	4725000000-E						4775000000-E				
										WORK ZONE ADVANCE/ GENERAL WARNING SIGNING	TEMPORARY TRAFFIC CONTROL	LAW ENFORCEMENT	6" X 90 M WHITE THERMO	6" X 90 M YELLOW THERMO	6" X 120 M WHITE THERMO	6" X 120 M YELLOW THERMO	12" X 90 M WHITE THERMO	12" X 90 M YELLOW THERMO	12" X 120 M WHITE THERMO	24" X 120 M WHITE THERMO	THERMO MSG ONLY 120 M	THERMO LT ARROW 90 M	THERMO RT ARROW 90 M	THERMO MERGE ARROW 90 M	THERMO STR ARROW 90 M	THERMO STR & RT ARROW 90 M	THERMO STR & LT ARROW 90 M	COLD APPLIED PLASTIC PAVEMENT MARKING LINES, TYPE II (6")				
										SF	LS	HR	LF	LF	LF	LF	LF	LF	LF	EA	EA	EA	EA	EA	EA	EA	EA	EA				
2017CPT.02.17.10541.1	Lenoir	1	US 70 EB	MT VERNON PARK ROAD TO 5 LANE SECTION	1	2	MD	3.27	29	370	0.14	20	17,266	17,266	4,578		1,000			40		16	7	4				1,624				
		2	US 70 WB	MT VERNON PARK ROAD TO 5 LANE SECTION	1	2	MD	3.28	29	370	0.14	20	17,318	17,318	4,428		1,000			68		18	3		4	2		1,624				
		3	US 70 EB/WB	BEGIN 5 LANE SECTION TO NC 58	3	2	MU	0.92	86	126	0.04	80	9,899		4,968	11,040	500	140	800	266	4	36	9		19	4						
		4	US 70 EB	NC 58 TO JONES COUNTY LINE	1	2	MD	3.39	30	380	0.15		17,899	17,899	4,577		500			70		23	12		4		2					
		5	US 70 WB	NC 58 TO JONES COUNTY LINE	1,5	2	MD	3.38	30	380	0.15		17,846	17,846	4,563		500			92		14	8		4	2		360				
		6	US 70 RAMP	US 70 WB TO 4 LANE SECTION	2	2	M2	0.40	60	45	0.01	20	2,112	2,112	540	700	800			58		4			2	2						
		7	US 70 RAMP	4 LANE SECTION TO US 70 EB	4	2	M2	0.42	30	45	0.01	20	2,218	2,218	567					70				3	1	1						
		8	RAMP 708	US 70 TO US 70	2	2	M2	0.14	25	18	0.01				739					924				3		1	2	1				
		9	RAMP 710	US 70 TO US 70	2	2	M2	0.15	25	18	0.01				792						40											
TOTAL FOR PROJ NO. 2017CPT.02.17.10541.1												15.35		1,752	0.66	160	86,089	74,659	24,221	12,664	4,300	140	800	744	4	111	42	7	35	13	3	3,608
													160,748	36,885	4,440												211					
2017CPT.02.16.10521.1	Jones	10	US 70 EB	LENOIR COUNTY LINE TO CRAVEN COUNTY LINE	1	2	MD	3.90	32	440	0.17		20,592	20,592	5,265							18	5									
		11	US 70 WB	LENOIR COUNTY LINE TO CRAVEN COUNTY LINE	1	2	MD	3.92	32	440	0.17		20,698	20,698	5,292								20	3	3							
		TOTAL FOR PROJ NO. 2017CPT.02.16.10521.1												7.82		880	0.34		41,290	41,290	10,557				38	8	3					
													82,580	10,557												49						
GRAND TOTAL												23.17		2,632	1.00	160	127,379	115,949	34,778	12,664	4,300	140	800	744	4	149	50	10	35	13	3	3,608
													243,328	47,442	4,440												260					

PROJECT NO	COUNTY	MAP NO	ROUTE	DESCRIPTION	TYP	LANES	LANE TYPE	LENGTH	WIDTH	4810000000-E		4820000000-E		4835000000-E	4840000000-N	4845000000-N					4850000000-E	4905000000-N				
										4" WHITE PAINT	4" YELLOW PAINT	8" WHITE PAINT	8" YELLOW PAINT	24" WHITE PAINT	PAINT MSG ONLY	PAINT LT ARROW	PAINT STR ARROW	PAINT RT ARROW	PAINT STR & RT ARROW	PAINT STR & LT ARROW	4" LINE REMOVAL	SNOW PLOWABLE MARKERS				
										LF	LF	LF	LF	LF	EA	EA	EA	EA	EA	EA	EA	EA	EA			
2017CPT.02.17.10541.1	Lenoir	1	US 70 EB	MT VERNON PARK ROAD TO 5 LANE SECTION	1	2	MD	3.27	29													1,624	300			
		2	US 70 WB	MT VERNON PARK ROAD TO 5 LANE SECTION	1	2	MD	3.28	29														1,624	290		
		3	US 70 EB/WB	BEGIN 5 LANE SECTION TO NC 58	3	2	MU	0.92	86	9,899	11,040	1,300	140	266	16	36	19	9	4					425		
		4	US 70 EB	NC 58 TO JONES COUNTY LINE	1	2	MD	3.39	30	2,000	700						1		1				1		315	
		5	US 70 WB	NC 58 TO JONES COUNTY LINE	1,5	2	MD	3.38	30	14,500	12,000						13	4	6	2				360	315	
		6	US 70 RAMP	US 70 WB TO 4 LANE SECTION	2	2	M2	0.40	60	450	700	500					2						2		26	
		7	US 70 RAMP	4 LANE SECTION TO US 70 EB	4	2	M2	0.42	30	100							1						1		28	
		8	RAMP 708	US 70 TO US 70	2	2	M2	0.14	25																9	
		9	RAMP 710	US 70 TO US 70	2	2	M2	0.15	25																10	
TOTAL FOR PROJ NO. 2017CPT.02.17.10541.1												15.35		26,949	24,440	1,800	140	501	16	52	24	16	7	3	3,608	1,718
										51,389	1,940												102			
2017CPT.02.16.10521.1	Jones	10	US 70 EB	LENOIR COUNTY LINE TO CRAVEN COUNTY LINE	1	2	MD	3.90	32														340			
		11	US 70 WB	LENOIR COUNTY LINE TO CRAVEN COUNTY LINE	1	2	MD	3.92	32															330		
		TOTAL FOR PROJ NO. 2017CPT.02.16.10521.1												7.82											670	
GRAND TOTAL												23.17		26,949	24,440	1,800	140	501	16	52	24	16	7	3	3,608	2,388
										51,389	1,940												102			



LEGEND
 | STATIONARY SIGN
 ← DIRECTION OF TRAFFIC FLOW

MAINLINE (-L-) SIGNING

-Y- LINE SIGNING

SIGNING NOTES AND PLACEMENT PER DIRECTION	①	 W20-1 48" X 48"	PLACE 1000' PRIOR TO BEGINNING OF CONSTRUCTION LIMITS. ONLY USED ON -Y- LINES IF RESURFACING LIMITS EXTEND 1000' ALONG -Y- LINE.	<p>NO REQUIRED STATIONARY SIGNING FOR THE FOLLOWING -Y- LINE CONDITIONS:</p> <ol style="list-style-type: none"> 1) LESS THAN 1000' OF RESURFACING ALONG -Y- LINE 2) SUBDIVISION ROADS 3) DEAD END ROADS <p>WHEN PAVING/CONSTRUCTION ACTIVITIES PROCEED ACROSS AN UNSIGNED -Y- LINE, ADVANCE WARNING PORTABLE SIGNS SHALL BE USED ALONG THE -Y- LINE AS SHOWN BELOW. REMOVE UPON COMPLETION OF WORK.</p> <div style="display: flex; justify-content: space-around; align-items: center;"> <div style="text-align: center;"> W20-1 48" X 48" </div> <div style="text-align: center;"> W20-7 A 48" X 48" </div> </div> <p>PLACED 500' IN ADVANCE OF FLAGGER. PLACED 250' IN ADVANCE OF FLAGGER.</p> <p>NOTES:</p> <ol style="list-style-type: none"> 1) MAY USE LAW ENFORCEMENT TO CONTROL TRAFFIC AT SIGNALIZED INTERSECTIONS AS DIRECTED BY THE ENGINEER. PROVIDE PORTABLE "ROAD WORK AHEAD" (W20-1) SIGNS 500' IN ADVANCE ALONG BOTH APPROACHES FROM THE SIDE STREETS WHEN PAVING PROCEEDS THROUGH THE INTERSECTION.
	②	 W7-3aP 24" X 18"	#2 SIGN ONLY USED WHEN RESURFACING LIMITS ARE 2 OR MORE MILES IN LENGTH. ROUND UP TO NEXT WHOLE NUMBER. (NO FRACTIONAL OR DECIMAL NUMBERS)	
	③	 SP 13107 48" X 48"	PLACE INITIALLY AT THE CONSTRUCTION LIMITS AND SPACED 1 MILE APART THEREAFTER. IF NO -Y- LINES EXIST, PLACE 2ND SET 1/2 MILE FROM THE CONSTRUCTION LIMITS AND THEN SPACE 1 MILE THEREAFTER.	
	④	 SP 13106 48" X 48"	THESE ARE FOR -Y- LINES THAT ARE "THROUGH" ROADWAYS. DEAD END AND SUBDIVISION ROADS ARE NOT "THROUGH" ROADWAYS. INSTALL 500' +/- FROM EACH -Y- LINE APPROACH AS SHOWN ABOVE. FOR MULTIPLE -Y- LINES THAT ARE SEPARATED BY 0.25 MILES OR LESS, TREAT AS A SINGLE UNIT AND INSTALL WITHIN 500' OF EACH APPROACH. A MAXIMUM OF 2 SIGN SETS PER MILE. DO NOT INSTALL WHEN -Y- LINES ARE WITHIN 0.5 MILES FROM "END ROAD WORK" SIGN.	
⑤	 G20-2 A 48" X 24"	PLACE 500' FOLLOWING THE END OF CONSTRUCTION LIMITS.		

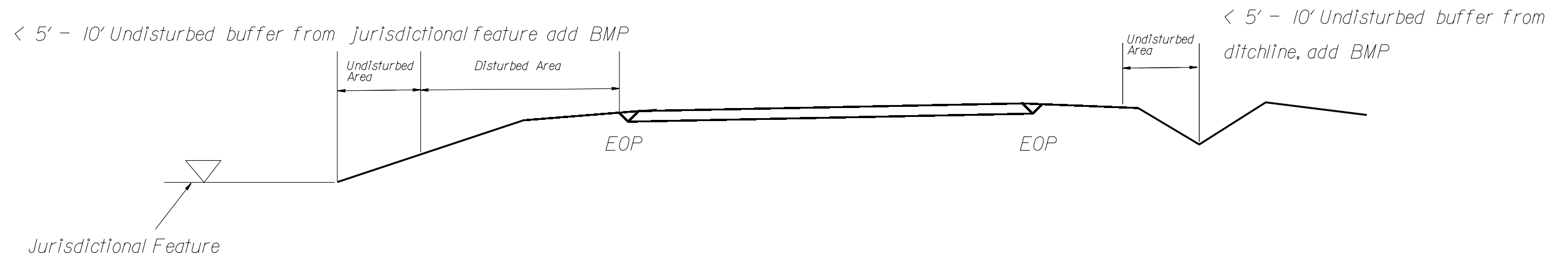
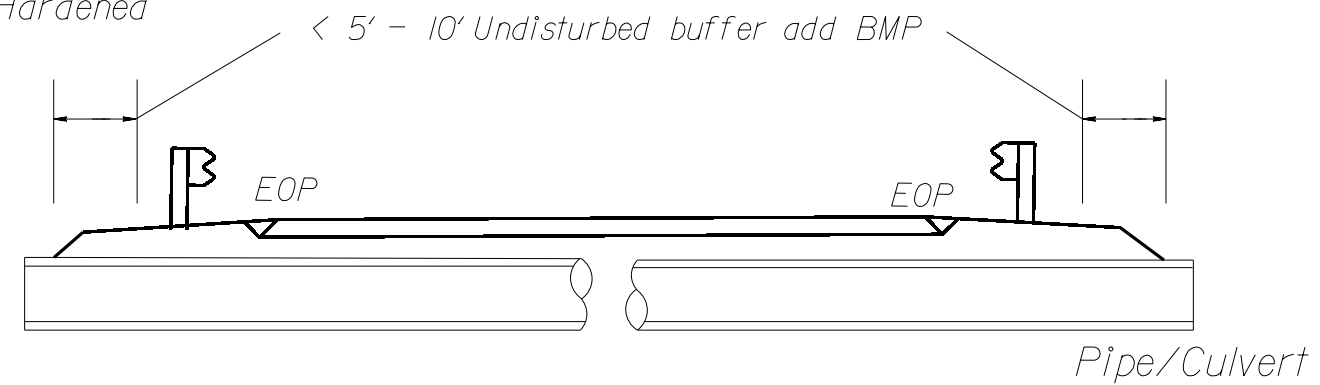
3/23/2015 C:\Users\rmgarrrett\Downloads\Resurfacing_AdvWarn_LrSu_Shldr.dgn User:rmgarrrett

**RESURFACING
 ADVANCE WARNING SIGNS
 FOR RURAL AND SUBURBAN
 MULTI-LANE ROADWAYS
 W/ SHOULDER SECTIONS**

NOTES: Less than 5' - 10' undisturbed buffer from ROW, ditchline, water feature, or drainage inlet, add BMP.

BMP Options: Wattle, Silt Fence or Hardened Aggregate.

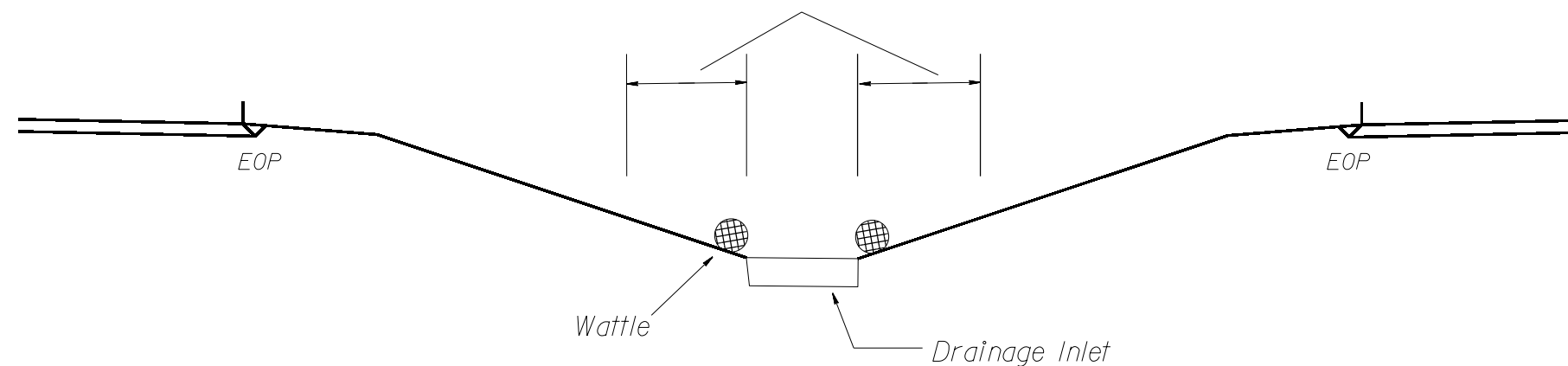
EROSION CONTROL DETAIL



Use BMP's if shoulders and/or frontslopes and/or ditchline and/or backslopes are disturbed

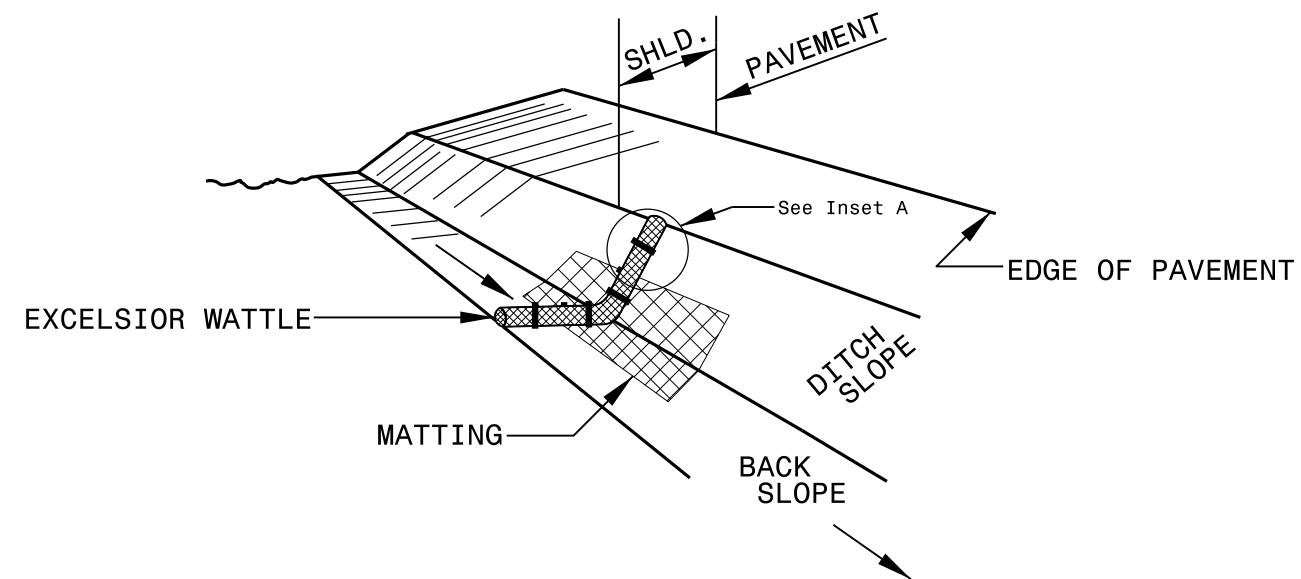


< 5' - 10' Undisturbed buffer from inlet, add wattle

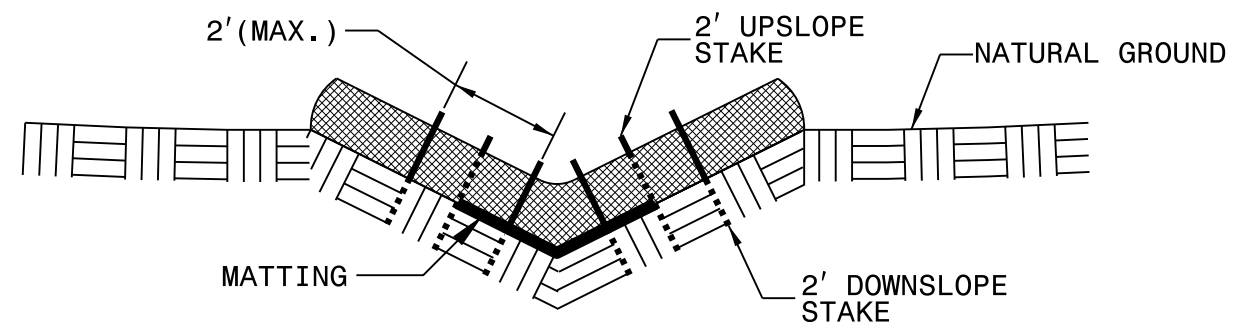


NOT TO SCALE

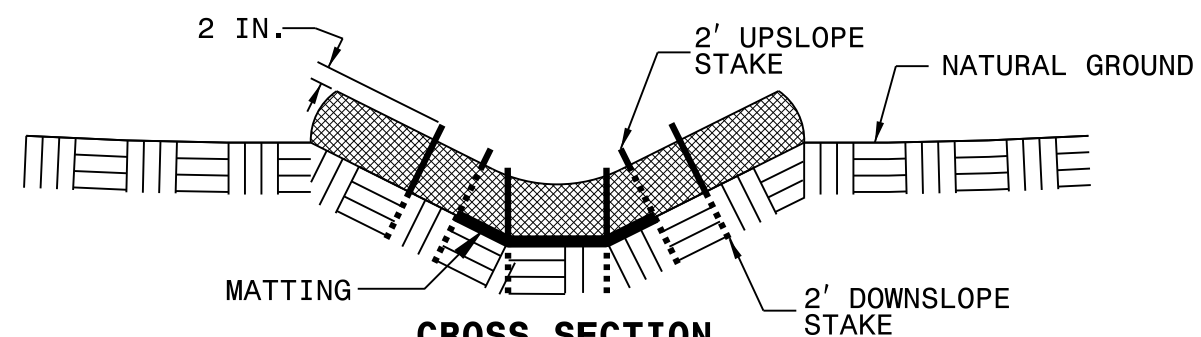
WATTLE DETAIL



ISOMETRIC VIEW



**CROSS SECTION
VEE DITCH**



**CROSS SECTION
TRAPEZOIDAL DITCH**

NOTES:

USE MINIMUM 12 IN. DIAMETER EXCELSIOR WATTLE.

USE 2 FT. WOODEN STAKES WITH A 2 IN. BY 2 IN. NOMINAL CROSS SECTION.

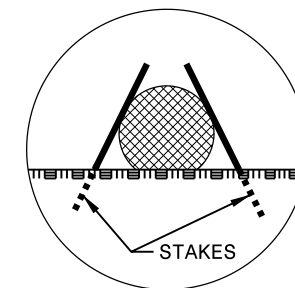
ONLY INSTALL WATTLE(S) TO A HEIGHT IN DITCH SO FLOW WILL NOT WASH AROUND WATTLE AND SCOUR DITCH SLOPES AND AS DIRECTED.

INSTALL A MINIMUM OF 2 UPSLOPE STAKES AND 4 DOWNSLOPE STAKES AT AN ANGLE TO WEDGE WATTLE TO BOTTOM OF DITCH.

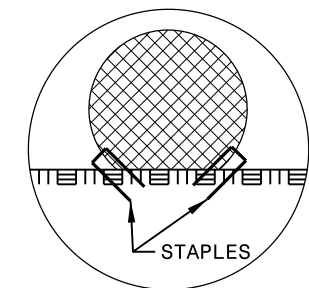
PROVIDE STAPLES MADE OF 0.125 IN. DIAMETER STEEL WIRE FORMED INTO A U SHAPE NOT LESS THAN 12" IN LENGTH.

INSTALL STAPLES APPROXIMATELY EVERY 1 LINEAR FOOT ON BOTH SIDES OF WATTLE AND AT EACH END TO SECURE IT TO THE SOIL.

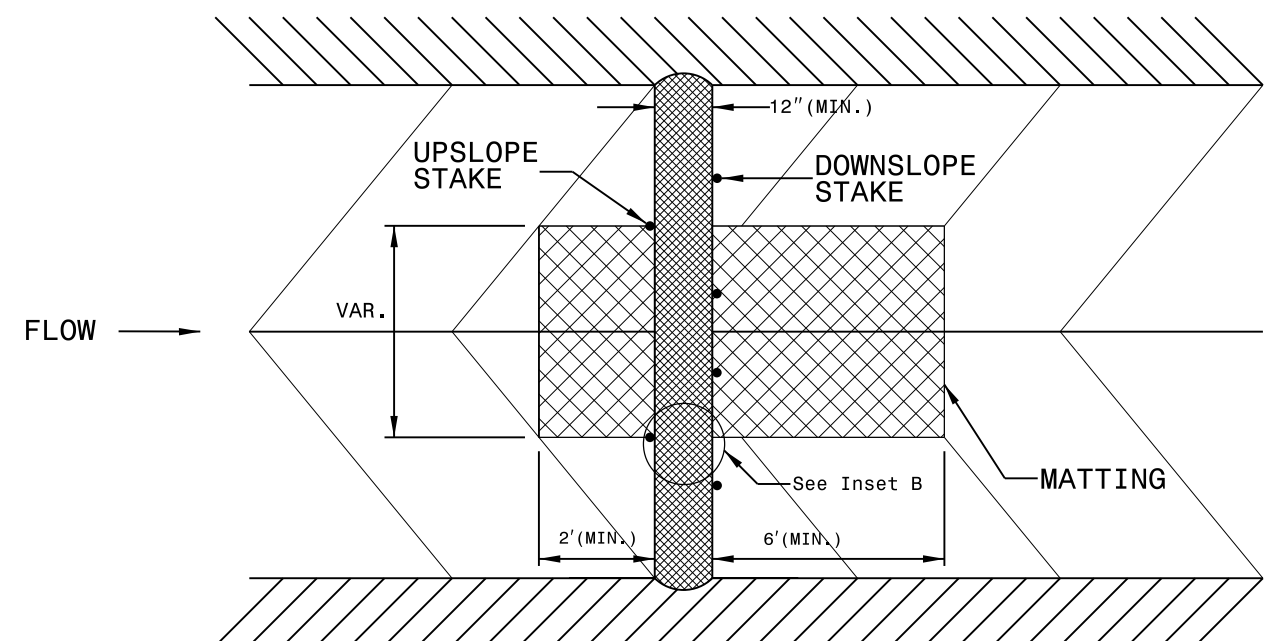
INSTALL MATTING IN ACCORDANCE WITH SECTION 1631 OF THE STANDARD SPECIFICATIONS.



INSET A



INSET B



TOP VIEW

NOT TO SCALE