

**This electronic collection of documents is provided
for the convenience of the user
and is Not a Certified Document –**

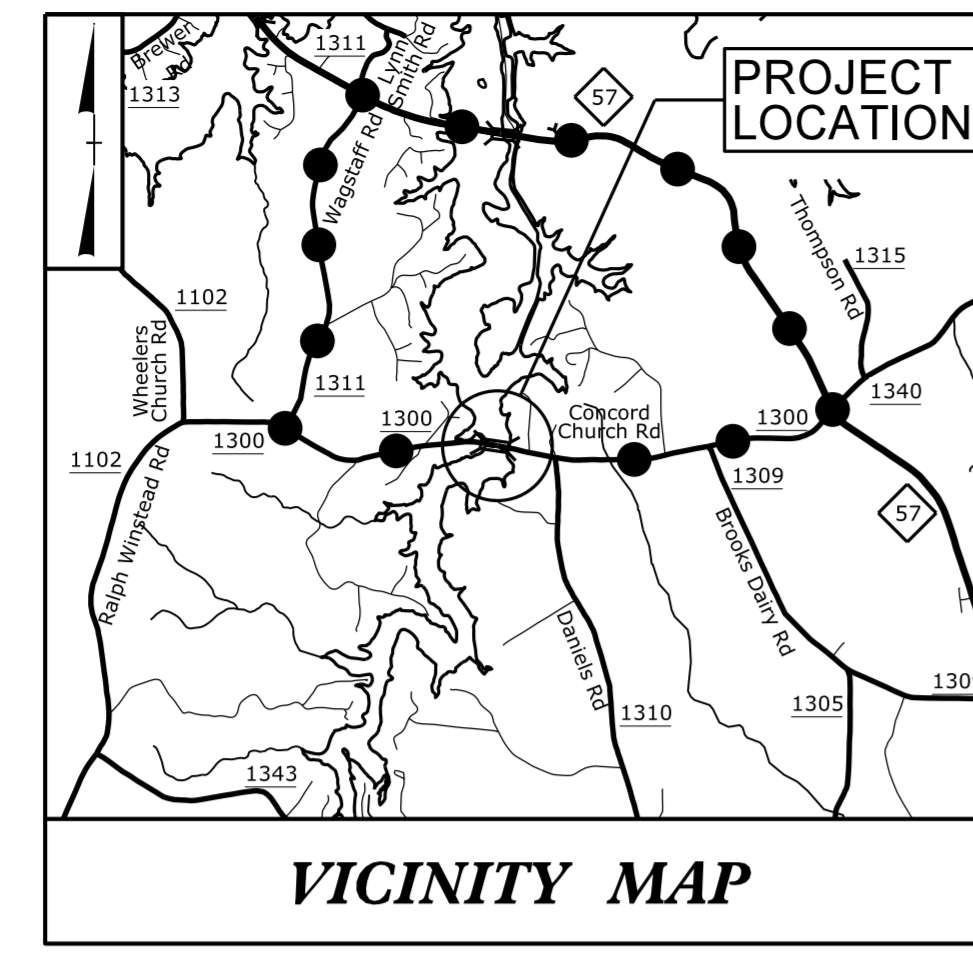
**The documents contained herein were originally issued
and sealed by the individuals whose names and license
numbers appear on each page, on the dates appearing
with their signature on that page.**

**This file or an individual page
shall not be considered a certified document.**

T.I.P. NO.	SHEET NO.
B-5327	UO-1

NOTE:
 ALL UTILITY WORK SHOWN ON THIS SHEET IS DONE BY OTHERS.
 NO PAYMENT WILL BE MADE TO THE CONTRACTOR FOR UTILITY WORK SHOWN ON THIS SHEET.

TIP PROJECT: B-5327

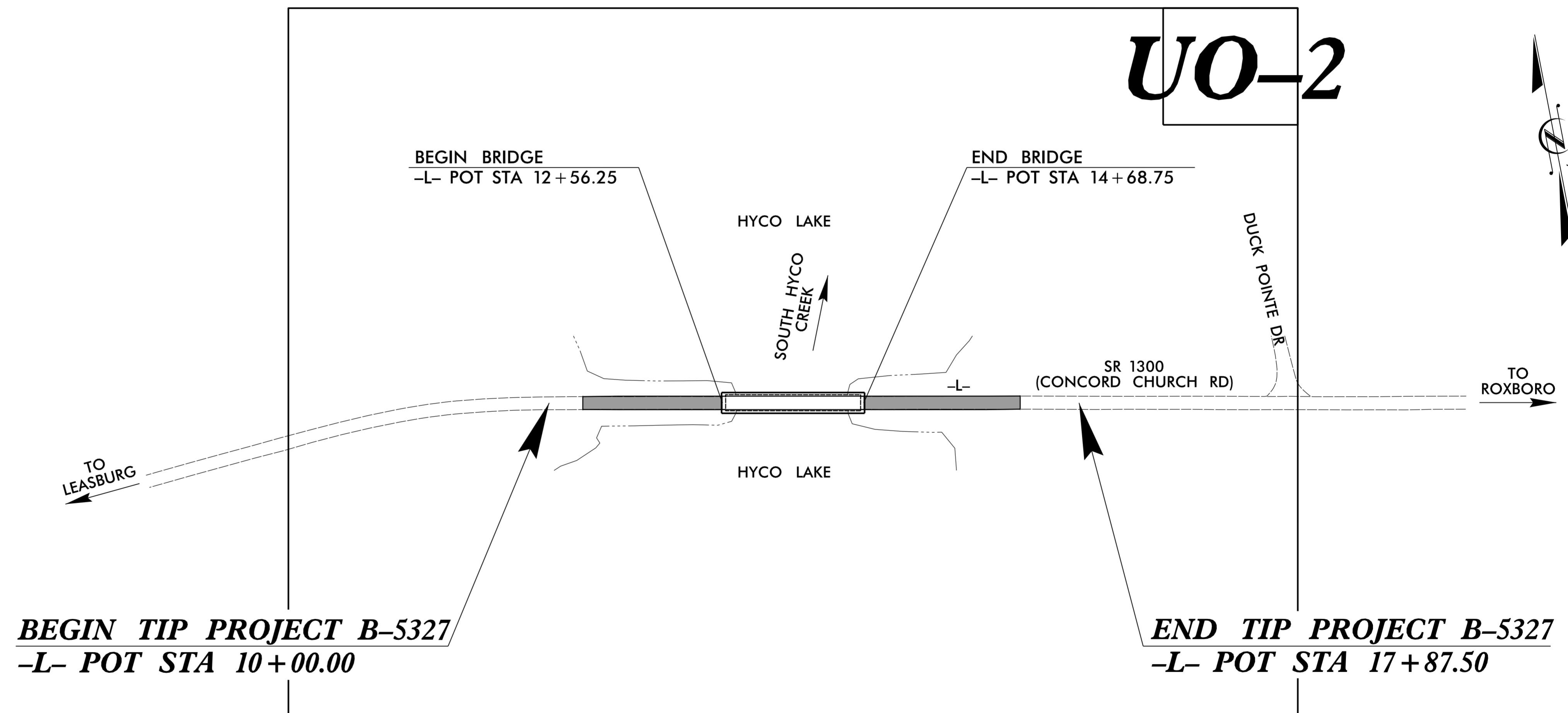


STATE OF NORTH CAROLINA
 DIVISION OF HIGHWAYS

**UTILITIES BY OTHERS PLANS
 PERSON COUNTY**

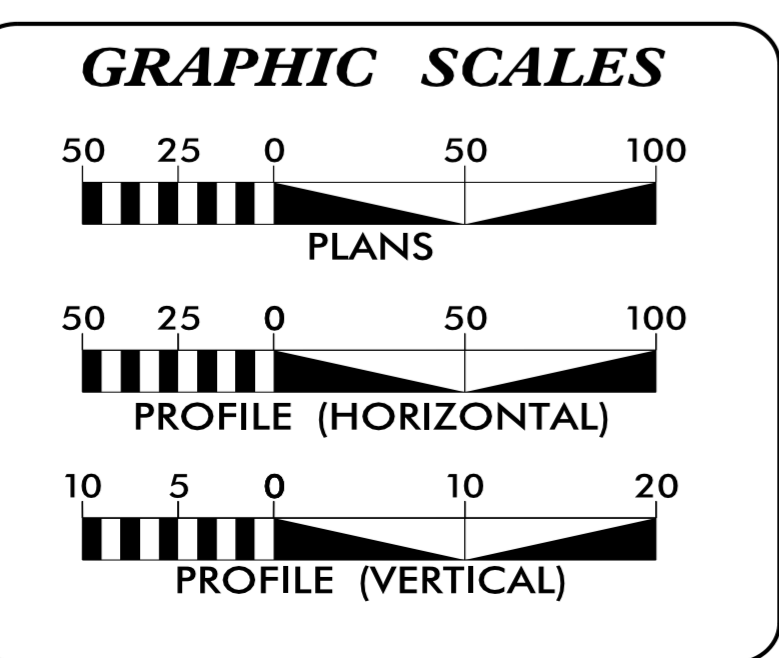
**LOCATION: BRIDGE 49 OVER SOUTH HYCO CREEK
 ON SR 1300 (CONCORD CHURCH RD)**

TYPE OF WORK: UTILITIES RELOCATION



**BEGIN TIP PROJECT B-5327
 -L- POT STA 10+00.00**

**END TIP PROJECT B-5327
 -L- POT STA 17+87.50**



INDEX OF SHEETS

SHEET NO.:	DESCRIPTION:
UO-1	TITLE SHEET
UO-2	UBO PLAN SHEET

UTILITY OWNERS WITH CONFLICTS

(A) TELEPHONE LINE - CENTURY LINK

PREPARED IN THE OFFICE OF:
 DEPARTMENT OF TRANSPORTATION
 DIVISION OF HIGHWAY
 UTILITIES UNIT

DONNA JACKSON, PE. UTILITY PROJECT MANAGER
TANGA SAMPSON PROJECT UTILITY COORDINATOR
JONG-TAE YOON, PE. PROJECT UTILITY ENGINEER

**DIVISION OF HIGHWAYS
 UTILITIES UNIT**
 1555 MAIL SERVICES CENTER
 RALEIGH, NC 27699-1555
 PHONE (919) 707-6690
 FAX (919) 250-4151

DONNA JACKSON, PE. UTILITIES REGIONAL MANAGER
JONG-TAE YOON, PE. UTILITIES ENGINEER
ED REAMS, JR. UTILITIES AREA COORDINATOR
TANGA SAMPSON UTILITIES COORDINATOR

UTILITIES BY OTHERS

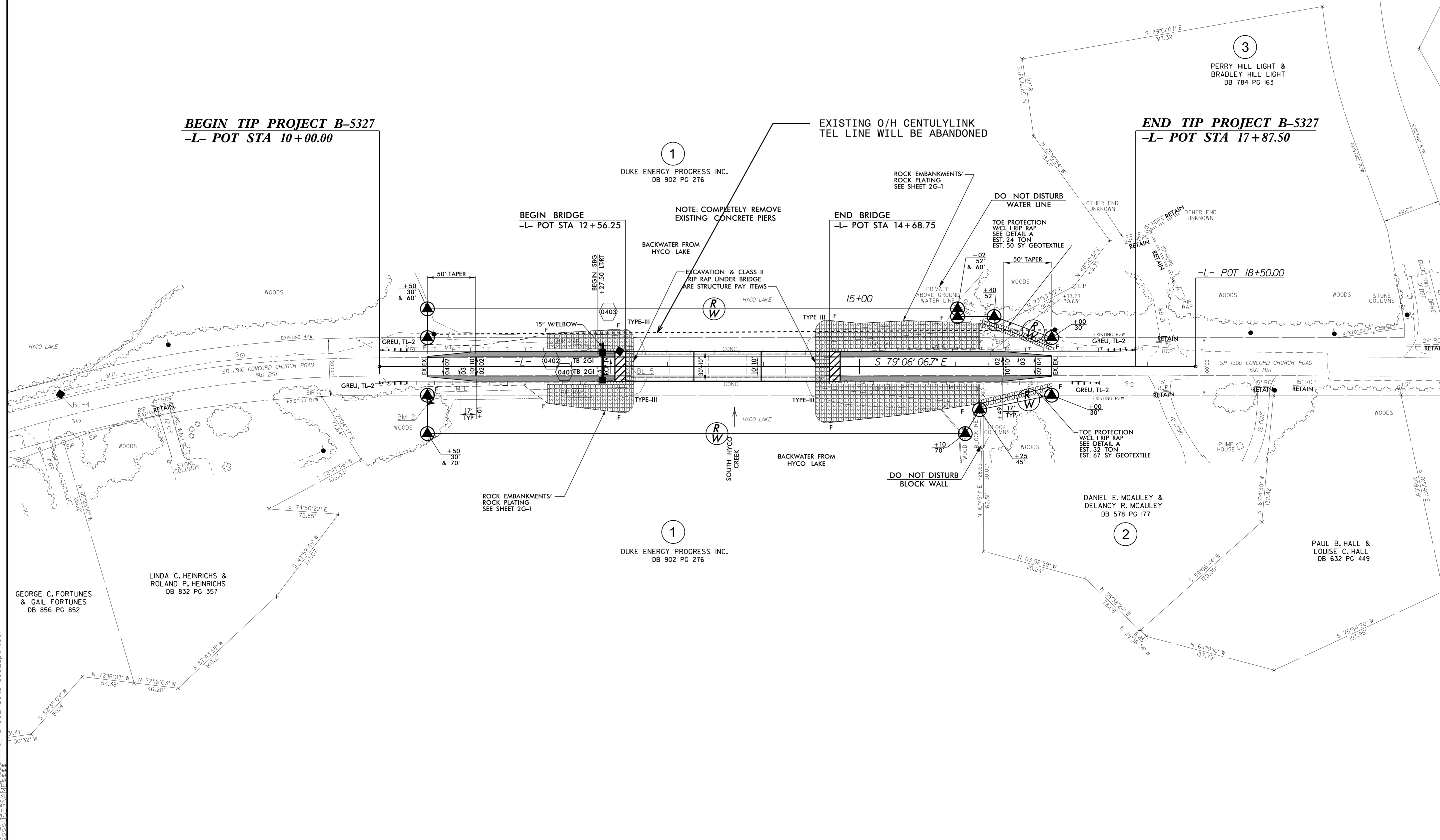
NOTE:
ALL UTILITY WORK SHOWN ON THIS SHEET WILL BE DONE BY OTHERS. NO PAYMENT WILL BE MADE TO THE CONTRACTOR FOR UTILITY WORK SHOWN ON THIS SHEET.

NAD 83 NSRS 2007

5/14/99

BEGIN TIP PROJECT B-5327
-L- POT STA 10+00.00

END TIP PROJECT B-5327
-L- POT STA 17+87.50



BEGIN BRIDGE
-L- POT STA 12+56.25

END BRIDGE
-L- POT STA 14+68.75

DUKE ENERGY PROGRESS INC.
DB 902 PG 276

ROCK EMBANKMENTS/
ROCK PLATING
SEE SHEET 2G-1

NOTE: COMPLETELY REMOVE
EXISTING CONCRETE PIERS

BACKWATER FROM
HYCO LAKE

EXCAVATION & CLASS II
RIP RAP UNDER BRIDGE
ARE STRUCTURE PAY ITEMS

DO NOT DISTURB
WATER LINE

TOE PROTECTION
W/CL RIP RAP
SEE DETAIL A
EST. 24 TON
EST. 50 SY GEOTEXTILE

-L- POT 18+50.00

ROCK EMBANKMENTS/
ROCK PLATING
SEE SHEET 2G-1

DUKE ENERGY PROGRESS INC.
DB 902 PG 276

DANIEL E. MCAULEY &
DELANCY R. MCAULEY
DB 578 PG 177

PAUL B. HALL &
LOUISE C. HALL
DB 632 PG 449

GEORGE C. FORTUNES
& GAIL FORTUNES
DB 856 PG 852

LINDA C. HEINRICHS &
ROLAND P. HEINRICHS
DB 832 PG 357

08-JUN-2017 12:44
C:\Users\jgibson\OneDrive\Documents\Projects\B-5327-Ut-4-U02.psh.dgn