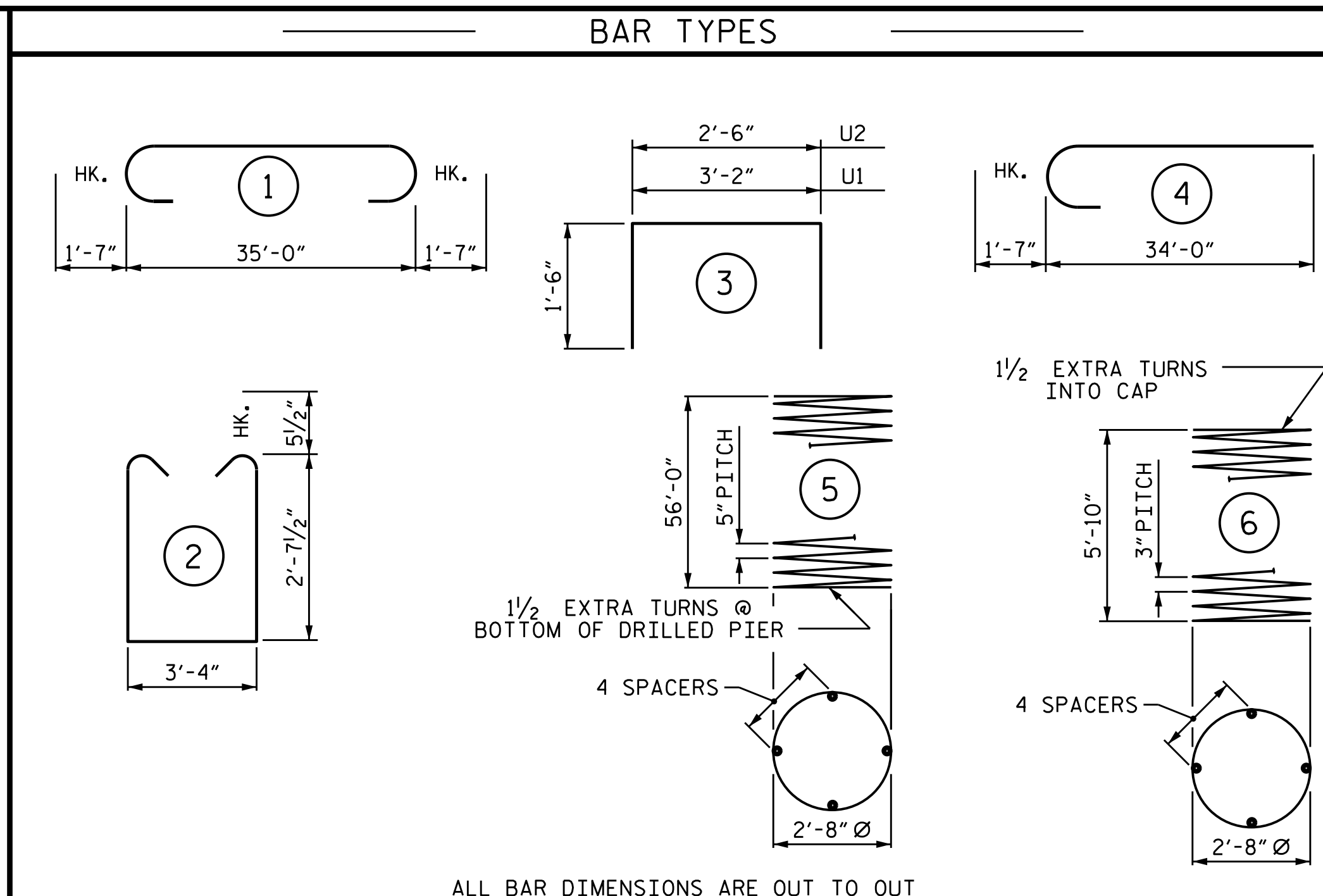
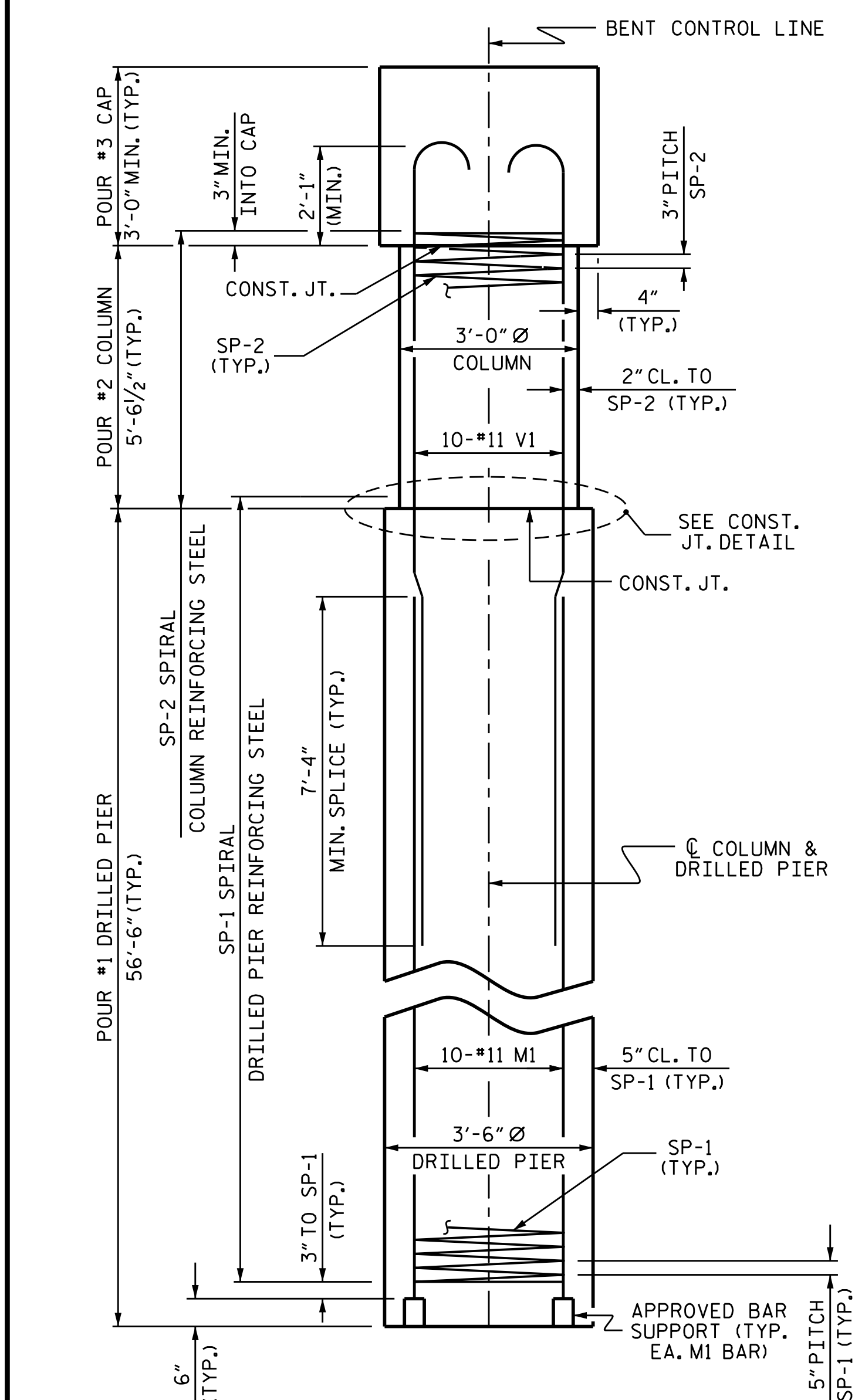


PLAN OF DRILLED PIERS & COLUMNS

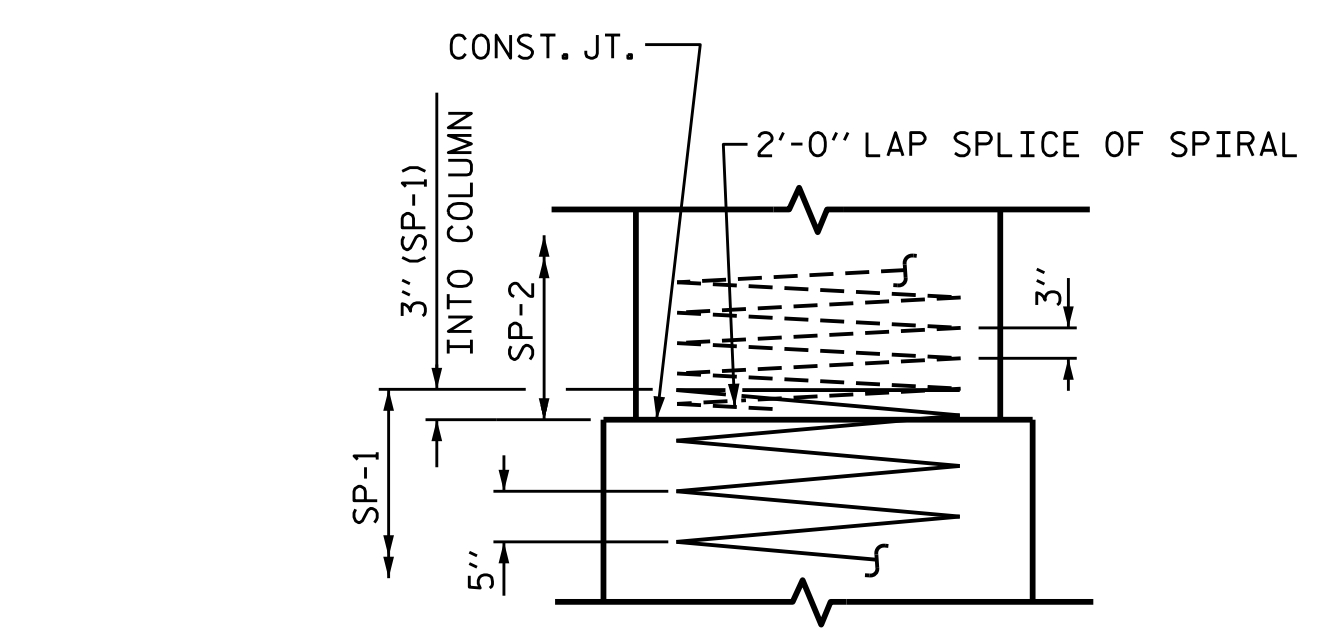


ALL BAR DIMENSIONS ARE OUT TO OUT

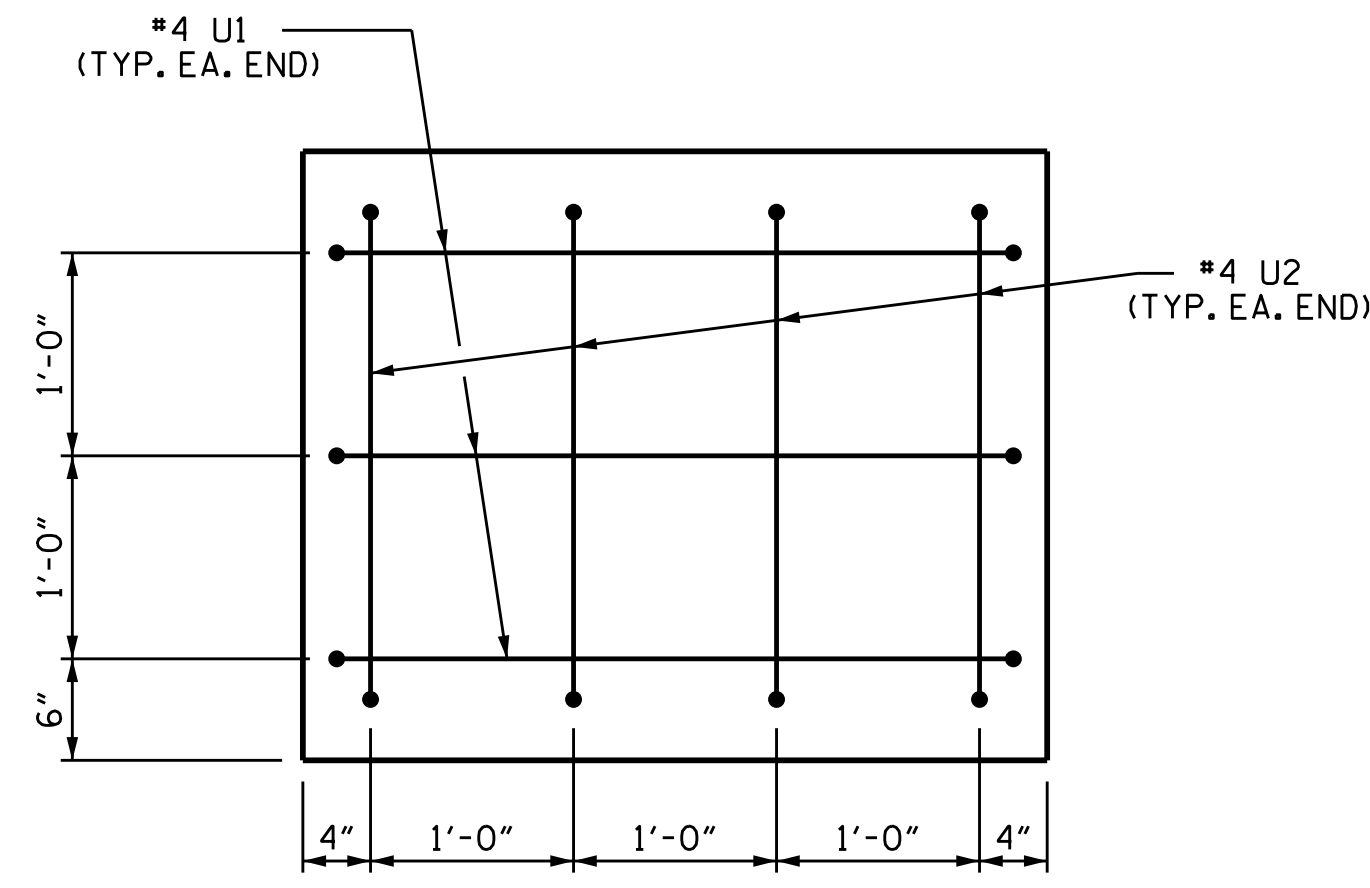
BILL OF MATERIAL FOR BENT #2					
BAR NO.	SIZE	TYPE	LENGTH	WEIGHT	
B1	#11	1	38'-2"	2028	
B2	#5	STR	35'-2"	220	
D1	#6	STR	1'-6"	99	
M1	#11	STR	40'-0"	6376	
S1	#5	2	9'-6"	595	
U1	#4	3	6'-2"	25	
U2	#4	3	5'-6"	29	
V1	#11	4	35'-7"	5672	
REINFORCING STEEL (FOR ONE BENT)				15,044	LBS.
SP-1	3	*	5	1118'-6"	3500
SP-2	3	**	6	206'-4"	413
SPIRAL COLUMN REINFORCING STEEL (FOR ONE BENT)					3913
LBS.					
* THE SP-1 SPIRAL REINFORCING STEEL SHALL BE W31 OR D-31 COLD DRAWN WIRE OR #5 PLAIN OR DEFORMED BAR					
** THE SP-2 SPIRAL REINFORCING STEEL SHALL BE W20 OR D-20 COLD DRAWN WIRE OR #4 PLAIN OR DEFORMED BAR					



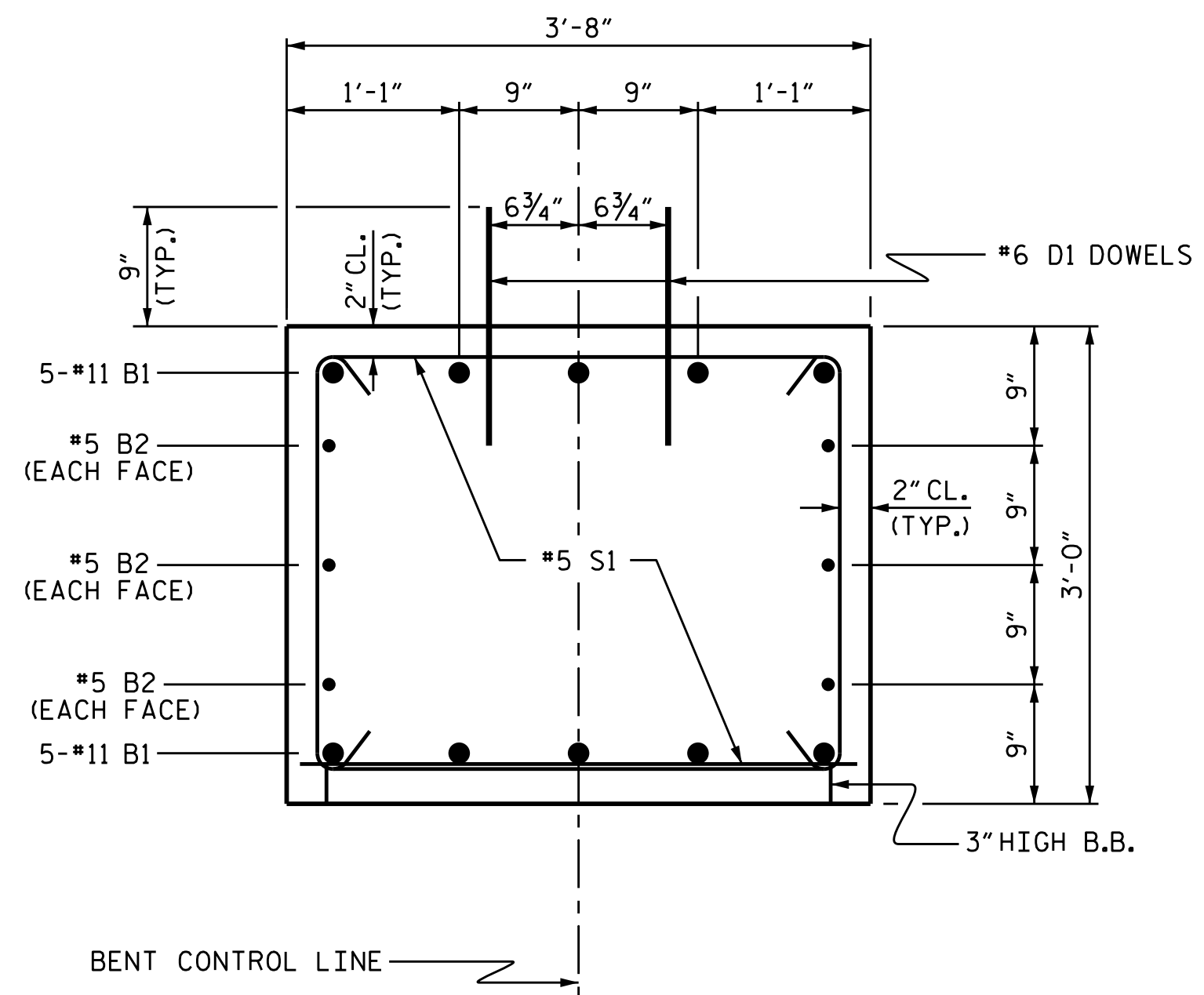
END ELEVATION



CONSTRUCTION JOINT DETAIL



END OF CAP VIEW (TYPICAL BOTH ENDS)



SECTION THRU CAP

CLASS A CONCRETE BREAKDOWN (FOR ONE BENT)	
POUR #2 (COLUMNS)	4.4 C.Y.
POUR #3 (CAP)	14.5 C.Y.
TOTAL CLASS A CONCRETE	18.9 C.Y.

DRILLED PIERS; (FOR ONE BENT)	
DRILLED PIER CONCRETE POUR #1 (DRILLED PIERS)	60.4 C.Y.
3'-6" Ø DRILLED PIER NOT IN SOIL	25.0 LIN. FT.
3'-6" Ø DRILLED PIER IN SOIL	144.5 LIN. FT.
PERMANENT STEEL CASING FOR 3'-6" Ø DRILLED PIER	142.1 LIN. FT.
CSL TUBES	696 LIN. FT.

PROJECT NO. B-5327
 PERSON _____ COUNTY _____
 STATION: 13+62.50 -L-
 SHEET 2 OF 2



STATE OF NORTH CAROLINA DEPARTMENT OF TRANSPORTATION RALEIGH				
SUBSTRUCTURE BENT 2				
NO.	BY:	DATE:	NO.	DATE:
1			3	
2			4	

ASSEMBLED BY: William F. Parker DATE: 08/2016
 CHECKED BY: A. SORSENGINH DATE: 10/2016
 DRAWN BY: DGE 3/10
 CHECKED BY: MKT 3/10
 REV. 11/14 MAA/TMG

DOCUMENT NOT CONSIDERED FINAL UNLESS ALL SIGNATURES COMPLETED