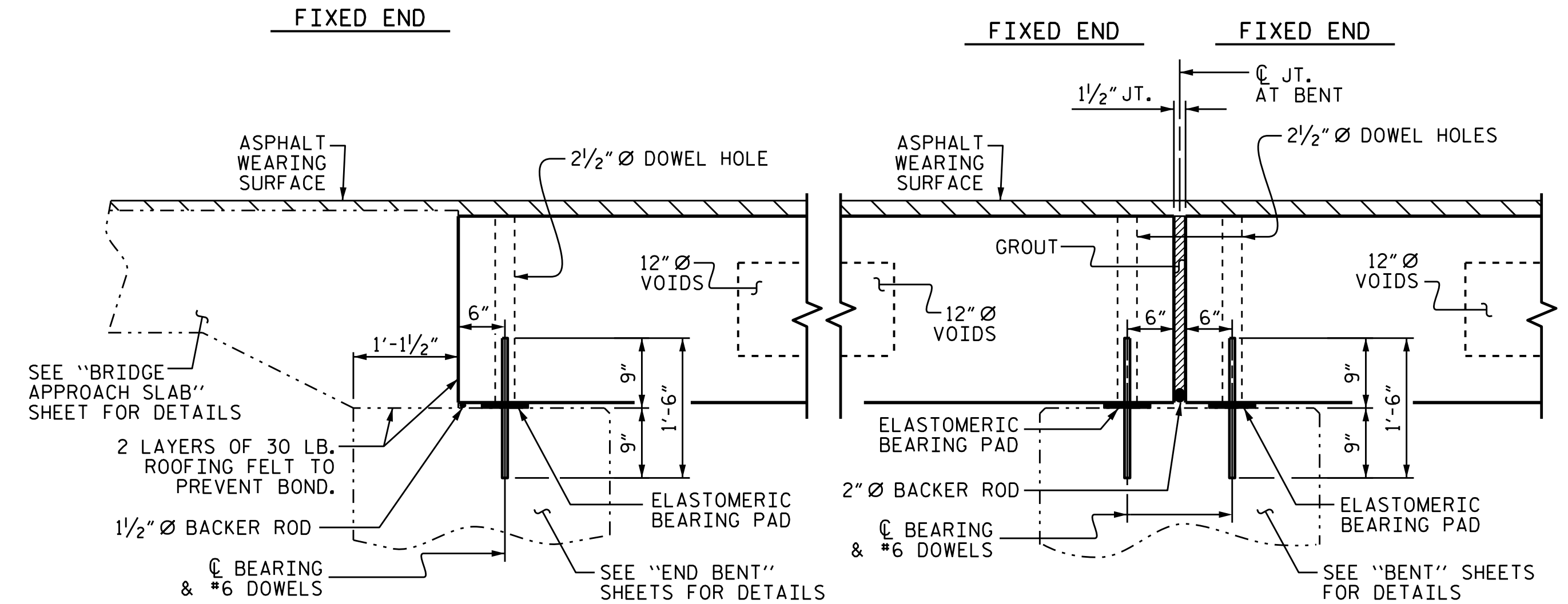


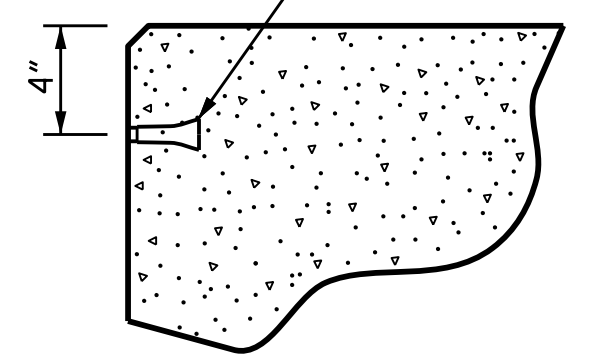
HALF SECTION AT INTERMEDIATE DIAPHRAGMS      **TYPICAL SECTION**      HALF SECTION THROUGH VOIDS

\* - THE MAXIMUM BARRIER RAIL HEIGHT AND ASPHALT THICKNESS IS SHOWN. THE HEIGHT OF THE BARRIER RAIL AND ASPHALT THICKNESS VARIES WHILE THE TOP OF THE BARRIER RAIL FOLLOWS THE PROFILE OF THE GUTTERLINE. FOR RAIL HEIGHT DETAILS AND ASPHALT THICKNESS, SEE THE "VERTICAL CONCRETE BARRIER RAIL SECTION" DETAIL.

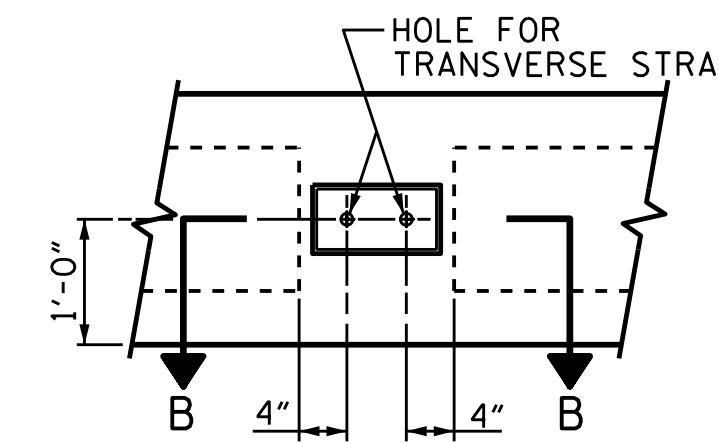


SECTION AT END BENT      SECTION AT BENT

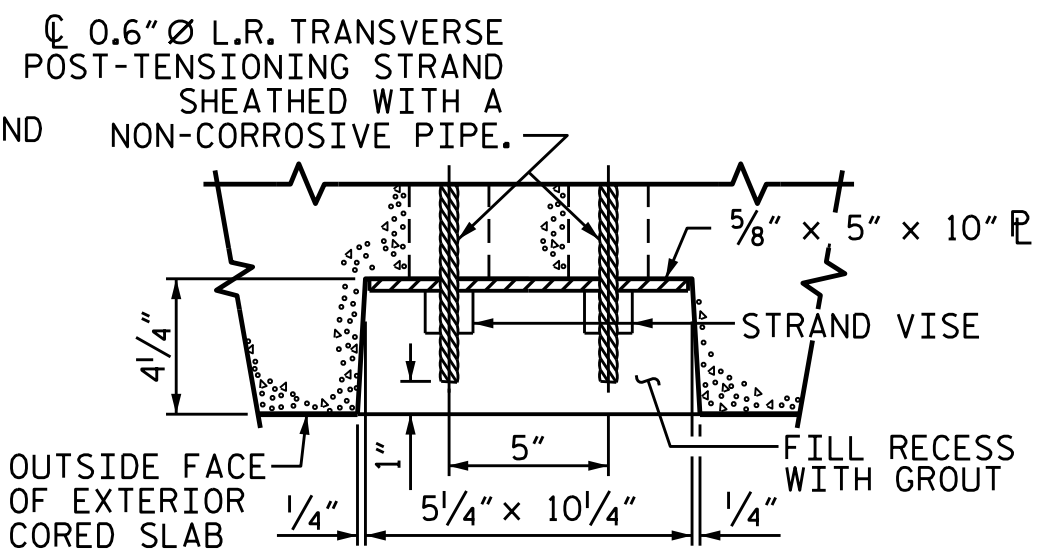
PERMITTED THREADED INSERT CAST IN OUTSIDE FACE OF EXTERIOR UNIT AND RECESSED 3/8" SIZE TO BE DETERMINED BY CONTRACTOR.



THREADED INSERT DETAIL

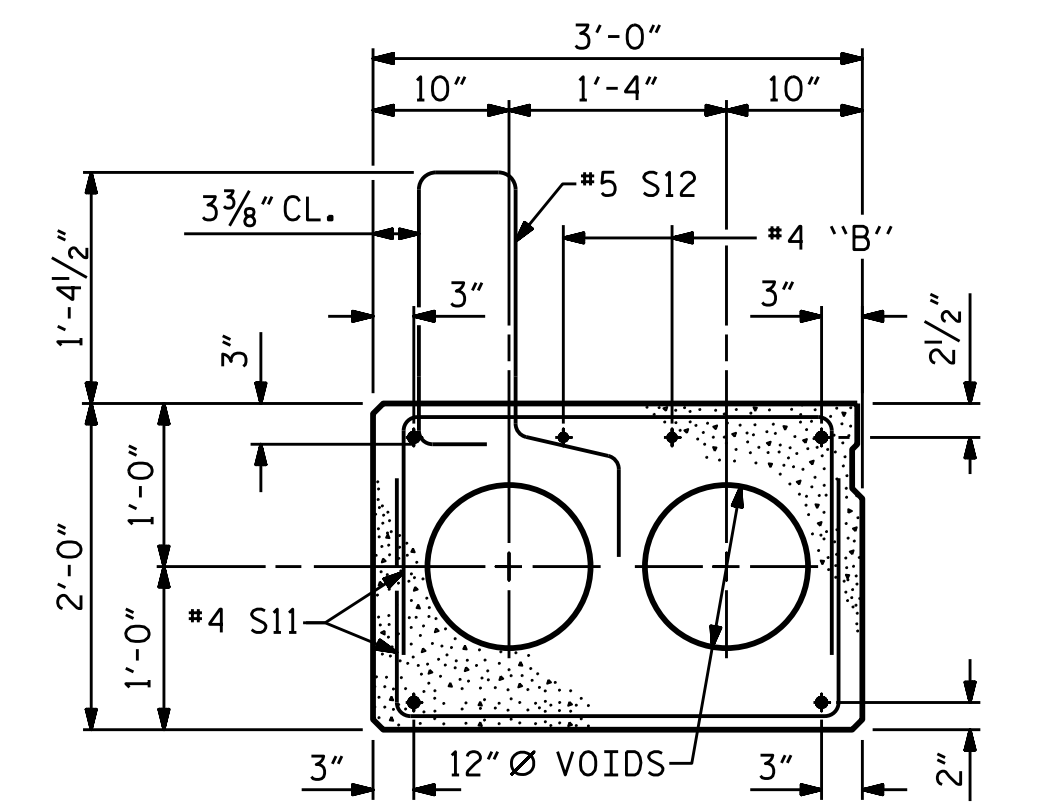


ELEVATION VIEW

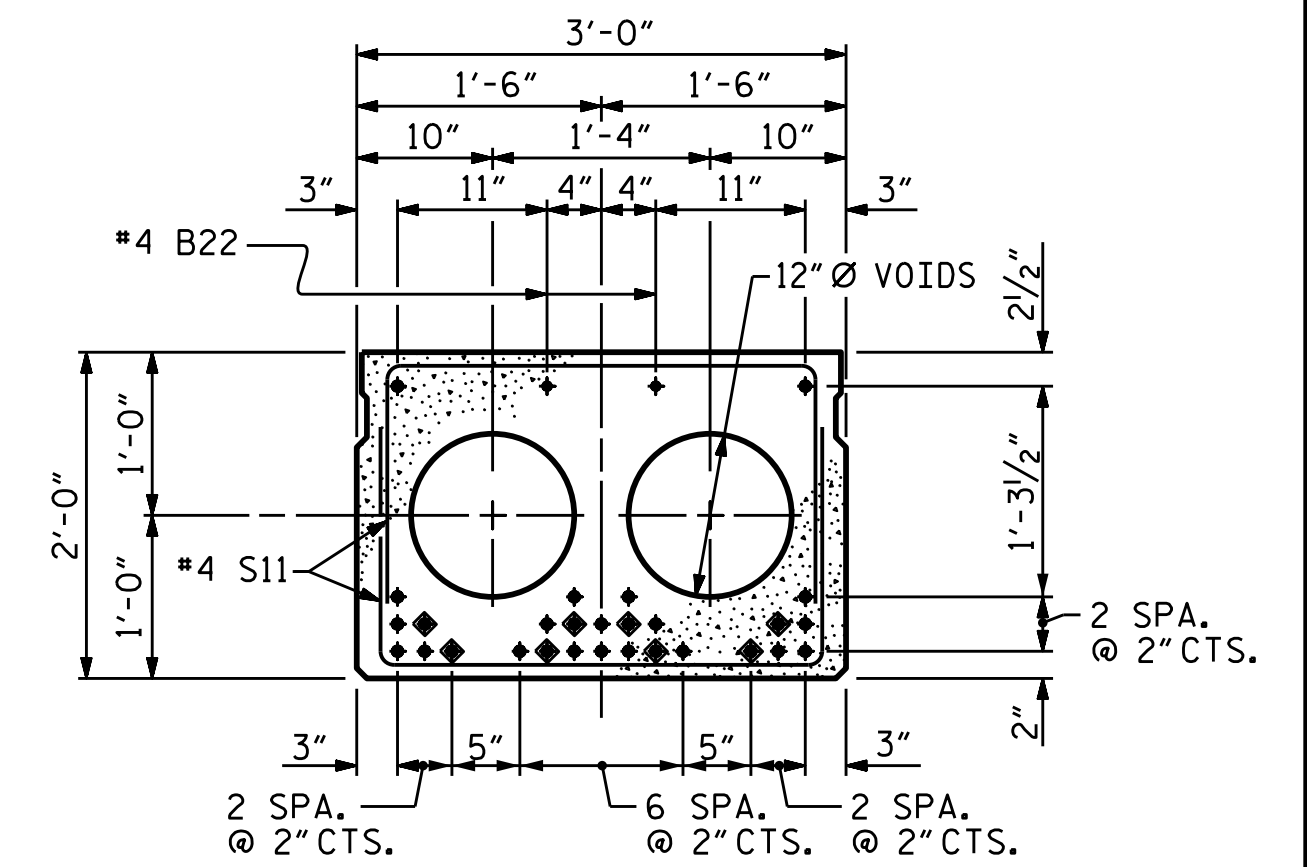


SECTION B-B

**GROUTED RECESS AT END OF POST-TENSIONED STRAND-CORED SLABS**



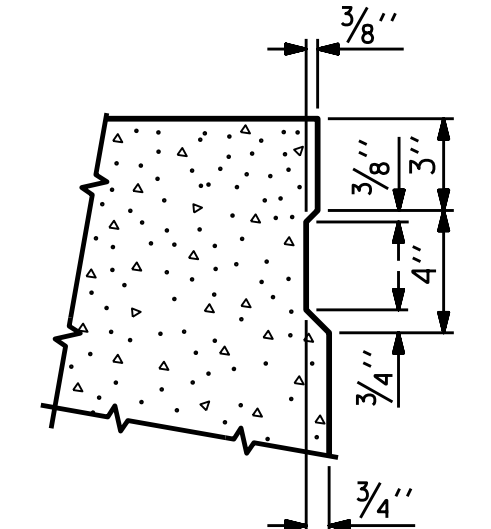
EXTERIOR SLAB SECTION (FOR PRESTRESSED STRAND LAYOUT, SEE INTERIOR SLAB SECTION.)



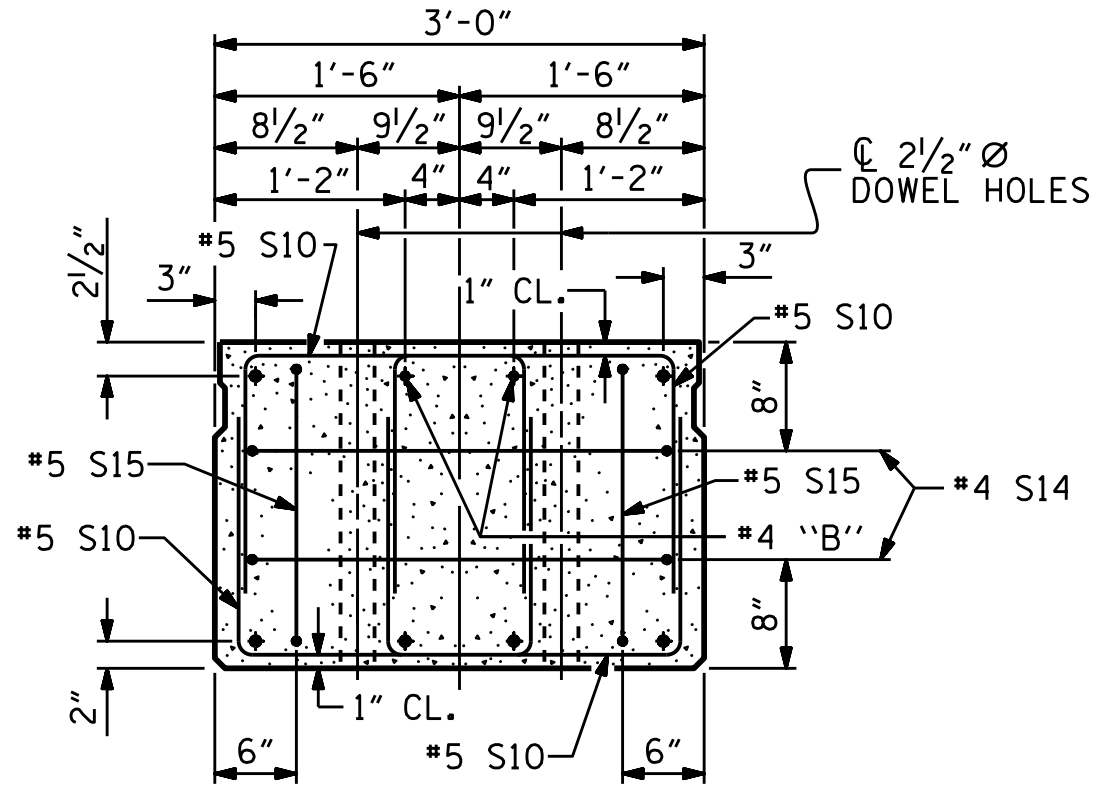
INTERIOR SLAB SECTION (70' UNIT) (28 STRANDS REQUIRED) 0.6" Ø LOW RELAXATION STRAND LAYOUT

◆ BOND SHALL BE BROKEN ON THESE STRANDS FOR A DISTANCE OF 12'-0" FROM END OF CORED SLAB UNIT. SEE STANDARD SPECIFICATIONS, ARTICLE 1078-7.

**DEBONDING LEGEND**



SHEAR KEY DETAIL NOTE: OMIT SHEAR KEY ON OUTSIDE FACE OF EXTERIOR CORED SLABS.



END ELEVATION

SHOWING PLACEMENT OF DOUBLE STIRRUPS AND LOCATION OF DOWEL HOLES. (STRAND LAYOUT NOT SHOWN). INTERIOR SLAB UNIT SHOWN-EXTERIOR SLAB UNIT SIMILAR EXCEPT SHEAR KEY LOCATION.

PROJECT NO. B-5327  
PERSON \_\_\_\_\_ COUNTY \_\_\_\_\_  
STATION: 13+62.50 -L-

SHEET 1 OF 3



STATE OF NORTH CAROLINA  
DEPARTMENT OF TRANSPORTATION  
RALEIGH  
STANDARD  
3'-0" X 2'-0"  
PRESTRESSED CONCRETE  
CORED SLAB UNIT

ASSEMBLED BY: <i>William J. Parker</i>	DATE: 08/2016
CHECKED BY: A. SORSENGIN	DATE: 10/2016
DRAWN BY: MAA	6/10
CHECKED BY: MKT	7/10
REV. 9/14	MAA/TMG

DOCUMENT NOT CONSIDERED FINAL UNLESS ALL SIGNATURES COMPLETED

REVISIONS		SHEET NO.
NO.	DATE	BY
1		3
2		4

S-5  
TOTAL SHEETS 18