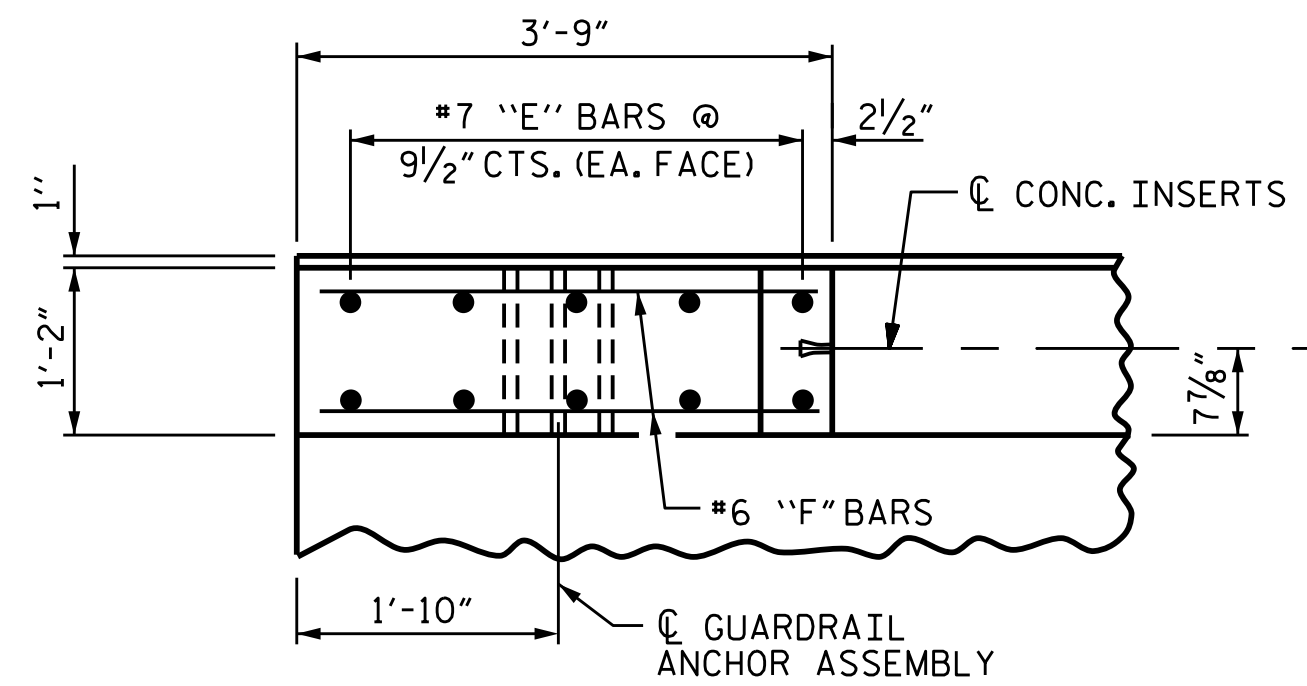
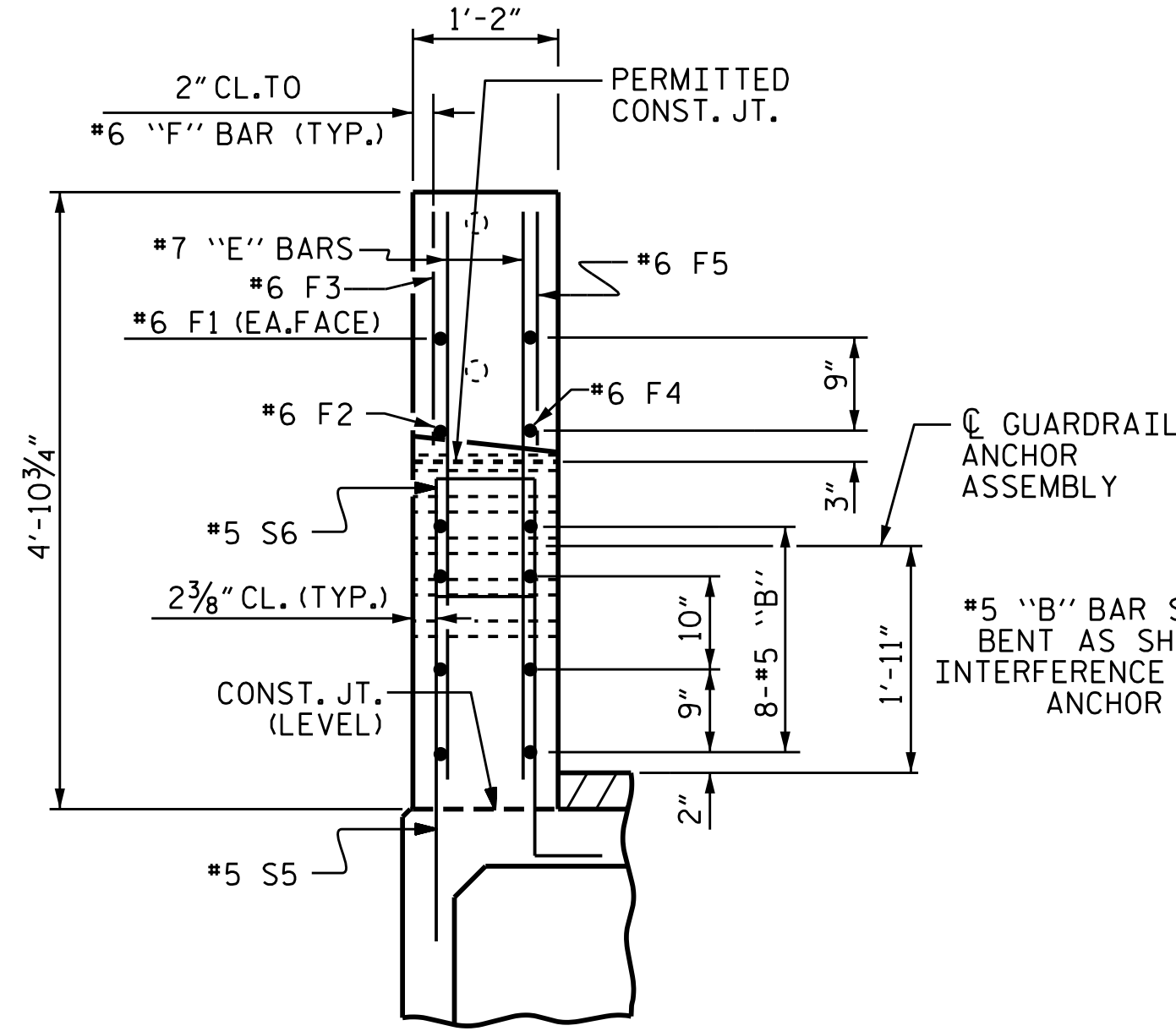


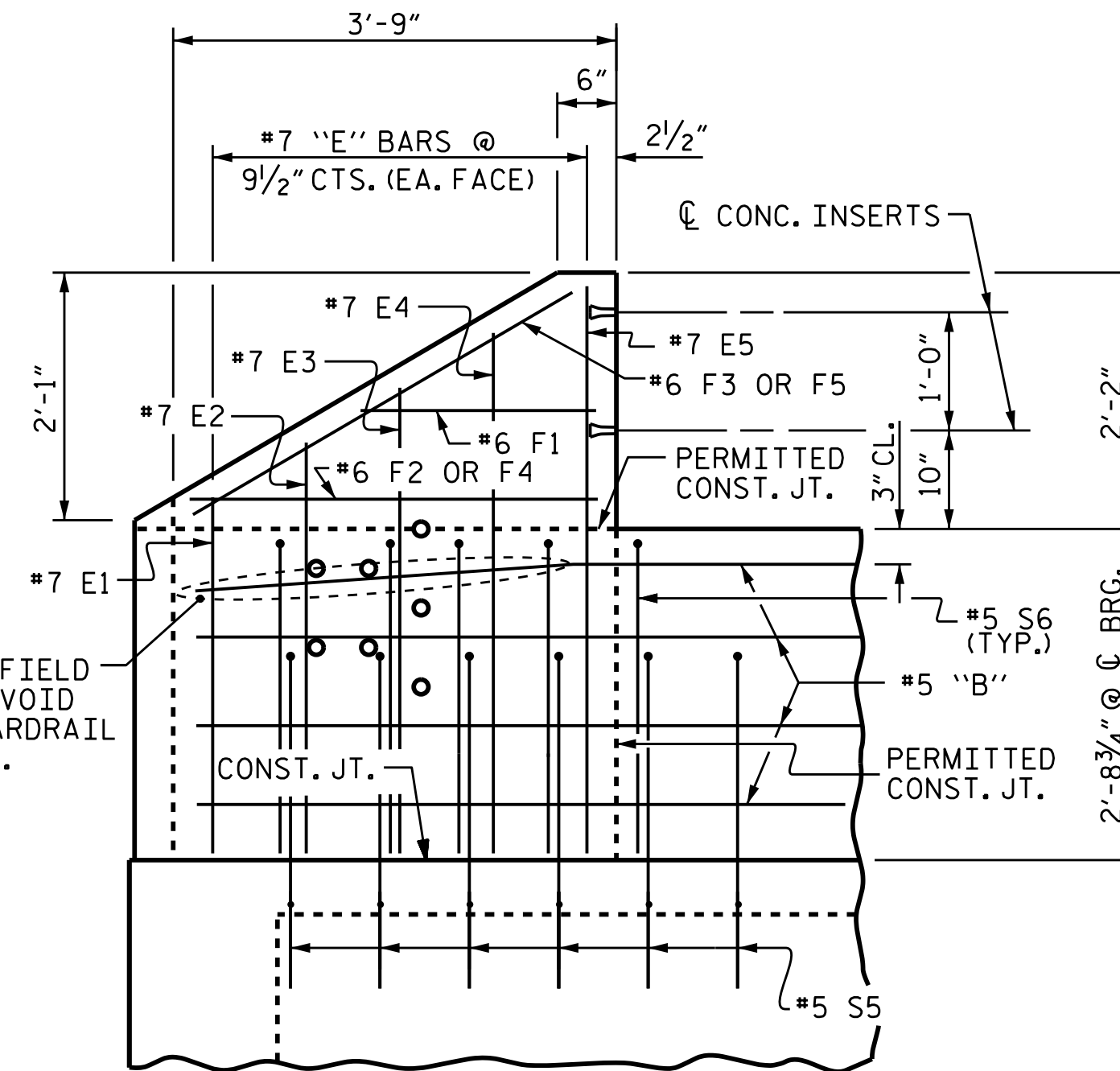
PLAN OF PARAPET



PLAN OF END POST

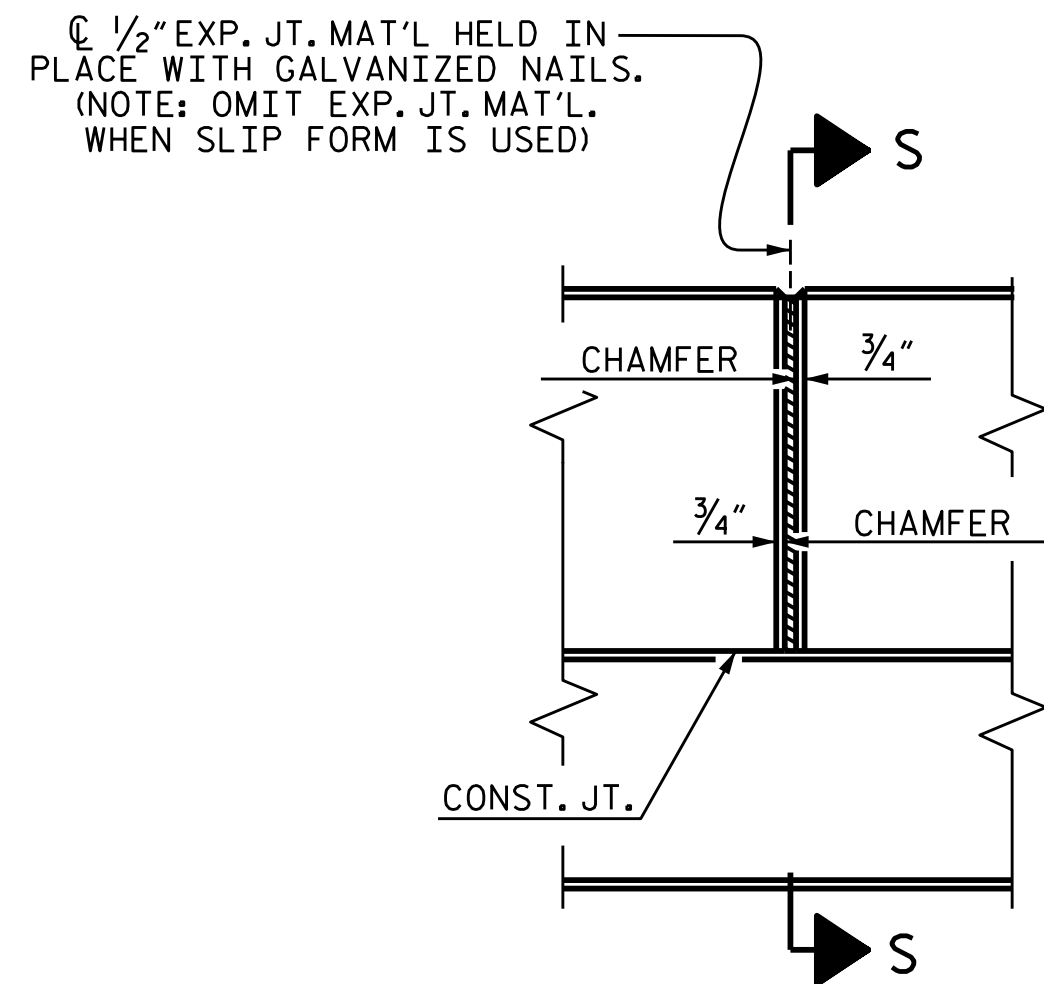


END VIEW

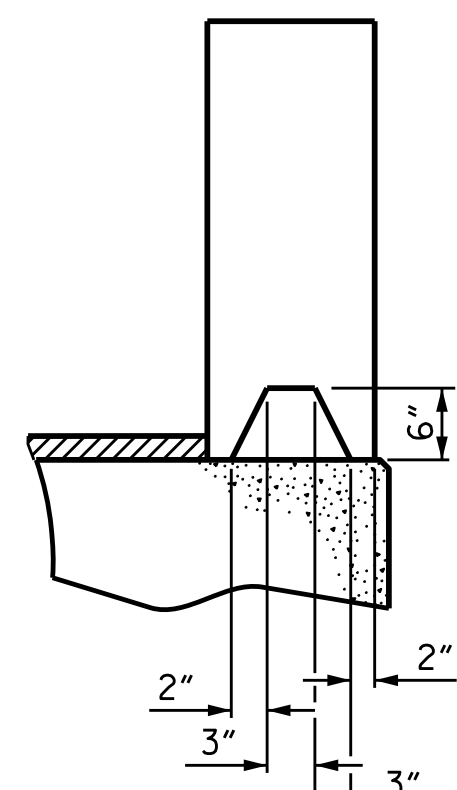


ELEVATION

PARAPET AND END POST FOR TWO-BAR RAIL



ELEVATION AT EXPANSION JOINTS



SECTION S-S  
AT DAM IN OPEN JOINT  
(THIS IS TO BE USED ONLY  
WHEN SLIP FORM IS USED)

PARAPET DETAILS

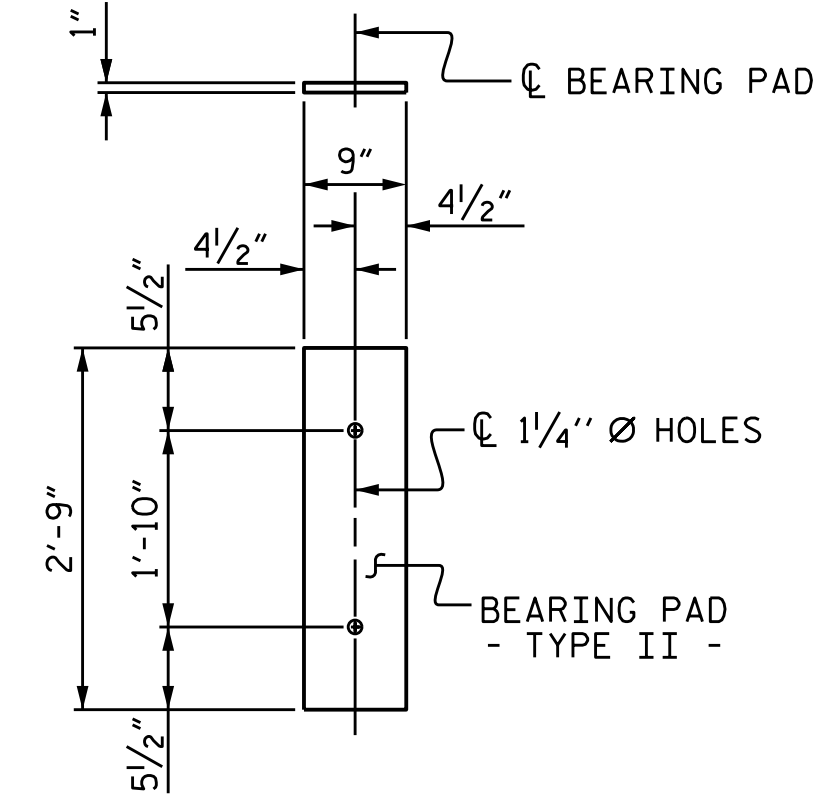
NOTES

ALL REINFORCING STEEL IN THE PARAPETS AND END POSTS SHALL BE EPOXY COATED.

#5 S5 BARS ARE INCLUDED IN THE BILL OF MATERIAL FOR BOX BEAM UNITS.

GROOVED CONTRACTION JOINTS, 1/2" IN DEPTH, SHALL BE TOOLED IN ALL EXPOSED FACES OF THE PARAPET AND IN ACCORDANCE WITH ARTICLE 825-10(B) OF THE STANDARD SPECIFICATIONS. A CONTRACTION JOINT SHALL BE LOCATED AT EACH THIRD POINT BETWEEN PARAPET EXPANSION JOINTS. ONLY ONE CONTRACTION JOINT IS REQUIRED AT MIDPOINT OF PARAPET SEGMENTS LESS THAN 20 FEET IN LENGTH AND NO CONTRACTION JOINTS ARE REQUIRED FOR THOSE SEGMENTS LESS THAN 10 FEET IN LENGTH.

THE 1/2" EXPANSION JOINT IN THE PARAPET MAY BE SHIFTED SLIGHTLY IN ORDER TO MAINTAIN A 2" MINIMUM CLEARANCE TO THE #5 S5 & #5 S6 BARS.



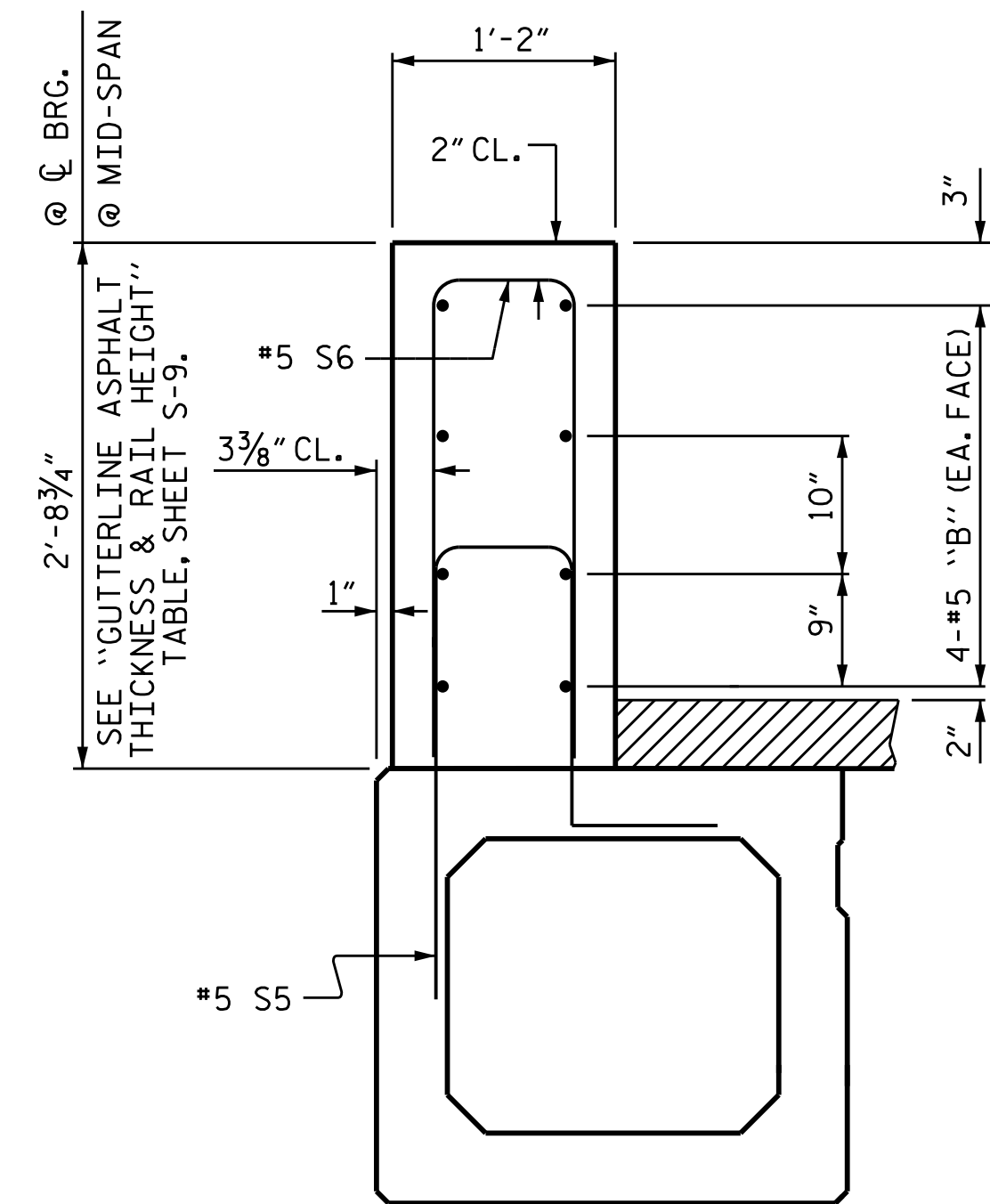
FIXED END  
(TYPE II - 24 REQ'D)

ELASTOMERIC BEARING DETAILS

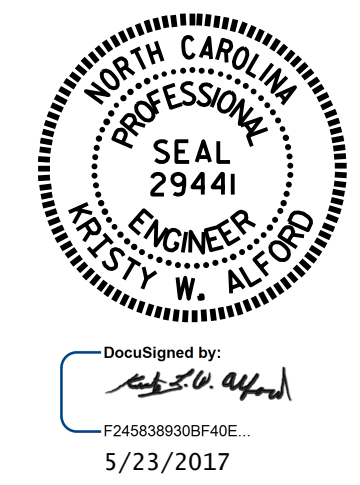
ELASTOMER IN ALL BEARINGS SHALL BE 60 DUROMETER HARDNESS.

BAR TYPE					
ALL BAR DIMENSIONS ARE OUT TO OUT					
BILL OF MATERIAL FOR PARAPETS & END POSTS					
BAR	NO.	SIZE	TYPE	LENGTH	WEIGHT
*B10	64	#5	STR	25'-2"	1680
*E1	8	#7	STR	2'-8"	44
*E2	8	#7	STR	3'-2"	52
*E3	8	#7	STR	3'-8"	60
*E4	8	#7	STR	4'-2"	68
*E5	8	#7	STR	4'-5"	72
*F1	8	#6	STR	1'-10"	22
*F2	8	#6	STR	3'-0"	36
*F3	8	#6	STR	3'-8"	44
*S6	272	#5	1	5'-8"	1608
* EPOXY COATED REINFORCING STEEL				LBS.	3,686
CLASS AA CONCRETE				CU.YDS.	24.7
1'-2" X 2'-8 3/4" CONCRETE PARAPET				LIN. FT.	204.00

GUTTERLINE ASPHALT THICKNESS & PARAPET HEIGHT		
	ASPHALT OVERLAY THICKNESS @ MID-SPAN	PARAPET HEIGHT @ MID-SPAN
102' UNITS	1 1/16"	2'-7 11/16"



SECTION THRU PARAPET



PROJECT NO. B-5348  
ORANGE COUNTY  
 STATION: 14+50.50 -L-

SHEET 5 OF 5

STATE OF NORTH CAROLINA  
 DEPARTMENT OF TRANSPORTATION  
 RALEIGH  
 SUPERSTRUCTURE  
 PARAPET  
 &  
 END POST DETAILS

REVISIONS						SHEET NO.	
NO.	BY:	DATE:	NO.	BY:	DATE:	S-9	
1			3			TOTAL SHEETS	
2			4			19	

DRAWN BY: J.D. HAWK DATE: 7/16  
 CHECKED BY: H.B. DESAI DATE: 10/16

DOCUMENT NOT CONSIDERED FINAL UNLESS ALL SIGNATURES COMPLETED