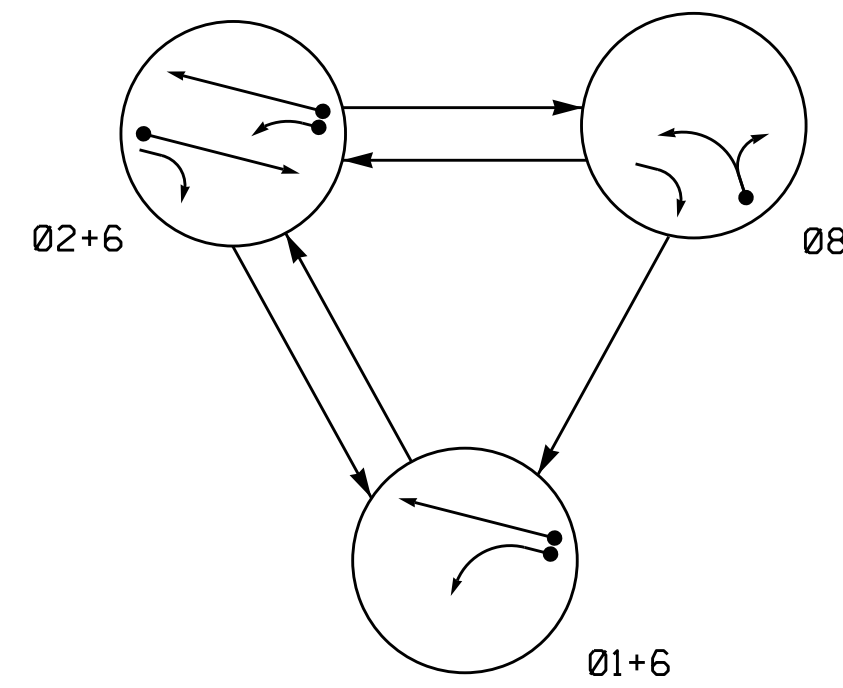


PHASING DIAGRAM



SIGNAL FACE	PHASE			
	01+6	02+6	08	FLASH
11	Y	R	Y	Y
21	R	G	R	Y
22	R	G	R	Y
61, 62	G	G	R	Y
81, 82	R	R	G	R

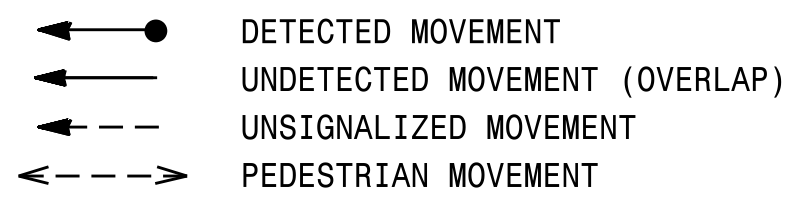
OASIS 2070 LOOP & DETECTOR INSTALLATION CHART												
LOOP	SIZE (FT)	DISTANCE FROM STOPBAR (FT)	TURNS	NEW LOOP	DETECTOR PROGRAMMING							
					PHASE	CALLING	EXTENSION	FULL TIME DELAY	STRETCH TIME	DELAY TIME	SYSTEM LOOP	NEW CARD
1A	6X40	0	2-4-2	Y	1	Y	Y	-	-	15	-	Y
					6	Y	Y	Y	-	3	-	Y
2A	6X6	420	5	Y	2	Y	Y	-	-	-	-	Y
6A	6X6	420	5	Y	6	Y	Y	-	-	-	-	Y
8A	6X40	0	2-4-2	Y	8	Y	Y	-	-	3	-	Y
					8	Y	Y	-	-	15	-	Y

3 Phase Fully Actuated (Isolated)

NOTES

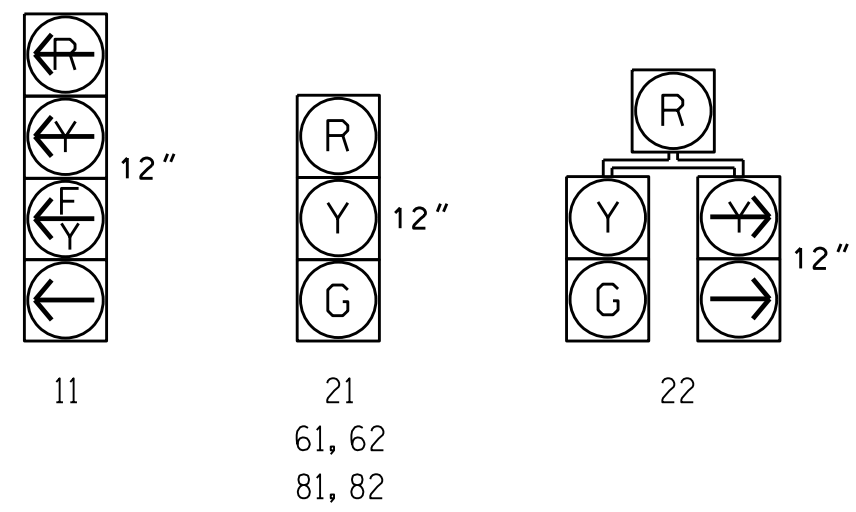
1. Refer to "Roadway Standard Drawings NCDOT" dated January 2012 and "Standard Specifications for Roads and Structures" dated January 2012.
2. Do not program signal for late night flashing operation unless otherwise directed by the Engineer.
3. Phase 1 may be lagged.
4. Set all detector units to presence mode.
5. Locate new cabinet so as not to obstruct sight distance of vehicles turning right on red.
6. Program controller to operate using FYA compact mode.
7. Locate Temporary Signal Ahead signs about 325 feet in advance of Stop Line accordance with Table 2C-4 in Section 2C.05 of the 2009 MUTCD or as otherwise directed by the Engineer.

PHASING DIAGRAM DETECTION LEGEND

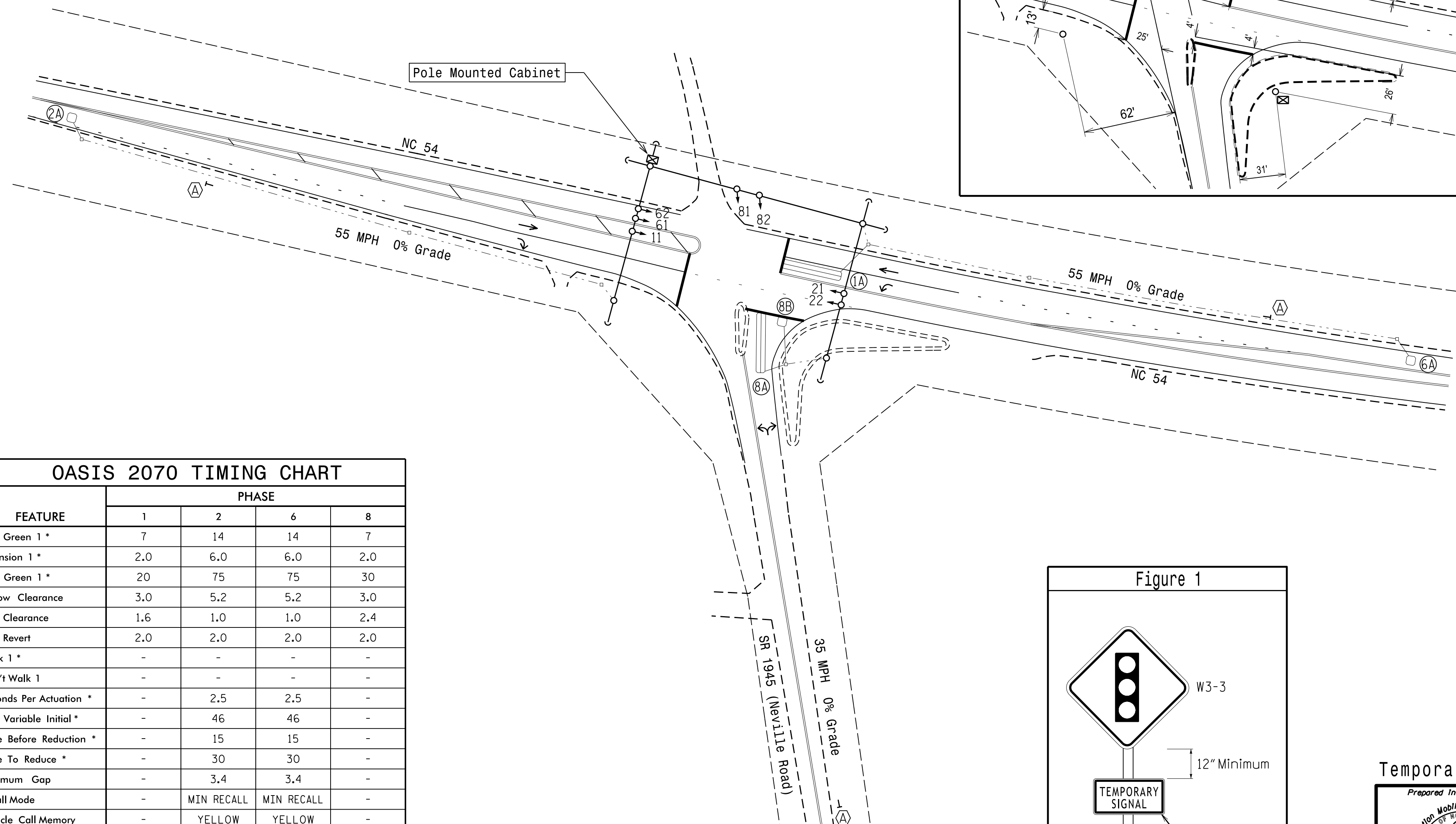
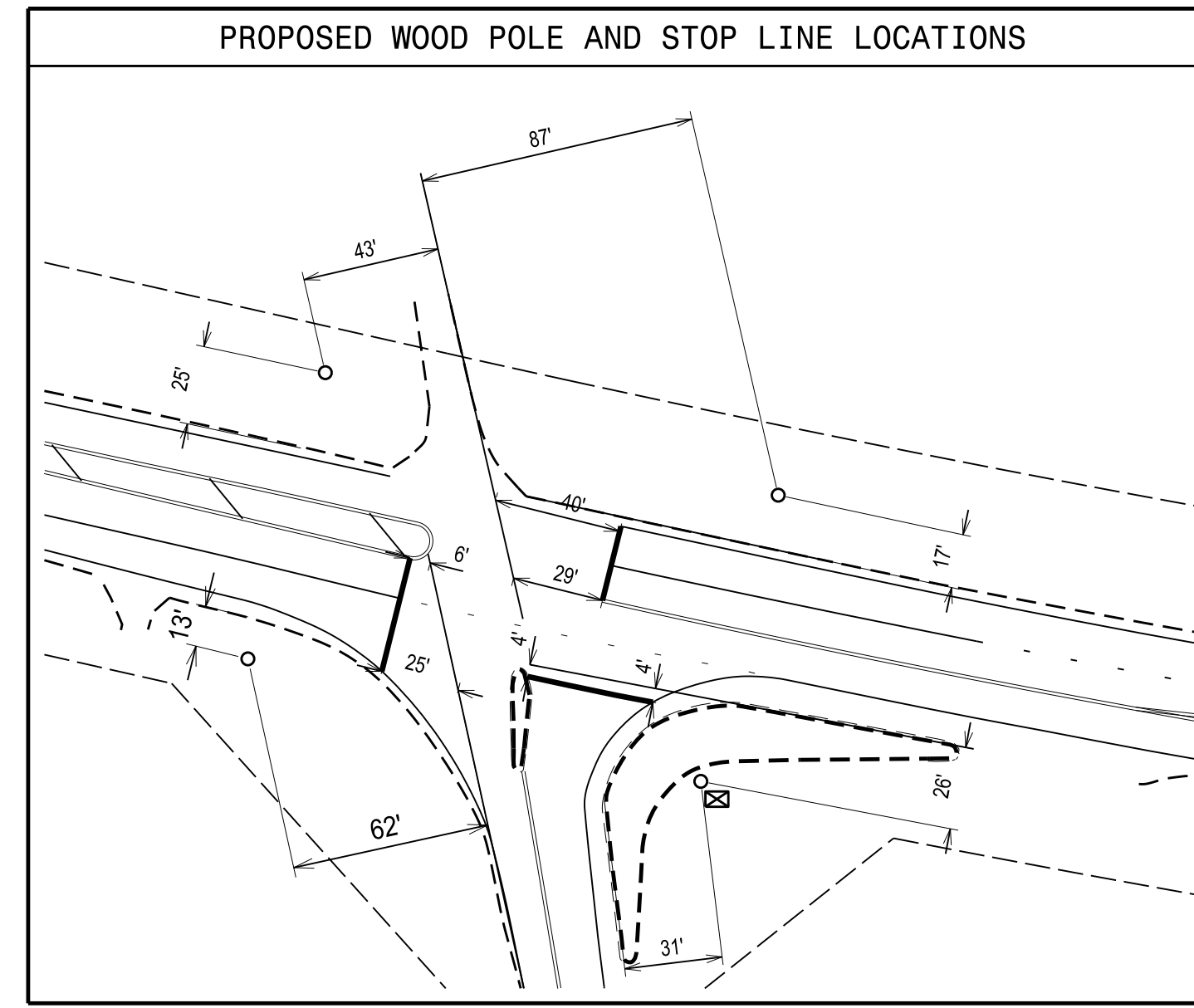


SIGNAL FACE I.D.

All Heads L.E.D.



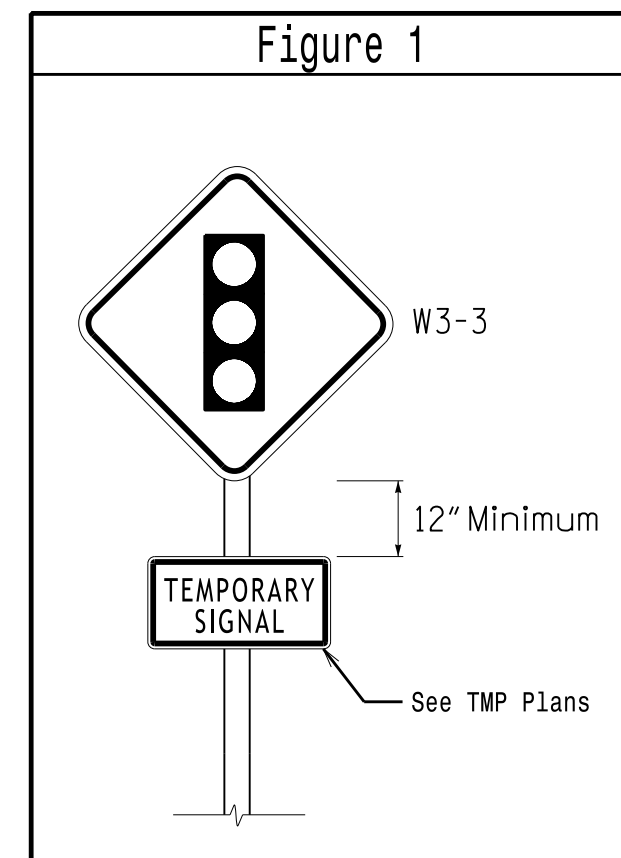
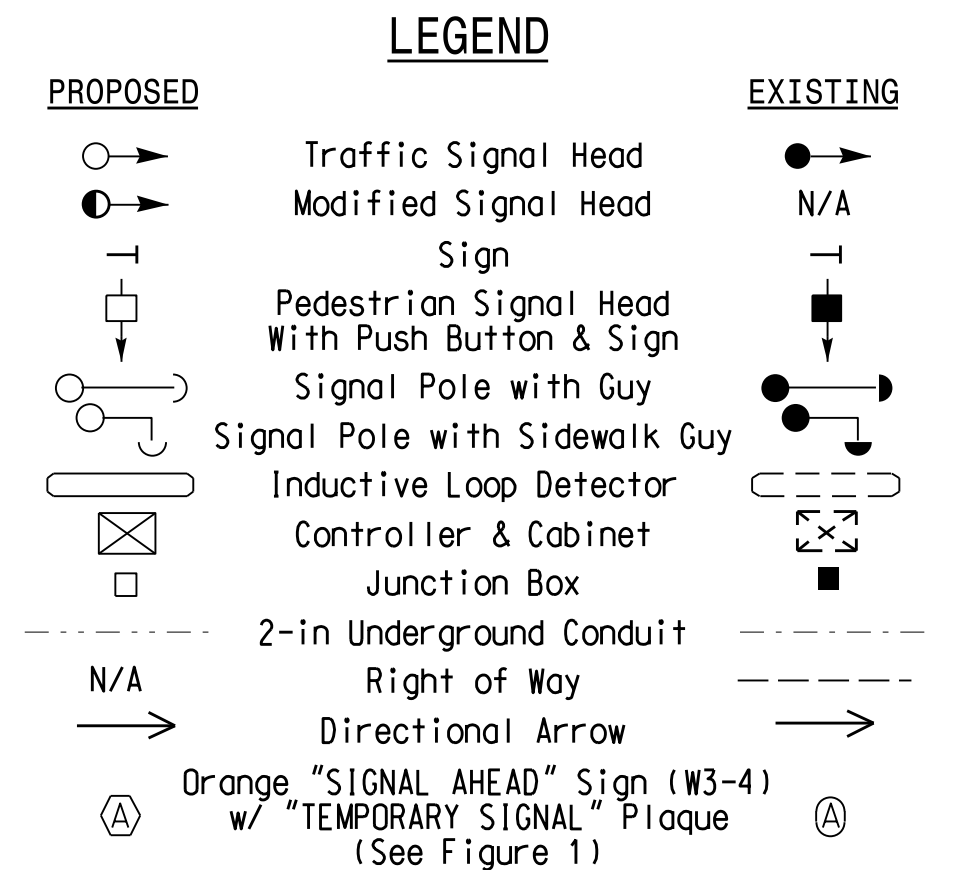
PROPOSED WOOD POLE AND STOP LINE LOCATIONS



OASIS 2070 TIMING CHART

FEATURE	PHASE			
	1	2	6	8
Min Green 1 *	7	14	14	7
Extension 1 *	2.0	6.0	6.0	2.0
Max Green 1 *	20	75	75	30
Yellow Clearance	3.0	5.2	5.2	3.0
Red Clearance	1.6	1.0	1.0	2.4
Red Revert	2.0	2.0	2.0	2.0
Walk 1 *	-	-	-	-
Don't Walk 1	-	-	-	-
Seconds Per Actuation *	-	2.5	2.5	-
Max Variable Initial *	-	46	46	-
Time Before Reduction *	-	15	15	-
Time To Reduce *	-	30	30	-
Minimum Gap	-	3.4	3.4	-
Recall Mode	-	MIN RECALL	MIN RECALL	-
Vehicle Call Memory	-	YELLOW	YELLOW	-
Dual Entry	-	-	-	-
Simultaneous Gap	ON	ON	ON	ON

* These values may be field adjusted. Do not adjust Min Green and Extension times for phases 2 and 6 lower than what is shown. Min Green for all other phases should not be lower than 4 seconds.



Temporary Signal

Prepared in the Offices of:

 750 N. Greenfield Pkwy, Garner, NC 27529

NC 54 at SR 1945 (Neville Road)
 Division 7 Orange County Near Carrboro
 PLAN DATE: March 2017 REVIEWED BY:
 PREPARED BY: I. O. Umozurike REVIEWED BY:

REVISIONS: _____ INIT. DATE

DATE: 3/23/2017
 SCALE: 1" = 50'

DOCUMENT NOT CONSIDERED FINAL UNLESS ALL SIGNATURES COMPLETED

SEAL: ROBERT J. ZIEMBA, ENGINEER, 026486

SIG. INVENTORY NO. 07-1233