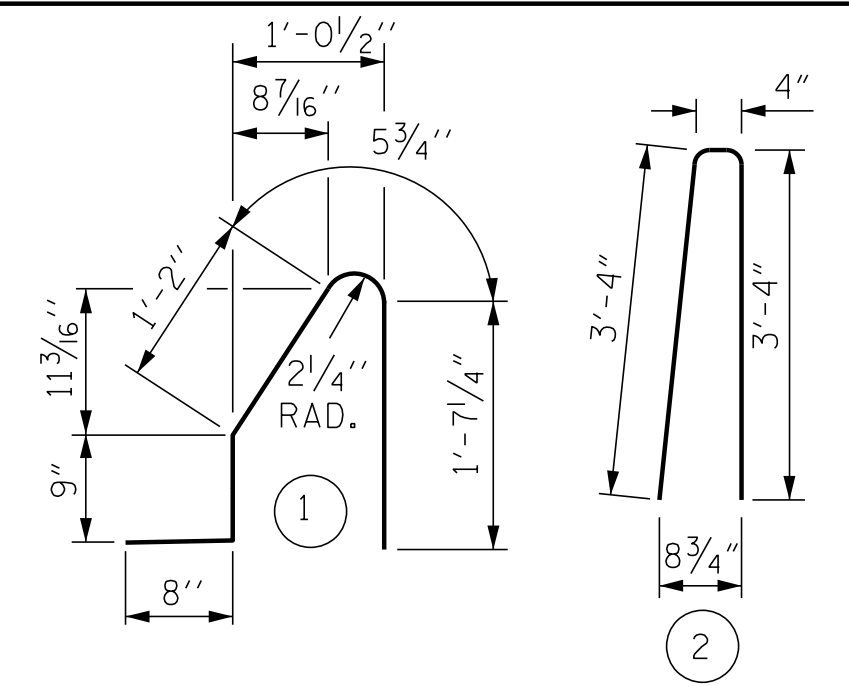


PLAN OF CONCRETE BARRIER RAIL

BAR TYPES



ALL BAR DIMENSIONS ARE OUT TO OUT

BILL OF MATERIAL

FOR CONCRETE BARRIER RAIL ONLY

BAR	NO.	SIZE	TYPE	LENGTH	WEIGHT
* S1	434	#5	1	4'-8"	2112
* S2	434	#5	2	7'-0"	3169
* B1	88	#5	STR	15'-5"	1415
* B2	132	#5	STR	26'-7"	3660

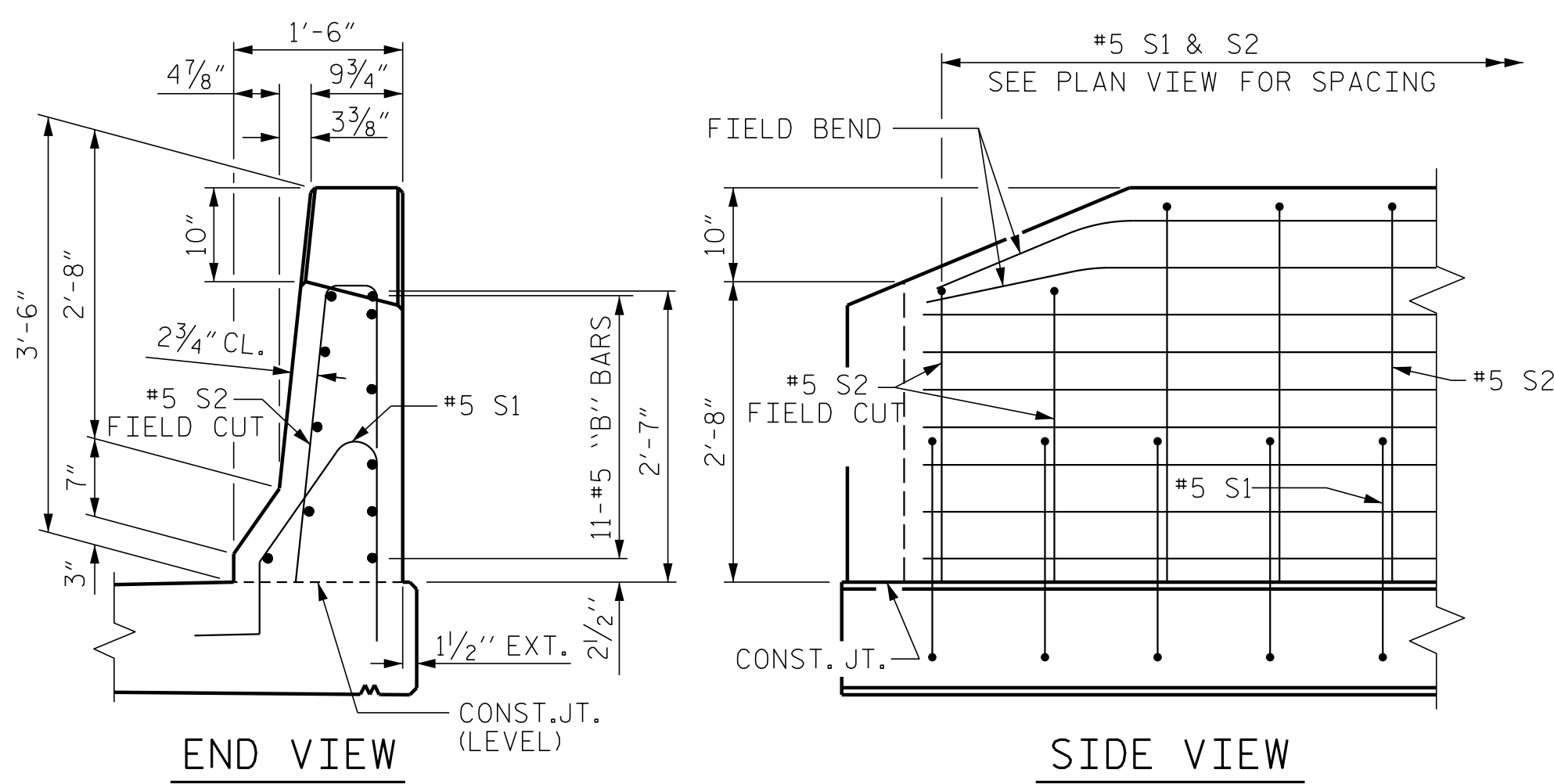
* EPOXY COATED REINFORCING STEEL 10,356 LBS.
 CLASS AA CONCRETE 58.9 CU. YDS.
 CONCRETE BARRIER RAIL 433.54 LTN. FT.

NOTES

THE BARRIER RAIL IN A CONTINUOUS UNIT SHALL NOT BE CAST UNTIL ALL SLAB CONCRETE IN THAT UNIT HAS BEEN CAST AND HAS REACHED A MINIMUM COMPRESSIVE STRENGTH OF 3,000 PSI.

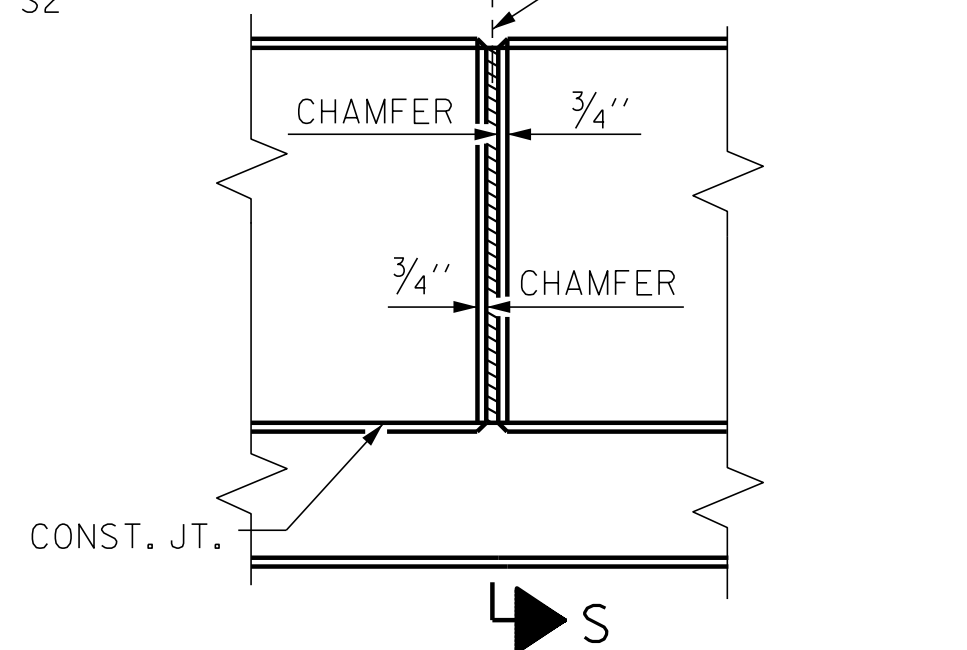
ALL REINFORCING STEEL IN BARRIER RAILS SHALL BE EPOXY COATED.

GROOVED CONTRACTION JOINTS, 1/2" IN DEPTH, SHALL BE TOOLED IN ALL EXPOSED FACES OF THE BARRIER RAIL AND IN ACCORDANCE WITH ARTICLE 825-10(B) OF THE STANDARD SPECIFICATIONS. THE CONTRACTION JOINT SHALL BE LOCATED AT EACH THIRD POINT BETWEEN BARRIER RAIL EXPANSION JOINTS. ONLY ONE CONTRACTION JOINT IS REQUIRED AT MIDPOINT OF BARRIER RAIL SEGMENTS LESS THAN 20 FEET IN LENGTH AND NO CONTRACTION JOINTS ARE REQUIRED FOR THOSE SEGMENTS LESS THAN 10 FEET IN LENGTH.

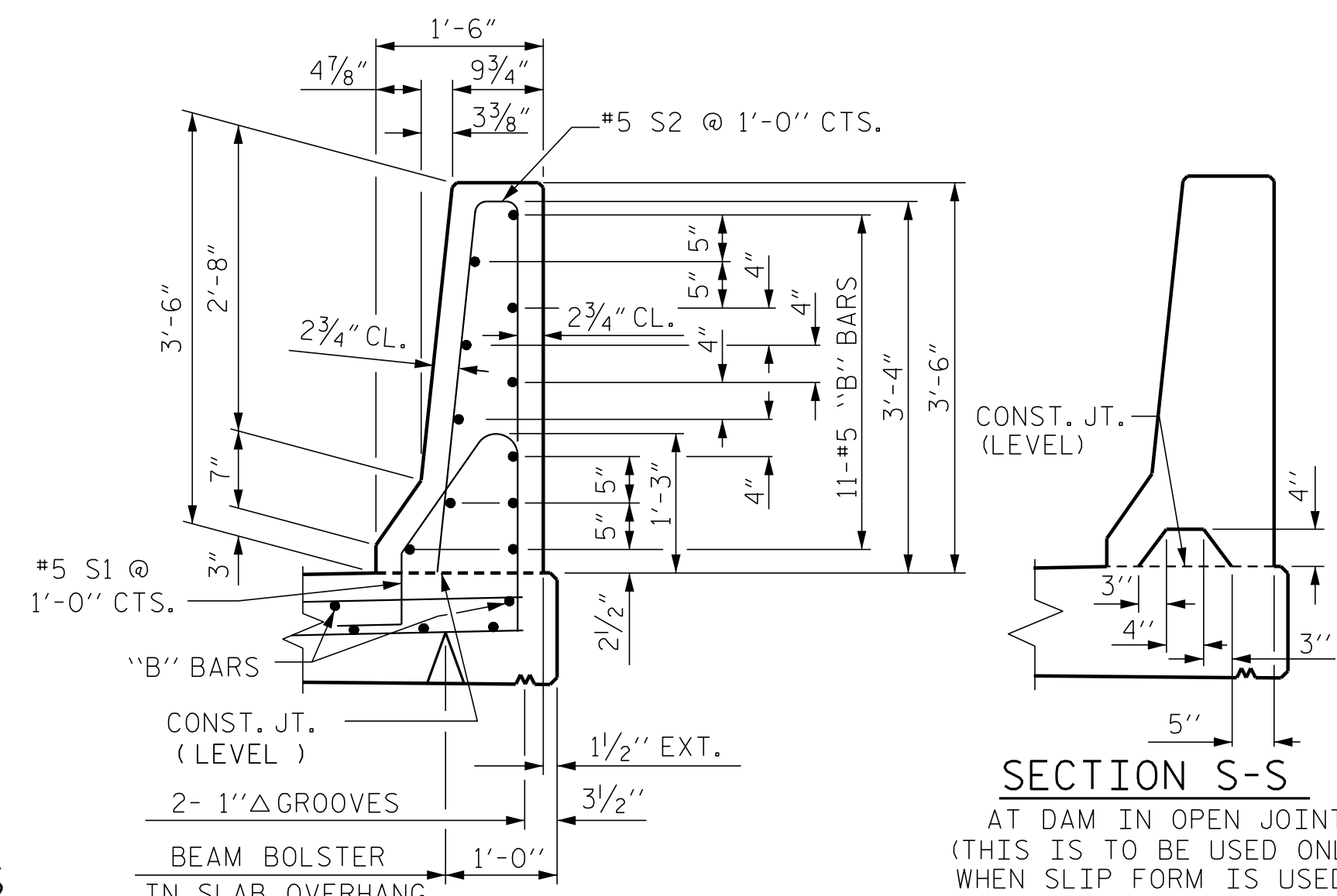


END OF RAIL DETAILS

1/2" EXP. JT. MAT'L. HELD IN PLACE WITH GALVANIZED NAILS. (NOTE: OMIT EXP. JT. MAT'L. WHEN SLIP FORM IS USED.)

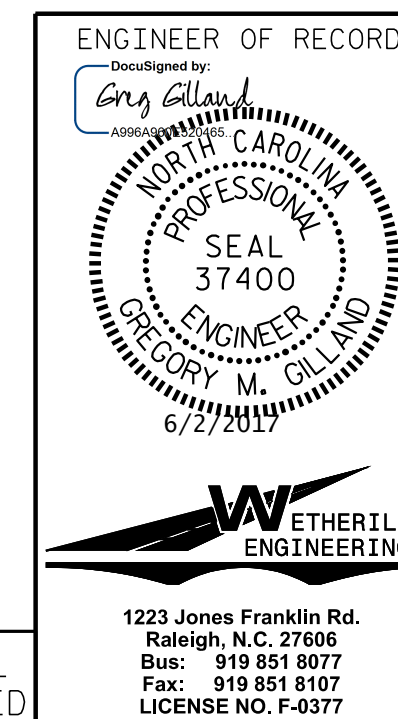


BARRIER RAIL DETAILS



SECTION S-S AT DAM IN OPEN JOINT (THIS IS TO BE USED ONLY WHEN SLIP FORM IS USED)

PROJECT NO. I-5786
 JOHNSTON COUNTY
 STATION: 20+25.64 -Y4-



STATE OF NORTH CAROLINA DEPARTMENT OF TRANSPORTATION RALEIGH

CONCRETE BARRIER RAIL

REVISIONS

NO.	BY:	DATE:	NO.	BY:	DATE:
1			3		
2			4		

SHEET NO. S02-17
 TOTAL SHEETS 31

DRAWN BY: D. HODGE DATE: 4/17
 CHECKED BY: B.C. HUNT DATE: 4/17

DOCUMENT NOT CONSIDERED FINAL UNLESS ALL SIGNATURES COMPLETED