

STRUCTURAL STEEL NOTES :

ALL STRUCTURAL STEEL SHALL BE AASHTO M270 GRADE 50W AND PAINTED IN ACCORDANCE WITH SYSTEM 4 OF ARTICLE 442-8 OF THE STANDARD SPECIFICATIONS UNLESS OTHERWISE NOTED ON THE PLANS.

ALL DIMENSIONS SHOWN ARE HORIZONTAL OR VERTICAL, UNLESS OTHERWISE NOTED.

ALL FIELD CONNECTIONS TO BE 7/8" DIA. HIGH STRENGTH BOLTS UNLESS OTHERWISE NOTED.

BEARING STIFFENERS ARE TO BE PLACED NORMAL TO THE WEB OF THE GIRDER AND SHALL BE PLUMB.

PERMITTED FLANGE AND WEB SHOP SPLICES SHALL NOT BE LOCATED WITHIN 15 FEET OF MAXIMUM DEAD LOAD DEFLECTION (NOR WITHIN 15 FEET OF INTERMEDIATE BEARINGS OF CONTINUOUS UNITS). KEEP 2 FEET MINIMUM BETWEEN WEB AND FLANGE SHOP SPLICES. KEEP 6" MINIMUM BETWEEN CONNECTOR PLATE OR TRANSVERSE STIFFENER WELDS AND WEB OR FLANGE SHOP SPLICES.

STUDS ON GIRDERS MAY BE SHIFTED UP TO 1" IF NECESSARY TO CLEAR FLANGE SPLICE WELD.

TENSION ON THE ASTM A325 BOLTS SHALL BE CALIBRATED USING DIRECT TENSION INDICATOR WASHERS IN ACCORDANCE WITH ARTICLE 440-8 OF THE STANDARD SPECIFICATIONS.

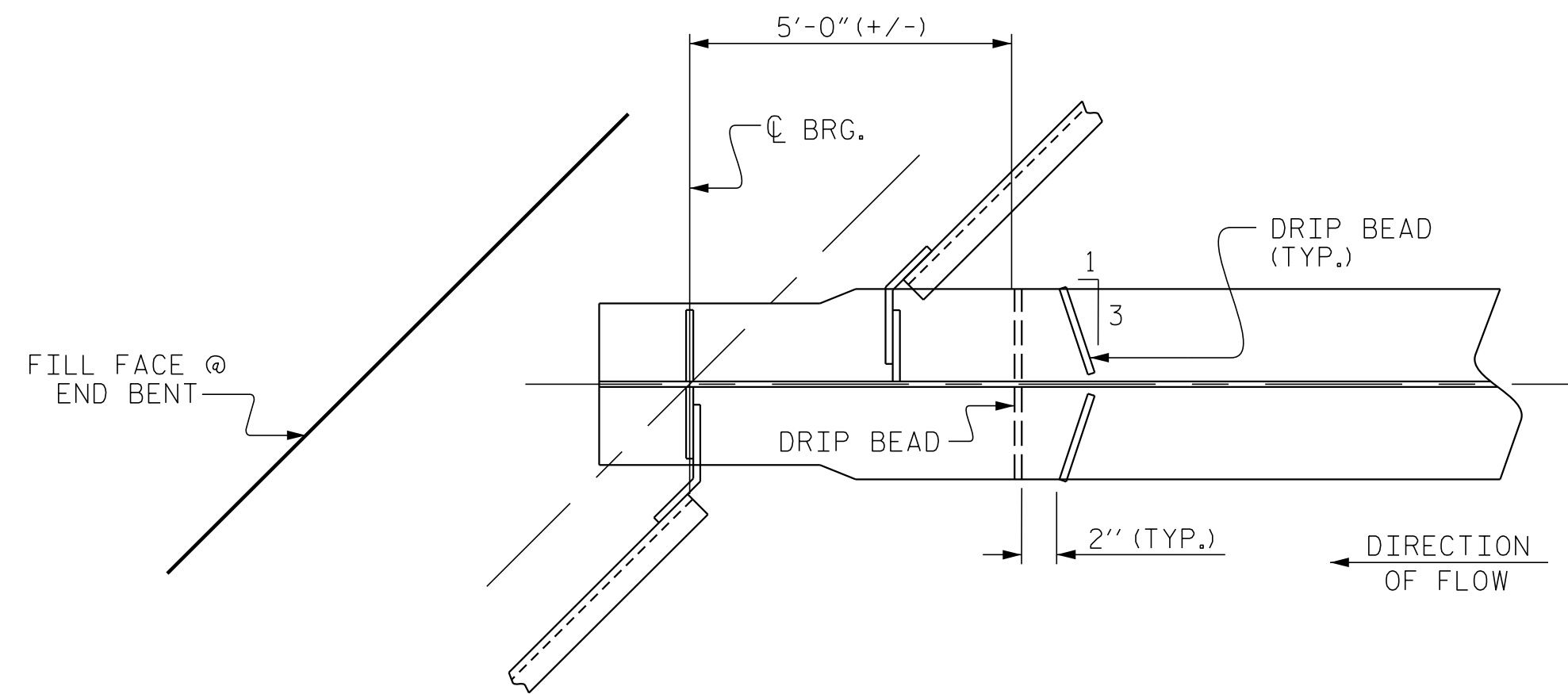
AT THE CONTRACTOR'S OPTION, THE DIAPHRAGM WITH THE WELDED GUSSET PLATES MAY BE USED IN LIEU OF THE DIAPHRAGM WITH BOLTED ANGLES AT NO ADDITIONAL COST TO THE DEPARTMENT.

FABRICATORS SHALL DETAIL DIAPHRAGM MEMBERS AND CONNECTIONS FOR STEEL DEAD LOAD FIT UP. GIRDERS SHALL BE PLUMB AFTER THE FULL AMOUNT OF DEAD LOAD IS APPLIED.

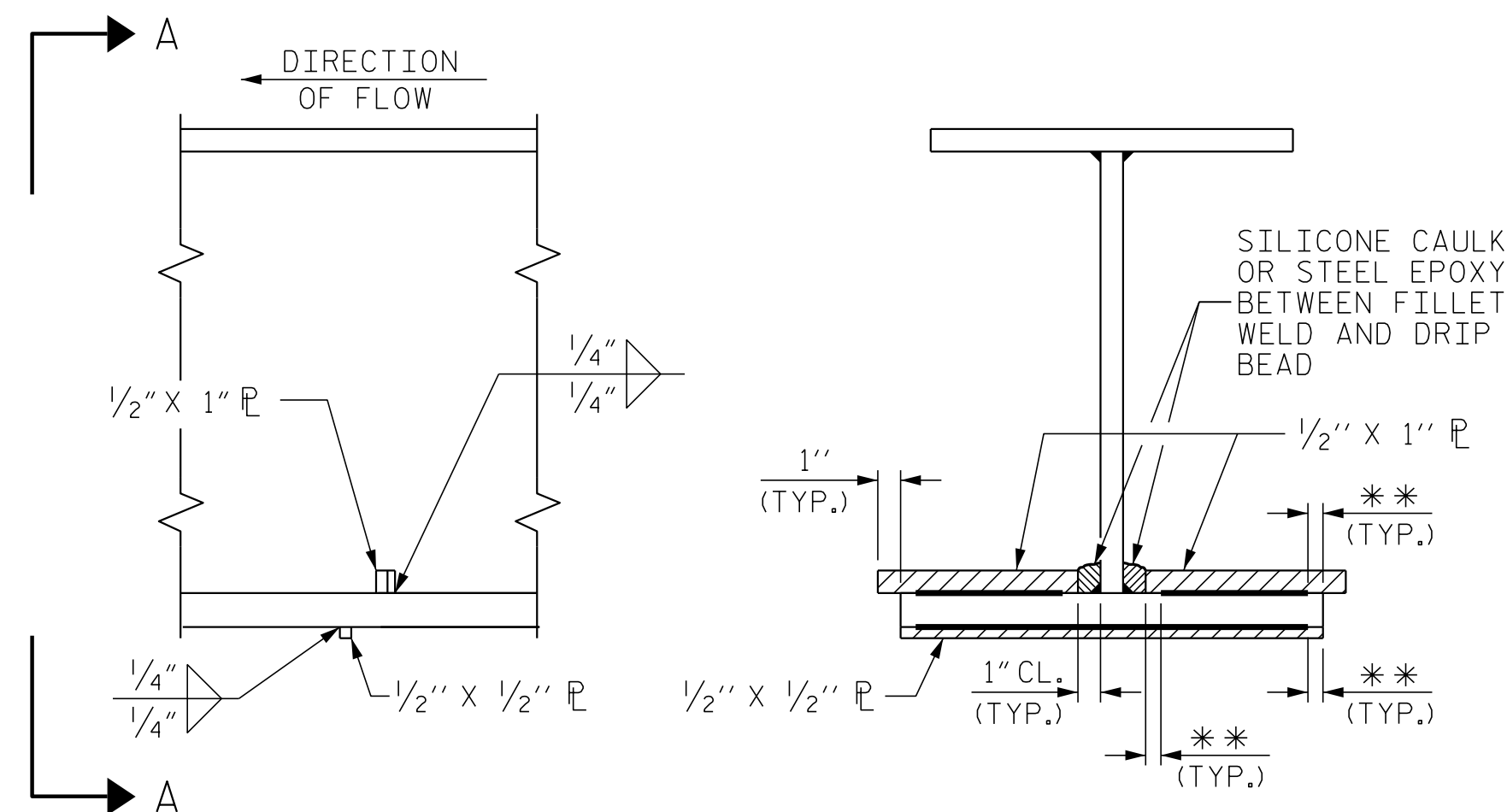
STRUCTURAL STEEL ERECTION IN A CONTINUOUS UNIT SHALL BE COMPLETE BEFORE FALSEWORK OR FORMS ARE PLACED ON THE UNIT.

END OF GIRDERS SHALL BE PLUMB.

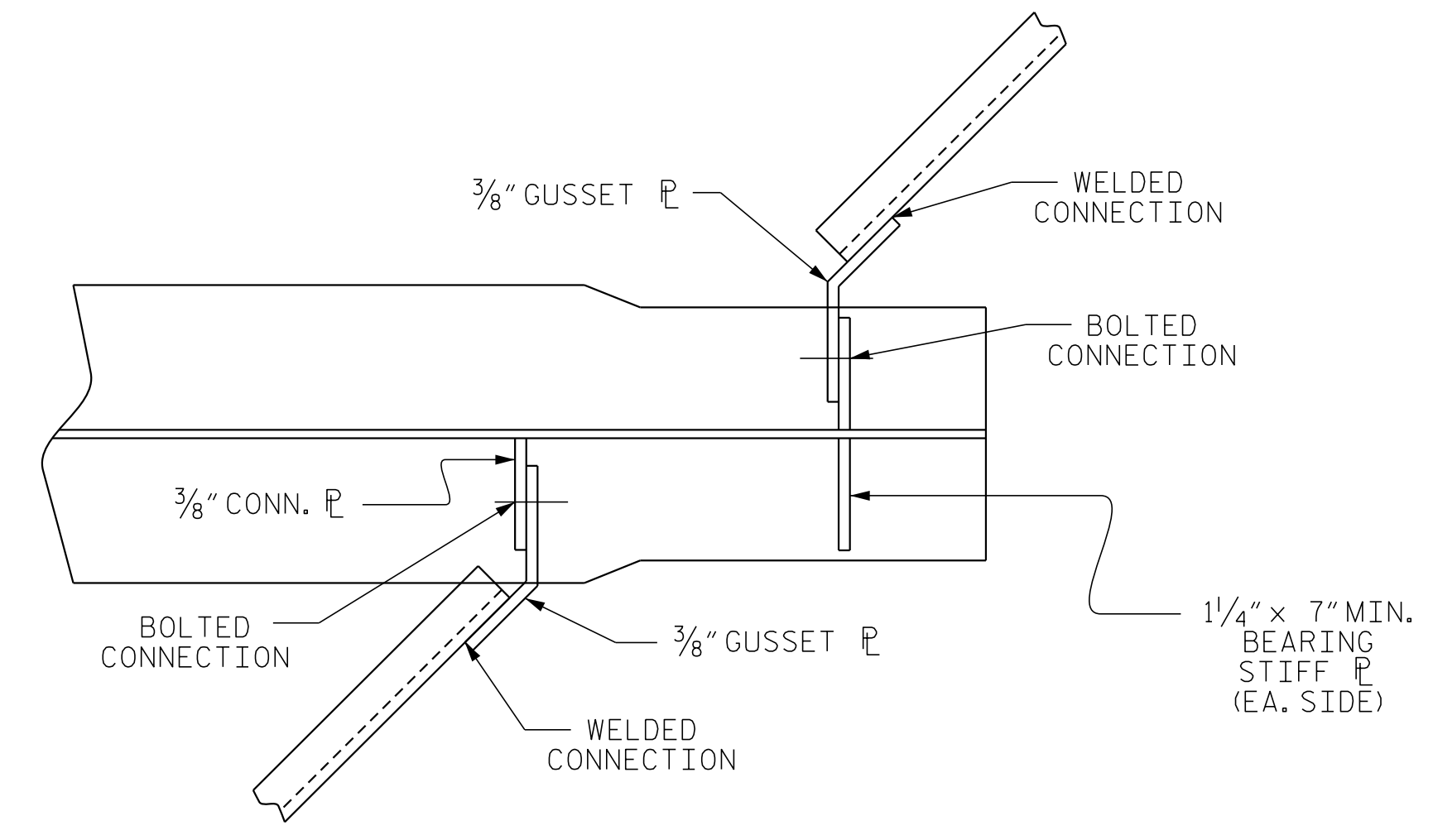
WHEN BEARING STIFFENERS ARE USED AS CONNECTOR PLATES THE FABRICATOR MAY ADJUST THE WIDTH AS NECESSARY, 7" MINIMUM, BEARING STIFFENERS MAY REQUIRE COPING IF WIDER THAN BOTTOM FLANGE.



PART PLAN - BOTTOM FLANGE
(END BENT No. 1 SHOWN, END BENT No. 2 SIMILAR)



SECTION
VIEW A-A
** SEE "WELD TERMINATION DETAILS" SHEET 2 OF 4
DRIP BEAD DETAILS



CONNECTOR PLATE DETAIL
(EACH END SIMILAR)

PROJECT NO. I-5786
JOHNSTON COUNTY
STATION: 17+77.11 -Y1-
SHEET 4 OF 4

ENGINEER OF RECORD:
DocuSigned by:
Gregory M. Olland
NORTH CAROLINA
PROFESSIONAL
SEAL
37400
ENGINEER
GREGORY M. OLLAND
6/6/2017
ETHERILL
ENGINEERING
1223 Jones Franklin Rd.
Raleigh, N.C. 27606
Bus: 919 851 8077
Fax: 919 851 8107
LICENSE NO. F-0377

STATE OF NORTH CAROLINA
DEPARTMENT OF TRANSPORTATION
RALEIGH
SUPERSTRUCTURE
STRUCTURAL STEEL
DETAILS

REVISIONS					
NO.	BY:	DATE:	NO.	BY:	DATE:
1			3		
2			4		

SHEET NO. S01-13
TOTAL SHEETS 32

DRAWN BY: D. HODGE DATE: 4/17
CHECKED BY: B.C. HUNT DATE: 5/17

DOCUMENT NOT CONSIDERED FINAL
UNLESS ALL SIGNATURES COMPLETED

P:\2017\I-5786\Structures\DGN\LizzieMill_Y1\I-5786-Y1_SS_WE_I.dgn 6/6/2017 8:07:38 AM