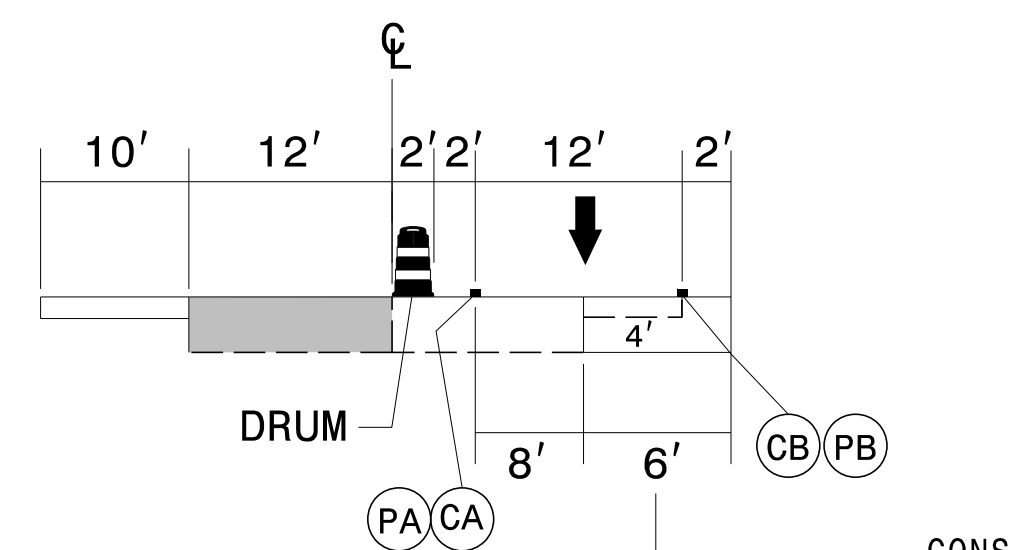
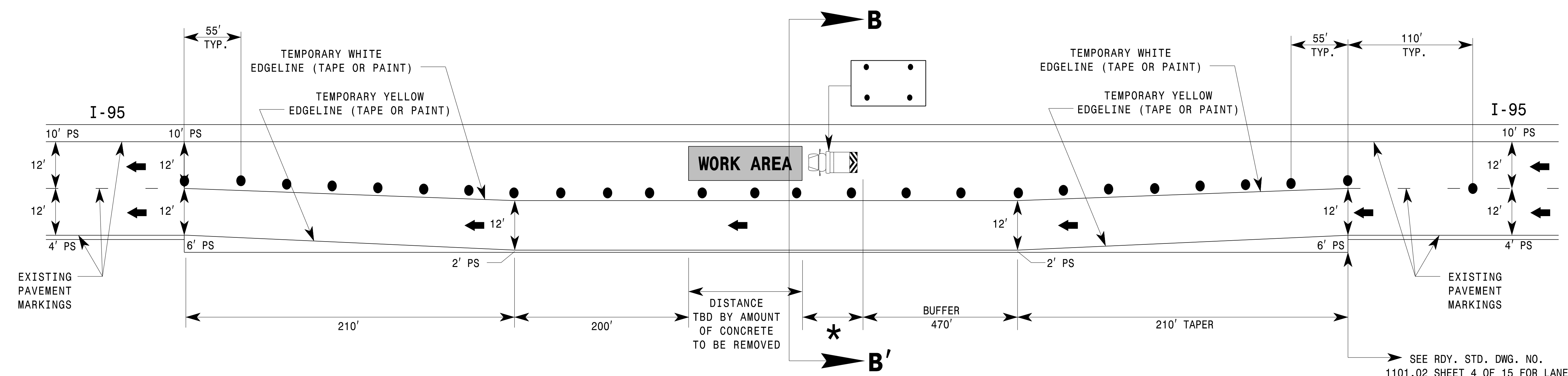


TYPICAL SECTION A-A'

INSIDE LANE CLOSURE DETAIL - PLAN AND SECTION VIEWS

\* POSITION THE TMA TO MAINTAIN A ROLL-AHEAD DISTANCE AS RECOMMENDED BY THE MANUFACTURER.



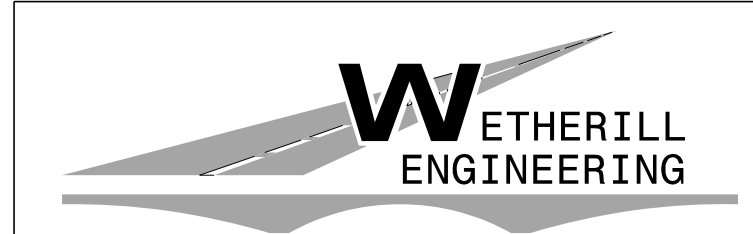
TYPICAL SECTION B-B'

OUTSIDE LANE CLOSURE DETAIL - PLAN AND SECTION VIEWS

\* POSITION THE TMA TO MAINTAIN A ROLL-AHEAD DISTANCE AS RECOMMENDED BY THE MANUFACTURER.

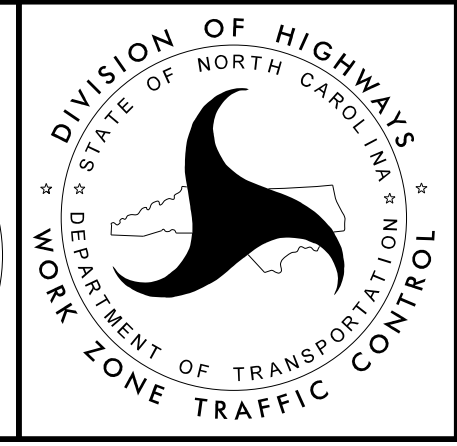
5/22/2017 P:\2017\I-5786\TrafficControl\TCPV\I-5786\_TC\_TMP\_PSH\_20.dgn User:skennedy

DOCUMENT NOT CONSIDERED FINAL UNLESS ALL SIGNATURES COMPLETED



1223 Jones Franklin Rd.  
Raleigh, N.C. 27606  
License No. F-0377  
Bus: 919 851 8077  
Fax: 919 851 8107

APPROVED: \_\_\_\_\_ 6/5/2017  
DATE: \_\_\_\_\_  
SEAL  
Bob A. May  
Professional Engineer  
No. 21116



CONCRETE PAVEMENT REMOVAL DETAILS