

THE EXISTING POSTED SPEED LIMIT R2-1 36" X 48"
 SPEED LIMIT 65
 SP 11294 36" X 30"
 END \$250 FINE

SEE R.S.D 1101.02, SHEET 4 OF 15 FOR ADDITIONAL DEVICES FOR LANE CLOSURES

MESSAGE NO. 1	MESSAGE NO. 2
55 MPH ZONE AHEAD	\$250 FINE AHEAD

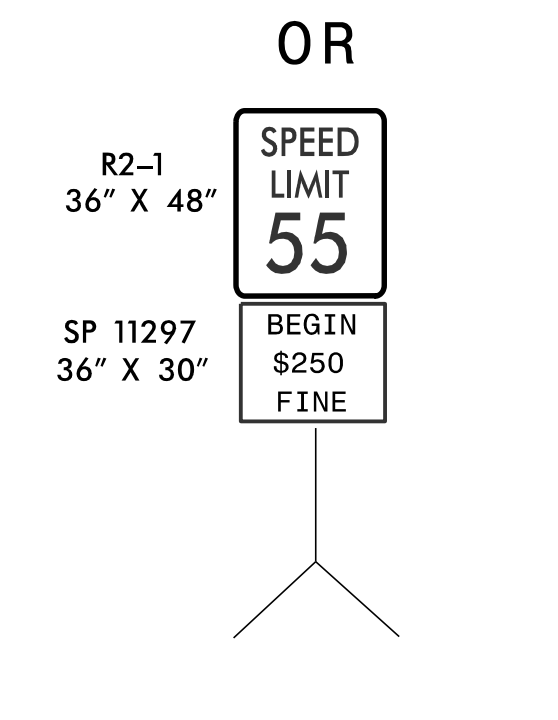
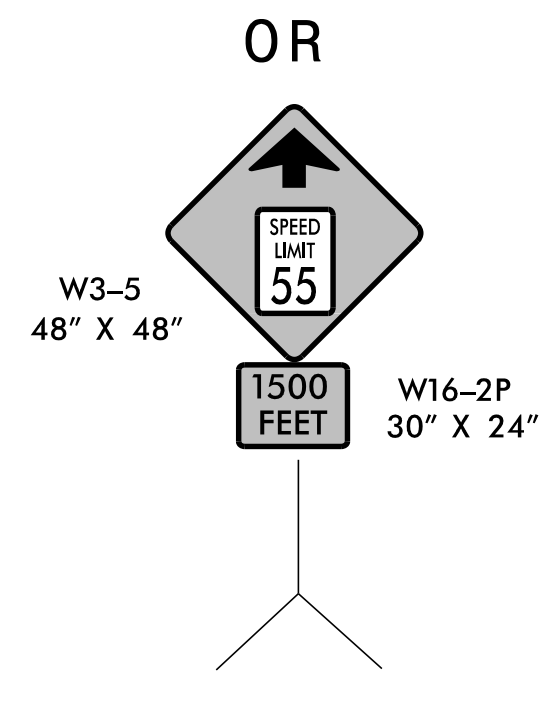
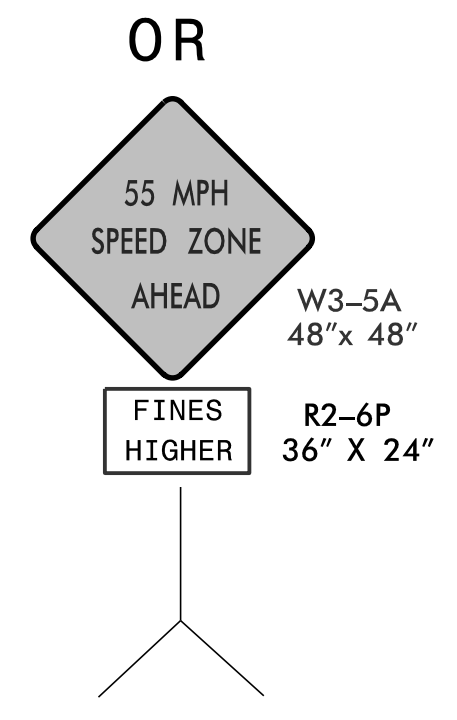
CHANGEABLE MESSAGE SIGN

MESSAGE NO. 1	MESSAGE NO. 2
BEGIN 55 MPH 1500 FT	WORKERS IN ROADWAY

CHANGEABLE MESSAGE SIGN

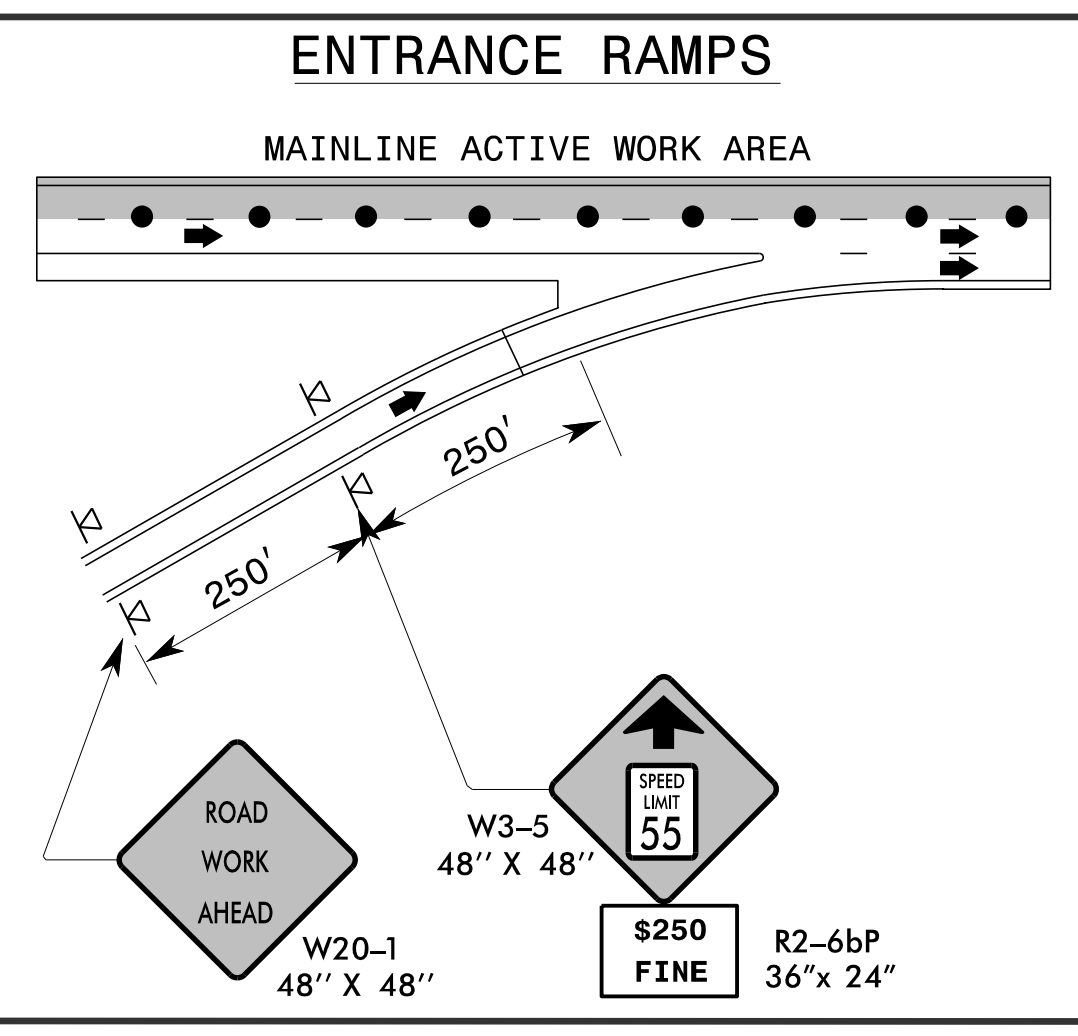
MESSAGE NO. 1	MESSAGE NO. 2
SPEED LIMIT 55	BEGIN \$250 FINE

CHANGEABLE MESSAGE SIGN



GUIDELINES

1. THIS DRAWING IS FOR USE ONLY AFTER AN ENGINEERING INVESTIGATION HAS BEEN PERFORMED BY THE REGIONAL TRAFFIC ENGINEER AND WORK ZONE TRAFFIC CONTROL SECTION. THE WORK ZONE "VARIABLE" SPEED LIMIT IS INTENDED FOR USE ON FREEWAYS WITH SPEED LIMITS 65 MPH OR GREATER. SEE WORK ZONE "VARIABLE" SPEED LIMIT GUIDELINES FOR CRITERIA.
2. THE STATE TRAFFIC ENGINEER HAS TO ORDINANCE THE SPEED LIMIT REDUCTION IN ORDER FOR THE REDUCTION AND/OR \$250 SPEEDING FINE TO BE VALID AND ENFORCEABLE. NO SPEED LIMIT MESSAGE/SIGNS SHALL BE INSTALLED PRIOR TO RECEIVING A SIGNED ORDINANCE. IN ADDITION, THE \$250 SPEEDING FINE ALSO REQUIRES A SEPARATE SIGNED ORDINANCE BY THE STATE TRAFFIC ENGINEER.
3. EACH DIRECTION OF THE PROJECT IS TO BE EVALUATED FOR THE WORK ZONE "VARIABLE" SPEED LIMIT REDUCTION. THIS DRAWING INTENTIONALLY HAS 1 DIRECTION SIGNED AS A REMINDER TO CAREFULLY CONSIDER WHETHER BOTH DIRECTIONS OF THE PROJECT NEED TO HAVE THE SPEED LIMIT REDUCED.
4. THE MAXIMUM LANE CLOSURE LENGTH IS 2 MILES UNLESS OTHERWISE SHOWN IN THE PLANS. IN ADDITION, FOR ACTIVE WORK AREAS THAT EXCEED 1 MILE IN LENGTH, AN EVALUATION IS TO BE MADE TO DETERMINE IF ADDITIONAL CMS'S/SIGNS ARE NEEDED TO SUPPLEMENT THE INITIAL ONES. PORTABLE MOUNTED W3-5 SIGNS WITH SPEEDING PENALTY SIGNS ARE TO BE PLACED ALONG ENTRANCE RAMPS LOCATED WITHIN THE ACTIVE WORK AREA.
5. THE \$250 SPEEDING FINE PENALTY APPLIES FOR ALL PROJECTS THAT QUALIFY FOR A WORK ZONE "VARIABLE" SPEED LIMIT REDUCTION.
6. THIS APPLICATION IS FOR SHORT-TERM ACTIVITIES SUCH AS LANE CLOSURES AND ROAD CLOSURES. THE WORK ZONE "VARIABLE" SPEED LIMIT SHALL NOT BE IN OPERATION CONTINUOUSLY (24/7) FOR A PERIOD EXCEEDING 30 CALENDAR DAYS. THE WORK ZONE "VARIABLE" SPEED LIMIT MESSAGING/SIGNAGE SHALL BE REMOVED AT THE COMPLETION OF THE ACTIVITY. THE REGIONAL TRAFFIC ENGINEER WILL BE NOTIFIED BY THE RESIDENT ENGINEER TO RESCIND THE ORDINANCE.
7. WHEN WORK ZONE "VARIABLE" SPEED LIMIT REDUCTIONS ARE IN EFFECT, THE CONTRACTOR IS TO COVER ANY EXISTING SPEED LIMIT SIGNS LOCATED WITHIN THE ACTIVE WORK AREA THAT CONFLICT WITH THE WORK ZONE "VARIABLE" SPEED LIMIT REDUCTION.



NOTES

1. THE WORK ZONE "VARIABLE" SPEED LIMIT WILL BE ESTABLISHED IN COLLABORATION BETWEEN THE REGIONAL TRAFFIC ENGINEER, THE DIVISION, AND THE WORK ZONE TRAFFIC CONTROL SECTION. THIS DRAWING SHOWS THE TYPICAL APPLICATION OF REDUCING THE SPEED LIMIT TO 55 MPH.
2. TYPICALLY THE WORK ZONE "VARIABLE" SPEED LIMIT APPLIES TO A SPECIFIC PORTION AND NOT THE ENTIRE PROJECT. THE WORK AREA AFFECTED BY THE SPEED REDUCTION SHOULD NOT EXCEED 2 MILES UNLESS THE MAXIMUM LENGTH OF LANE CLOSURE ALLOWED BY THE PLANS EXCEEDS THE 2 MILE MAXIMUM.
3. THE WORK ZONE "VARIABLE" SPEED LIMIT AND THE \$250 SPEEDING FINE IS TO BEGIN 500' IN ADVANCE OF THE FLASHING ARROW PANEL AT THE MERGE TAPER. THE EXISTING SPEED LIMIT SIGNS AND THE "END \$250 FINE" SIGNS ARE TO BE INSTALLED AT THE LOCATION WHERE THE EXISTING SPEED LIMIT IS TO RESUME.
4. THE NEED AND LOCATION OF ADDITIONAL POSTED WORK ZONE "VARIABLE" SPEED LIMIT SIGNS WITHIN THE LANE CLOSURE IS TO BE DETERMINED BY THE REGIONAL TRAFFIC ENGINEER.

APPROVED: _____ DATE: 6/5/2017

WORK ZONE "VARIABLE" SPEED LIMIT REDUCTION