

MESSAGE NO. 1	MESSAGE NO. 2
EXIT 106 CLOSED	USE EXIT 105

CHANGEABLE MESSAGE SIGN

PLACE CMS 1 MILE IN ADVANCE OF CLOSED EXIT, OR AS DIRECTED BY THE ENGINEER.

DETOUR SIGNING

MESSAGE NO. 1	MESSAGE NO. 2
EXIT 106 CLOSED	USE NEXT EXIT

CHANGEABLE MESSAGE SIGN

PLACE CMS 1,000' IN ADVANCE OF OFF-RAMP TAPER, OR AS DIRECTED BY THE ENGINEER.

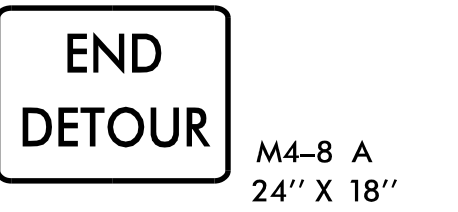
(A)

MESSAGE NO. 1	MESSAGE NO. 2
TRUCK STOP RD DETOUR	USE THIS EXIT

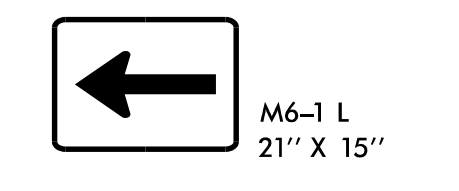
CHANGEABLE MESSAGE SIGN

PLACE CMS 1,000' IN ADVANCE OF OFF-RAMP TAPER, OR AS DIRECTED BY THE ENGINEER.

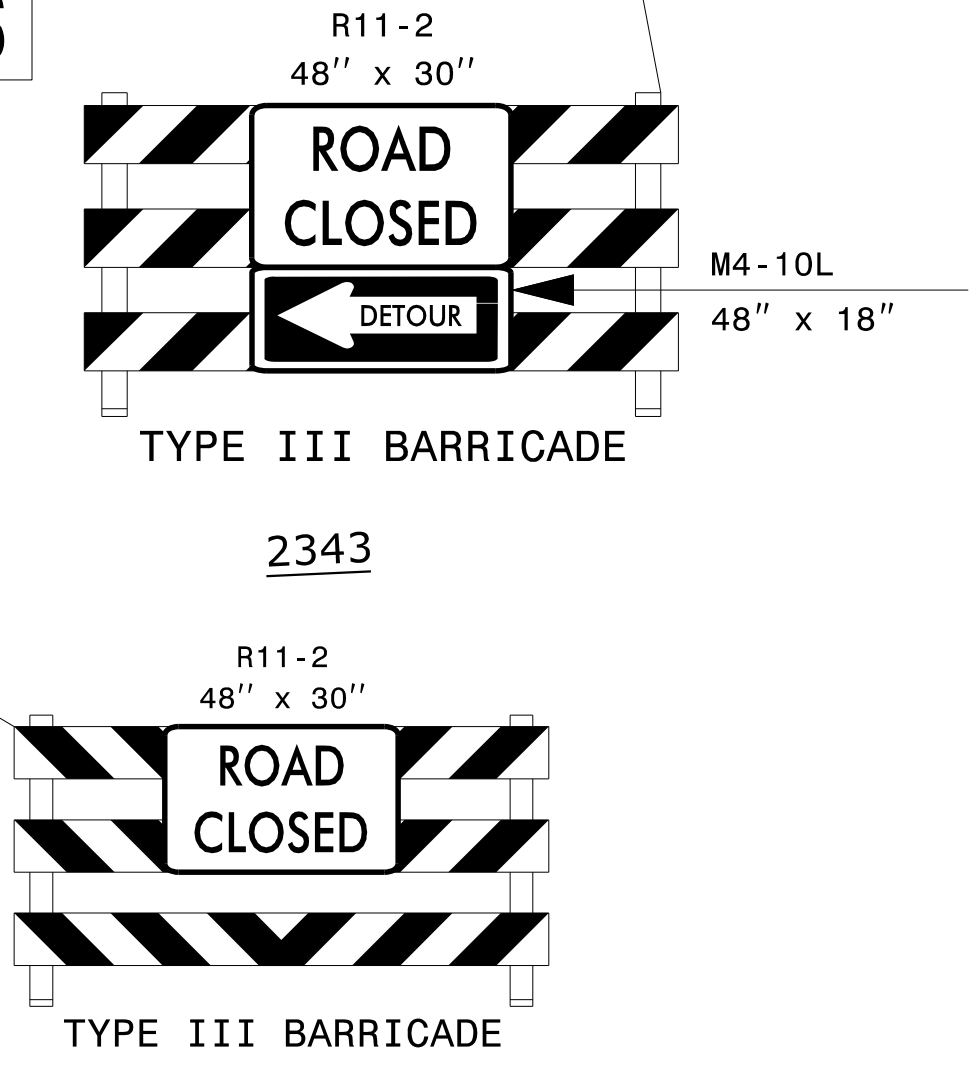
(B)



(D)



(C)



NOTES: SEE TMP-2B FOR "TRUCK STOP ROAD" SPECIAL SIGN DESIGN.
 DRUM OFF DECELERATION LANE TO CLOSED RAMP.
 ALL DETOUR SIGN LOCATIONS ARE APPROXIMATE.



DOCUMENT NOT CONSIDERED FINAL
 UNLESS ALL SIGNATURES COMPLETED

TRANSPORTATION PLANNING/DESIGN - BRIDGE/STRUCTURE DESIGN
 CIVIL/SITE DESIGN - GIS/GPS - CONSTRUCTION OBSERVATION

1223 Jones Franklin Rd.
 Raleigh, N.C. 27606
 License No. F-0377
 Bus: 919 851 8077
 Fax: 919 851 8107

APPROVED: 6/5/2017 DATE: _____

DETOUR
I-95 (-L-) SB
EXIT 106 CLOSED TO
TRUCK STOP ROAD