

MESSAGE NO. 1	MESSAGE NO. 2
EXIT 106	USE EXIT 107
CLOSED	

CHANGEABLE MESSAGE SIGN
 PLACE CMS 1 MILE IN ADVANCE OF CLOSED EXIT, OR AS DIRECTED BY THE ENGINEER.

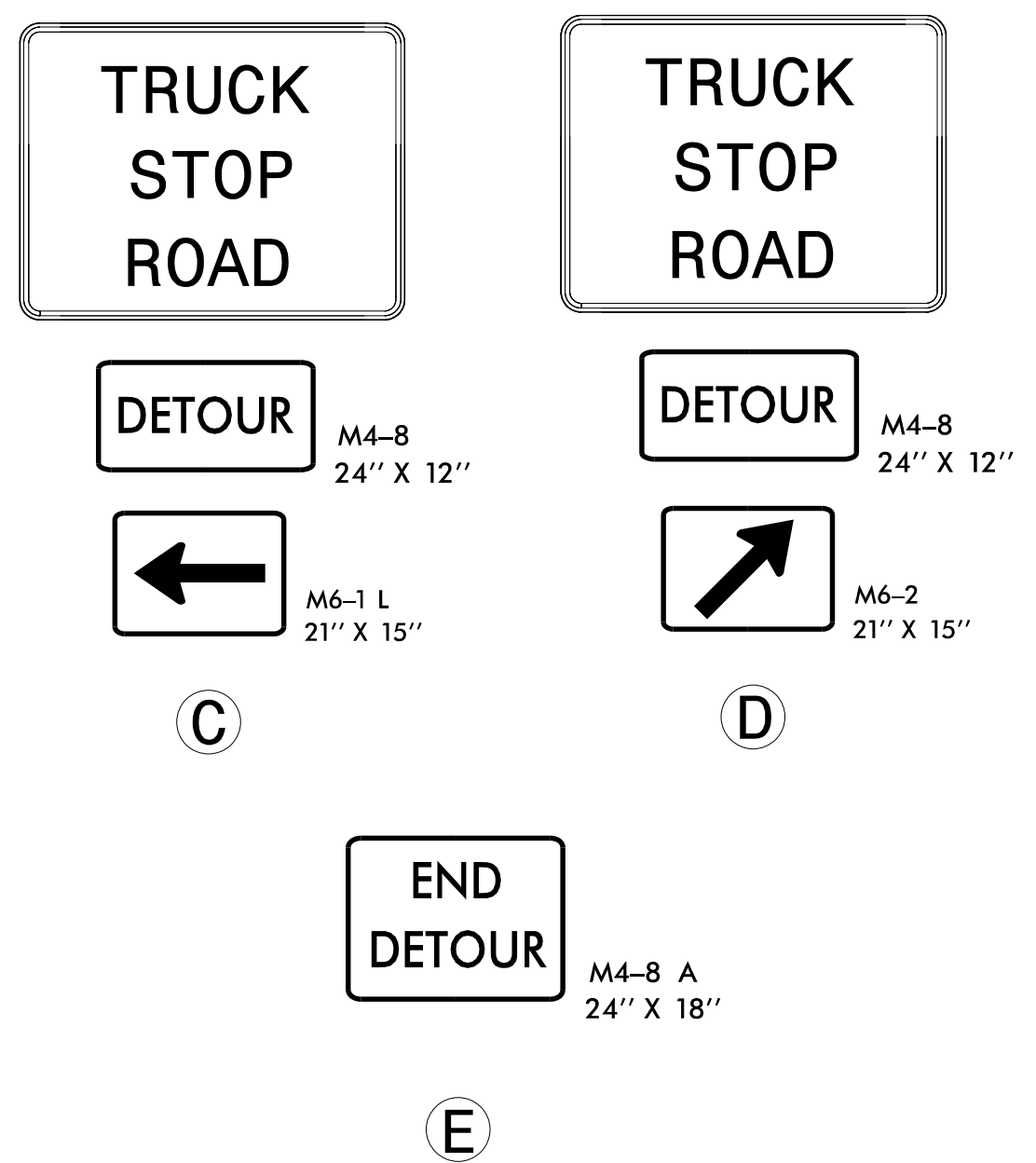
DETOUR SIGNING

MESSAGE NO. 1	MESSAGE NO. 2
EXIT 106	USE NEXT EXIT
CLOSED	

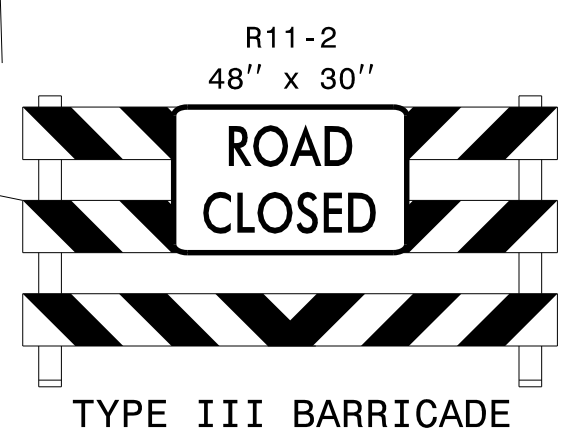
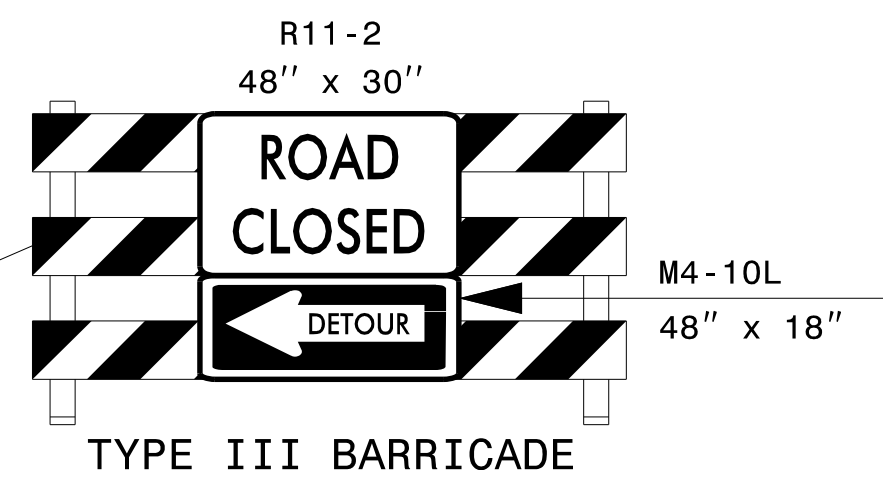
CHANGEABLE MESSAGE SIGN
 PLACE CMS 1,000' IN ADVANCE OF OFF-RAMP TAPER, OR AS DIRECTED BY THE ENGINEER.

MESSAGE NO. 1	MESSAGE NO. 2
TRUCK STOP RD	USE THIS EXIT
DETOUR	

CHANGEABLE MESSAGE SIGN
 PLACE CMS 1,000' IN ADVANCE OF OFF-RAMP TAPER, OR AS DIRECTED BY THE ENGINEER.



NOTES: SEE TMP-2B FOR "TRUCK STOP ROAD" SPECIAL SIGN DESIGN.
 DRUM OFF DECELERATION LANE TO CLOSED RAMP.
 ALL DETOUR SIGN LOCATIONS ARE APPROXIMATE.



DOCUMENT NOT CONSIDERED FINAL UNLESS ALL SIGNATURES COMPLETED

WETHERILL ENGINEERING
 TRANSPORTATION PLANNING/DESIGN - BRIDGE/STRUCTURE DESIGN
 CIVIL/SITE DESIGN - GIS/GPS - CONSTRUCTION OBSERVATION

1223 Jones Franklin Rd.
 Raleigh, N.C. 27606
 License No. F-0377
 Bus: 919 851 8077
 Fax: 919 851 8107

APPROVED: _____ DATE: 6/5/2017

SEAL
 NORTH CAROLINA PROFESSIONAL ENGINEER
 SEAL 21116
 BOB A. MAY

DIVISION OF HIGHWAYS
 STATE OF NORTH CAROLINA
 DEPARTMENT OF TRANSPORTATION
 WORK ZONE TRAFFIC CONTROL

DETOUR
I-95 (-L-) NB
EXIT 106 CLOSED TO
TRUCK STOP ROAD