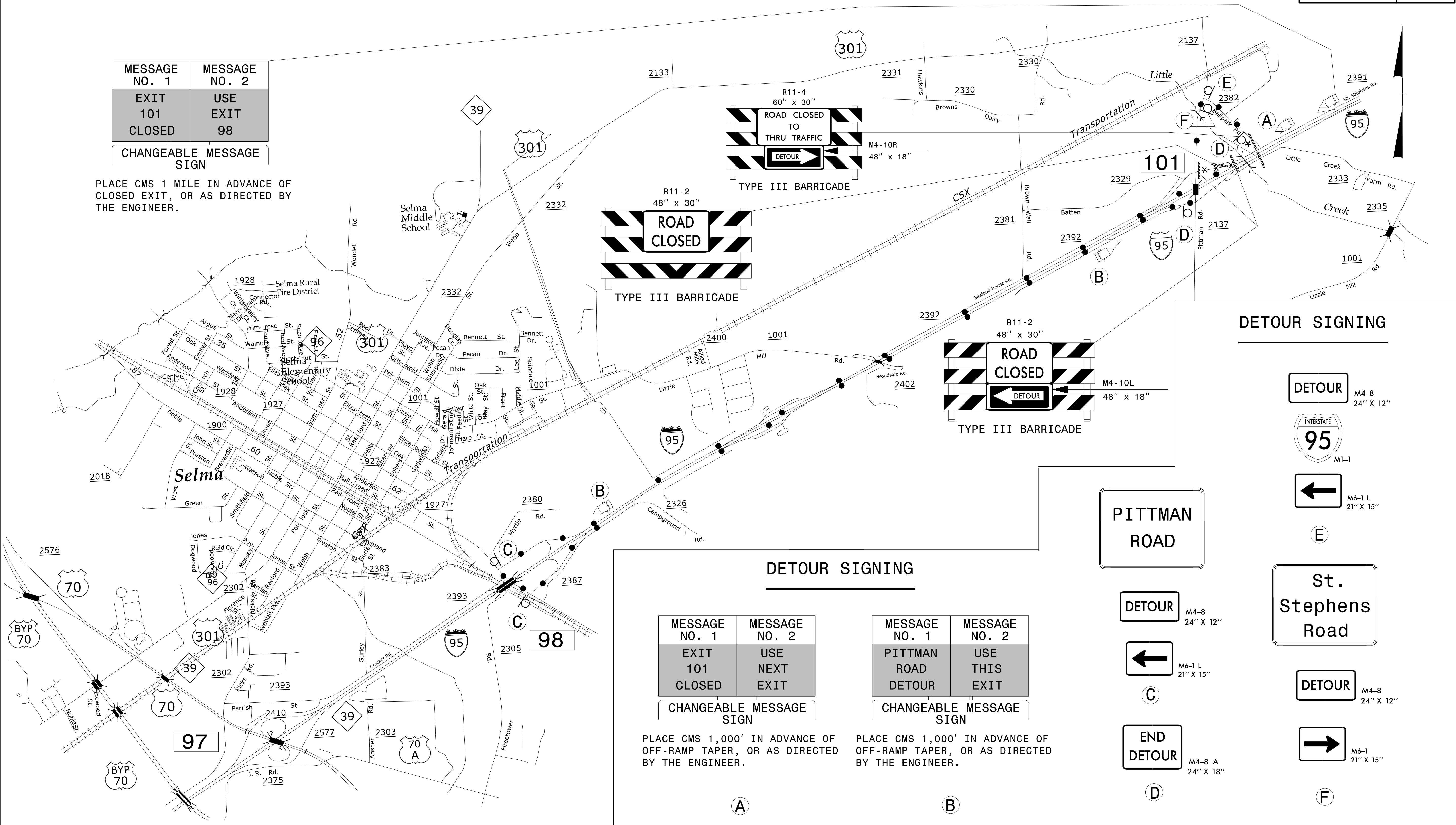


MESSAGE NO. 1	MESSAGE NO. 2
EXIT 101 CLOSED	USE EXIT 98

CHANGEABLE MESSAGE SIGN

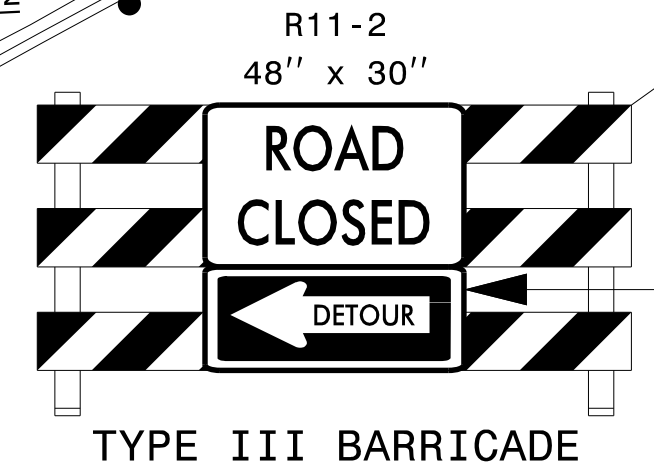
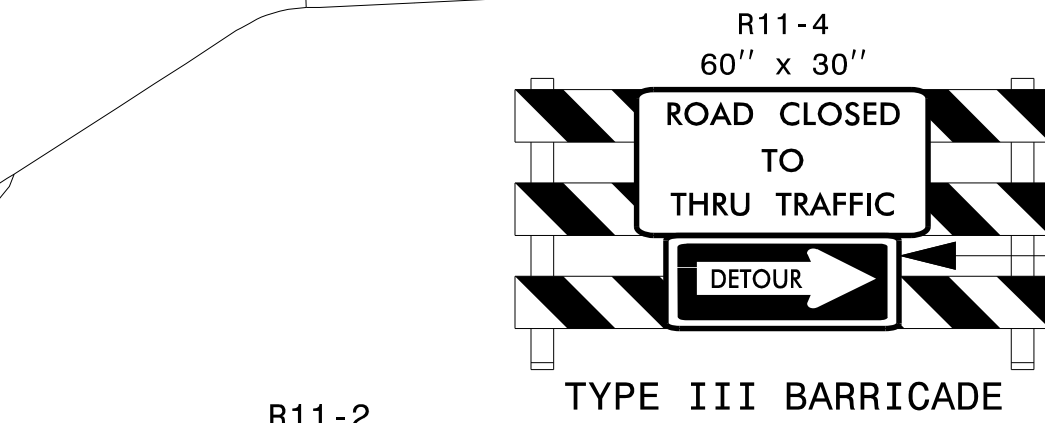
PLACE CMS 1 MILE IN ADVANCE OF CLOSED EXIT, OR AS DIRECTED BY THE ENGINEER.



NOTES: SEE TMP-2 FOR "PITTMAN ROAD" AND TMP-2A FOR "ST. STEPHENS ROAD" SPECIAL SIGN DESIGNS.
 DRUM OFF DECELERATION LANE TO CLOSED RAMP.
 ALL DETOUR SIGN LOCATIONS ARE APPROXIMATE.

* SEE RSD 1101.03, SHEET 1 OF 9, FOR TYPE III BARRICADE LOCATION WITH ATTACHED SIGNING & ADDITIONAL SIGNING FOR ROAD CLOSURE.

DETOUR ROUTE ● — ● — ●



MESSAGE NO. 1	MESSAGE NO. 2
EXIT 101 CLOSED	USE NEXT EXIT 98

CHANGEABLE MESSAGE SIGN

PLACE CMS 1,000' IN ADVANCE OF OFF-RAMP TAPER, OR AS DIRECTED BY THE ENGINEER.

MESSAGE NO. 1	MESSAGE NO. 2
PITTMAN ROAD DETOUR	USE THIS EXIT

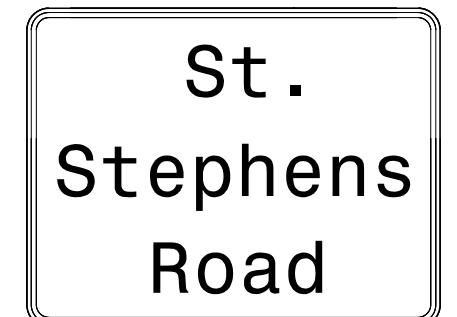
CHANGEABLE MESSAGE SIGN

PLACE CMS 1,000' IN ADVANCE OF OFF-RAMP TAPER, OR AS DIRECTED BY THE ENGINEER.

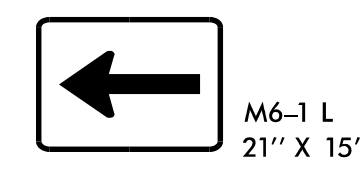
DETOUR SIGNING



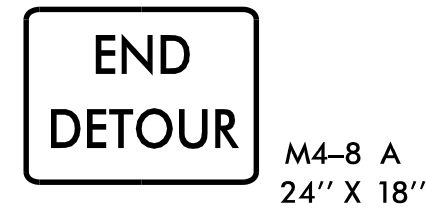
E



F



C



D

DETOUR SIGNING

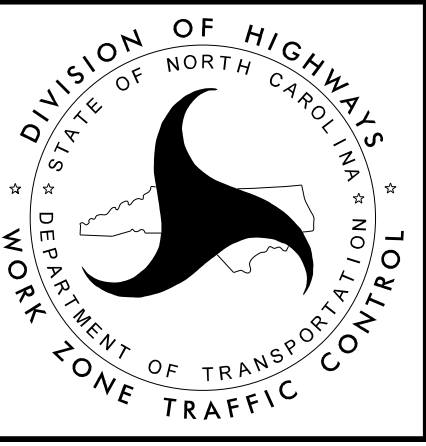
DOCUMENT NOT CONSIDERED FINAL
UNLESS ALL SIGNATURES COMPLETED



1223 Jones Franklin Rd.
 Raleigh, N.C. 27606
 License No. F-0377
 Bus: 919 851 8077
 Fax: 919 851 8107

APPROVED: _____ DATE: _____

6/5/2017



DETOUR
I-95 (-L-) SB
EXIT 101 CLOSED TO
PITTMAN ROAD

TRANSPORTATION PLANNING/DESIGN - BRIDGE/STRUCTURE DESIGN
 CIVIL/SITE DESIGN - GIS/GPS - CONSTRUCTION OBSERVATION