

DETOUR SIGNING

MESSAGE NO. 1	MESSAGE NO. 2
EXIT 101 CLOSED	USE EXIT 102

CHANGEABLE MESSAGE SIGN
PLACE CMS 1 MILE IN ADVANCE OF CLOSED EXIT, OR AS DIRECTED BY THE ENGINEER.

MESSAGE NO. 1	MESSAGE NO. 2
EXIT 101 CLOSED	USE NEXT EXIT

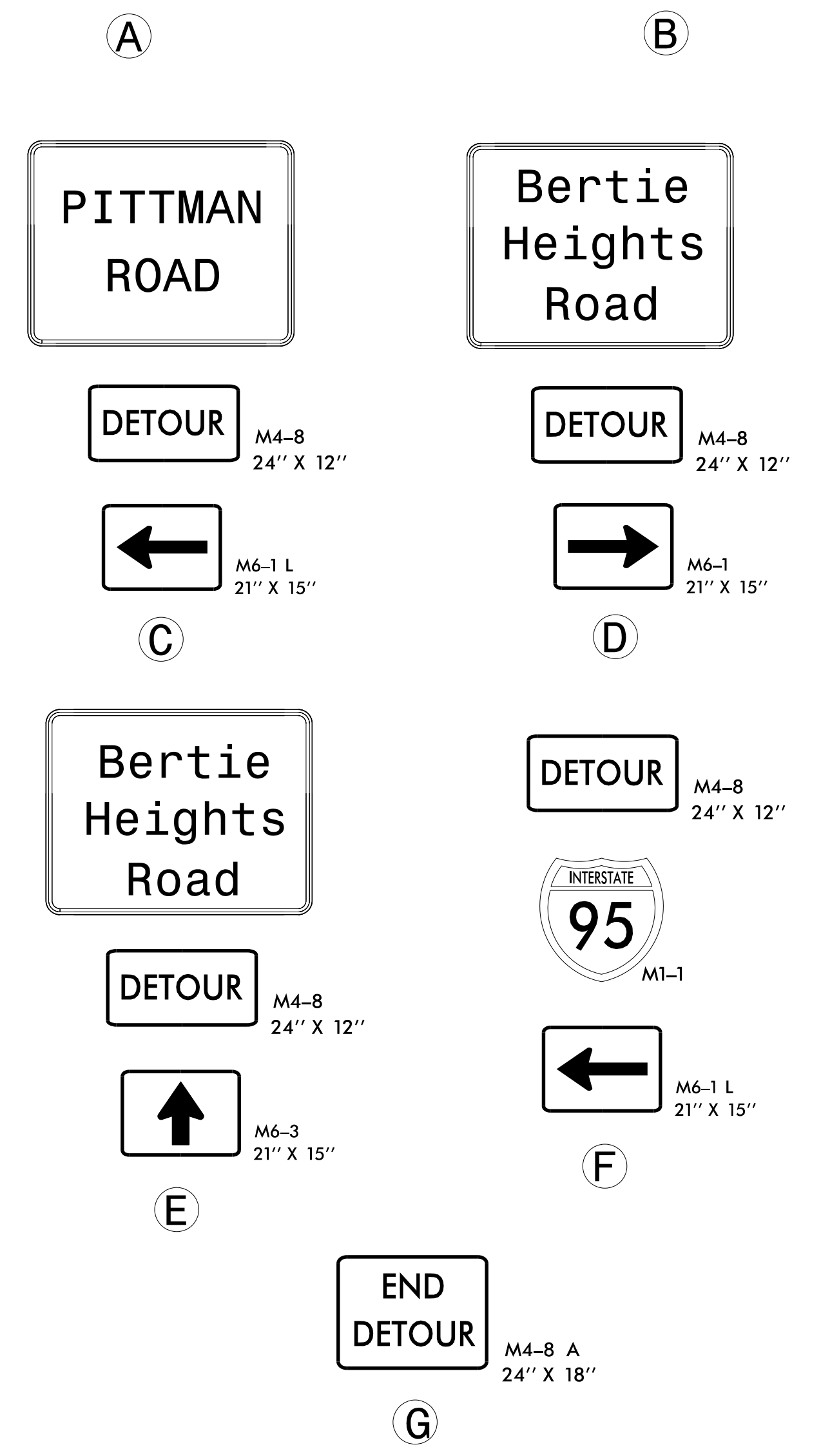
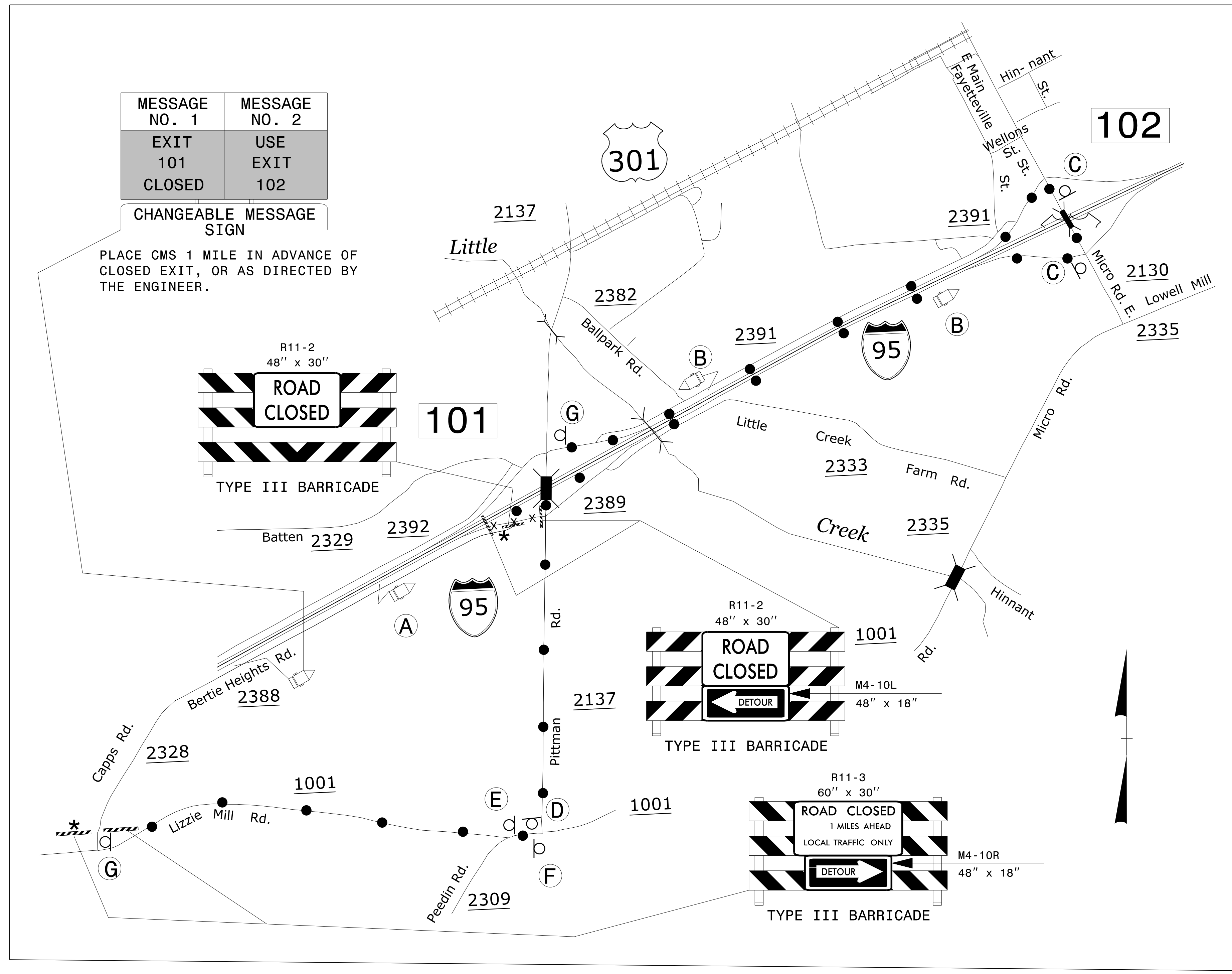
CHANGEABLE MESSAGE SIGN

PLACE CMS 1,000' IN ADVANCE OF OFF-RAMP TAPER, OR AS DIRECTED BY THE ENGINEER.

MESSAGE NO. 1	MESSAGE NO. 2
PITTMAN ROAD DETOUR	USE THIS EXIT

CHANGEABLE MESSAGE SIGN

PLACE CMS 1,000' IN ADVANCE OF OFF-RAMP TAPER, OR AS DIRECTED BY THE ENGINEER.



NOTES: SEE TMP-2 FOR "PITTMAN ROAD" AND "BERTIE HEIGHTS ROAD" SPECIAL SIGN DESIGNS.
 DRUM OFF DECELERATION LANE TO CLOSED RAMP.
 ALL DETOUR SIGN LOCATIONS ARE APPROXIMATE.
 * SEE RSD 1101.03, SHEET 1 OF 9, FOR TYPE III BARRICADE LOCATION WITH ATTACHED SIGNING & ADDITIONAL SIGNING FOR ROAD CLOSURE.

DETOUR ROUTE ● ● ●

WETHERILL ENGINEERING
 TRANSPORTATION PLANNING/DESIGN - BRIDGE/STRUCTURE DESIGN
 CIVIL/SITE DESIGN - GIS/GPS - CONSTRUCTION OBSERVATION

1223 Jones Franklin Rd.
 Raleigh, N.C. 27606
 License No. F-0377
 Bus: 919 851 8077
 Fax: 919 851 8107

DOCUMENT NOT CONSIDERED FINAL
 UNLESS ALL SIGNATURES COMPLETED

APPROVED: 6/5/2017 DATE:
 SEAL
 PROFESSIONAL ENGINEER
 BOB A. MAY

DIVISION OF HIGHWAYS
 STATE OF NORTH CAROLINA
 DEPARTMENT OF TRANSPORTATION
 WORK ZONE TRAFFIC CONTROL

DETOUR
 I-95 (-L-) NB
 EXIT 101 CLOSED TO
 PITTMAN ROAD