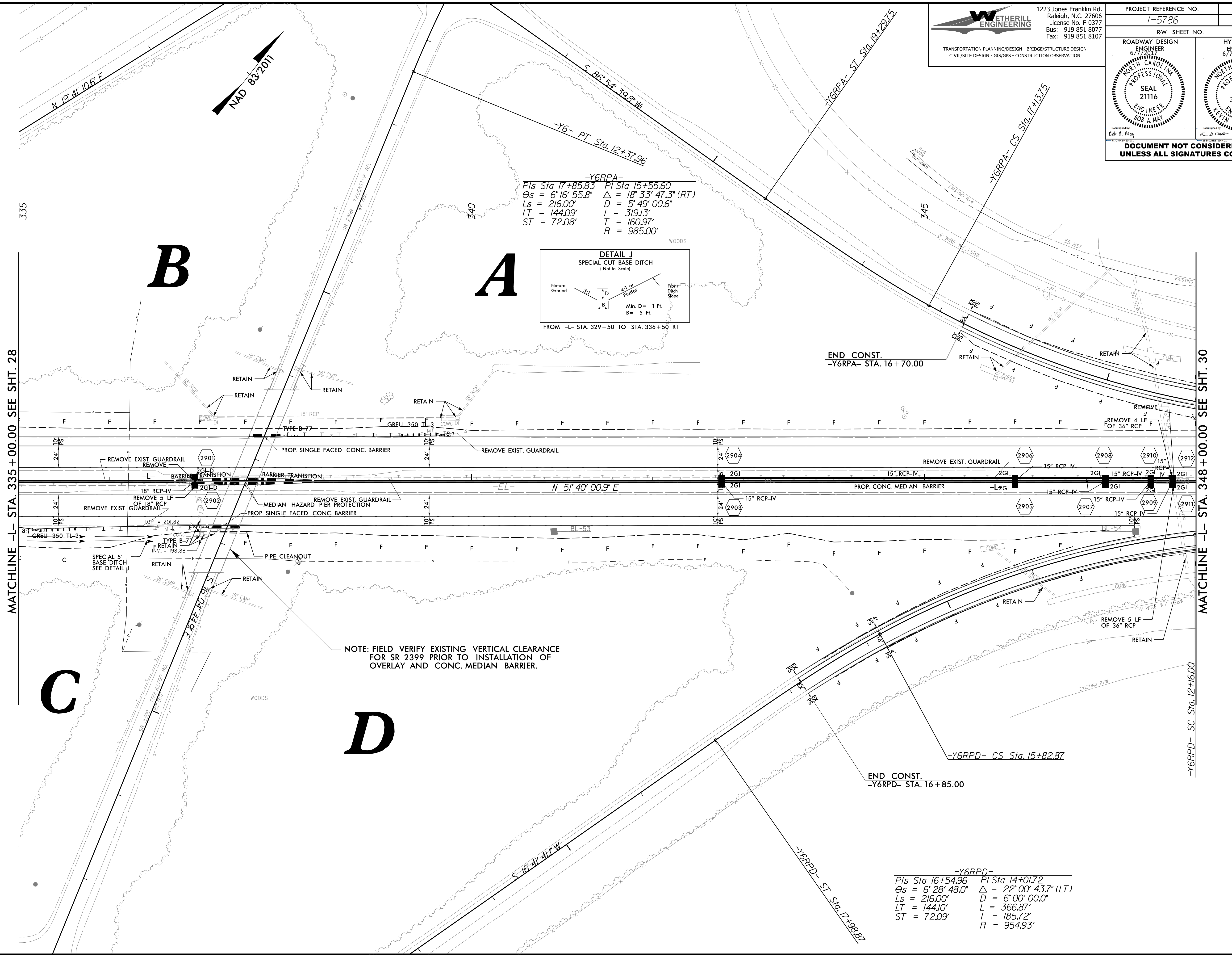


5/14/99

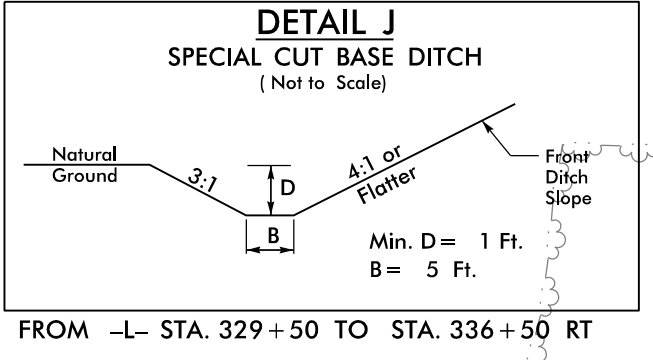
**WETHERILL ENGINEERING**  
 1223 Jones Franklin Rd.  
 Raleigh, N.C. 27606  
 License No. F-0377  
 Bus: 919 851 8077  
 Fax: 919 851 8107

TRANSPORTATION DESIGN - BRIDGE/STRUCTURE DESIGN  
 CIVIL/SITE DESIGN - GIS/GPS - CONSTRUCTION OBSERVATION

PROJECT REFERENCE NO. <b>1-5786</b>		SHEET NO. <b>29</b>	
RW SHEET NO.			
ROADWAY DESIGN ENGINEER 6/7/2017 NORTH CAROLINA PROFESSIONAL SEAL 21116 ENGINEER BOB A MAY		HYDRAULICS ENGINEER 6/7/2017 NORTH CAROLINA PROFESSIONAL SEAL 31977 ENGINEER STEVEN B ALFORD	
Developed by: <i>Edo E. May</i> Checked by: <i>Bob A May</i>			
<b>DOCUMENT NOT CONSIDERED FINAL UNLESS ALL SIGNATURES COMPLETED</b>			



**-Y6RPA-**  
 PIs Sta 17+85.83 PI Sta 15+55.60  
 $\Delta s = 6^{\circ}16'55.8''$   $\Delta = 18^{\circ}33'47.3''$  (RT)  
 $L_s = 216.00'$   $D = 5'49''00.6''$   
 $LT = 144.09'$   $L = 319.13'$   
 $ST = 72.08'$   $T = 160.97'$   
 $R = 985.00'$



NOTE: FIELD VERIFY EXISTING VERTICAL CLEARANCE FOR SR 2399 PRIOR TO INSTALLATION OF OVERLAY AND CONC. MEDIAN BARRIER.

MATCHLINE -L- STA. 335+00.00 SEE SHT. 28

MATCHLINE -L- STA. 348+00.00 SEE SHT. 30

-Y6RPD- SC Sta. 12+16.00

**-Y6RPD-**  
 PIs Sta 16+54.96 PI Sta 14+01.72  
 $\Delta s = 6^{\circ}28'48.0''$   $\Delta = 22^{\circ}00'43.7''$  (LT)  
 $L_s = 216.00'$   $D = 6'00''00.0''$   
 $LT = 144.10'$   $L = 366.87'$   
 $ST = 72.09'$   $T = 185.72'$   
 $R = 954.93'$

6/7/2017 1-5786\_Rdwy\_psh29.dgn