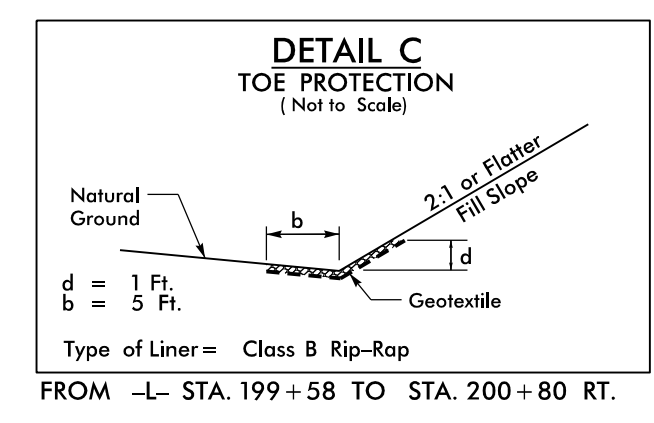
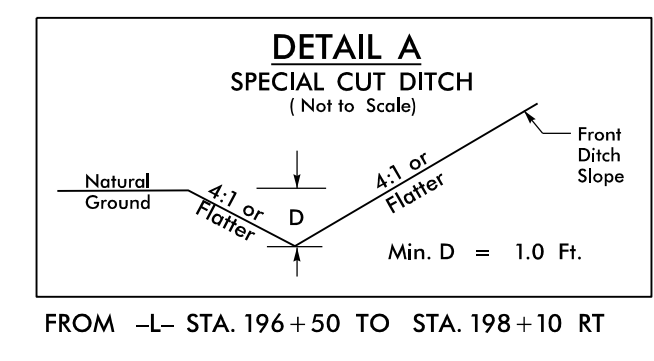


5/14/99

WETHERILL ENGINEERING
1223 Jones Franklin Rd.
Raleigh, N.C. 27606
License No. F-0377
Bus: 919 851 8077
Fax: 919 851 8107

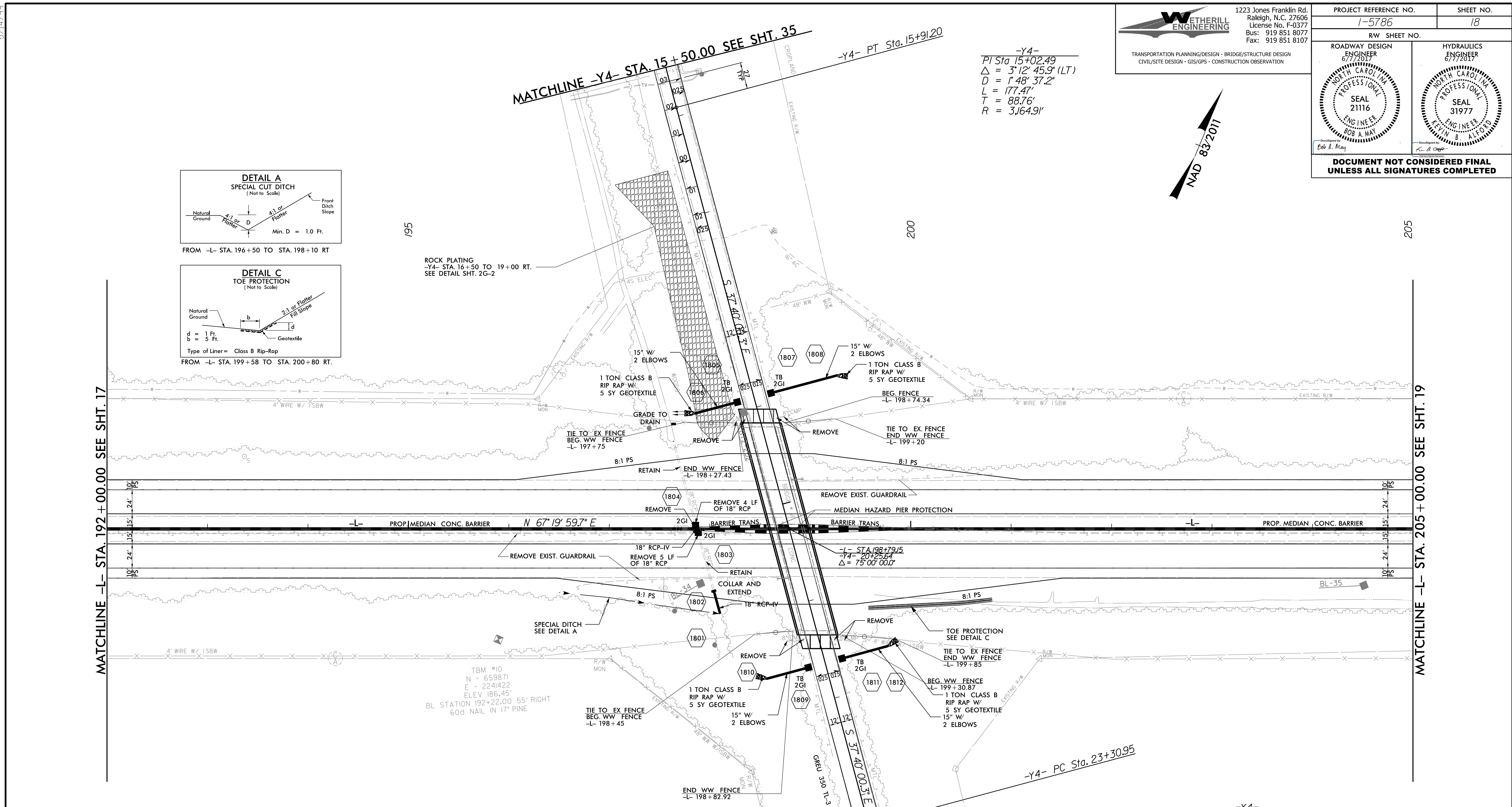
PROJECT REFERENCE NO. 1-5786	SHEET NO. 18
RW SHEET NO.	
ROADWAY DESIGN ENGINEER 6/7/2017 SEAL 21116 ENGINEER BOB A. MAY	HYDRAULICS ENGINEER 6/7/2017 SEAL 31977 ENGINEER STEVEN B. WOLFORD
DOCUMENT NOT CONSIDERED FINAL UNLESS ALL SIGNATURES COMPLETED	

-Y4-
PI Sta 15+02.49
 $\Delta = 3^{\circ}12'45.9" (LT)$
 $D = 1^{\circ}48'37.2"$
 $L = 177.47'$
 $T = 88.76'$
 $R = 3,164.91'$

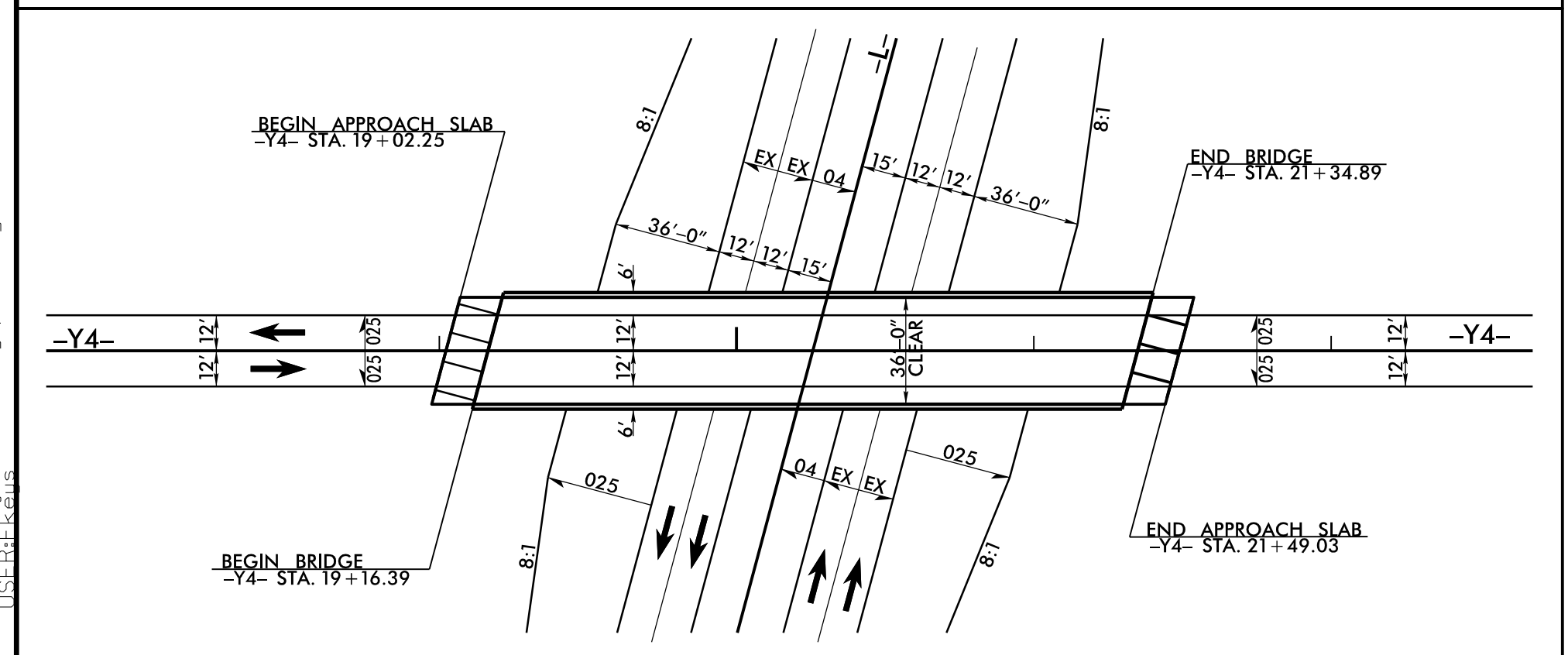


MATCHLINE -L- STA. 192+00.00 SEE SHT. 17

MATCHLINE -L- STA. 205+00.00 SEE SHT. 19



SKETCH SHOWING STRUCTURE/PAVEMENT RELATIONSHIP



-Y4-
PI Sta 28+27.05
 $\Delta = 0^{\circ}11'11.4" (RT)$
 $D = 0^{\circ}01'07.7"$
 $L = 992.20'$
 $T = 496.10'$
 $R = 304,830.85'$

WILLIAM O. DAVIS
AND
ROBERT F. BOO
AND
DB 1945 PC 765

SEBASTIAN VINCENT DEVLIN PAGE
AND
WILEY EMILY LABEL PAGE
DB 1945 PC 765