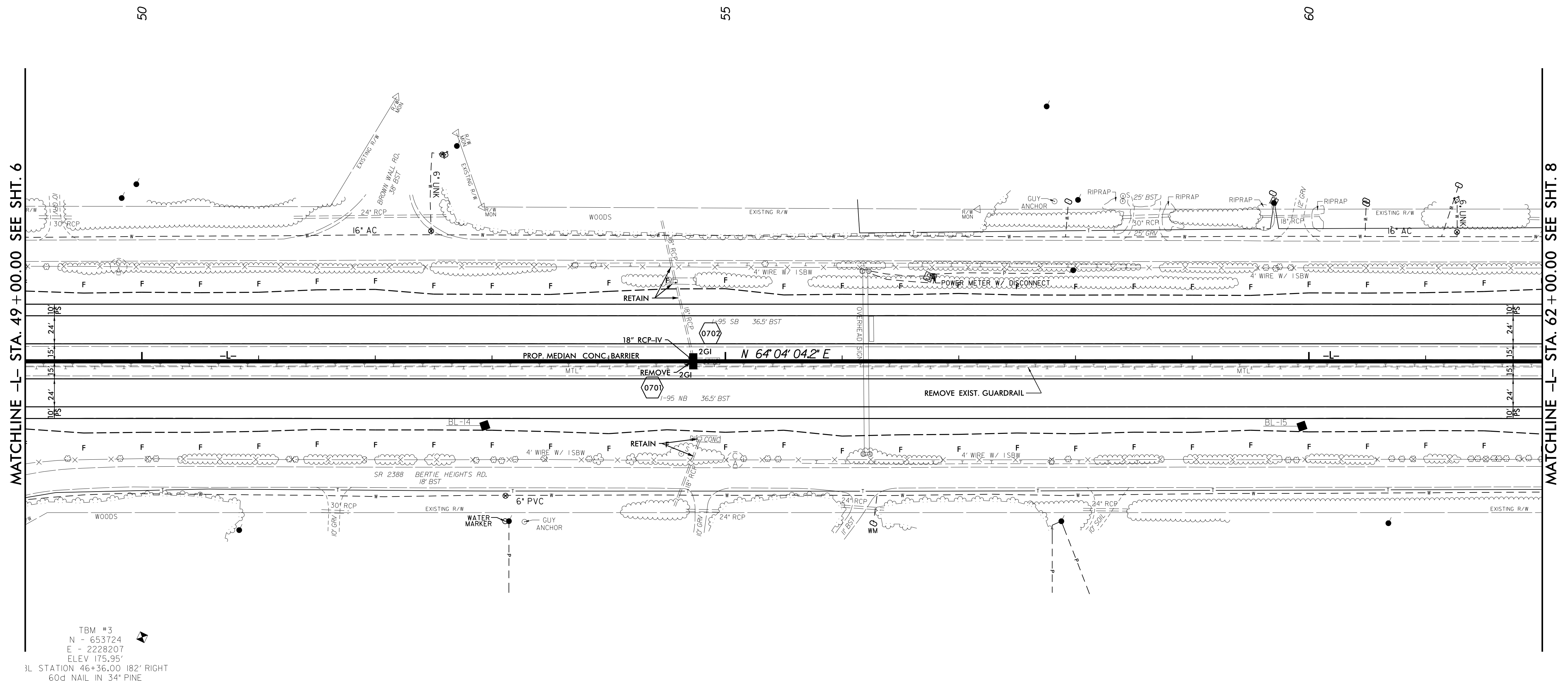


PROJECT REFERENCE NO. 1-5786	SHEET NO. 7
RW SHEET NO.	
ROADWAY DESIGN ENGINEER 6/6/2017 SEAL 21116 ENGINEER BOB A. MARY	HYDRAULICS ENGINEER 6/6/2017 SEAL 31977 ENGINEER KEVIN B. ALFORD
<p>Bob A. Mary</p> <p>Kevin B. Alford</p> <p>DOCUMENT NOT CONSIDERED FINAL UNLESS ALL SIGNATURES COMPLETED</p>	



MATCHLINE -L- STA. 49 + 00.00 SEE SHT. 6

MATCHLINE -L- STA. 62 + 00.00 SEE SHT. 8

TBM #3
 N - 653724
 E - 2228207
 ELEV 175.95'
 3L STATION 46+36.00 182° RIGHT
 60d NAIL IN 34\"/>

