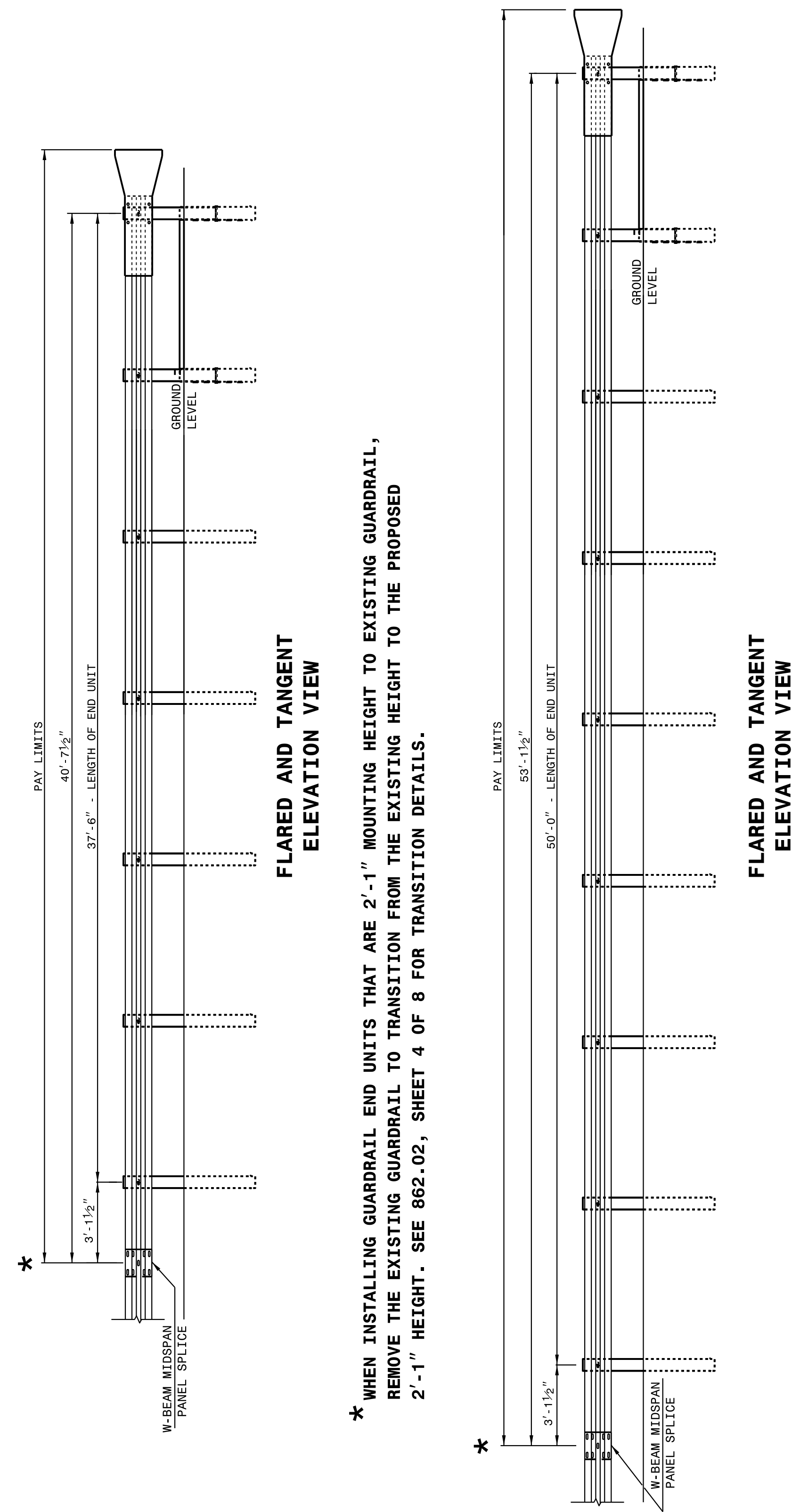


04-MAY-2017 15:25
 S:\Contracts\2017\Special Details\Standard Drawings\Details in Lieu of Standards\Division 8\862d01 862d03 862d02\862d02.dgn
 Jhowerton - N1_CSDP-24293

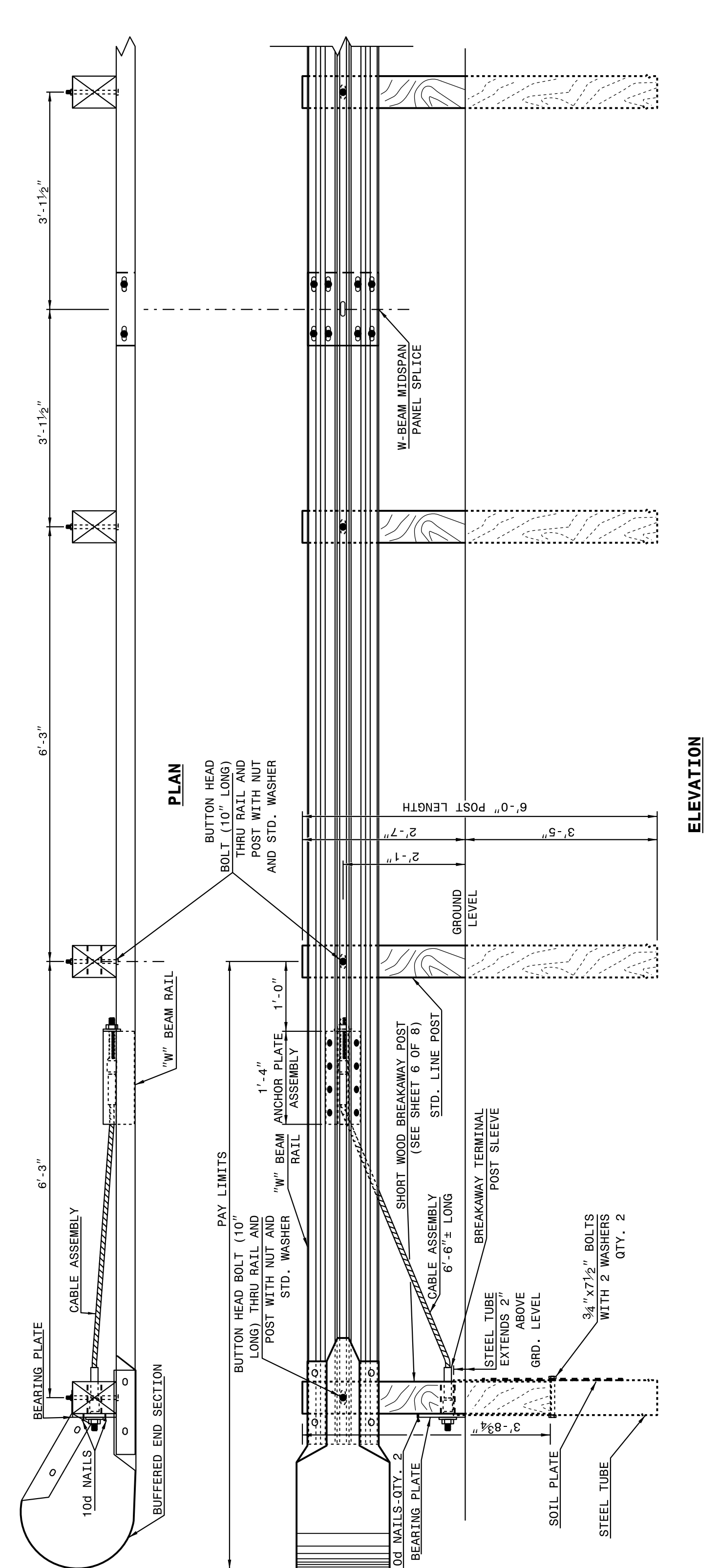
STATE OF NORTH CAROLINA
 DEPT. OF TRANSPORTATION
 DIVISION OF HIGHWAYS
 RALEIGH, N.C.
**ROADWAY DETAIL DRAWING FOR
 GUARDRAIL INSTALLATION**
 SHEET 2 OF 8
862D02



* WHEN INSTALLING GUARDRAIL END UNITS THAT ARE 2'-1" MOUNTING HEIGHT TO EXISTING GUARDRAIL, REMOVE THE EXISTING GUARDRAIL TO TRANSITION FROM THE EXISTING HEIGHT TO THE PROPOSED 2'-1" HEIGHT. SEE 862-02, SHEET 4 OF 8 FOR TRANSITION DETAILS.

STATE OF NORTH CAROLINA
 DEPT. OF TRANSPORTATION
 DIVISION OF HIGHWAYS
 RALEIGH, N.C.
**ROADWAY DETAIL DRAWING FOR
 GUARDRAIL INSTALLATION**
 SHEET 2 OF 8
862D02

STATE OF NORTH CAROLINA
 DEPT. OF TRANSPORTATION
 DIVISION OF HIGHWAYS
 RALEIGH, N.C.
**ROADWAY DETAIL DRAWING FOR
 GUARDRAIL INSTALLATION**
 SHEET 1 OF 8
862D02



TRAILING END UNIT ASSEMBLY
C.A.T.-1 SYSTEM

STATE OF NORTH CAROLINA
 DEPT. OF TRANSPORTATION
 DIVISION OF HIGHWAYS
 RALEIGH, N.C.
**ROADWAY DETAIL DRAWING FOR
 GUARDRAIL INSTALLATION**
 SHEET 1 OF 8
862D02

PROJECT REFERENCE NO. I-5786	SHEET NO. 2C-7
---------------------------------	-------------------

DOCUMENT NOT CONSIDERED FINAL UNLESS ALL SIGNATURES COMPLETED

CONTRACT STANDARDS AND DEVELOPMENT UNIT
 Office 919-707-6950 FAX 919-250-4119
SEE TITLE BLOCK
 ORIGINAL BY: J HOWERTON DATE: 06-22-12
 MODIFIED BY: DATE:
 CHECKED BY: DATE:
 FILE SPEC.:

