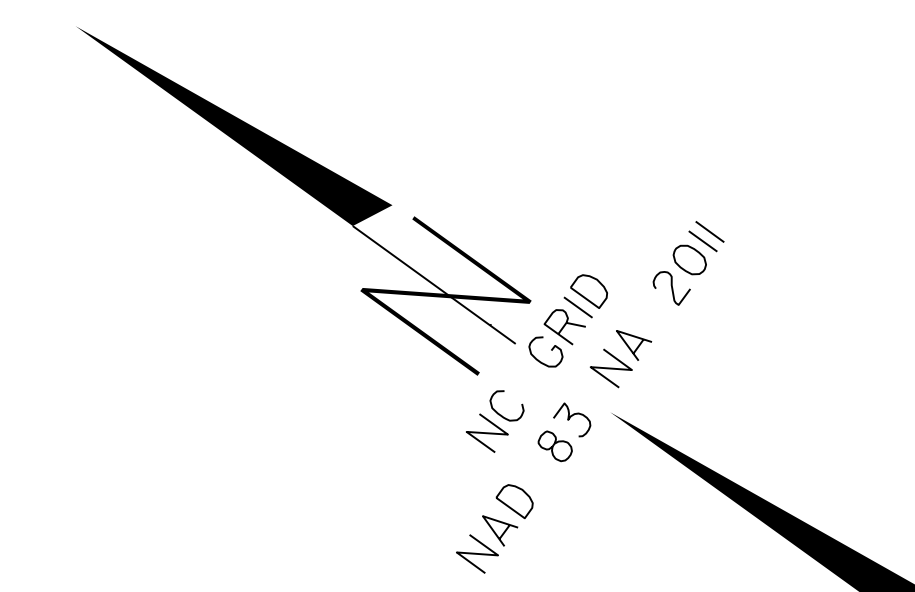


# SURVEY CONTROL SHEET I-5786

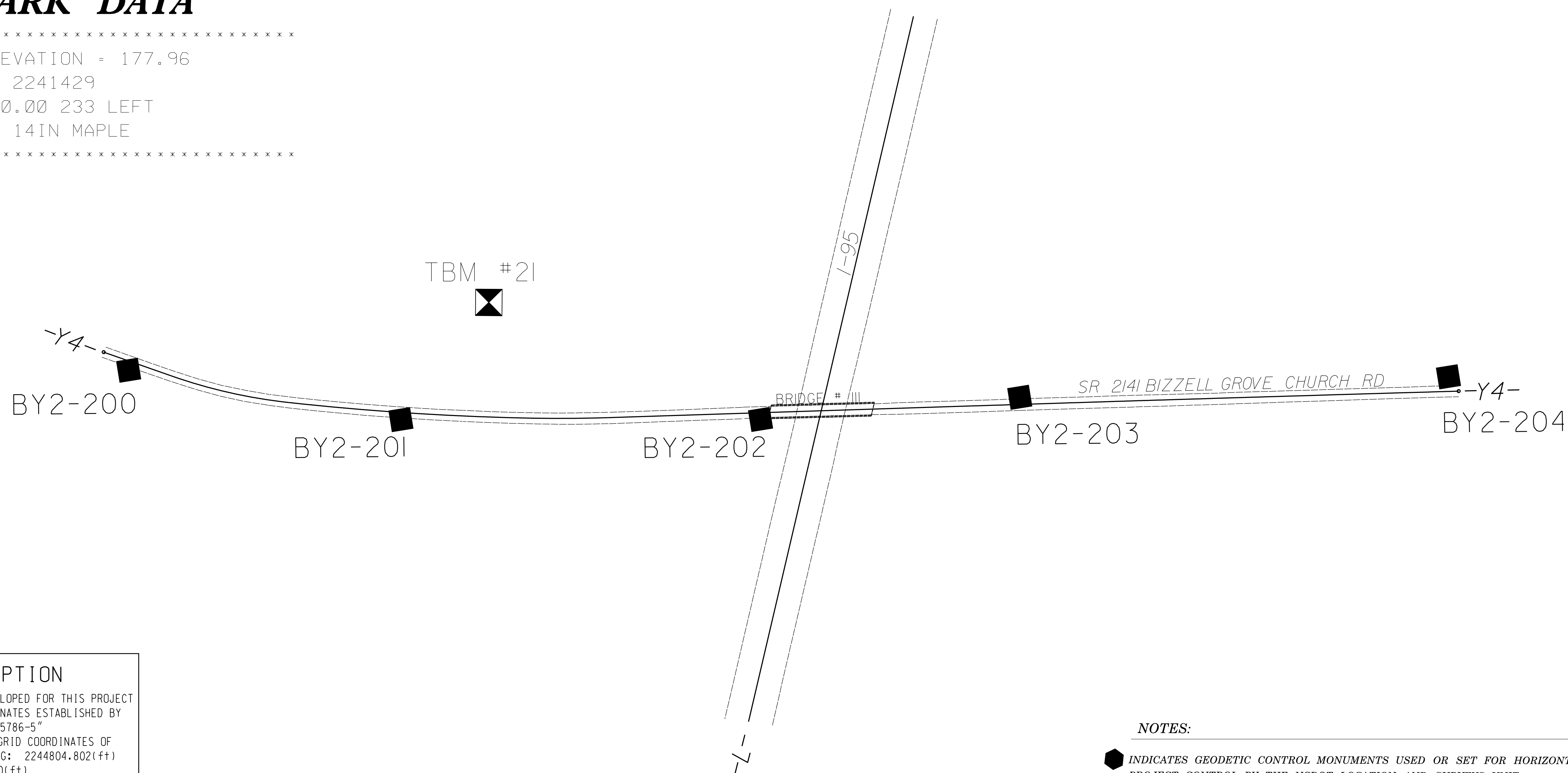
## BASELINE DATA

BY2	POINT	DESC.	NORTH	EAST	ELEVATION	Y4 STATION	OFFSET
	200	BY2-200	661274.3820	2240888.1740	185.99	6+09.65	18.12 RT
	201	BY2-201	660766.4610	2241131.0250	179.97	11+70.95	14.76 RT
	202	BY2-202	660173.5060	2241559.6940	200.32	19+01.64	13.85 RT
	203	BY2-203	659772.3530	2241904.9180	189.61	24+30.14	14.30 LT
	204	BY2-204	659082.4370	2242439.3190	185.26	33+02.77	17.27 LT



## BENCHMARK DATA

\*\*\*\*\*  
 TBM#21            ELEVATION = 177.96  
 N 660761        E 2241429  
 Y4 STATION 13+40.00 233 LEFT  
 RR SPIKE SET IN 14IN MAPLE  
 \*\*\*\*\*



### DATUM DESCRIPTION

THE LOCALIZED COORDINATE SYSTEM DEVELOPED FOR THIS PROJECT IS BASED ON THE STATE PLANE COORDINATES ESTABLISHED BY NCDOT FOR MONUMENT "15786-5"  
 WITH NAD 83/NA 2011 STATE PLANE GRID COORDINATES OF  
 NORTHING: 661128.741(±) EASTING: 2244804.802(±)  
 ELEVATION: 175.960(±)  
 THE AVERAGE COMBINED GRID FACTOR USED ON THIS PROJECT (GROUND TO GRID) IS: 0.9998843704  
 THE N.C. LAMBERT GRID BEARING AND LOCALIZED HORIZONTAL GROUND DISTANCE FROM "15786-5" TO -L- STATION 09+20.00 IS  
 S66°13'07.59"W 22261.089  
 ALL LINEAR DIMENSIONS ARE LOCALIZED HORIZONTAL DISTANCES  
 VERTICAL DATUM USED IS NAVD 88

### NOTES:

- ◆ INDICATES GEODETIC CONTROL MONUMENTS USED OR SET FOR HORIZONTAL AND VERTICAL PROJECT CONTROL BY THE NCDOT LOCATION AND SURVEYS UNIT. PROJECT CONTROL ESTABLISHED USING GNSS (GLOBAL NAVIGATION SATELLITE SYSTEM).
- THE CONTROL DATA FOR THIS PROJECT CAN BE FOUND ELECTRONICALLY BY SELECTING PROJECT CONTROL DATA AT:  
[HTTPS://CONNECT.NCDOT.GOV/RESOURCES/LOCATION/](https://connect.ncdot.gov/resources/location/)
- THE FILES TO BE FOUND ARE AS FOLLOWS:  
 15786\_LS\_CONTROL.TXT

NOTE: DRAWING NOT TO SCALE