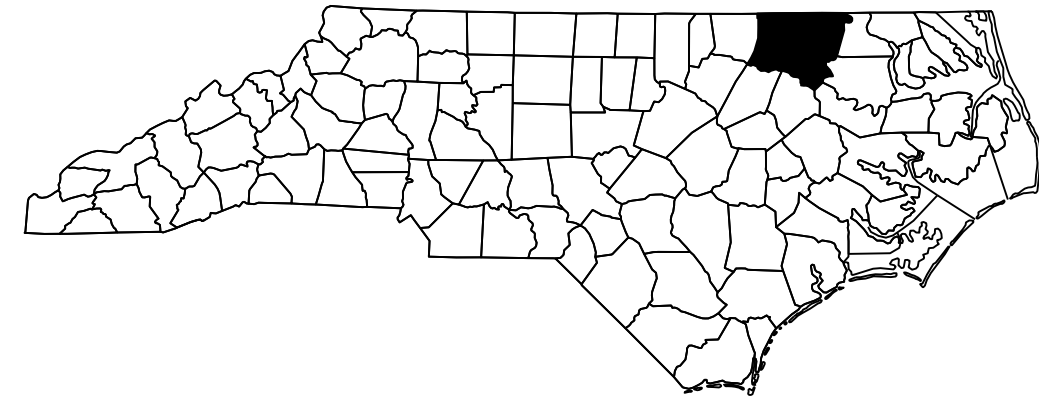


PROJECT: I-5839

CONTRACT: C203931



STATE OF NORTH CAROLINA
DIVISION OF HIGHWAYS

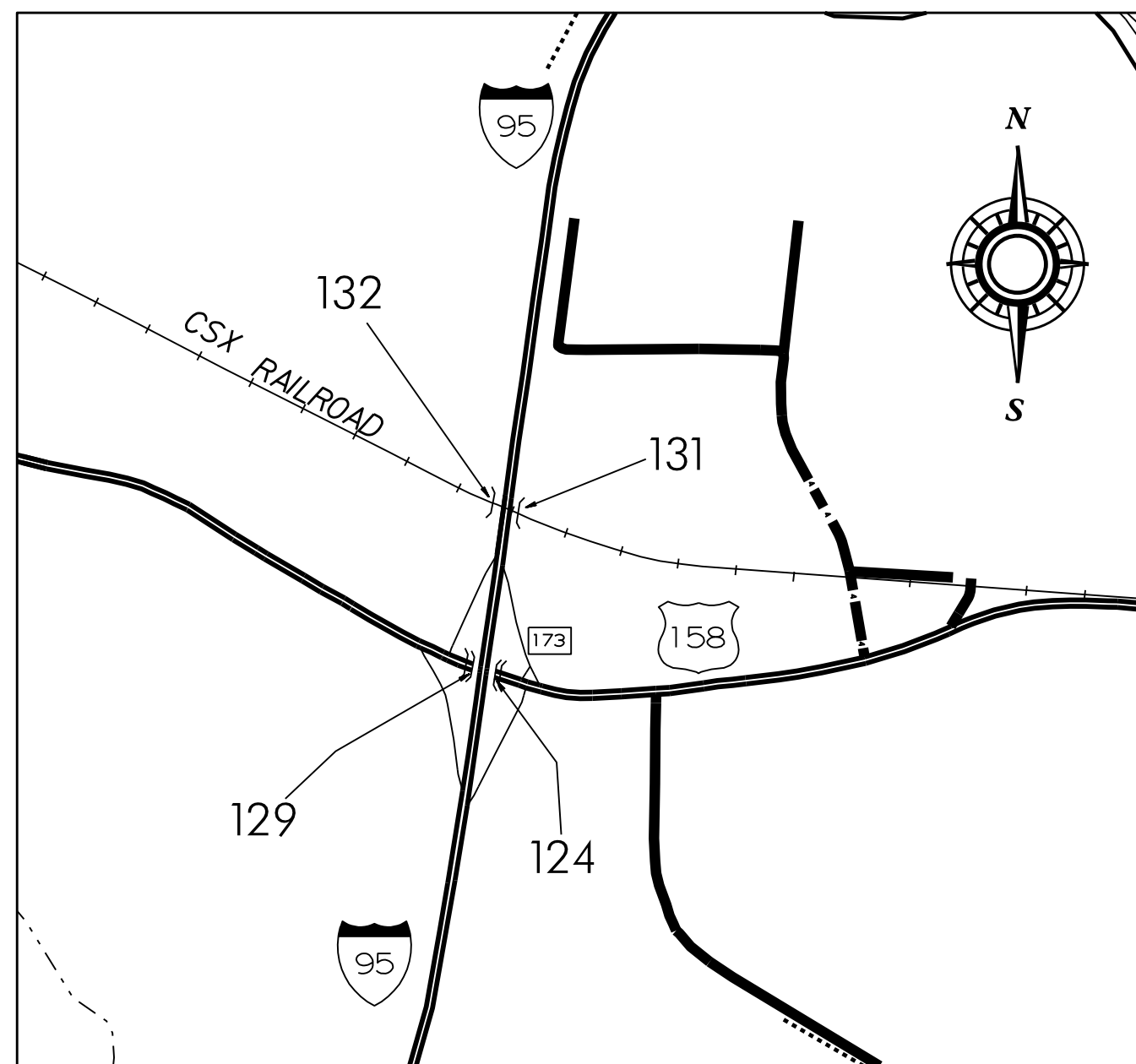
HALIFAX & NORTHAMPTON COUNTIES

STATE	STATE PROJECT REFERENCE NO.	SHEET NO.	TOTAL SHEETS
N.C.	I-5839	1	42
STATE PROJ. NO.	F.A. PROJ. NO.	DESCRIPTION	
53045.1.1	NHPIM-0095(036)	P.E.	
53045.3.1	NHPIM-0095(036)	CONST.	

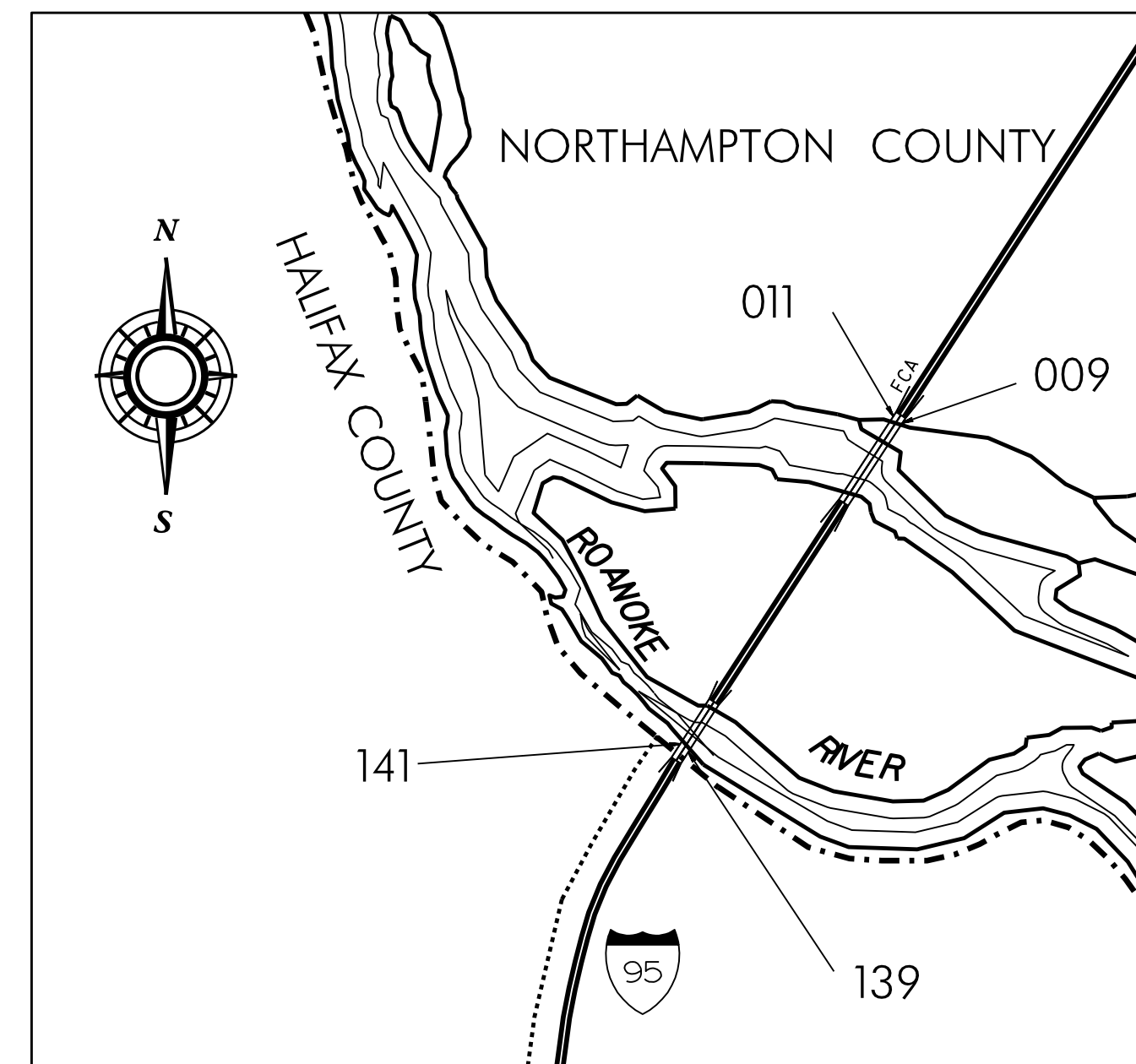
LOCATION: HALIFAX COUNTY:
 BRIDGE #124 ON I-95 NBL OVER US 158
 BRIDGE #129 ON I-95 SBL OVER US 158
 BRIDGE #131 ON I-95 NBL OVER CSX RAILROAD AND SR 1742 (BECKER DRIVE).
 BRIDGE #132 ON I-95 SBL OVER CSX RAILROAD AND SR 1742 (BECKER DRIVE).
 BRIDGE #139 ON I-95 NBL OVER ROANOKE RIVER
 BRIDGE #141 ON I-95 SBL OVER ROANOKE RIVER

NORTHAMPTON COUNTY:
 BRIDGE #009 ON I-95 NBL OVER ROANOKE RIVER
 BRIDGE #011 ON I-95 SBL OVER ROANOKE RIVER

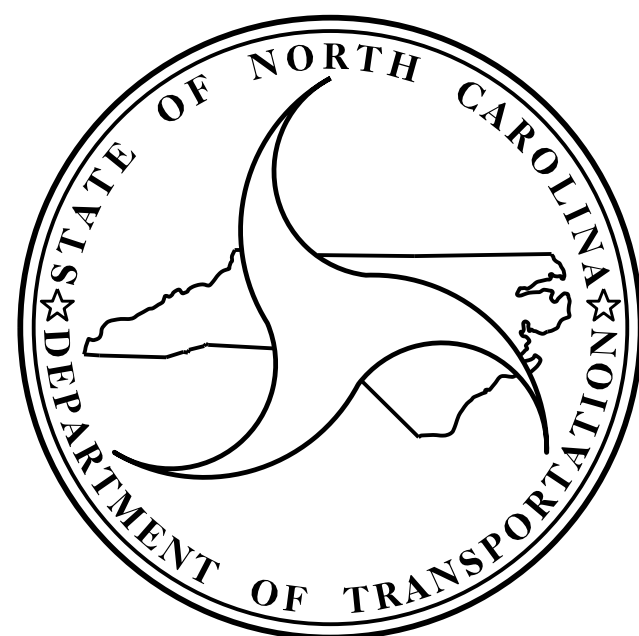
TYPE OF WORK: BRIDGE PRESERVATION WITH EPOXY OVERLAY SYSTEM, JOINT DEMOLITION, CONCRETE BRIDGE DECK CRACK SEALING, SILANE BARRIER RAIL TREATMENT, MODULAR JOINT REPLACEMENT, SUPERSTRUCTURE REPAIRS, AND SUBSTRUCTURE REPAIRS.



VICINITY MAP : HALIFAX COUNTY



VICINITY MAP : HALIFAX COUNTY - NORTHAMPTON COUNTY



DESIGN DATA

HALIFAX COUNTY

BRIDGE #124 ADT 2013	=	17,500
BRIDGE #129 ADT 2013	=	17,500
BRIDGE #131 ADT 2013	=	17,500
BRIDGE #132 ADT 2013	=	17,500
BRIDGE #139 ADT 2013	=	17,500
BRIDGE #141 ADT 2013	=	17,500

NORTHAMPTON COUNTY

BRIDGE #009 ADT 2013	=	17,500
BRIDGE #011 ADT 2013	=	17,500

PROJECT LENGTH

HALIFAX COUNTY

BRIDGE #124	=	0.035 MILES
BRIDGE #129	=	0.035 MILES
BRIDGE #131	=	0.041 MILES
BRIDGE #132	=	0.041 MILES
BRIDGE #139	=	0.042 MILES
BRIDGE #141	=	0.042 MILES

NORTHAMPTON COUNTY

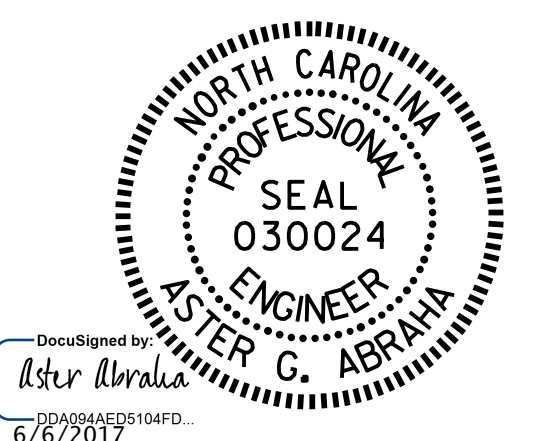
BRIDGE #009	=	0.215 MILES
BRIDGE #011	=	0.215 MILES

Prepared in the Office of:
DEPARTMENT OF TRANSPORTATION
DIVISION OF HIGHWAYS
 STRUCTURES MANAGEMENT UNIT - PRESERVATION & REPAIR GROUP
 1000 BIRCH RIDGE DR. RALEIGH, N.C. 27610

GREG DICKEY, P.E.
 PROJECT ENGINEER

2012 STANDARD SPECIFICATIONS

LETTING DATE:
 JULY 18, 2017



ASTER G. ABRAHA, P.E.
 PROJECT DESIGN ENGINEER