

### DIVIDED MEDIANS WITH WIDTHS 46' OR GREATER

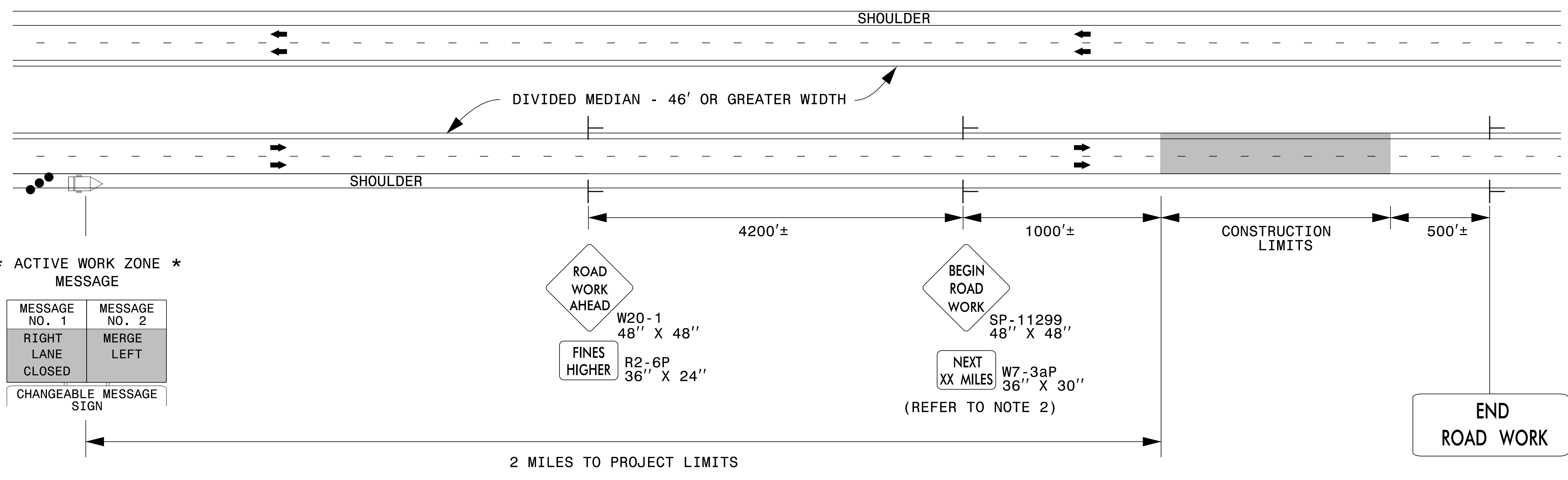
\* NOTE: ADVANCE THIS CMS CONTINUOUSLY AS WORK OPERATIONS PROGRESS.

\* INACTIVE WORK ZONE \* MESSAGE

MESSAGE NO. 1	MESSAGE NO. 2
ROAD WORK	2 MILES AHEAD
CHANGEABLE MESSAGE SIGN	

\* ACTIVE WORK ZONE \* MESSAGE

MESSAGE NO. 1	MESSAGE NO. 2
RIGHT LANE CLOSED	MERGE LEFT
CHANGEABLE MESSAGE SIGN	



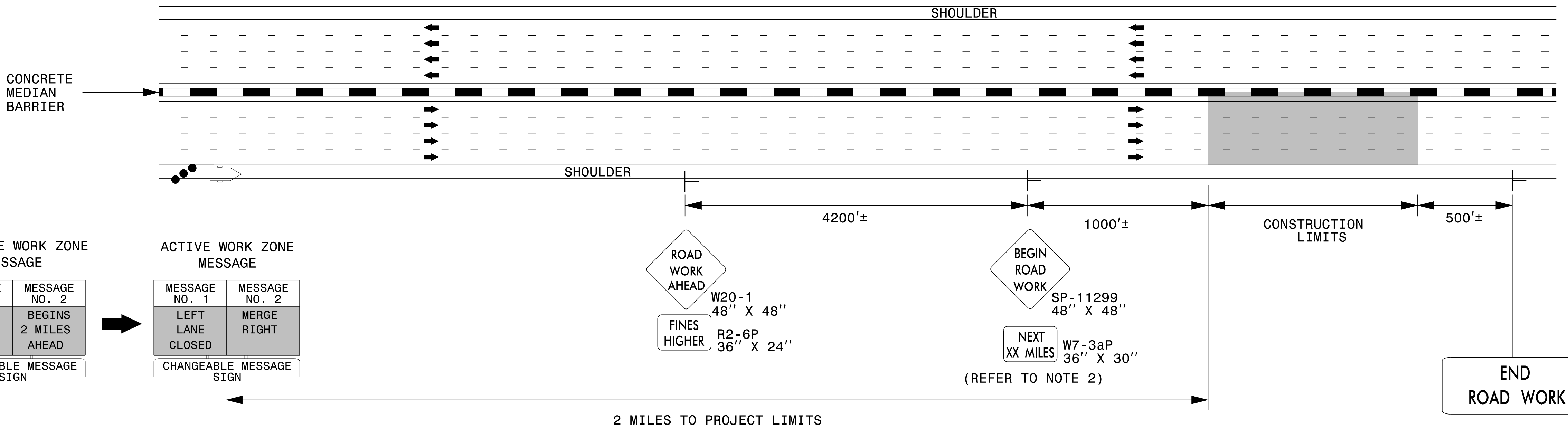
### DIVIDED MEDIANS WITH WIDTHS LESS THAN 46' OR WITH PERMANENT MEDIAN BARRIER

INACTIVE WORK ZONE MESSAGE

MESSAGE NO. 1	MESSAGE NO. 2
ROAD WORK	BEGINS 2 MILES AHEAD
CHANGEABLE MESSAGE SIGN	

ACTIVE WORK ZONE MESSAGE

MESSAGE NO. 1	MESSAGE NO. 2
LEFT LANE CLOSED	MERGE RIGHT
CHANGEABLE MESSAGE SIGN	



#### NOTES

1. THIS DRAWING IS TO BE USED IN CONJUNCTION WITH THE WORK ZONE VARIABLE SPEED LIMIT USING DIGITAL SPEED LIMIT SIGNS FOR INTERSTATE/FREEWAY RESURFACING PROJECTS DETAIL.
2. FOR SIGN W7-3aP, ROUND TO THE NEAREST MILE.
3. FOR ENTRANCE AND EXIT RAMP, REFER TO RSD 1101.01, SHEET 1, DETAIL B & C.
4. FOR ADDITIONAL NOTES, REFER TO RSD 1101.01, SHEET 1.

#### LEGEND

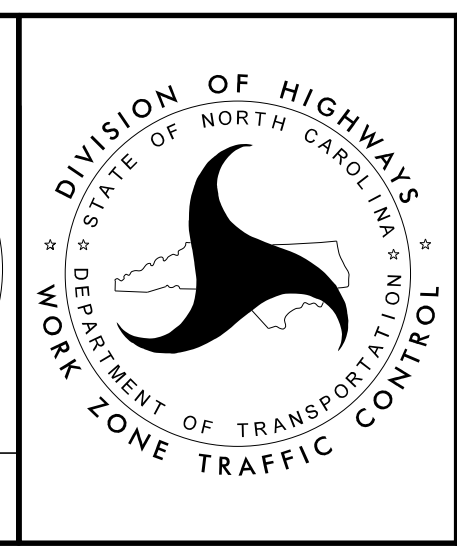
- CHANGEABLE MESSAGE SIGN (CMS)
- STATIONARY SIGN
- DIRECTION OF TRAFFIC FLOW
- TRAFFIC DRUM

APPROVED: *Steve Kite*  
DATE: 2/23/2017

DocuSigned by:  
E27CE30E10FC442...

SEAL  
022104  
JOHN S. KITE, II  
ENGINEER

**DOCUMENT NOT CONSIDERED FINAL  
UNLESS ALL SIGNATURES COMPLETED**



STATIONARY ADVANCE  
WARNING SIGNS FOR  
INTERSTATE/FREEWAY  
RESURFACING PROJECTS

2/23/2017 S:\TMD\WZTC\DesignGroup3\Squad3B\0ats\Interstate Resurfacing Provisions and Details\Keg\Resurfacing\_AdvWarn\_HSpd.dgn User:kedais