

8/17/99

# I-95 AND US 158

100' 0' 100' 200'

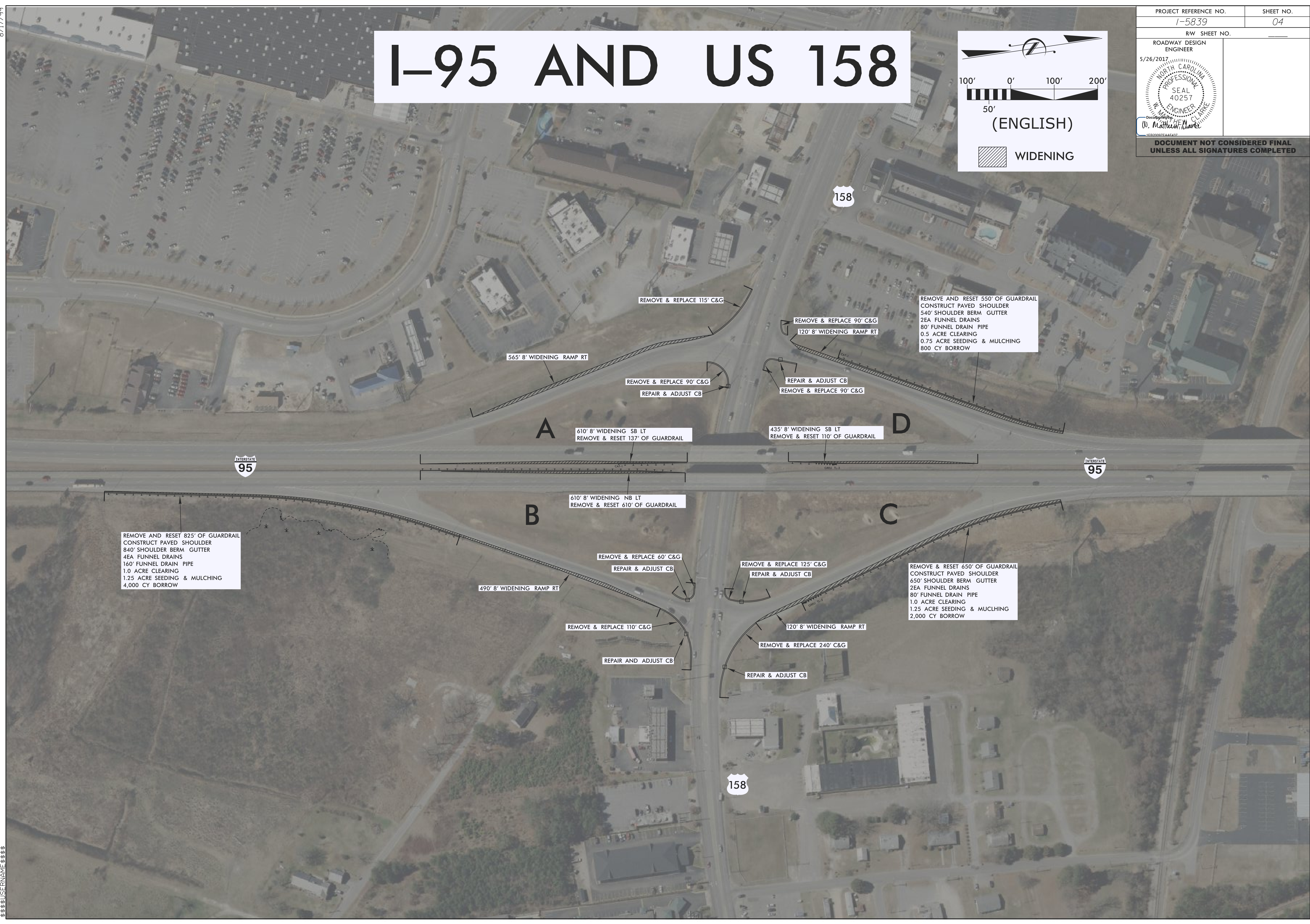
50'

(ENGLISH)

WIDENING

PROJECT REFERENCE NO. I-5839	SHEET NO. 04
RW SHEET NO.	
ROADWAY DESIGN ENGINEER	
5/26/2017	
<p><b>DOCUMENT NOT CONSIDERED FINAL</b> UNLESS ALL SIGNATURES COMPLETED</p>	

SECTION 01100 - CONCRETE



REMOVE AND RESET 825' OF GUARDRAIL  
CONSTRUCT PAVED SHOULDER  
840' SHOULDER BERM GUTTER  
4EA FUNNEL DRAINS  
160' FUNNEL DRAIN PIPE  
1.0 ACRE CLEARING  
1.25 ACRE SEEDING & MULCHING  
4,000 CY BORROW

REMOVE AND RESET 650' OF GUARDRAIL  
CONSTRUCT PAVED SHOULDER  
650' SHOULDER BERM GUTTER  
2EA FUNNEL DRAINS  
80' FUNNEL DRAIN PIPE  
1.0 ACRE CLEARING  
1.25 ACRE SEEDING & MULCHING  
2,000 CY BORROW

REMOVE AND RESET 550' OF GUARDRAIL  
CONSTRUCT PAVED SHOULDER  
540' SHOULDER BERM GUTTER  
2EA FUNNEL DRAINS  
80' FUNNEL DRAIN PIPE  
0.5 ACRE CLEARING  
0.75 ACRE SEEDING & MULCHING  
800 CY BORROW