

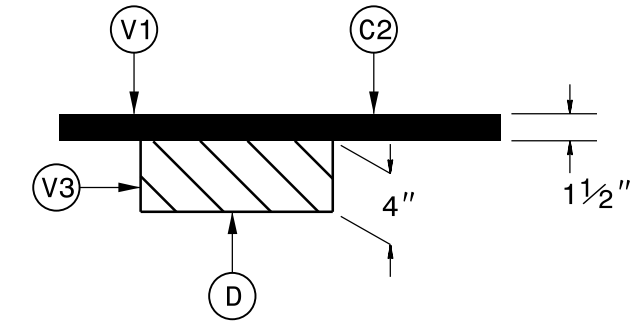
TYPICAL SECTION NO. 11

TO BE USED ON MAPS 7, 12

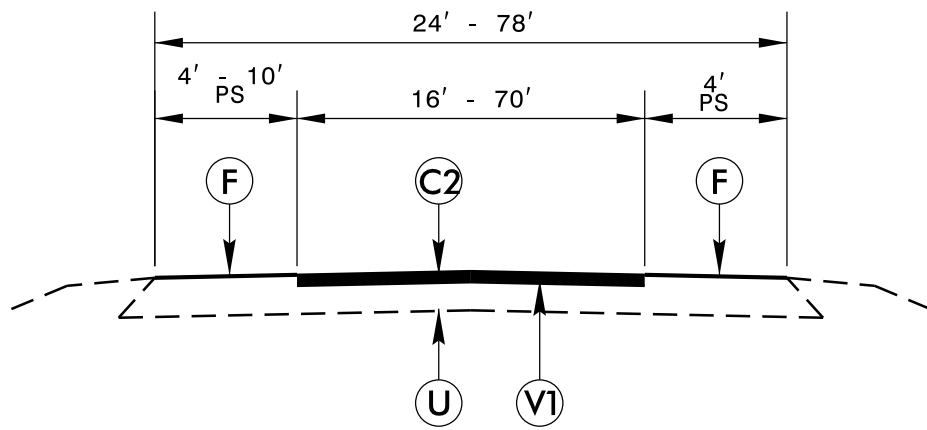
MAP 7: STA. 12+30 TO STA. 19+41

MAP 12: STA. 14+70 TO STA. 19+70

4" MILLING FOR PATCHING DETAIL



TO BE USED IN AREAS AS DIRECTED BY THE ENGINEER IN CONJUNCTION WITH: MAPS 1, 5, 10



TYPICAL SECTION NO. 12

TO BE USED ON MAPS 8, 9, 13, 14

MAP 13: STA. 14+60 TO STA. 51+75

MAP 14: STA. 10+00 TO STA. 31+12

PAVEMENT SCHEDULE

C1	PROP. APPROX. 1 1/2" ASPHALT CONCRETE SURFACE COURSE, TYPE S9.5B, AT AN AVG RATE OF 168 LBS PER SQ. YD
C2	PROP. APPROX. 1 1/2" ASPHALT CONCRETE SURFACE COURSE, S9.5C AT AN AVG. RATE OF 168 LBS PER SQ. YD.
D	PROP. APPROX. 4" ASPHALT CONCRETE INTERMEDIATE COURSE, I19.0C AT AN AVG RATE OF 456 LBS PER SQ. YD. IN ONE LIFT
F	PROPOSED FOG SEAL TO BE APPLIED TO THE EXISTING ASPHALT SHOULDER
R	EXISTING CONCRETE STRUCTURE
U	EXISTING PAVEMENT
V1	1 1/2" MILLING
V2	MILLED RUMBLE STRIP
V3	4" MILLING FOR PATCHING
Y	PROPOSED DIAMOND GRINDING