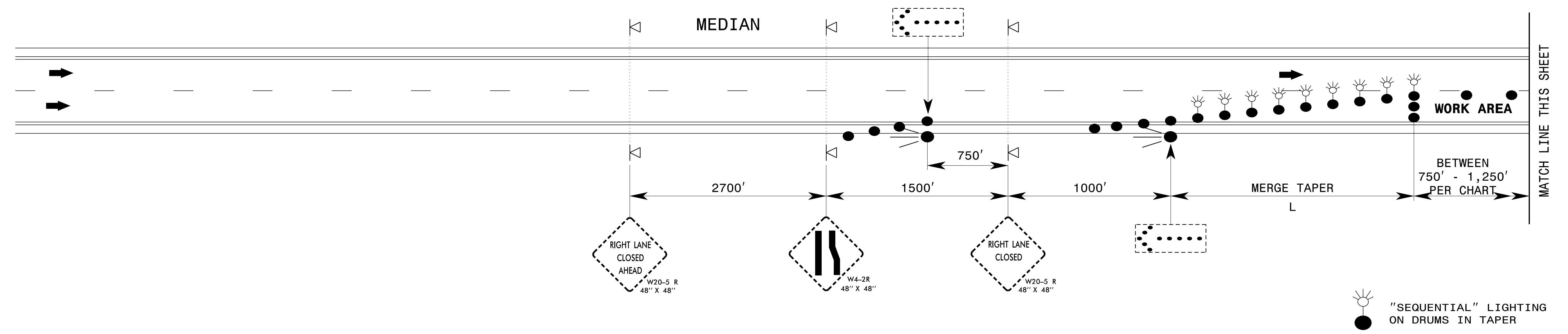
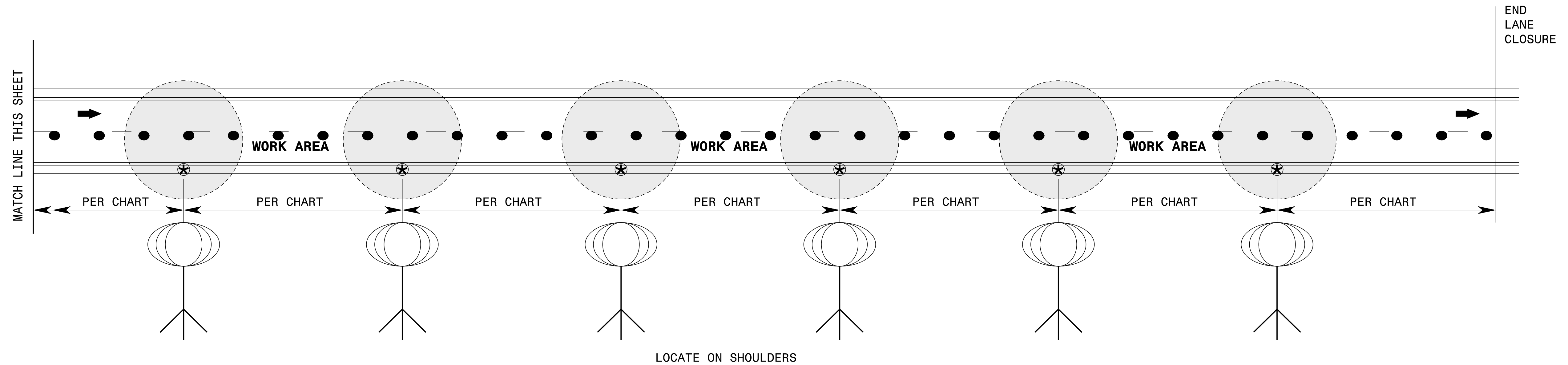


ADVANCE WARNING AREA



WORK ZONE AREA



LOCATE ON SHOULDERS

SPACING CHART

LIGHT OUTPUT (LUMENS)	MINIMUM LIGHTED FIXTURE AREA (SQUARE FEET)	MAXIMUM SPACING (FEET)	LIGHT UNITS (PER MILE)
50,000 TO 65,000	5.5	750'	6
66,000 TO 80,000	5.5	1,000'	5
81,000 TO 100,000	36	1,250'	4

NOTES

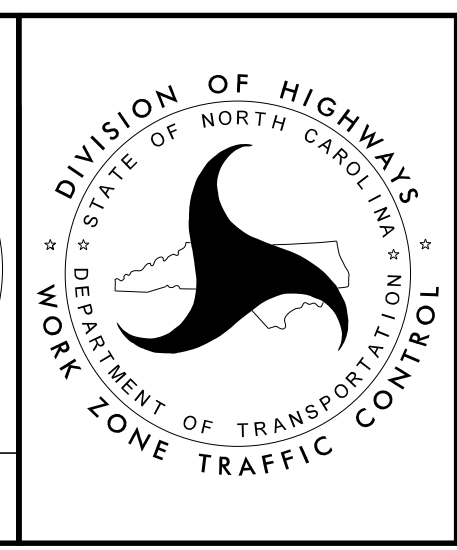
- 1) SPACE LIGHT UNITS ACCORDING TO THE CHART.
- 2) EACH LIGHT UNIT SHALL BE CAPABLE OF ELEVATING TO A MINIMUM HEIGHT OF 14' ABOVE THE PAVEMENT.
- 3) PLACE ON PAVED SHOULDER IF POSSIBLE.

APPROVED: *Steve Kite*
 DATE: 3/17/2017

DocuSigned by:
 E27CE30E1DFC442...

SEAL
 022104
 JOHN S. KITE, II
 ENGINEER

**DOCUMENT NOT CONSIDERED FINAL
 UNLESS ALL SIGNATURES COMPLETED**



**SEQUENTIAL FLASHING
 WARNING LIGHTS
 AND
 WORK ZONE
 PRESENCE LIGHTING**

3/17/2017 S:\TMU\WZTC\DesignGroup3\Squad3B\Data\Inter-state Resurfacing Provisions and Details\Detail Drawings\Sequential.and.Presence Lighting_20170227.dgn User:kedais