

DIVIDED MEDIANS WITH WIDTHS 46' OR GREATER

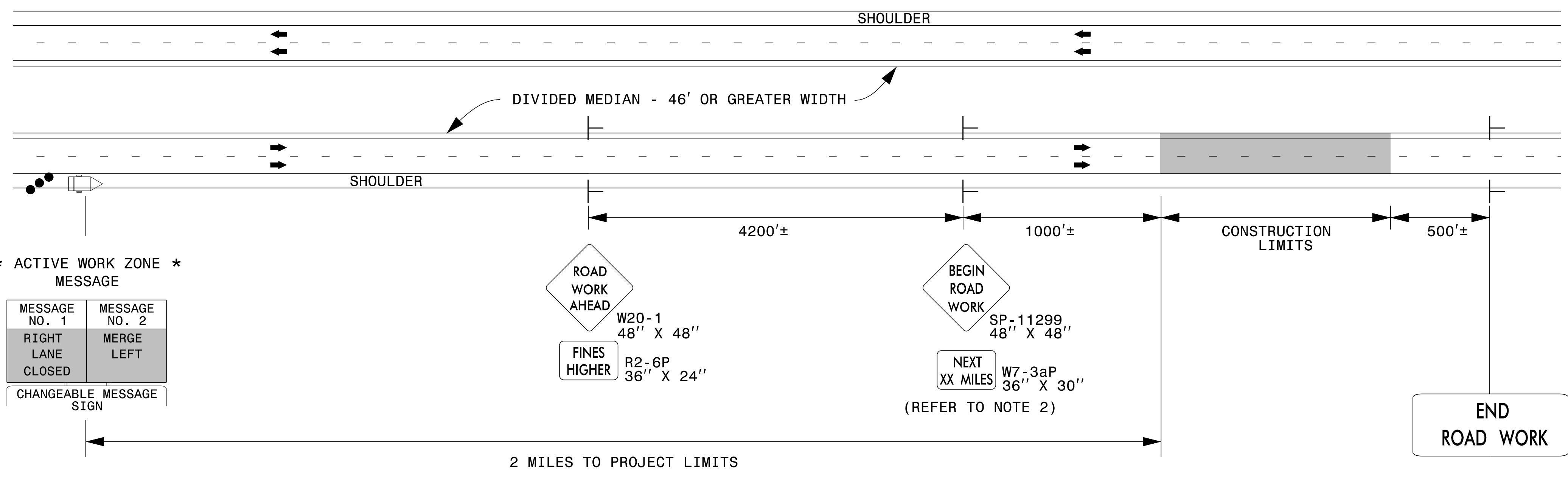
* NOTE: ADVANCE THIS CMS CONTINUOUSLY AS WORK OPERATIONS PROGRESS.

* INACTIVE WORK ZONE MESSAGE

MESSAGE NO. 1	MESSAGE NO. 2
ROAD WORK	2 MILES AHEAD
CHANGEABLE MESSAGE SIGN	

* ACTIVE WORK ZONE MESSAGE

MESSAGE NO. 1	MESSAGE NO. 2
RIGHT LANE CLOSED	MERGE LEFT
CHANGEABLE MESSAGE SIGN	



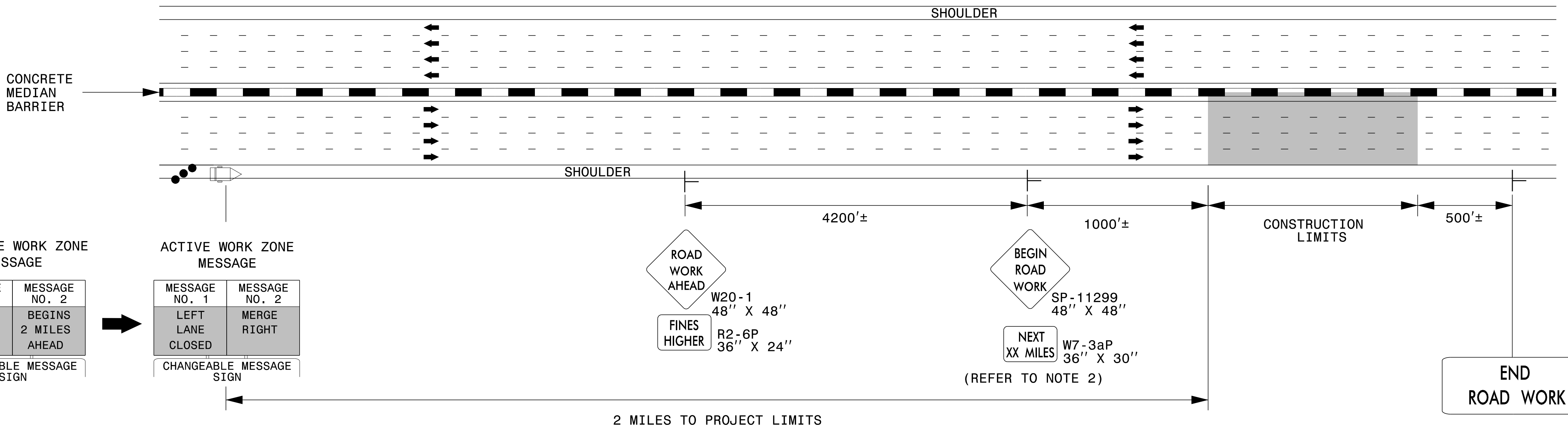
DIVIDED MEDIANS WITH WIDTHS LESS THAN 46' OR WITH PERMANENT MEDIAN BARRIER

INACTIVE WORK ZONE MESSAGE

MESSAGE NO. 1	MESSAGE NO. 2
ROAD WORK	BEGINS 2 MILES AHEAD
CHANGEABLE MESSAGE SIGN	

ACTIVE WORK ZONE MESSAGE

MESSAGE NO. 1	MESSAGE NO. 2
LEFT LANE CLOSED	MERGE RIGHT
CHANGEABLE MESSAGE SIGN	



NOTES

1. THIS DRAWING IS TO BE USED IN CONJUNCTION WITH THE WORK ZONE VARIABLE SPEED LIMIT USING DIGITAL SPEED LIMIT SIGNS FOR INTERSTATE/FREEWAY RESURFACING PROJECTS DETAIL.
2. FOR SIGN W7-3aP, ROUND TO THE NEAREST MILE.
3. FOR ENTRANCE AND EXIT RAMP, REFER TO RSD 1101.01, SHEET 1, DETAIL B & C.
4. FOR ADDITIONAL NOTES, REFER TO RSD 1101.01, SHEET 1.

LEGEND

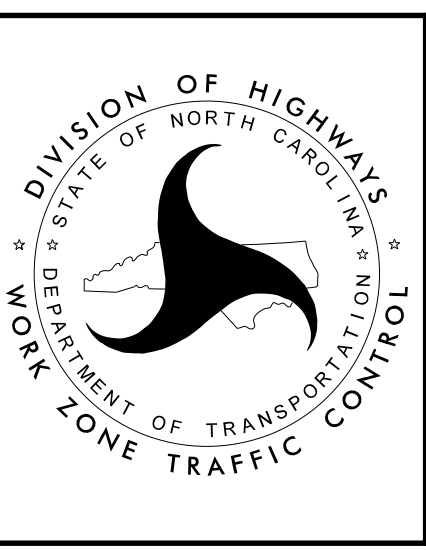
- CHANGEABLE MESSAGE SIGN (CMS)
- STATIONARY SIGN
- DIRECTION OF TRAFFIC FLOW
- TRAFFIC DRUM

APPROVED: *Steve Kite*
 DATE: 2/23/2017

DocuSigned by:
 E27CE30E10FC442...

SEAL 022104
 JOHN S. KITE, II
 PROFESSIONAL ENGINEER

DOCUMENT NOT CONSIDERED FINAL UNLESS ALL SIGNATURES COMPLETED



STATIONARY ADVANCE WARNING SIGNS FOR INTERSTATE/FREEWAY RESURFACING PROJECTS

2/23/2017 S:\TMD\WZTC\DesignGroup3\Squad3B\0ats\Interstate Resurfacing Provisions and Details\Keg\Resurfacing_AdvWarn_HSpd.dgn User:kedais