

PROJECT REFERENCE NO. B-5332	SHEET NO. EC-5/CONST.4
R/W SHEET NO.	HYDRAULICS ENGINEER
ROADWAY DESIGN ENGINEER	

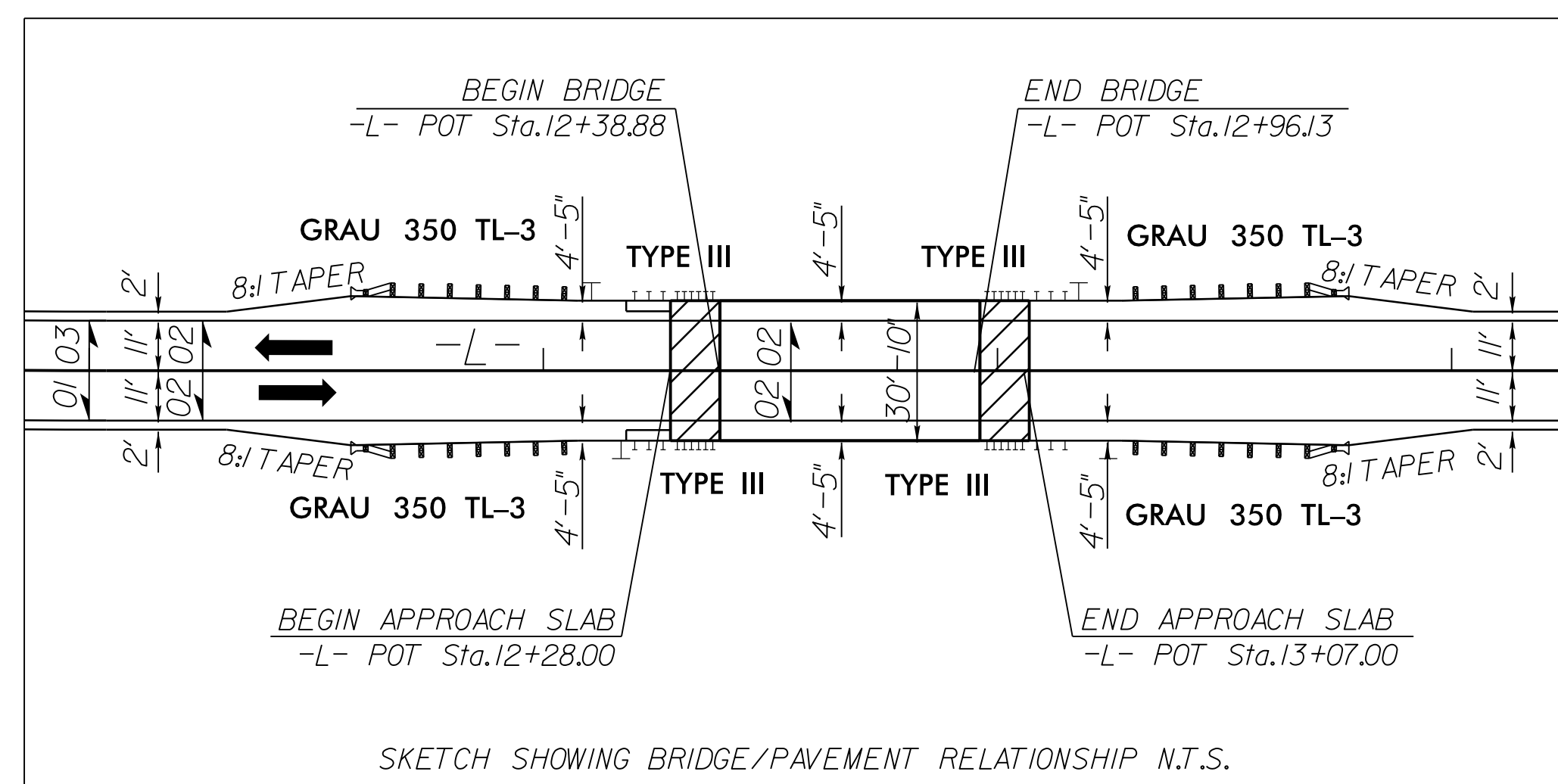
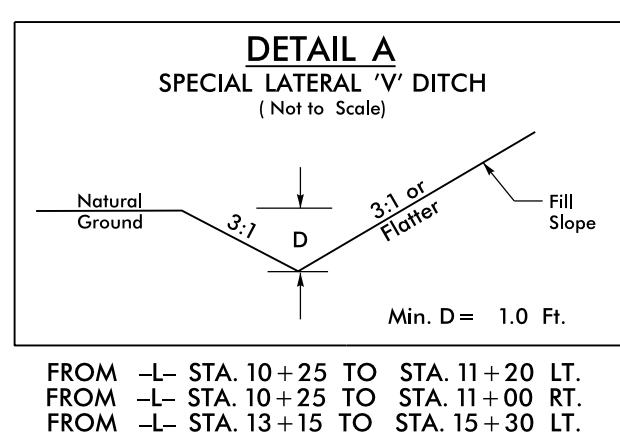
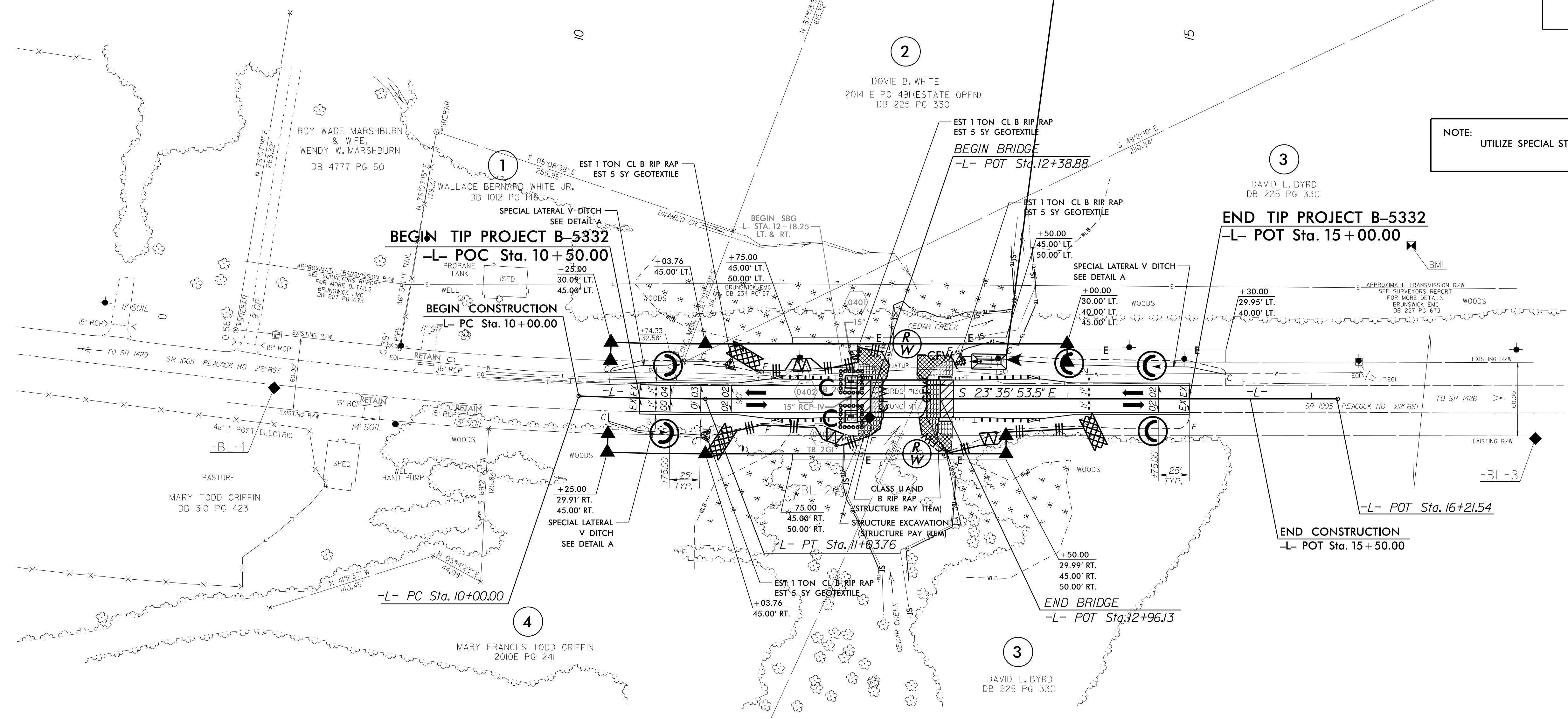
-L- CURVE DATA  
 PI Sta 10+51.89  
 BK = S 21°00'48.2" E  
 Δ = 2°35'05.3" (LT)  
 D = 2°29'28.0"  
 L = 103.76'  
 T = 51.89'  
 R = 2,300.00'  
 SE = 05  
 RO = SEE PLANS

Place Matting for Erosion Control  
 on Slopes Adjacent to Permitted  
 Wetlands as Work Allows.

27 x 13 x 3  
 1.5 inch Skimmer  
 with 0.375 inch  
 Orifice Diameter  
 4 ft. weir  
 ID 4.1F

NAD 83/NA 2011

NOTE:  
 UTILIZE SPECIAL STILLING BASIN(S) AS APPLICABLE.



FOR -L- PROFILE, SEE SHEET NO. 5  
 FOR STRUCTURE PLANS, SEE SHEETS S-1 THRU S-2

REVISIONS

8/17/99

10-APR-2017 15:07  
 P:\E\2017\m\ec\B5332-EC.psh-4.dgn  
 P:\E\2017\m\ec\B5332-EC.psh-4.dgn  
 P:\E\2017\m\ec\B5332-EC.psh-4.dgn