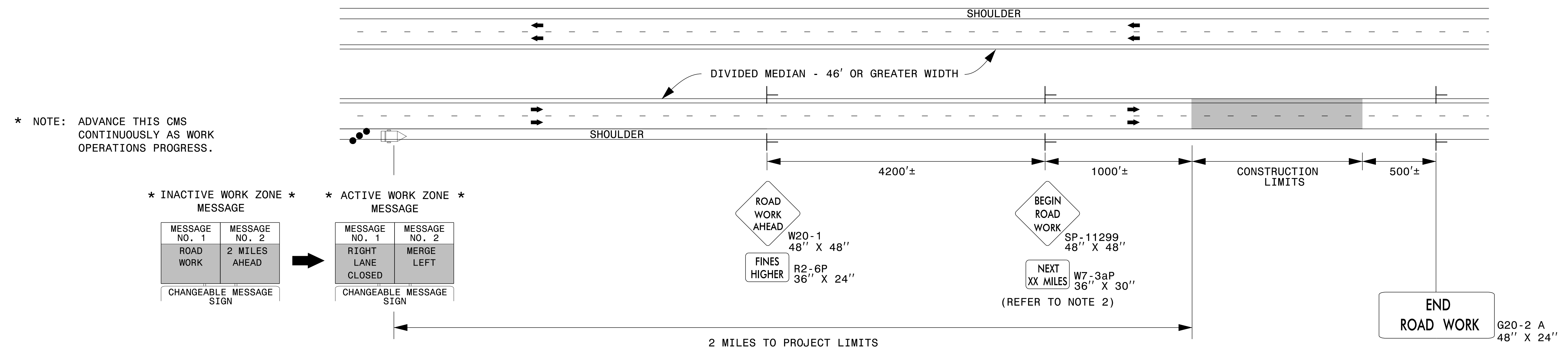
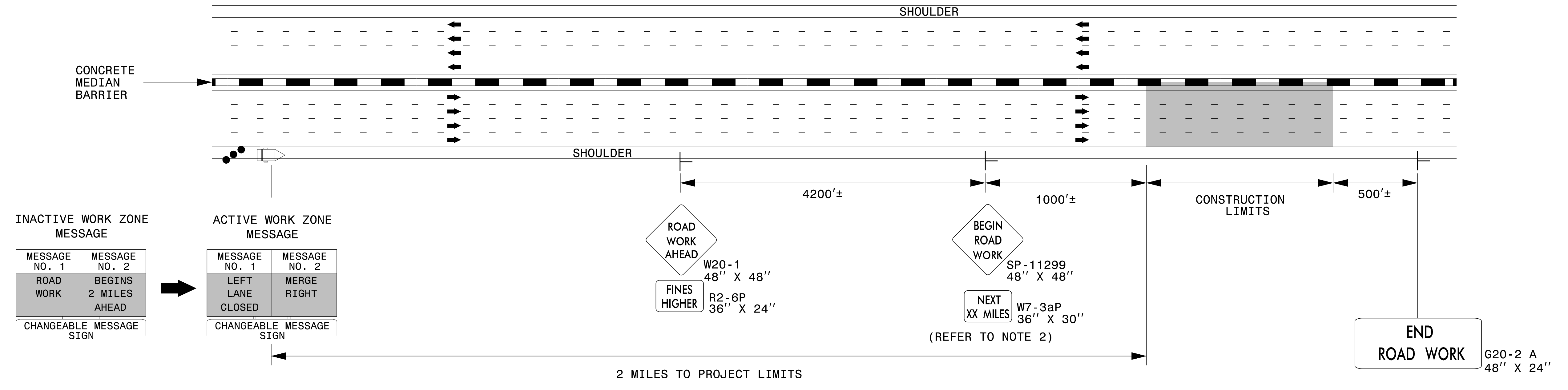


DIVIDED MEDIANS WITH WIDTHS 46' OR GREATER



DIVIDED MEDIANS WITH WIDTHS LESS THAN 46' OR WITH PERMANENT MEDIAN BARRIER



NOTES

1. THIS DRAWING IS TO BE USED IN CONJUNCTION WITH THE WORK ZONE VARIABLE SPEED LIMIT USING DIGITAL SPEED LIMIT SIGNS FOR INTERSTATE/FREEWAY RESURFACING PROJECTS DETAIL.
2. FOR SIGN W7-3aP, ROUND TO THE NEAREST MILE.
3. FOR ENTRANCE AND EXIT RAMP, REFER TO RSD 1101.01, SHEET 1, DETAIL B & C.
4. FOR ADDITIONAL NOTES, REFER TO RSD 1101.01, SHEET 1.

LEGEND

- CHANGEABLE MESSAGE SIGN (CMS)
- STATIONARY SIGN
- DIRECTION OF TRAFFIC FLOW
- TRAFFIC DRUM

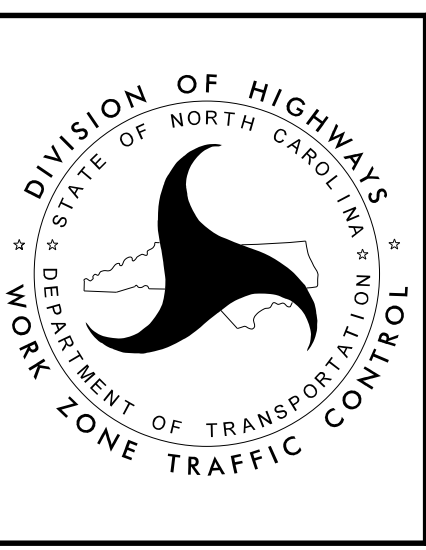
APPROVED: *Steve Kite*

DATE: 2/23/2017

DocuSigned by:
E27CE30E10FC442...

SEAL
022104
JOHN S. KITE, II
ENGINEER

DOCUMENT NOT CONSIDERED FINAL UNLESS ALL SIGNATURES COMPLETED



STATIONARY ADVANCE WARNING SIGNS FOR INTERSTATE/FREEWAY RESURFACING PROJECTS

2/23/2017 S:\TMU\WZTC\DesignGroup3\Squad3B\0ats\Interstate Resurfacing Provisions and Details\Kpg\Resurfacing_AdvWarn_HSpd.dgn User:kedais