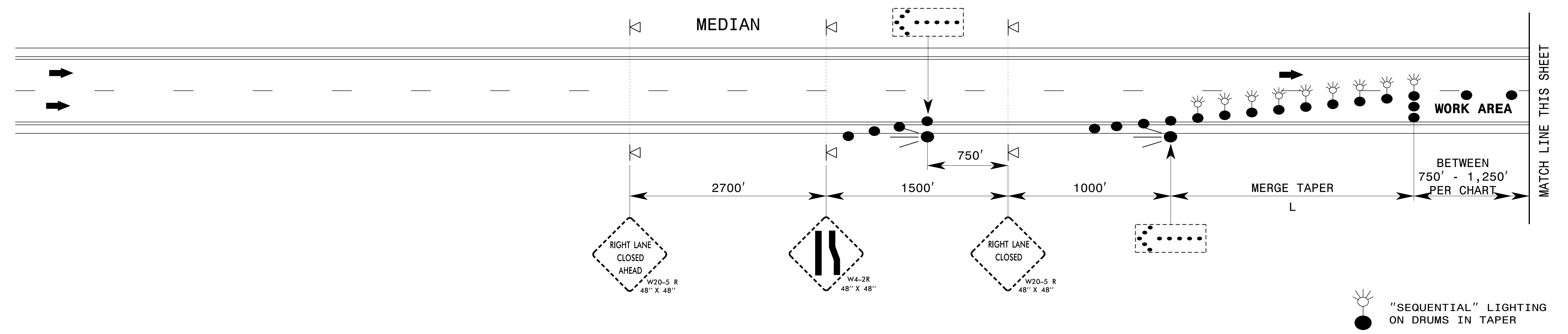
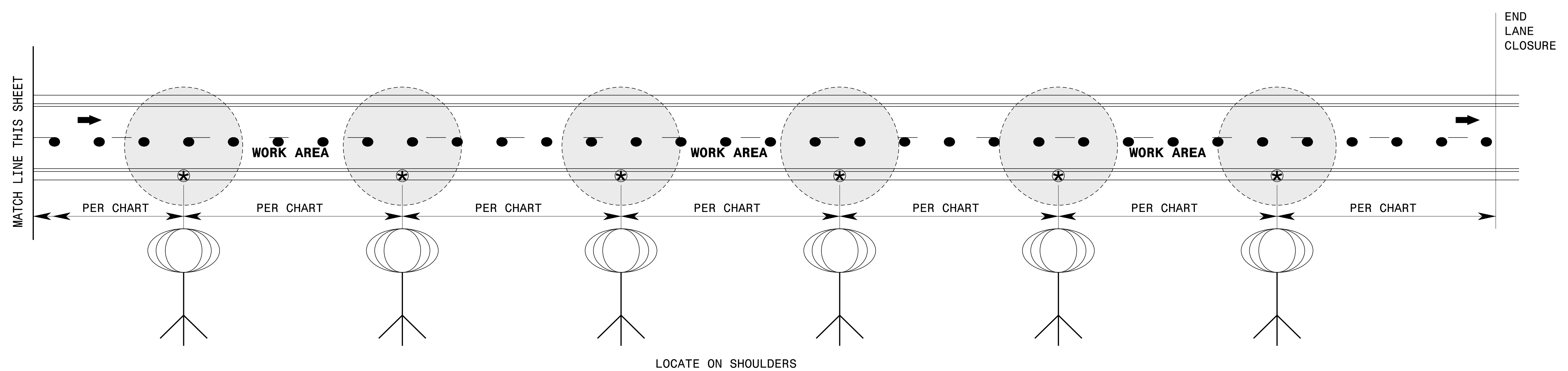


### ADVANCE WARNING AREA



### WORK ZONE AREA



### SPACING CHART

LIGHT OUTPUT (LUMENS)	MINIMUM LIGHTED FIXTURE AREA (SQUARE FEET)	MAXIMUM SPACING (FEET)	LIGHT UNITS (PER MILE)
50,000 TO 65,000	5.5	750'	6
66,000 TO 80,000	5.5	1,000'	5
81,000 TO 100,000	36	1,250'	4

### NOTES

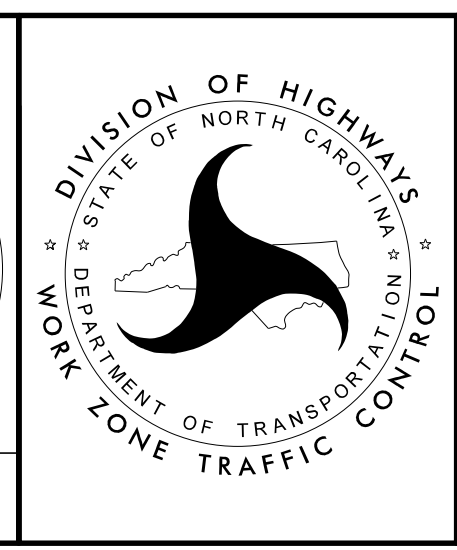
- 1) SPACE LIGHT UNITS ACCORDING TO THE CHART.
- 2) EACH LIGHT UNIT SHALL BE CAPABLE OF ELEVATING TO A MINIMUM HEIGHT OF 14' ABOVE THE PAVEMENT.
- 3) PLACE ON PAVED SHOULDER IF POSSIBLE.

APPROVED: *Steve Kite*  
DATE: 3/17/2017

DocuSigned by:  
E27CE30E1DFC442...

SEAL  
022104  
ENGINEER  
JOHN S. KITE, II

**DOCUMENT NOT CONSIDERED FINAL  
UNLESS ALL SIGNATURES COMPLETED**



**SEQUENTIAL FLASHING  
WARNING LIGHTS  
AND  
WORK ZONE  
PRESENCE LIGHTING**

3/17/2017 S:\TMU\WZTC\DesignGroup3\Squad3B\Data\Inter-state Resurfacing Provisions and Details\Detail Drawings\Sequential.and.Presence Lighting\_20170227.dgn User:kedais