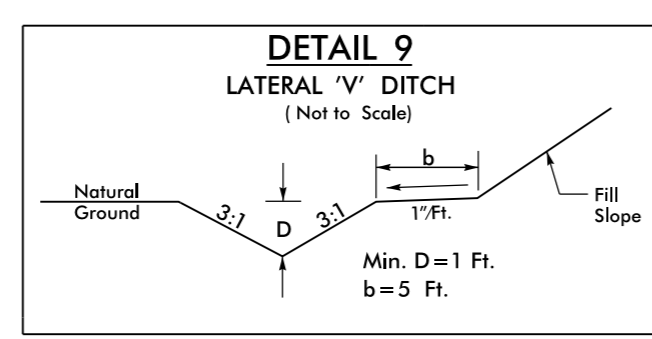
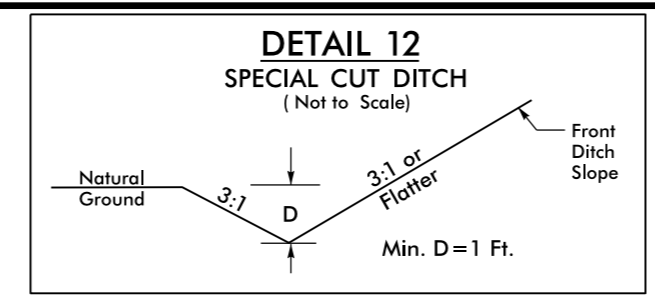


PROJECT REFERENCE NO. U-5796		SHEET NO. 09	
RW SHEET NO. 5/9/2017		HYDRAULICS ENGINEER 5/9/2017	
ROADWAY DESIGN ENGINEER 5/9/2017		SEAL 18537	
SEAL 18537		SEAL 18462	
JERRY P. PAGE		JAMES C. DAVIS	

**DOCUMENT NOT CONSIDERED FINAL
UNLESS ALL SIGNATURES COMPLETED**

NOTE:
SEE SHEET 12&13 FOR -Y8- PROFILE
SEE SHEET 13 FOR -Y10- PROFILE



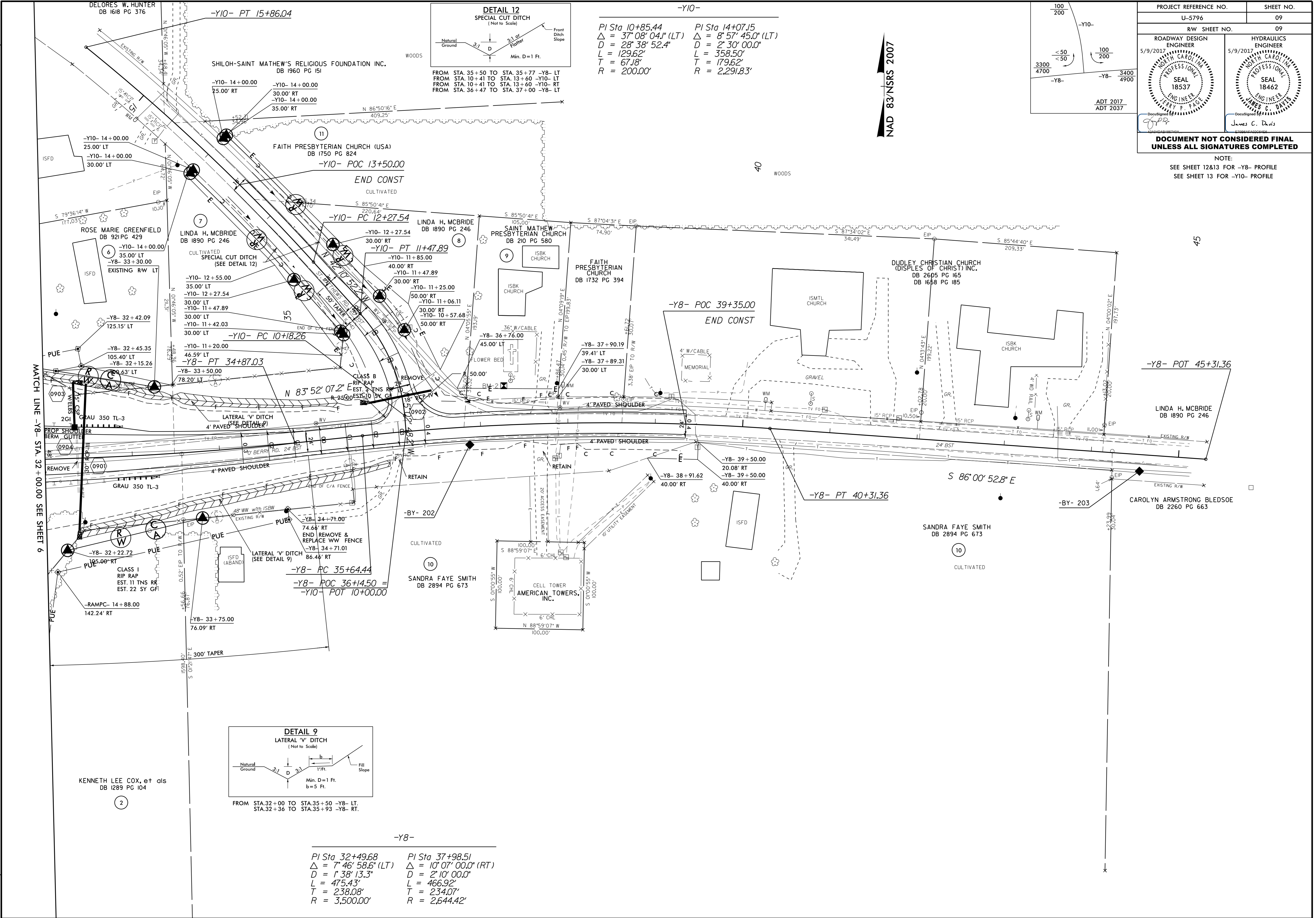
-Y10-

PI Sta 10+85.44	PI Sta 14+07.15
$\Delta = 37^\circ 08' 04.1''$ (LT)	$\Delta = 8^\circ 57' 45.0''$ (LT)
$D = 28^\circ 38' 52.4''$	$D = 2^\circ 30' 00.0''$
$L = 129.62'$	$L = 358.50'$
$T = 67.18'$	$T = 179.62'$
$R = 200.00'$	$R = 2,291.83'$

-Y8-

PI Sta 32+49.68	PI Sta 37+98.51
$\Delta = 7^\circ 46' 58.6''$ (LT)	$\Delta = 10^\circ 07' 00.0''$ (RT)
$D = 1^\circ 38' 13.3''$	$D = 2^\circ 10' 00.0''$
$L = 475.43'$	$L = 466.92'$
$T = 238.08'$	$T = 234.07'$
$R = 3,500.00'$	$R = 2,644.42'$

NAD 83/NSRS 2007



REVISIONS

09-MAY-2017 10:45
R:\PROJECTS\2017\05\5796\5796_ddec4_pn09.dgn
\$\$\$\$\$USERNAM\$\$\$\$\$