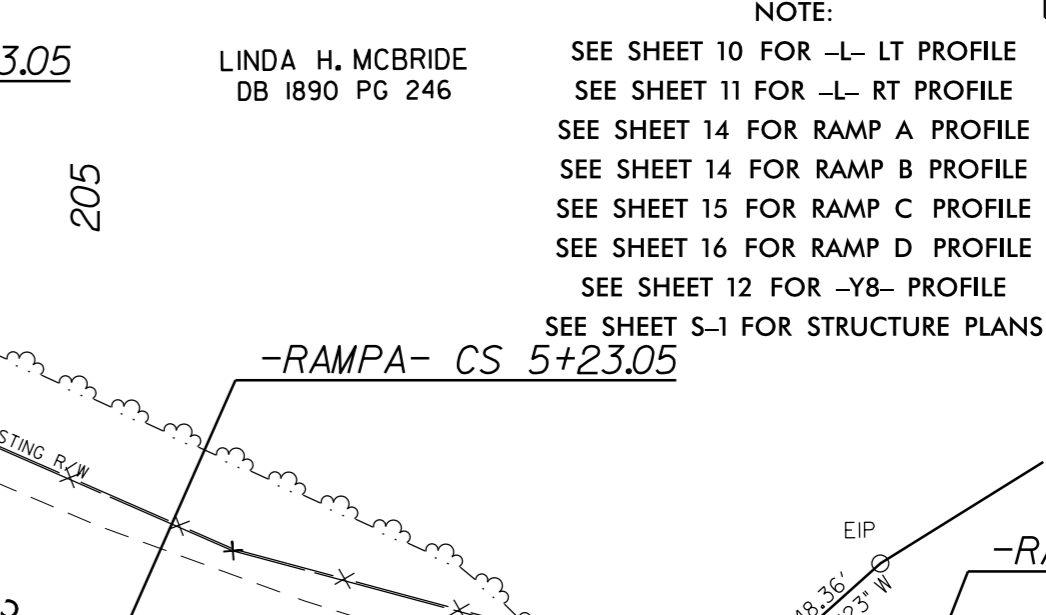
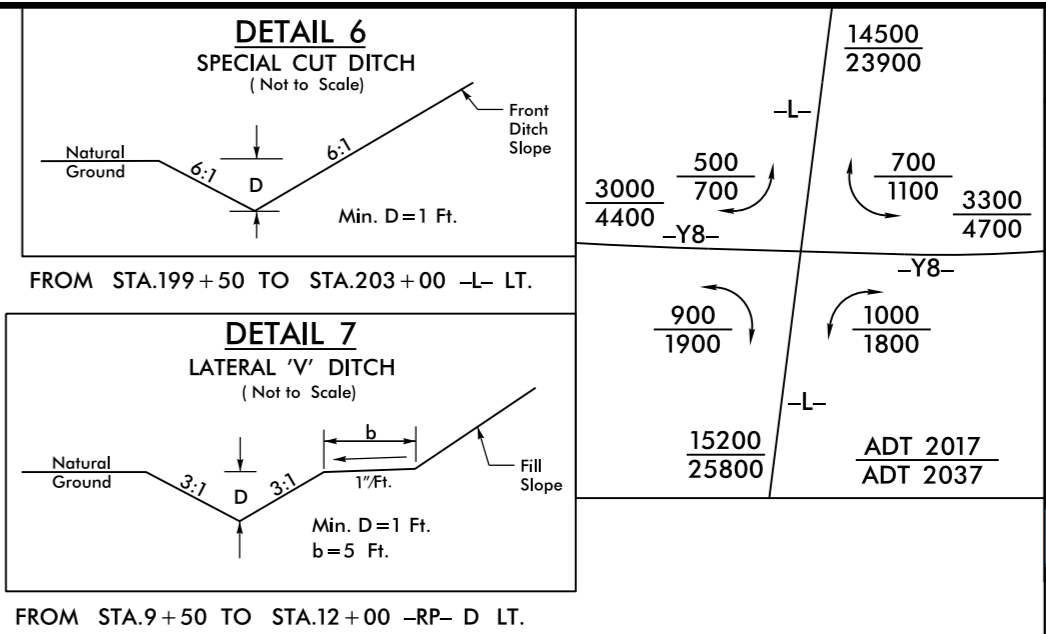
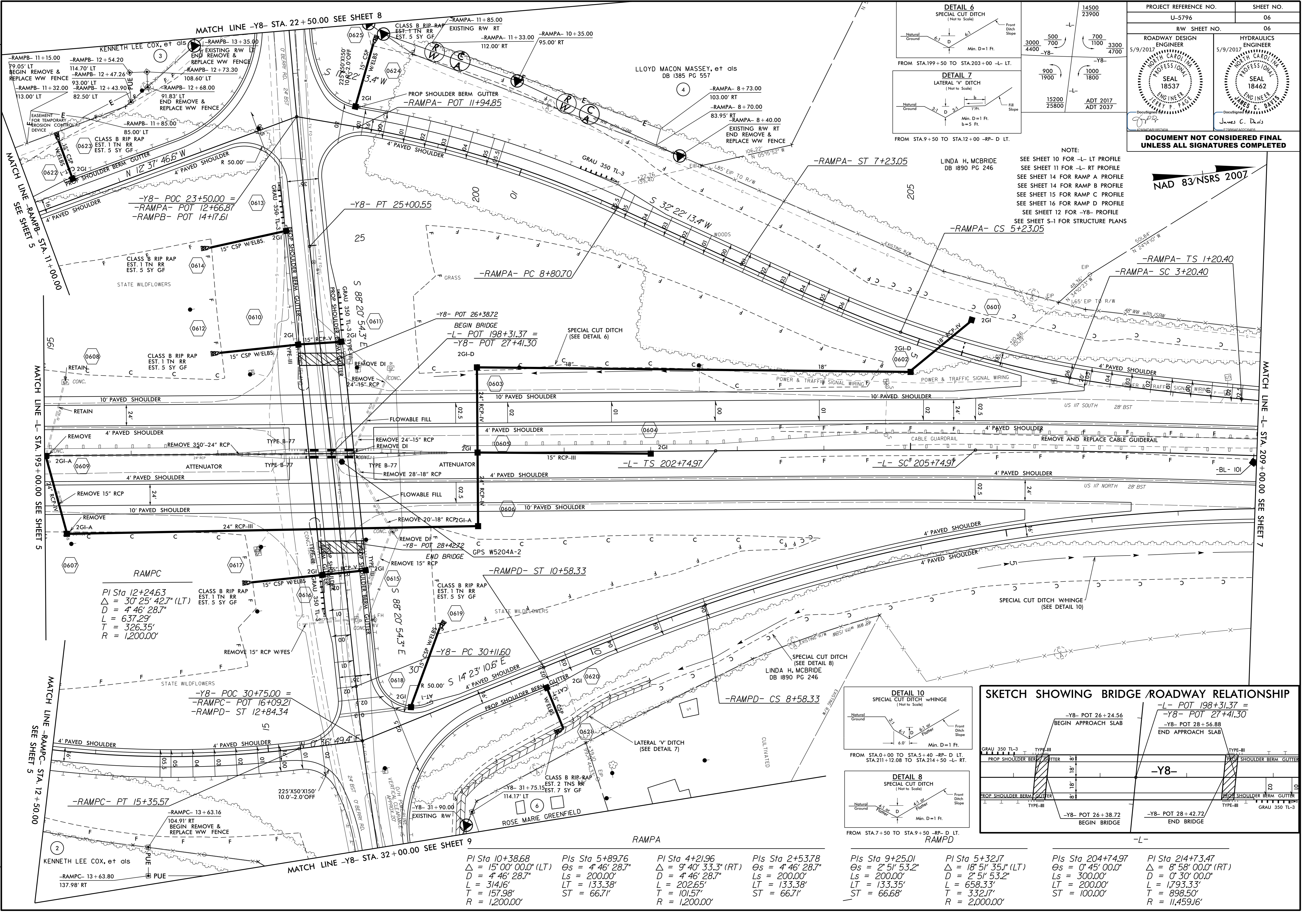


09-MAY-2017 10:42
R:\PROJECTS\2017\5796_ddc4_pn06.dgn
\$\$\$\$\$USER\$\$\$\$\$

REVISIONS



PROJECT REFERENCE NO.	U-5796	SHEET NO.	06
RAW SHEET NO.	06		
ROADWAY DESIGN ENGINEER	5/9/2017	HYDRAULICS ENGINEER	5/9/2017

DOCUMENT NOT CONSIDERED FINAL UNLESS ALL SIGNATURES COMPLETED

NAD 83/NSRS 2007

NOTE:
SEE SHEET 10 FOR -L- LT PROFILE
SEE SHEET 11 FOR -L- RT PROFILE
SEE SHEET 14 FOR RAMP A PROFILE
SEE SHEET 15 FOR RAMP C PROFILE
SEE SHEET 16 FOR RAMP D PROFILE
SEE SHEET 12 FOR -Y8- PROFILE
SEE SHEET S-1 FOR STRUCTURE PLANS

RAMP C
 PI Sta 12+24.63
 $\Delta = 30^{\circ} 25' 42.7''$ (LT)
 $D = 4' 46' 28.7''$
 $L = 637.29'$
 $T = 326.35'$
 $R = 1,200.00'$

-Y8- POC 30+75.00 =
 -RAMP C- POT 16+09.21
 -RAMP D- ST 12+84.34

-RAMP C- PT 15+35.57
 -RAMP C- 13+63.16
 104.91' RT
 BEGIN REMOVE & REPLACE WW FENCE

-RAMP C- 13+63.80
 137.98' RT

PI Sta 10+38.68
 $\Delta = 15^{\circ} 00' 00.0''$ (LT)
 $D = 4' 46' 28.7''$
 $L = 314.16'$
 $T = 157.98'$
 $R = 1,200.00'$

PIs Sta 5+89.76
 $\Delta = 4' 46' 28.7''$
 $Ls = 200.00'$
 $LT = 133.38'$
 $ST = 66.71'$

PI Sta 4+21.96
 $\Delta = 9^{\circ} 40' 33.3''$ (RT)
 $D = 4' 46' 28.7''$
 $Ls = 200.00'$
 $LT = 101.57'$
 $R = 1,200.00'$

PIs Sta 2+53.78
 $\Delta = 4' 46' 28.7''$
 $Ls = 200.00'$
 $LT = 133.38'$
 $ST = 66.71'$

PIs Sta 9+25.01
 $\Delta = 2^{\circ} 51' 53.2''$
 $Ls = 200.00'$
 $LT = 133.35'$
 $ST = 66.68'$

PI Sta 5+32.17
 $\Delta = 18^{\circ} 51' 35.1''$ (LT)
 $D = 2^{\circ} 51' 53.2''$
 $Ls = 200.00'$
 $LT = 658.33'$
 $T = 332.17'$
 $R = 2,000.00'$

PIs Sta 204+74.97
 $\Delta = 0^{\circ} 45' 00.0''$
 $Ls = 300.00'$
 $LT = 200.00'$
 $ST = 100.00'$

PI Sta 214+73.47
 $\Delta = 8^{\circ} 58' 00.0''$ (RT)
 $D = 0^{\circ} 30' 00.0''$
 $Ls = 1793.33'$
 $T = 898.50'$
 $R = 11,459.16'$

