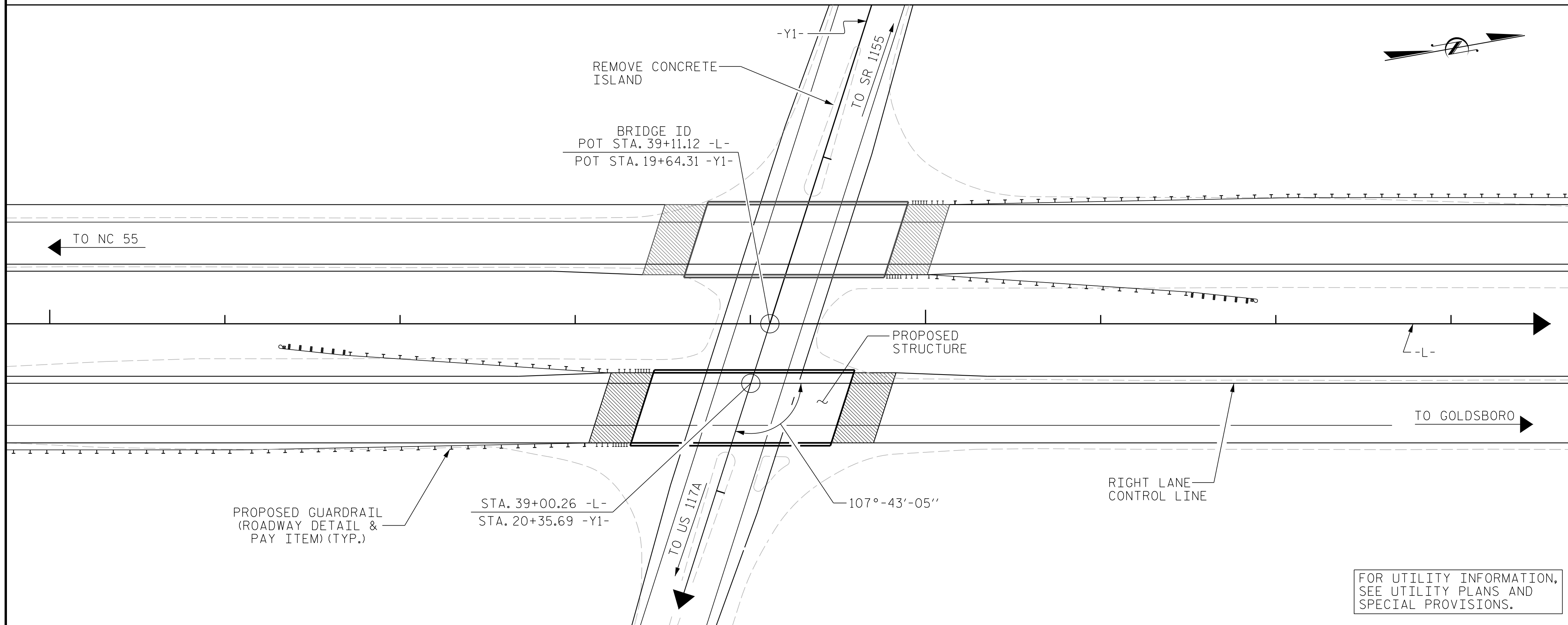


BM #2: 455' RT. OF STA. 38+69.00 -L-, ELEV. = 144.93



LOCATION SKETCH

GENERAL NOTES

- ASSUMED LIVE LOAD = HL-93 OR ALTERNATE LOADING.
- THIS BRIDGE HAS BEEN DESIGNED IN ACCORDANCE WITH THE REQUIREMENTS OF THE AASHTO LRFD BRIDGE DESIGN SPECIFICATIONS.
- THIS BRIDGE IS LOCATED IN SEISMIC ZONE 1.
- FOR OTHER DESIGN DATA AND GENERAL NOTES, SEE SHEET SN.
- FOR SUBMITTAL OF WORKING DRAWINGS, SEE SPECIAL PROVISIONS.
- FOR FALSEWORK AND FORMWORK, SEE SPECIAL PROVISIONS.
- FOR CRANE SAFETY, SEE SPECIAL PROVISIONS.
- FOR GROUT FOR STRUCTURES, SEE SPECIAL PROVISIONS.
- REMOVABLE FORMS MAY BE USED IN LIEU OF METAL STAY-IN-PLACE FORMS IN ACCORDANCE WITH ARTICLE 420-3 OF THE STANDARD SPECIFICATIONS.
- NEEDLE BEAMS WILL NOT BE ALLOWED UNLESS OTHERWISE CALLED FOR ON THE PLANS OR APPROVED BY THE ENGINEER.
- FOR PLACING LOAD ON STRUCTURE MEMBERS, SEE SPECIAL PROVISIONS.
- FOR MAINTENANCE AND PROTECTION OF TRAFFIC BENEATH PROPOSED STRUCTURE, SEE SPECIAL PROVISIONS.
- FOR EROSION CONTROL MEASURES, SEE EROSION CONTROL PLANS.

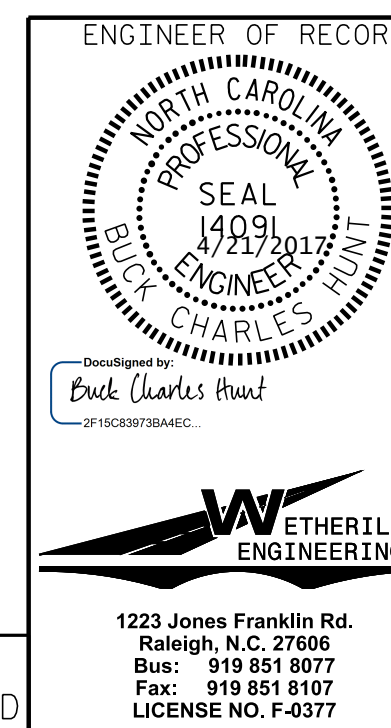
FOR UTILITY INFORMATION, SEE UTILITY PLANS AND SPECIAL PROVISIONS.

TOTAL BILL OF MATERIAL

	PDA TESTING	REINFORCED CONCRETE DECK SLAB	GROOVING BRIDGE FLOORS	CLASS A CONCRETE	BRIDGE APPROACH SLABS	REINFORCING STEEL	MODIFIED 63" PRESTRESSED CONCRETE GIRDERS		PILE DRIVING EQUIPMENT SETUP FOR HP 12 X 53 STEEL PILES		HP 12 x 53 STEEL PILES	PILE REDRIVES	4" SLOPE PROTECTION	CONCRETE BARRIER RAIL	ELASTOMERIC BEARINGS
	EACH	SQ. FT.	SQ. FT.	CU. YDS.	LUMP SUM	LBS.	No.	LIN. FT.	EACH	No.	LIN. FT.	EACH	SQ. YDS.	LIN. FT.	LUMP SUM
SUPERSTRUCTURE		4,869	5,964		LUMP SUM		5	557.76						225.17	LUMP SUM
END BENT No. 1				45.7		5360			9	9	900	9	370		
END BENT No. 2				45.7		5359			9	9	900	9	335		
TOTAL	1	4,869	5,964	91.4	LUMP SUM	10,719	5	557.76	18	18	1800	18	705	225.17	LUMP SUM

PROJECT NO. R-5719
WAYNE COUNTY
 STATION: 39+11.12 -L-

SHEET 3 OF 3



STATE OF NORTH CAROLINA
 DEPARTMENT OF TRANSPORTATION
 RALEIGH

GENERAL DRAWING
 RIGHT LANE BRIDGE
 ON US 117 OVER
 SR 1135 BETWEEN
 NC 55 & OBERRY RD.

REVISIONS						SHEET NO.
NO.	BY:	DATE:	NO.	BY:	DATE:	TOTAL SHEETS
1			3			26
2			4			

DRAWN BY : GMG/DAH DATE : 5/16
 CHECKED BY : BCH DATE : 5/16

DOCUMENT NOT CONSIDERED FINAL
 UNLESS ALL SIGNATURES COMPLETED

1223 Jones Franklin Rd.
 Raleigh, N.C. 27606
 Bus: 919 851 8077
 Fax: 919 851 8107
 LICENSE NO. F-0377

P:\2015\A-5719\Structures\DWG\Right Lane\A-5719_RT_GD_WE I.dgn
 4/21/2017 6:50:14 AM