

FOUNDATION LAYOUT

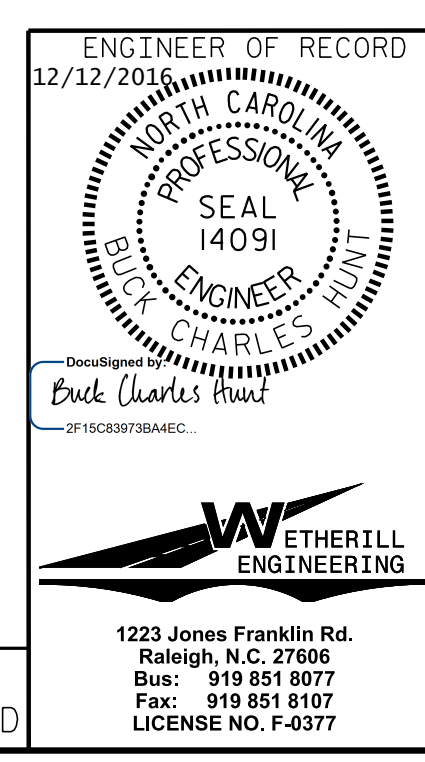
DIMENSIONS LOCATING PILES ARE SHOWN TO THE CENTERLINE OF PILES

NOTES:

- SEE ROADWAY PLANS AND SPECIAL PROVISIONS FOR THE SETTLEMENT GAUGES REQUIRED AT END BENTS 1 AND 2.
- OBSERVE A 2 MONTH WAITING PERIOD AFTER CONSTRUCTING THE EMBANKMENT TO WITHIN 2 FEET OF FINISHED GRADE BEFORE BEGINNING END BENT CONSTRUCTION AT END BENTS 1 AND 2. FOR BRIDGE WAITING PERIODS, SEE ROADWAY PLANS AND SPECIAL PROVISIONS.
- FOR PILES, SEE GEOTECHNICAL SPECIAL PROVISIONS AND SECTION 450 OF THE STANDARD SPECIFICATIONS.
- PILES AT END BENTS 1 AND 2 ARE DESIGNED FOR A FACTORED RESISTANCE OF 115 TONS PER PILE.
- DRIVE PILES AT END BENTS 1 AND 2 TO A REQUIRED DRIVING RESISTANCE OF 195 TONS PER PILE.
- TESTING PILES WITH THE PDA DURING DRIVING, RESTRIKING, OR REDRIVING MAY BE REQUIRED. THE ENGINEER WILL DETERMINE THE NEED FOR PDA TESTING. FOR PDA TESTING, SEE SECTION 450 OF THE STANDARD SPECIFICATIONS.

PROJECT NO. R-5719
WAYNE COUNTY
 STATION: 39+11.12 -L-

SHEET 2 OF 3



STATE OF NORTH CAROLINA
 DEPARTMENT OF TRANSPORTATION
 RALEIGH
GENERAL DRAWING
 RIGHT LANE BRIDGE
 ON US 117 OVER
 SR 1135 BETWEEN
 NC 55 & OBERRY RD.

| REVISIONS | | | | | | SHEET NO. |
|-----------|-----|-------|-----|-----|-------|--------------|
| NO. | BY: | DATE: | NO. | BY: | DATE: | S02-2 |
| 1 | | | 3 | | | TOTAL SHEETS |
| 2 | | | 4 | | | 26 |

DOCUMENT NOT CONSIDERED FINAL
 UNLESS ALL SIGNATURES COMPLETED

DRAWN BY : J. PENDERGRAFT DATE : 1-16
 CHECKED BY : J. DILWORTH DATE : 1-16

P:\2015\A-5719\Structures\DWG\Right Lane\A-5719_RT_FND_WE I.dgn
 12/16/2016 1:33:02 PM